

# Prague Airport Authority Ground Handling

Your handling agent at PRG



# Introduction

Prague Airport Authority  
Ground Handling Services  
Department:

- provides full passenger and technical handling
- for aircraft from general aviation up to B747 category
- 24 hours daily, 365 days in the year



# Our customers

## Scheduled:

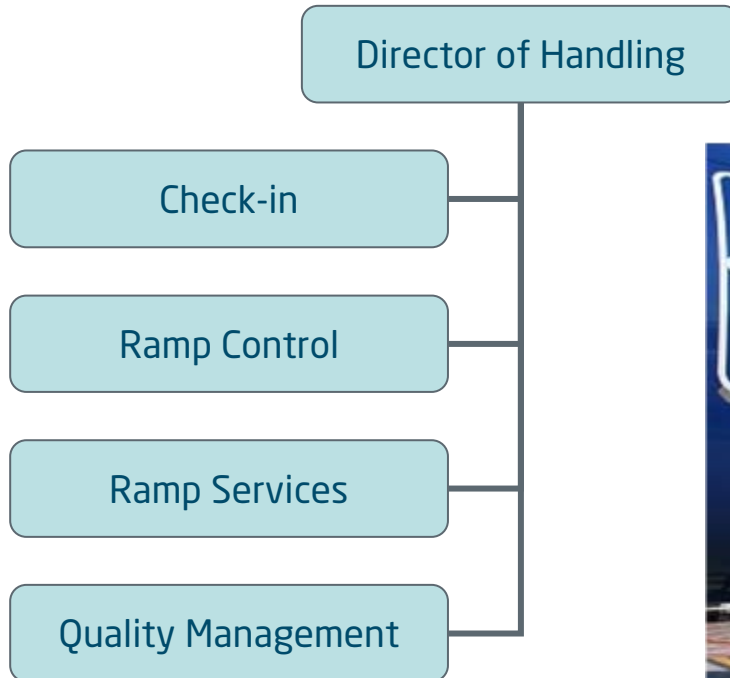
- Air Europa
  - Air Moldova
  - Belavia
  - Clickair
  - KD Avia
  - Polet
  - Rossiya (Pulkovo)
  - Ryanair
  - Sky Europe
  - Smart Wings
  - TAP Air Portugal
  - Tunisair
  - Ural Airlines
- and others.



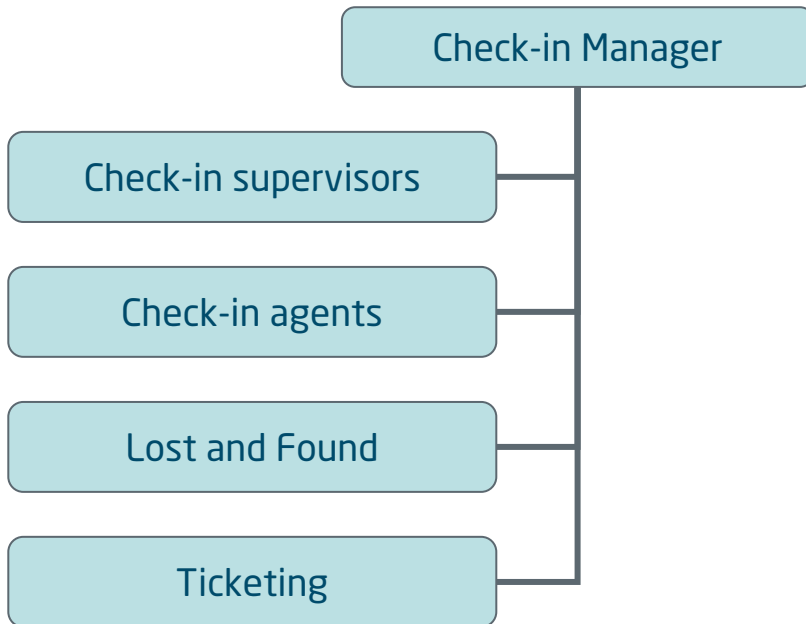
## Non-scheduled:

- Travel Service
- Nouvelair
- Karthago Airlines
- Iberworld
- Israil
- Bulgarian Air Charter
- Sun Express
- Privilege Style
- Hola Airlines
- Europe Airpost and others.

# Structure

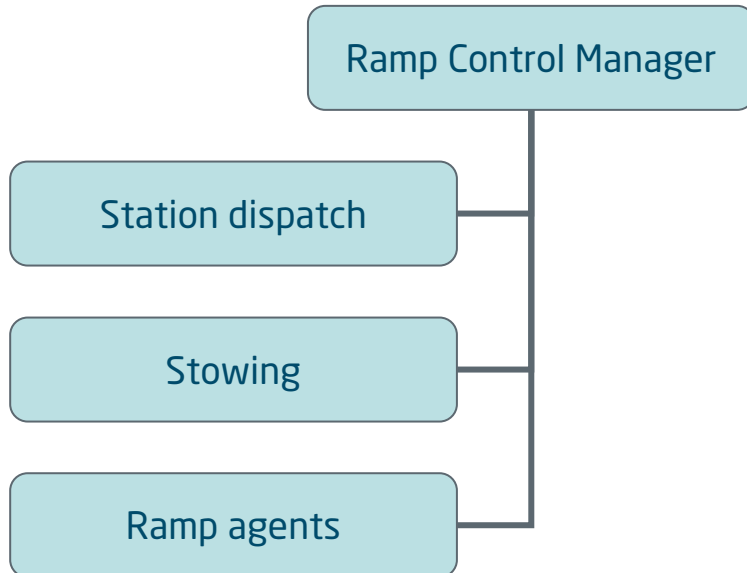


# Check-in



Remark: We use SITA DCS check-in system, but we are able to host another systems too. Worldtracer is used on Lost and Found unit.

# Ramp Control



Remark: You can ask our dispatch for all services, including hotels booking, transport to hotels or alternate airport, catering etc.



# Ramp Services

Ramp Services Manager

Baggage sorting  
and loading

Technical equipment staff



Picture: One Boeing 737-800 of Travel Service is operated in Prague Airport advertising livery.

## Business lounges

Your passengers are welcomed at business lounges at Terminal 1 and Terminal 2.



## General Aviation

We handle 80% of private flights at PRG. Flights are operated from Terminal 3.



# Technical equipment

Towbarless vehicles	2
Tow/pushback tractors	4
Tow tractors for trailers	20
Highloaders	4
Belt loaders	8
Stairs	16
Toilet service cars	3
Baggage Trailers	60
Container trailers	26
GPU	8
Heating unit	1
Jet starter	1
Microbuses	3
Potable water car	2
De-icing cars	2



# Contacts

- Director of Handling Department:  
Mr. Jaroslav Štěpánek,  
tel: +420 220 11 84 68, e-mail: [jaroslav.stepanek@prg.aero](mailto:jaroslav.stepanek@prg.aero)
- Ground Handling Agreements, handling orders:  
Mr. Aleš Kuba  
tel: +420 220 11 63 93, e-mail: [ales.kuba@prg.aero](mailto:ales.kuba@prg.aero), SITA: PRGKIXH
- H24 Station dispatch, handling orders:  
tel: +420 220 11 39 86, +420 220 11 60 77  
e-mail: [handling.ops@prg.aero](mailto:handling.ops@prg.aero), SITA: PRGKOXH

Thank you for your attention.  
We are looking forward to our cooperation.

