

Equivalent Continuous Sound Pressure Level

MP01 Jeneč

July 2019

	Total Sound [dB]		Aircraft Sound [dB]		Ambient Sound [dB]	
	L _{Aeq,T} DAY	L _{Aeq,T} NIGHT	L _{Aeq,T} DAY	L _{Aeq,T} NIGHT	L _{Aeq,T} DAY	L _{Aeq,T} NIGHT
01/07/2019	60.2	55.8	58.6	55.3	55.1	46.4
02/07/2019	60.8	55.3	59.7	54.4	53.9	48.2
03/07/2019	57.4	53.9	56.3	52.4	51.0	48.3
04/07/2019	58.8	50.6	58.0	45.6	50.9	49.0
05/07/2019	61.0	53.3	60.0	52.3	53.8	46.7
06/07/2019	60.4	54.7	58.9**	54.2	55.2	45.0
07/07/2019	60.5	55.6	60.1	55.3	49.8	43.9
08/07/2019	58.8	57.1	57.9**	56.7	51.9	47.0
09/07/2019	61.0	55.7	60.7	55.3	49.0	45.0
10/07/2019	60.6	56.0	60.2	55.6	49.8	44.4
11/07/2019	61.8	56.1	60.2	55.7	56.7	44.8
12/07/2019	61.9	57.0	61.3	56.8	53.1	44.0
13/07/2019	59.8	56.3	59.1	56.1	51.3	42.6
14/07/2019	58.6	54.9	57.8	54.5	50.8	44.1
15/07/2019	60.9	52.7	60.6	51.4	48.9	46.8
16/07/2019	61.0	56.9	60.6	54.5	50.8	53.2
17/07/2019	60.5	54.5	60.1	53.9	49.5	45.6
18/07/2019	57.9	53.6	56.8	52.5	51.1	47.0
19/07/2019	61.0	55.2	60.6	54.8	50.3	45.0
20/07/2019	60.0	55.3	59.6	55.1	49.8	42.5
21/07/2019	61.0	56.3	60.3	56.0	52.9	44.0
22/07/2019	60.2	56.3	59.8	55.9	49.6	46.3
23/07/2019	52.8	53.1	49.5	52.3	50.1	45.6
24/07/2019	52.3	54.0	49.2	53.4	49.4	44.9
25/07/2019	57.7	52.2	56.6	51.4	51.1	44.7
26/07/2019	54.0	50.9	51.9	47.9	49.8	47.9
27/07/2019	51.9	47.5	48.5	44.9	49.3	44.1
28/07/2019	52.1	47.4	49.6	44.9	48.6	43.8
29/07/2019	58.4	53.2	57.4	52.4	51.2	45.5
30/07/2019	60.4	55.4	59.9	55.2	50.7	42.6
31/07/2019	59.6	55.2	59.0	54.9	50.8	43.4
Sum	59.5	54.8	58.8	54.1	51.7	46.3

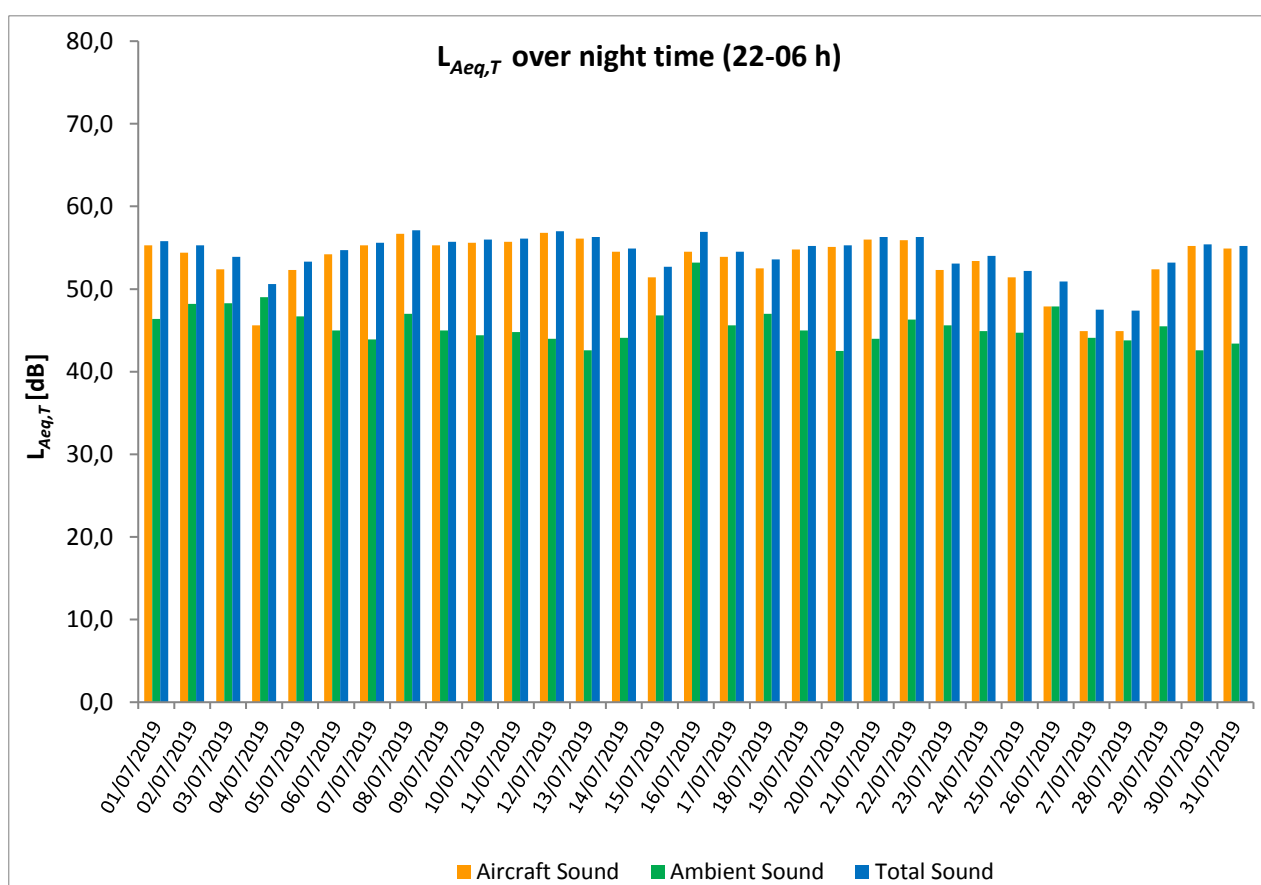
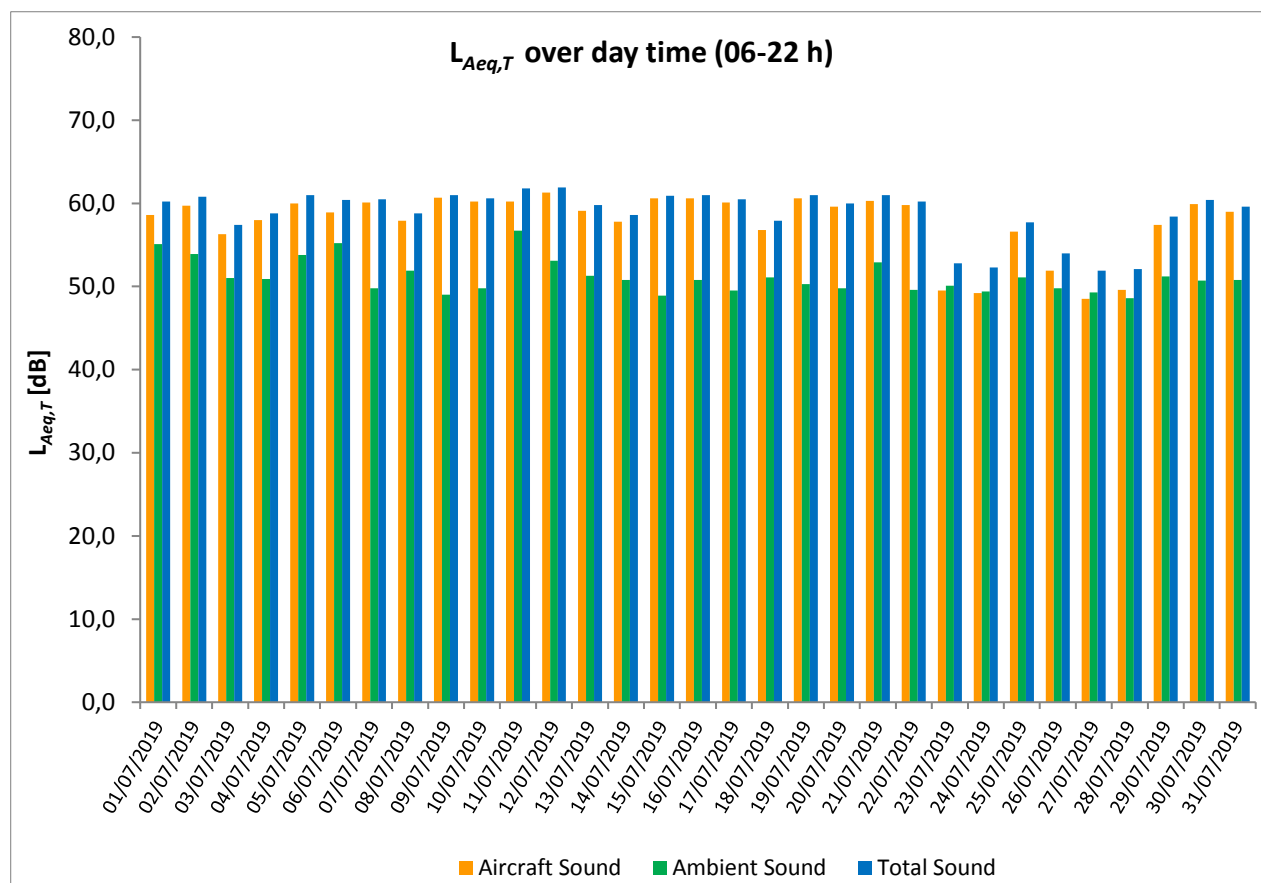
* Availability < 50%

** One or more events measured at wind speed above 5 m/s, not included into calculation

Equivalent Continuous Sound Pressure Level

MP01 Jeneč

July 2019



Equivalent Continuous Sound Pressure Level

MP02 Červený Újezd

July 2019

	Total Sound [dB]		Aircraft Sound [dB]		Ambient Sound [dB]	
	L _{Aeq,T} DAY	L _{Aeq,T} NIGHT	L _{Aeq,T} DAY	L _{Aeq,T} NIGHT	L _{Aeq,T} DAY	L _{Aeq,T} NIGHT
01/07/2019	54.9	50.4	53.6	49.8	49.1	41.5
02/07/2019	55.5	50.3	54.4	49.2	48.7	43.8
03/07/2019	53.0	49.0	51.5	47.9	47.8	42.3
04/07/2019	54.5	44.1	53.3	41.7	48.2	40.5
05/07/2019	55.8	48.3	55.0	47.6	48.2	40.0
06/07/2019	55.0	49.7	53.9**	49.1	48.3	41.1
07/07/2019	55.4	50.5	54.2	50.3	49.1	37.9
08/07/2019	54.3	52.2	53.0	51.6	48.5	43.4
09/07/2019	56.0	50.9	55.1	50.3	48.7	42.4
10/07/2019	55.8	51.1	55.0	50.6	48.1	41.6
11/07/2019	56.1	51.4	55.1	50.9	49.0	42.0
12/07/2019	56.9	51.3	55.6	51.0	51.0	40.2
13/07/2019	55.0	50.5	53.8	50.1	48.9	40.4
14/07/2019	54.9	49.8	52.2	49.4	51.6	38.1
15/07/2019	56.5	48.3	55.6	47.6	49.3	39.9
16/07/2019	56.3	50.8	55.2	50.1	50.0	42.4
17/07/2019	56.1	49.7	54.7	48.6	50.6	43.4
18/07/2019	60.1	49.8	52.7	49.0	59.2	42.0
19/07/2019	56.1	50.5	55.1	49.9	49.1	41.5
20/07/2019	55.0	50.5	53.9	50.2	48.6	39.3
21/07/2019	56.9	51.6	55.3	51.2	51.7	41.6
22/07/2019	55.9	51.6	54.7	50.9	49.8	43.3
23/07/2019	57.4	50.5	48.6	47.9	56.8	47.1
24/07/2019	53.0	50.2	44.7	49.6	52.3	41.4
25/07/2019	53.4	48.7	51.9	46.8	47.9	44.3
26/07/2019	51.6	46.5	48.5	44.8	48.7	41.5
27/07/2019	49.7	45.3	46.6	42.2	46.8	42.4
28/07/2019	49.4	43.5	46.6	41.9	46.1	38.5
29/07/2019	54.5	48.5	52.4	46.9	50.3	43.2
30/07/2019	56.0	50.7	54.6	50.1	50.4	41.8
31/07/2019	54.7	50.7	53.5	50.1	48.4	41.4
Sum	55.5	50.0	53.6	49.2	50.9	42.0

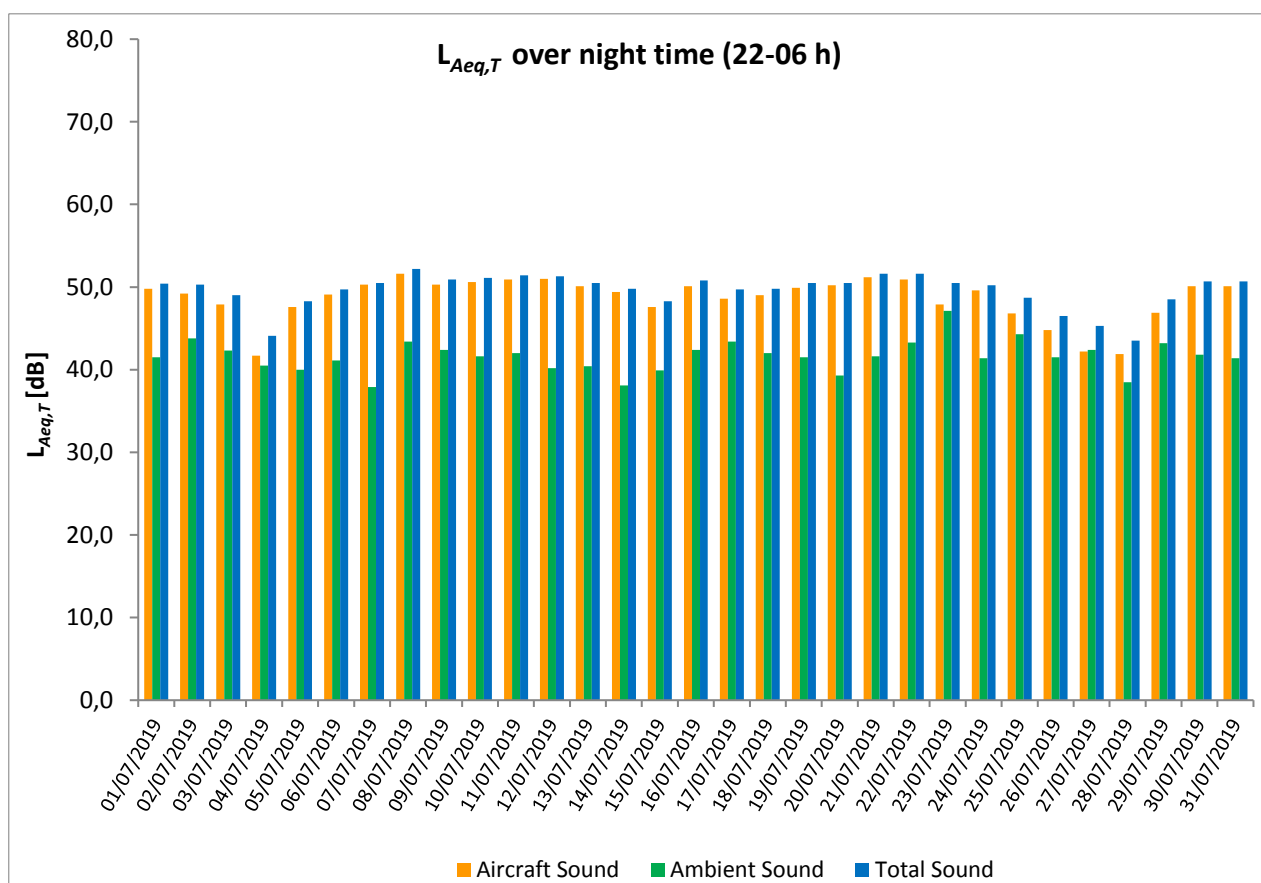
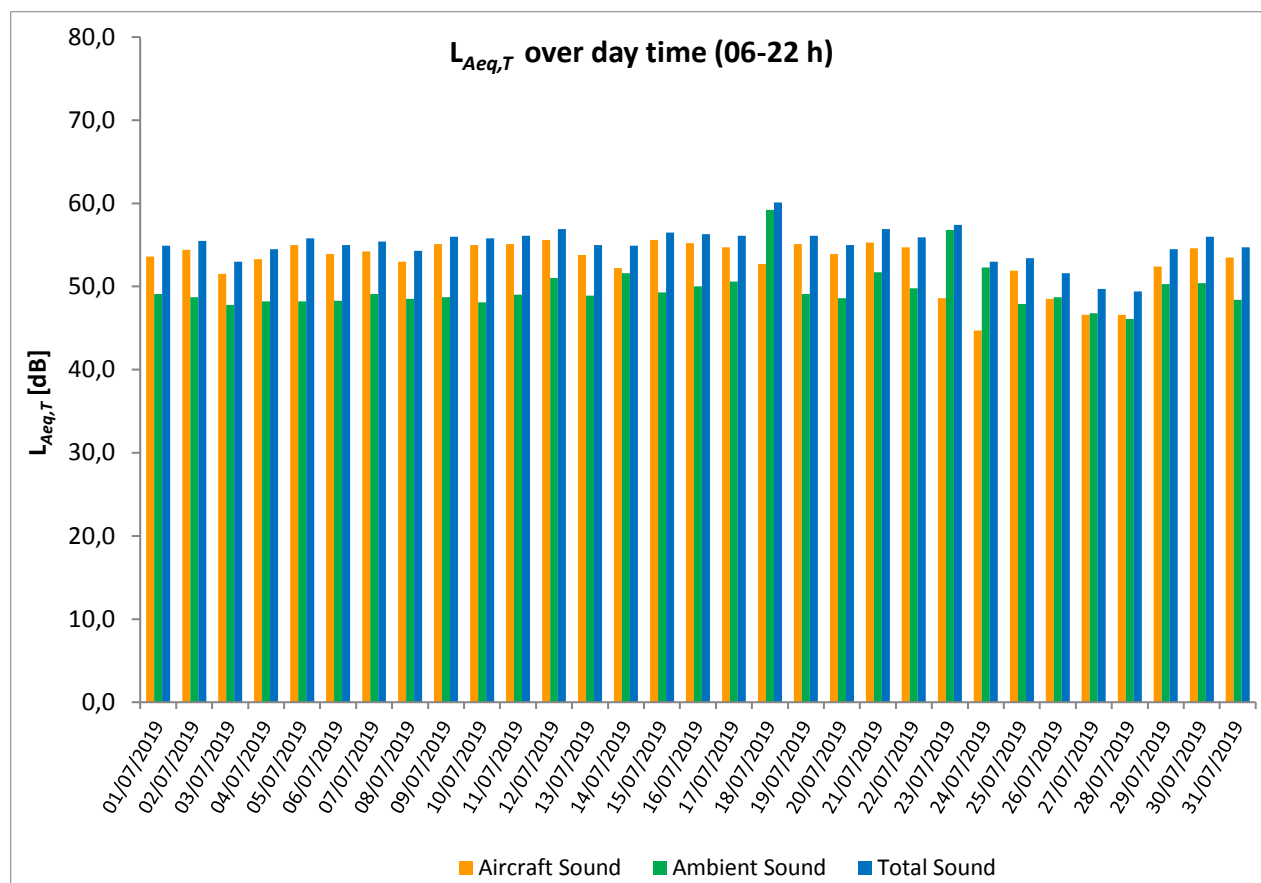
* Availability < 50%

** One or more events measured at wind speed above 5 m/s, not included into calculation

Equivalent Continuous Sound Pressure Level

MP02 Červený Újezd

July 2019



Equivalent Continuous Sound Pressure Level

MP03 Unhošť

July 2019

	Total Sound [dB]		Aircraft Sound [dB]		Ambient Sound [dB]	
	L _{Aeq,T} DAY	L _{Aeq,T} NIGHT	L _{Aeq,T} DAY	L _{Aeq,T} NIGHT	L _{Aeq,T} DAY	L _{Aeq,T} NIGHT
01/07/2019	55.7	51.3	53.3	50.4	52.0	44.3
02/07/2019	56.4	51.1	55.2	50.6	50.3	41.5
03/07/2019	55.9	49.9	52.5	49.1	53.2	41.8
04/07/2019	56.0	46.3	54.1	44.1	51.6	42.4
05/07/2019	56.6	49.3	55.3	48.6	50.8	41.1
06/07/2019	55.1	50.3	53.9**	49.6	49.0	42.1
07/07/2019	55.4	51.3	54.7	50.9	47.2	41.5
08/07/2019	56.1	52.9	53.4**	51.9	52.7	46.0
09/07/2019	56.4	51.8	55.7	51.1	48.2	43.8
10/07/2019	56.3	51.7	55.4	51.1	49.2	42.3
11/07/2019	59.2	52.1	55.4	51.7	56.8	41.6
12/07/2019	57.1	52.7	55.6	51.3	51.7	47.2
13/07/2019	54.8	51.5	53.5	51.2	48.7	38.9
14/07/2019	56.2	51.0	54.0	50.8	52.2	39.0
15/07/2019	56.6	49.7	55.9	49.3	48.2	39.9
16/07/2019	56.7	50.5	54.8	50.1	52.2	40.3
17/07/2019	56.0	50.3	55.3	49.9	47.9	39.7
18/07/2019	55.4	53.1	53.4	50.1	51.0	50.1
19/07/2019	56.3	50.6	55.3	50.2	49.4	39.0
20/07/2019	55.5	51.2	55.0	50.6	46.4	42.2
21/07/2019	57.0	51.5	54.9	51.2	52.9	39.6
22/07/2019	55.8	51.9	55.2	51.6	46.8	40.5
23/07/2019	50.3	52.5	47.1	48.8	47.6	50.1
24/07/2019	50.3	50.6	46.9	50.2	47.7	40.2
25/07/2019	53.4	48.3	52.8	47.5	44.6	40.8
26/07/2019	51.9	47.7	50.6	46.8	46.1	40.4
27/07/2019	52.0	47.2	48.8	45.2	49.2	42.9
28/07/2019	51.5	46.8	49.4	45.4	47.3	41.1
29/07/2019	53.8	49.1	53.0	48.4	45.7	41.0
30/07/2019	56.2	50.9	54.2	50.4	51.9	41.6
31/07/2019	54.8	50.6	54.1	50.2	46.9	39.6
Sum	55.6	50.8	54.0	50.0	50.4	43.3

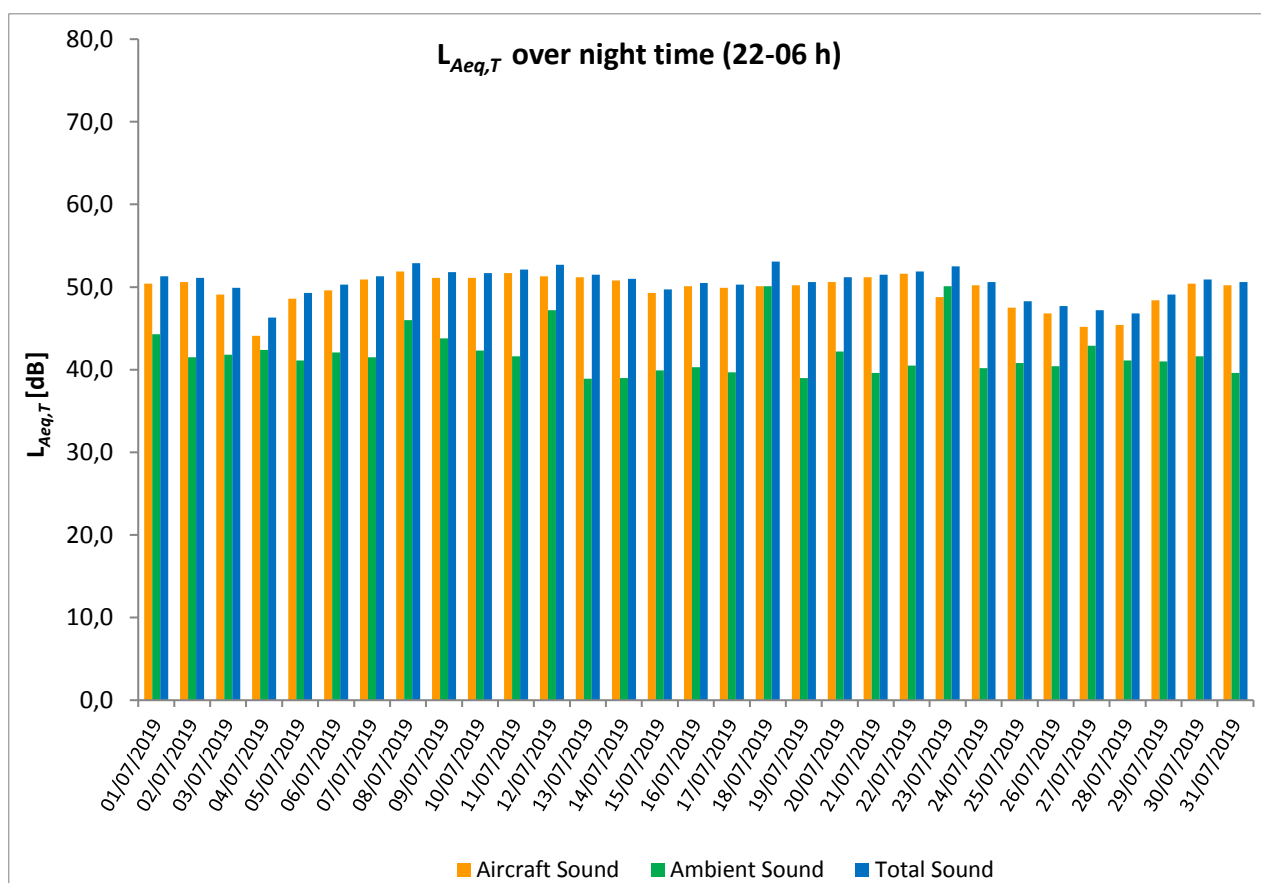
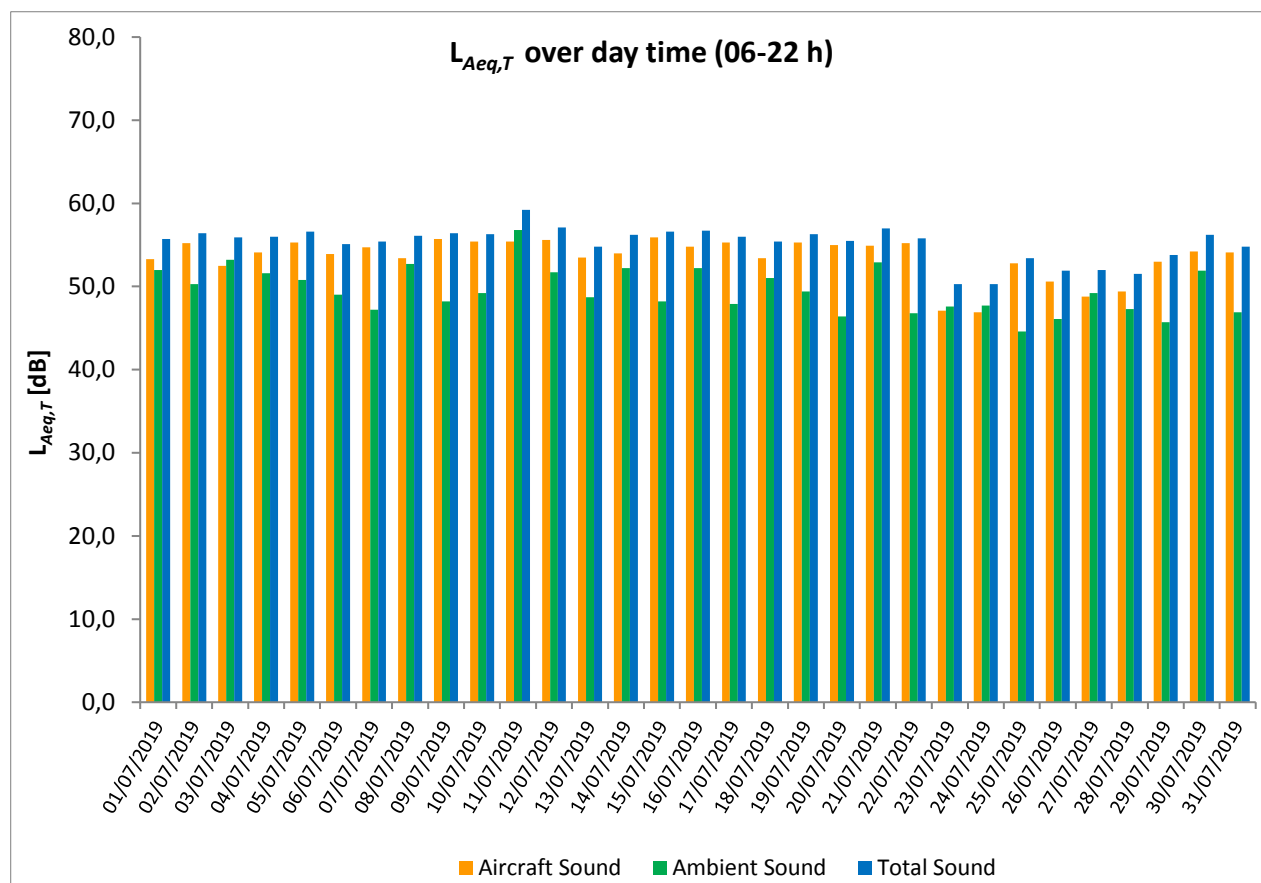
* Availability < 50%

** One or more events measured at wind speed above 5 m/s, not included into calculation

Equivalent Continuous Sound Pressure Level

MP03 Unhošť

July 2019



Equivalent Continuous Sound Pressure Level

MP04 Pavlov

July 2019

	Total Sound [dB]		Aircraft Sound [dB]		Ambient Sound [dB]	
	L _{Aeq,T} DAY	L _{Aeq,T} NIGHT	L _{Aeq,T} DAY	L _{Aeq,T} NIGHT	L _{Aeq,T} DAY	L _{Aeq,T} NIGHT
01/07/2019	57.1	52.7	54.5	50.6	53.6	48.5
02/07/2019	57.9	52.6	55.9	50.7	53.6	48.3
03/07/2019	55.8	52.0	52.1	48.9	53.4	49.1
04/07/2019	56.9	50.5	55.1	42.1	52.2	49.8
05/07/2019	57.8	51.0	56.4	48.7	52.4	47.0
06/07/2019	56.7	52.8	55.6	49.9	50.1	49.8
07/07/2019	57.6	52.7	55.5	51.2	53.4	47.3
08/07/2019	55.9	53.4	54.0	52.7	51.4	45.1
09/07/2019	57.9	52.6	56.4	51.2	52.3	47.0
10/07/2019	58.0	52.5	56.1	51.7	53.3	44.5
11/07/2019	57.5	53.0	56.5	51.4	50.9	47.8
12/07/2019	58.6	52.3	56.8	51.9	53.9	42.3
13/07/2019	55.8	51.7	54.3	51.2	50.5	41.9
14/07/2019	56.7	50.7	53.1	49.6	54.2	44.2
15/07/2019	59.1	49.5	56.3	47.3	55.8	45.4
16/07/2019	58.2	51.5	56.8	50.6	52.4	44.5
17/07/2019	57.5	51.2	55.8	49.5	52.6	46.1
18/07/2019	56.2	51.8	53.2	50.0	53.1	47.2
19/07/2019	57.6	52.2	56.5	50.6	51.1	47.1
20/07/2019	56.7	52.2	55.8	50.4	49.7	47.4
21/07/2019	57.5	53.3	55.7	51.5	52.9	48.4
22/07/2019	56.7	52.8	55.6	51.4	50.0	47.5
23/07/2019	51.9	51.1	46.1	48.3	50.5	47.9
24/07/2019	52.3	51.8	46.1	50.1	51.0	46.9
25/07/2019	55.6	48.9	52.3	46.6	53.0	45.1
26/07/2019	52.6	49.1	49.0	45.4	50.2	46.7
27/07/2019	52.2	48.9	45.0	42.3	51.2	47.9
28/07/2019	52.5	45.4	46.3	41.4	51.3	43.2
29/07/2019	54.6	49.6	52.9	47.9	49.7	44.8
30/07/2019	57.2	51.8	55.4	51.3	52.5	42.2
31/07/2019	55.8	51.1	54.3	50.5	50.6	42.7
Sum	56.6	51.6	54.7	49.9	52.3	46.8

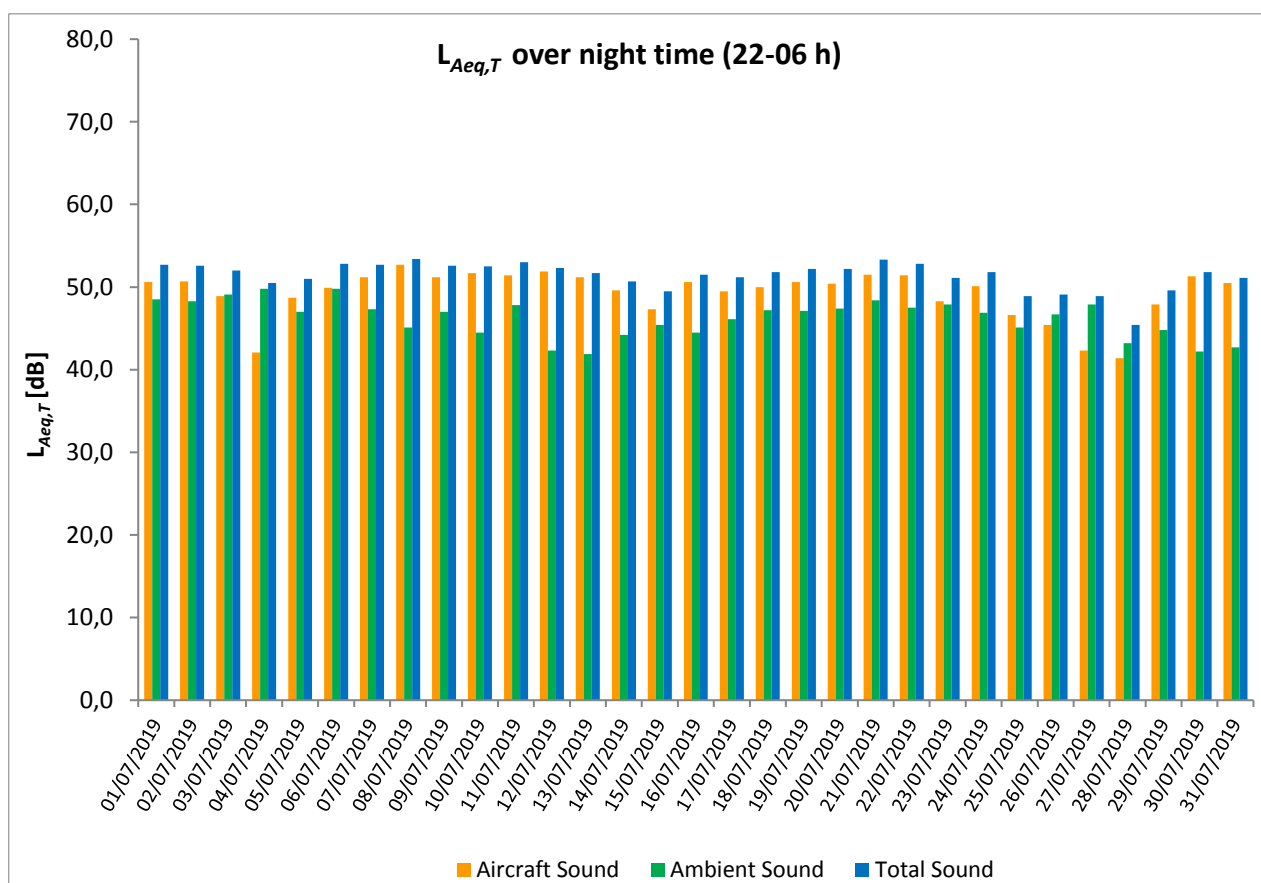
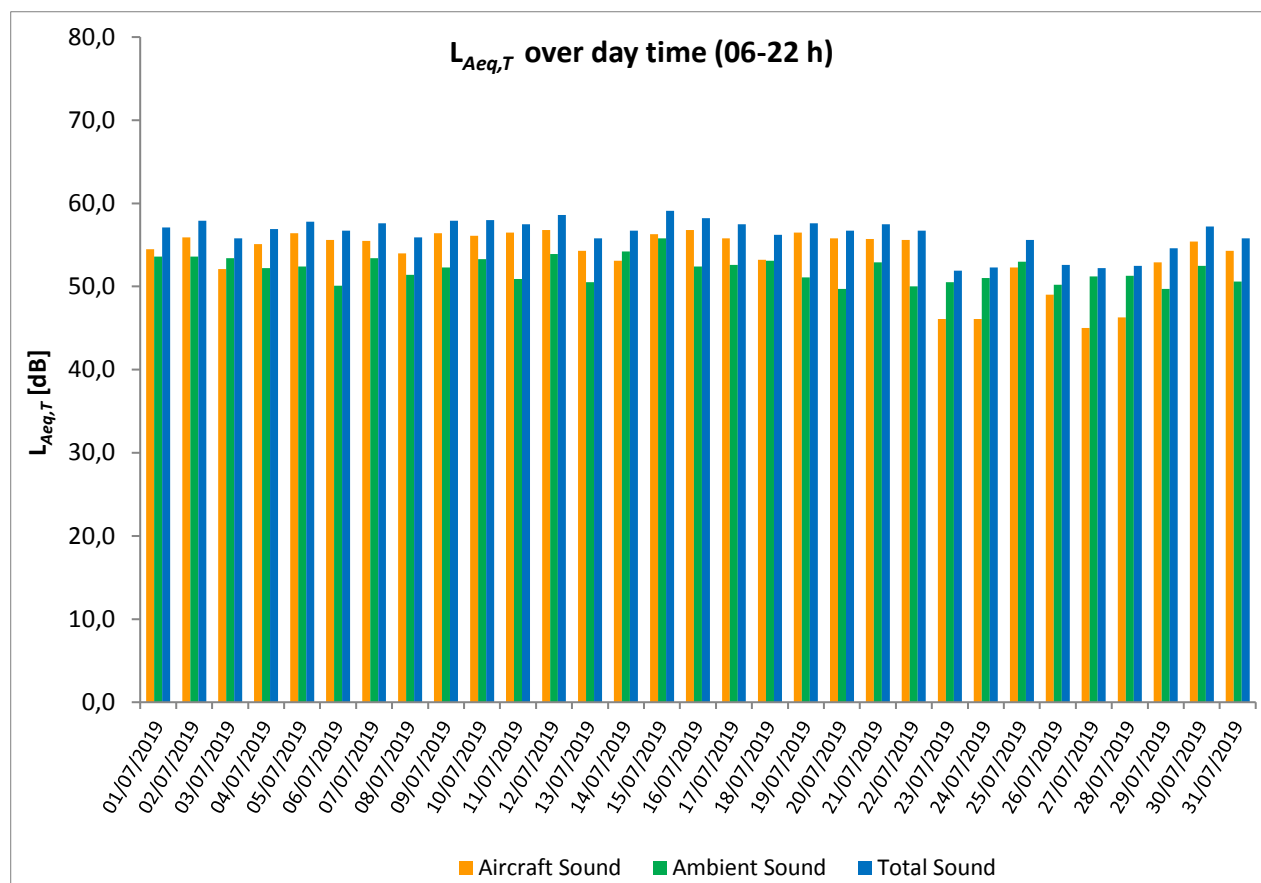
* Availability < 50%

** One or more events measured at wind speed above 5 m/s, not included into calculation

Equivalent Continuous Sound Pressure Level

MP04 Pavlov

July 2019



Equivalent Continuous Sound Pressure Level

MP05 Hostivice

July 2019

	Total Sound [dB]		Aircraft Sound [dB]		Ambient Sound [dB]	
	L _{Aeq,T} DAY	L _{Aeq,T} NIGHT	L _{Aeq,T} DAY	L _{Aeq,T} NIGHT	L _{Aeq,T} DAY	L _{Aeq,T} NIGHT
01/07/2019	49.8	44.0	44.4	40.7	48.3	41.2
02/07/2019	49.4	45.8	45.2	42.5	47.3	43.1
03/07/2019	48.5	44.7	43.0	40.0	47.1	42.8
04/07/2019	48.0	46.3	44.3	40.6	45.5	45.0
05/07/2019	49.0	44.1	45.9	39.5	46.1	42.2
06/07/2019	48.7	41.9	45.3**	38.1	46.0	39.6
07/07/2019	49.2	43.4	45.3	40.3	46.9	40.4
08/07/2019	49.6	45.5	44.6	42.0	47.9	42.9
09/07/2019	50.3	46.8	46.3	40.9	48.1	45.5
10/07/2019	50.4	44.7	45.8	40.8	48.6	42.4
11/07/2019	49.8	44.5	46.6	39.8	47.0	42.7
12/07/2019	52.5	45.0	47.9	41.9	50.6	42.1
13/07/2019	49.3	44.6	45.6	42.1	46.9	41.0
14/07/2019	49.9	45.3	44.8	43.0	48.3	41.5
15/07/2019	51.2	46.2	46.2	42.4	49.6	43.8
16/07/2019	49.9	44.1	46.3	39.9	47.4	42.1
17/07/2019	49.1	45.7	45.6	41.9	46.4	43.3
18/07/2019	49.0	43.8	42.2	35.0	48.0	43.2
19/07/2019	49.5	45.0	46.0	39.3	47.0	43.7
20/07/2019	48.3	45.3	44.2	39.5	46.2	43.9
21/07/2019	51.2	45.8	46.4	41.1	49.5	44.1
22/07/2019	49.5	45.3	45.0	40.0	47.6	43.7
23/07/2019	50.0	45.3	39.0	36.7	49.6	44.7
24/07/2019	48.5	45.9	40.5	37.7	47.8	45.1
25/07/2019	48.8	45.2	41.6	39.4	47.9	43.9
26/07/2019	48.2	43.0	39.1	32.5	47.6	42.6
27/07/2019	48.0	44.5	32.7*	33.4	47.8	44.1
28/07/2019	45.8	44.4	39.2	22.9*	44.7	44.3
29/07/2019	49.4	46.7	42.8	38.2	48.4	46.0
30/07/2019	50.7	44.8	45.2	39.6	49.2	43.2
31/07/2019	54.2	44.1	44.4	38.8	53.8	42.5
Sum	49.8	45.0	44.7	40.0	48.2	43.4

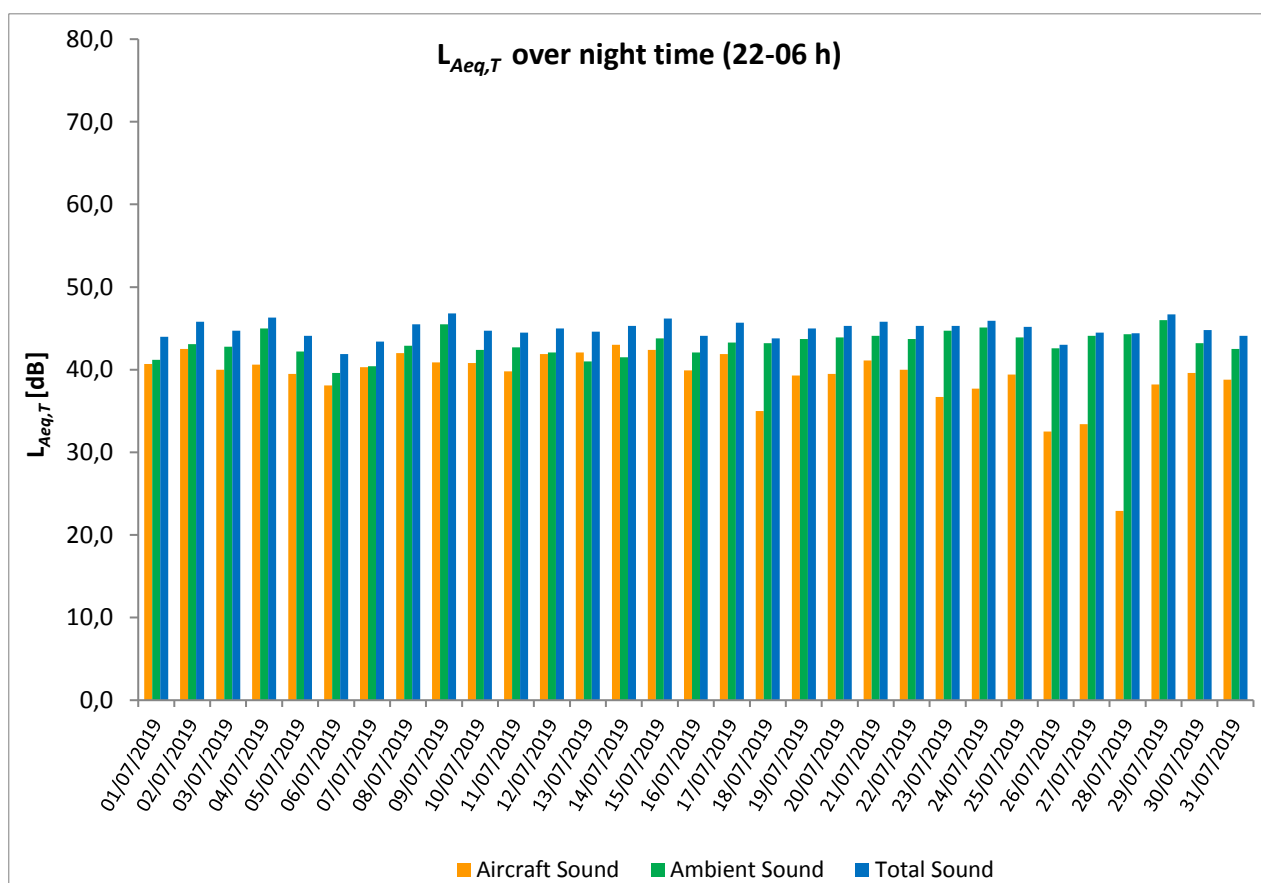
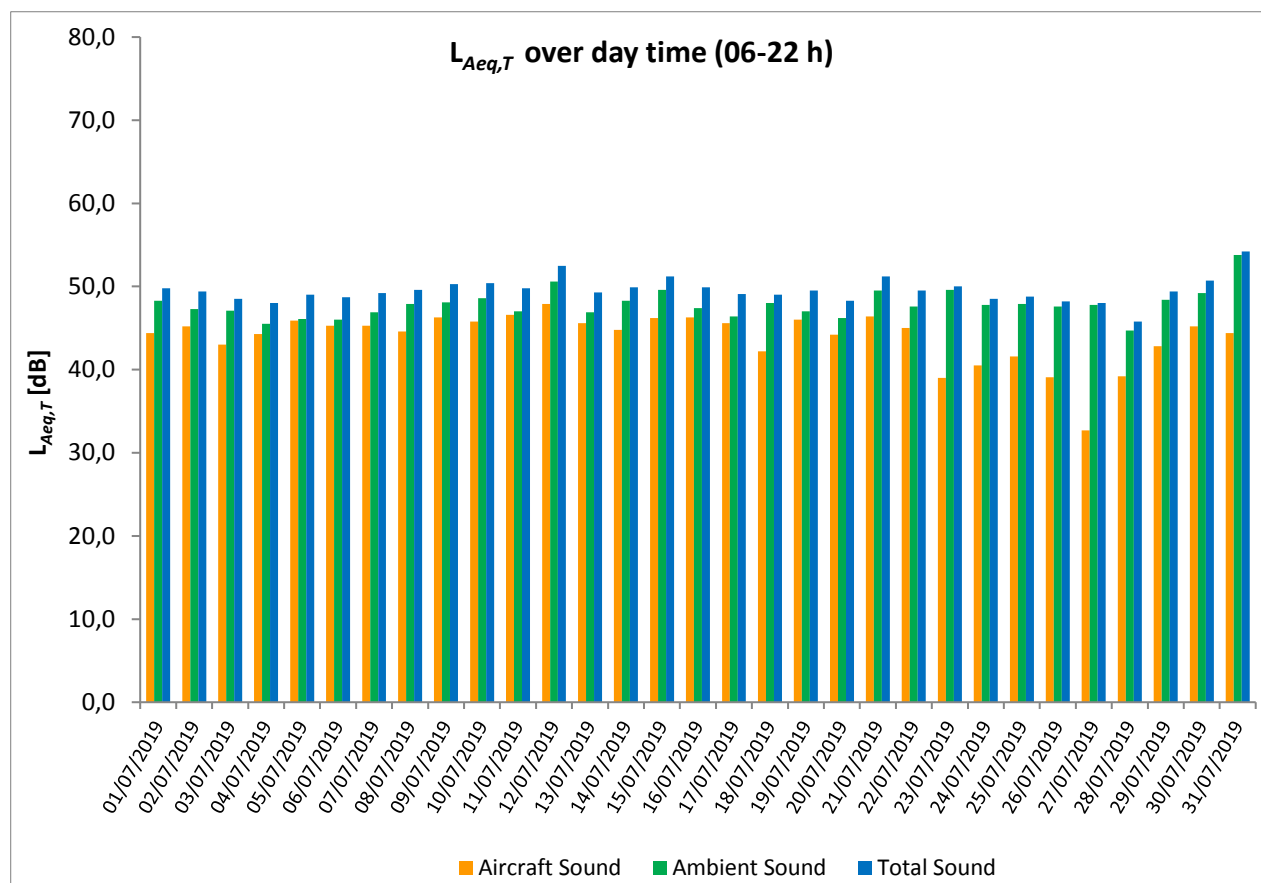
* Availability < 50% (distance to background noise too low)

** One or more events measured at wind speed above 5 m/s, not included into calculation

Equivalent Continuous Sound Pressure Level

MP05 Hostivice

July 2019



Equivalent Continuous Sound Pressure Level

MP06 Dobrovíz

July 2019

	Total Sound [dB]		Aircraft Sound [dB]		Ambient Sound [dB]	
	L _{Aeq,T} DAY	L _{Aeq,T} NIGHT	L _{Aeq,T} DAY	L _{Aeq,T} NIGHT	L _{Aeq,T} DAY	L _{Aeq,T} NIGHT
01/07/2019	55.6	49.4	52.5**	46.7	52.7	46.1
02/07/2019	55.7	48.6	52.9**	43.4	52.5	47.0
03/07/2019	57.9	49.3	49.9**	45.5	57.1	46.9
04/07/2019	55.6	50.9	52.2	44.5	53.0	49.8
05/07/2019	54.3	49.1	52.8	47.3	49.0	44.4
06/07/2019	54.7	50.2	52.5**	45.4	50.6	48.5
07/07/2019	57.6	53.8	56.9	51.2	49.6	50.3
08/07/2019	60.1	48.5	59.4**	47.3	51.4	42.2
09/07/2019	55.6	48.3	53.7	47.2	51.0	41.7
10/07/2019	55.4	47.8	53.4	46.4	51.1	42.1
11/07/2019	57.2	51.5	53.6	46.7	54.7	49.8
12/07/2019	56.3	49.7	54.5	48.0	51.4	44.8
13/07/2019	60.5	48.2	59.9	47.3	51.9	41.0
14/07/2019	57.4	46.9	56.3**	44.0	50.7	43.8
15/07/2019	56.4	47.2	53.8	44.6	52.8	43.8
16/07/2019	55.4	50.4	53.4	46.8	51.1	48.0
17/07/2019	55.7	48.7	53.4	47.2	51.7	43.2
18/07/2019	56.3	50.7	52.6	49.3	53.9	44.9
19/07/2019	55.6	49.4	53.5	47.1	51.3	45.5
20/07/2019	62.1	48.5	52.9	46.7	61.5	43.7
21/07/2019	57.4	49.2	55.1	47.5	53.5	44.4
22/07/2019	55.5	50.3	52.2	47.7	52.8	46.8
23/07/2019	61.3	47.2	60.1	45.4	55.1	42.4
24/07/2019	61.1	50.1	60.8	47.1	50.0	47.2
25/07/2019	54.5	51.6	51.6	50.1	51.4	46.3
26/07/2019	53.0	52.8	48.9**	51.7	50.8	46.2
27/07/2019	55.2	54.0	53.0	53.1	51.2	46.7
28/07/2019	55.4	52.9	52.3	45.0	52.4	52.1
29/07/2019	53.3	53.4	50.7	52.9	49.7	43.3
30/07/2019	55.2	47.3	52.6	46.0	51.8	41.3
31/07/2019	54.3	47.7	52.9	46.5	48.8	41.4
Sum	57.2	50.3	55.0	48.0	53.2	46.3

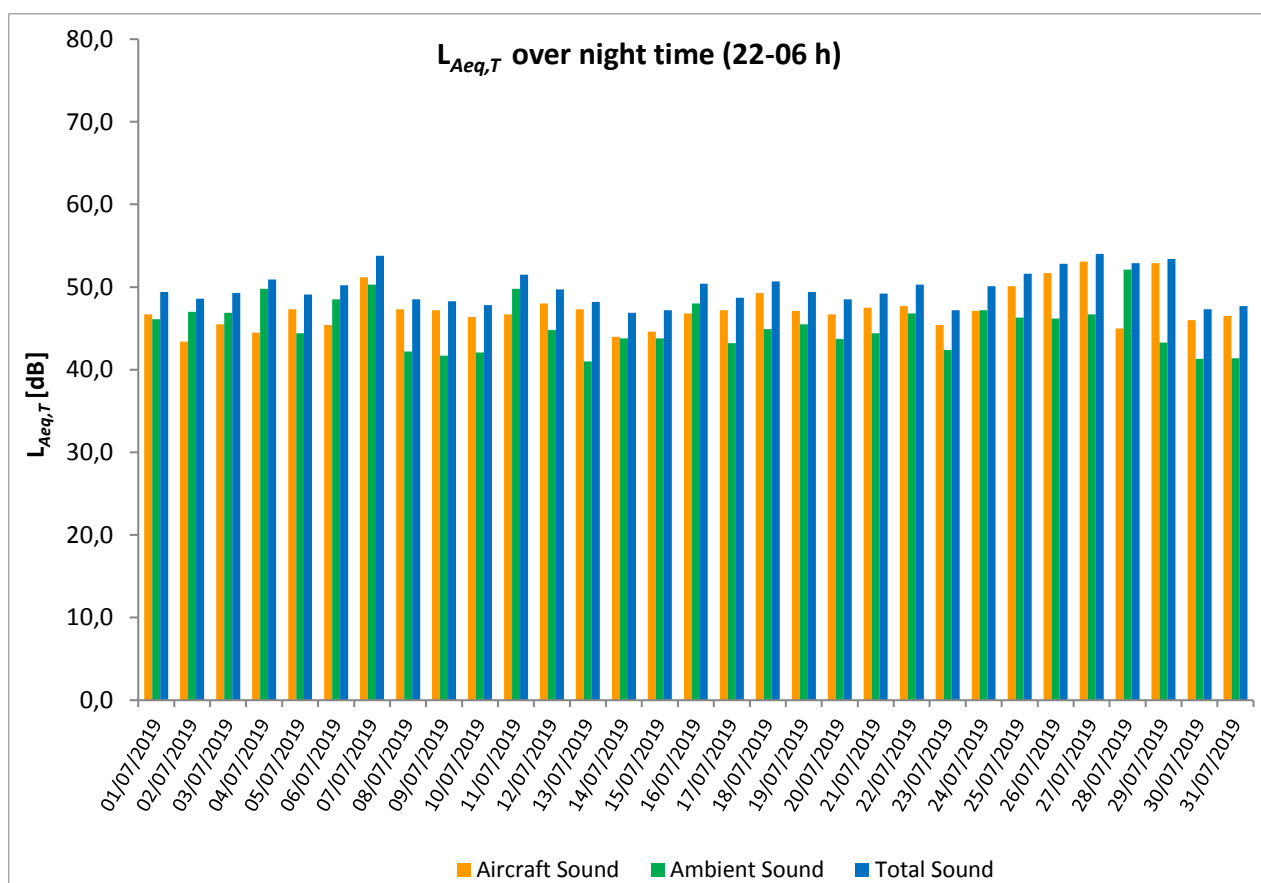
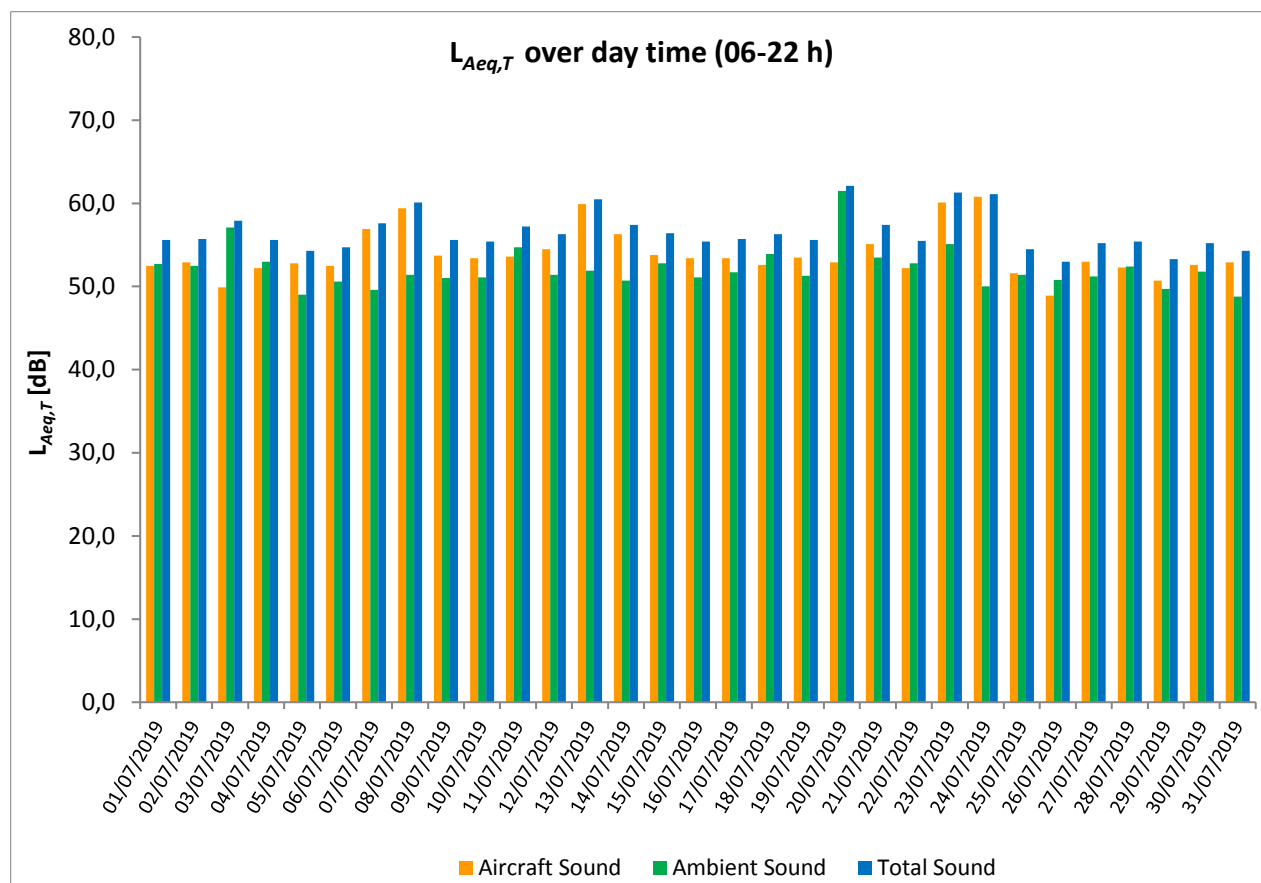
* Availability < 50%

** One or more events measured at wind speed above 5 m/s, not included into calculation

Equivalent Continuous Sound Pressure Level

MP06 Dobrovíz

July 2019



Equivalent Continuous Sound Pressure Level

MP07 Kněževy

July 2019

	Total Sound [dB]		Aircraft Sound [dB]		Ambient Sound [dB]	
	L _{Aeq,T} DAY	L _{Aeq,T} NIGHT	L _{Aeq,T} DAY	L _{Aeq,T} NIGHT	L _{Aeq,T} DAY	L _{Aeq,T} NIGHT
01/07/2019	54.2	54.6	51.2**	53.9	51.1	46.2
02/07/2019	51.7	47.1	47.0**	44.5	49.9	43.7
03/07/2019	54.1	48.6	51.1	45.4	51.1	45.8
04/07/2019	54.0	50.6	51.7	48.9	50.2	45.9
05/07/2019	52.9	52.9	50.1	51.9	49.7	45.9
06/07/2019	54.6	50.9	52.8	48.4	49.7	47.2
07/07/2019	50.8	48.4	47.3	46.5	48.2	43.9
08/07/2019	53.0	47.1	50.0	44.4	50.0	43.8
09/07/2019	50.6	47.5	44.6	46.0	49.3	42.1
10/07/2019	50.9	45.2	47.0	41.5	48.6	42.9
11/07/2019	56.1	52.8	53.7	51.2	52.3	47.5
12/07/2019	57.9	51.7	56.2	50.0	53.0	46.8
13/07/2019	52.2	50.2	50.4**	48.9	47.5	44.1
14/07/2019	54.6	47.2	52.3	45.5	50.9	42.2
15/07/2019	51.4	50.0	47.6	48.2	49.1	45.1
16/07/2019	51.6	47.8	46.5**	45.3	50.1	44.3
17/07/2019	50.8	50.5	47.1	49.1	48.3	45.1
18/07/2019	55.6	53.0	54.0	51.1	50.4	48.5
19/07/2019	56.0	54.5	54.7	52.8	50.1	49.6
20/07/2019	56.3	55.1	54.6	53.1	51.6	50.8
21/07/2019	57.6	55.2	55.9	54.4	52.6	47.3
22/07/2019	53.6	50.6	51.3	49.6	49.9	44.0
23/07/2019	58.1	47.4	50.0	44.7	57.3	44.0
24/07/2019	53.0	53.6	50.6	51.3	49.1	49.8
25/07/2019	54.0	53.6	51.8	50.7	50.0	50.6
26/07/2019	54.5	50.5	52.0	48.1	50.8	46.9
27/07/2019	56.1	52.9	54.7	51.5	50.6	47.3
28/07/2019	56.4	53.8	53.6	48.7	53.3	52.2
29/07/2019	53.5	51.3	51.3	49.0	49.5	47.5
30/07/2019	51.7	48.0	49.3	46.7	48.1	42.0
31/07/2019	56.8	50.4	55.3	49.1	51.4	44.4
Sum	54.6	51.6	52.1	49.8	51.0	46.9

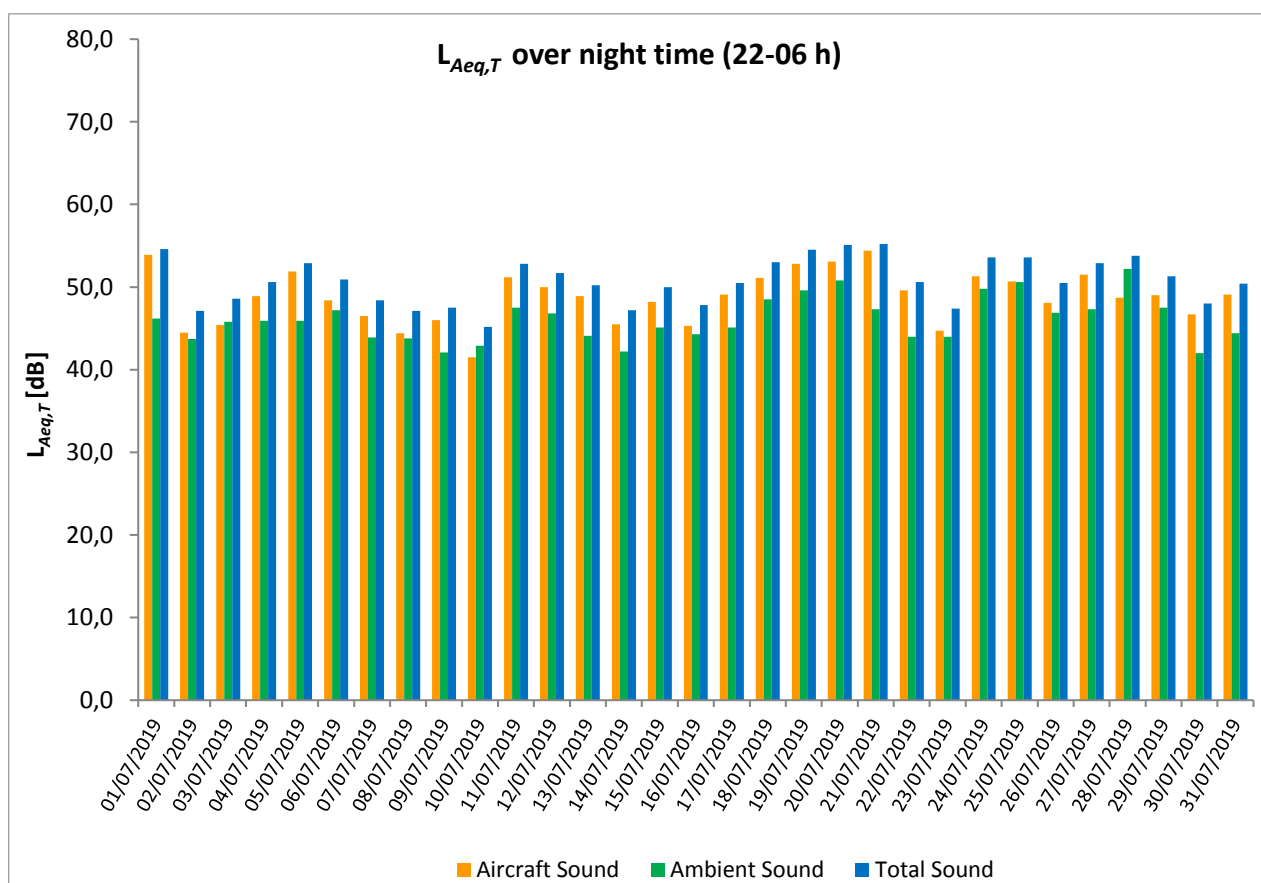
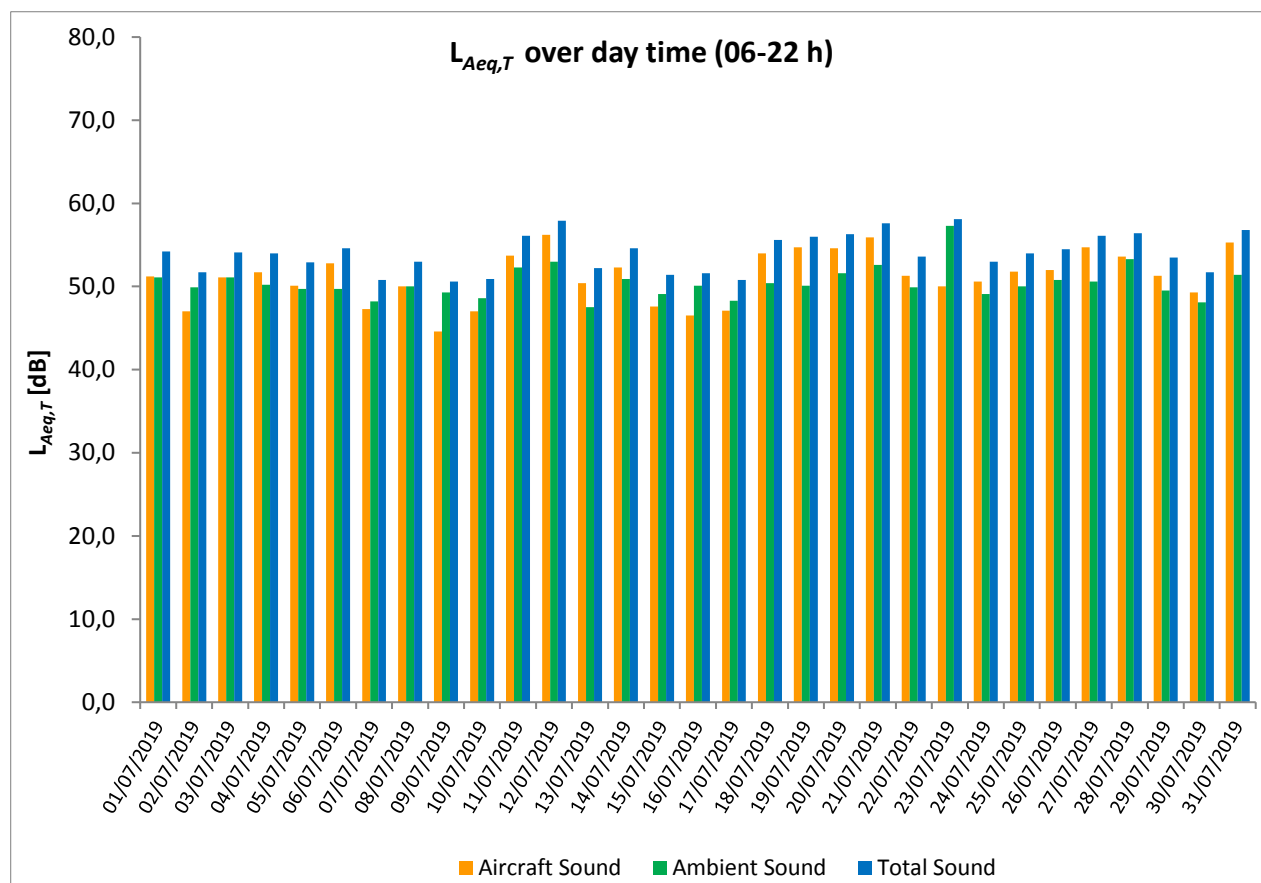
* Availability < 50%

** One or more events measured at wind speed above 5 m/s, not included into calculation

Equivalent Continuous Sound Pressure Level

MP07 Kněžves

July 2019



Equivalent Continuous Sound Pressure Level

MP08 Horoměřice střed

July 2019

	Total Sound [dB]		Aircraft Sound [dB]		Ambient Sound [dB]	
	L _{Aeq,T} DAY	L _{Aeq,T} NIGHT	L _{Aeq,T} DAY	L _{Aeq,T} NIGHT	L _{Aeq,T} DAY	L _{Aeq,T} NIGHT
01/07/2019	53.4	51.8	51.3	47.8	49.3	49.6
02/07/2019	55.9	51.9	52.4	49.8	53.3	47.8
03/07/2019	57.8	51.3	55.6	50.4	53.8	44.0
04/07/2019	57.8	54.2	55.2	53.7	54.4	43.8
05/07/2019	54.1	51.1	52.7	49.3	48.7	46.3
06/07/2019	53.1	48.6	52.2	46.6	45.9	44.3
07/07/2019	52.8	48.3	52.0	46.7	45.2	43.3
08/07/2019	51.8	48.8	50.3	47.4	46.5	43.3
09/07/2019	53.7	48.5	52.7	46.8	46.9	43.4
10/07/2019	55.3	49.0	52.5	47.7	52.2	43.3
11/07/2019	54.7	49.2	52.4	47.3	51.0	44.6
12/07/2019	54.0	49.9	53.1	48.3	46.8	44.7
13/07/2019	52.0	48.5	50.4	47.5	46.9	41.7
14/07/2019	56.2	51.2	55.4	50.7	48.4	41.1
15/07/2019	55.3	52.5	52.9	52.2	51.5	40.9
16/07/2019	55.5	50.9	53.5	50.1	51.0	42.9
17/07/2019	54.5	51.4	52.4	50.9	50.2	41.6
18/07/2019	57.9	51.7	55.2	50.9	54.5	43.8
19/07/2019	54.6	48.8	53.2	47.7	48.9	42.4
20/07/2019	54.7	49.9	52.1	47.9	51.3	45.6
21/07/2019	54.9	49.7	52.6	47.6	51.0	45.6
22/07/2019	57.9	48.8	52.3	47.6	56.5	42.8
23/07/2019	56.7	50.6	50.0	48.6	55.7	46.3
24/07/2019	54.3	50.4	50.3	48.1	52.1	46.5
25/07/2019	56.3	51.2	54.2	49.9	52.0	45.2
26/07/2019	58.2	51.9	56.0	50.7	54.3	45.9
27/07/2019	57.8	53.6	56.7	53.2	51.0	42.9
28/07/2019	58.7	54.3	57.4	54.0	53.0	42.9
29/07/2019	56.3	53.3	55.2	52.6	49.6	44.7
30/07/2019	55.1	48.0	52.1	47.0	52.1	41.3
31/07/2019	56.6	48.4	53.7	48.0	53.4	38.1
Sum	55.8	51.0	53.6	49.9	51.8	44.5

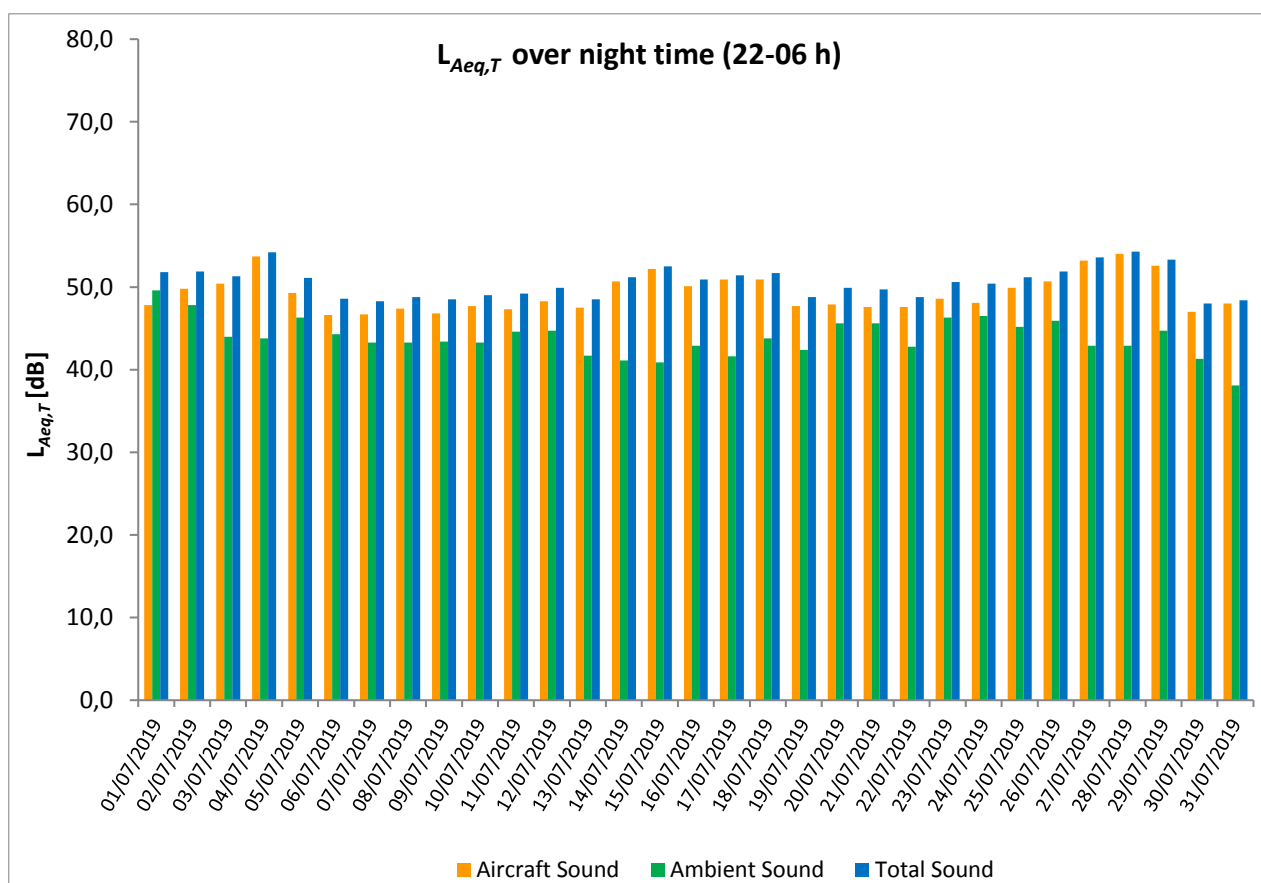
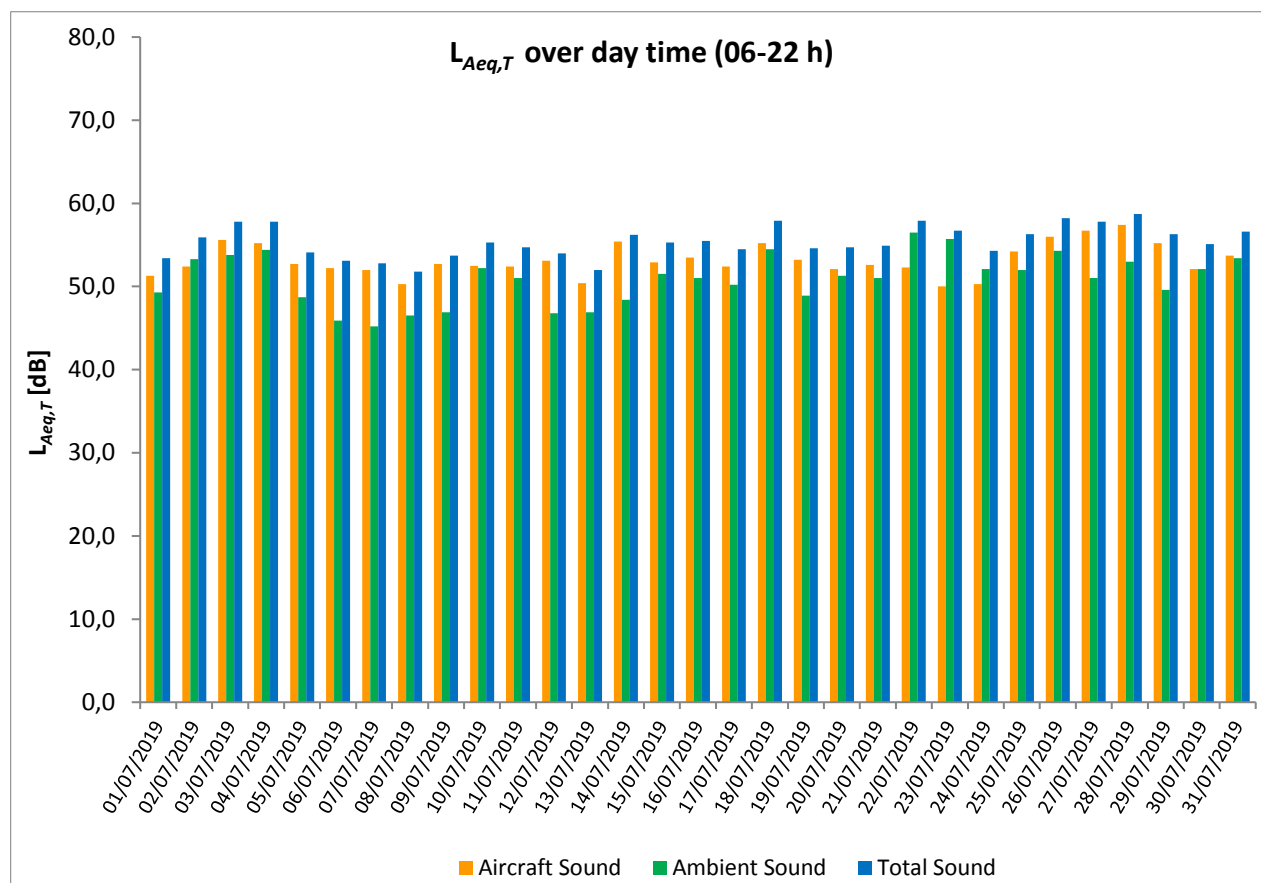
* Availability < 50%

** One or more events measured at wind speed above 5 m/s, not included into calculation

Equivalent Continuous Sound Pressure Level

MP08 Horoměřice střed

July 2019



Equivalent Continuous Sound Pressure Level

MP09 Praha - Přední Kopanina

July 2019

	Total Sound [dB]		Aircraft Sound [dB]		Ambient Sound [dB]	
	L _{Aeq,T} DAY	L _{Aeq,T} NIGHT	L _{Aeq,T} DAY	L _{Aeq,T} NIGHT	L _{Aeq,T} DAY	L _{Aeq,T} NIGHT
01/07/2019	53.8	49.2	46.8**	45.9	52.8	46.5
02/07/2019	53.9	53.5	51.5	53.0	50.3	43.7
03/07/2019	65.6	53.4	58.5	53.0	64.6	42.3
04/07/2019	58.1	57.2	57.5	57.1	49.0	42.1
05/07/2019	52.2	51.9	49.4**	51.2	49.0	43.5
06/07/2019	52.0	45.6	49.1**	43.0	49.0	42.1
07/07/2019	51.1	46.8	48.0	43.8	48.2	43.7
08/07/2019	51.3	46.9	47.2**	43.8	49.1	44.0
09/07/2019	53.2	47.2	49.1	44.1	51.1	44.2
10/07/2019	52.2	47.8	48.6	44.4	49.6	45.2
11/07/2019	53.0	48.0	50.5	44.9	49.4	45.1
12/07/2019	54.9	50.9	50.9	46.8	52.8	48.8
13/07/2019	51.9	48.9	48.1	46.7	49.6	44.9
14/07/2019	59.1	54.2	58.7	53.8	48.4	43.2
15/07/2019	53.2	56.1	51.4	55.7	48.4	45.8
16/07/2019	56.4	51.3	50.1	50.5	55.3	43.4
17/07/2019	53.0	54.2	51.5	53.9	47.5	42.3
18/07/2019	58.4	53.3	57.8	52.8	49.6	43.3
19/07/2019	53.8	66.4	51.1	46.5	50.5	66.4
20/07/2019	51.5	49.2	49.7	46.2	46.9	46.0
21/07/2019	54.6	47.5	51.4	45.4	51.7	43.4
22/07/2019	51.8	46.7	49.2	43.8	48.4	43.6
23/07/2019	55.7	52.2	54.5	51.6	49.4	43.0
24/07/2019	55.1	49.3	52.9	48.3	51.0	42.5
25/07/2019	57.9	53.6	56.9	53.3	50.7	42.0
26/07/2019	60.5	54.3	59.2	54.0	54.5	42.2
27/07/2019	60.6	56.8	60.2	56.7	50.4	41.7
28/07/2019	60.7	56.7	60.5	56.6	47.4	40.7
29/07/2019	58.4	55.4	57.7	55.2	50.5	42.3
30/07/2019	52.5	47.6	49.6	45.1	49.4	44.0
31/07/2019	57.4	47.7	56.1	45.4	51.6	43.8
Sum	57.0	55.0	54.8	51.7	53.1	52.2

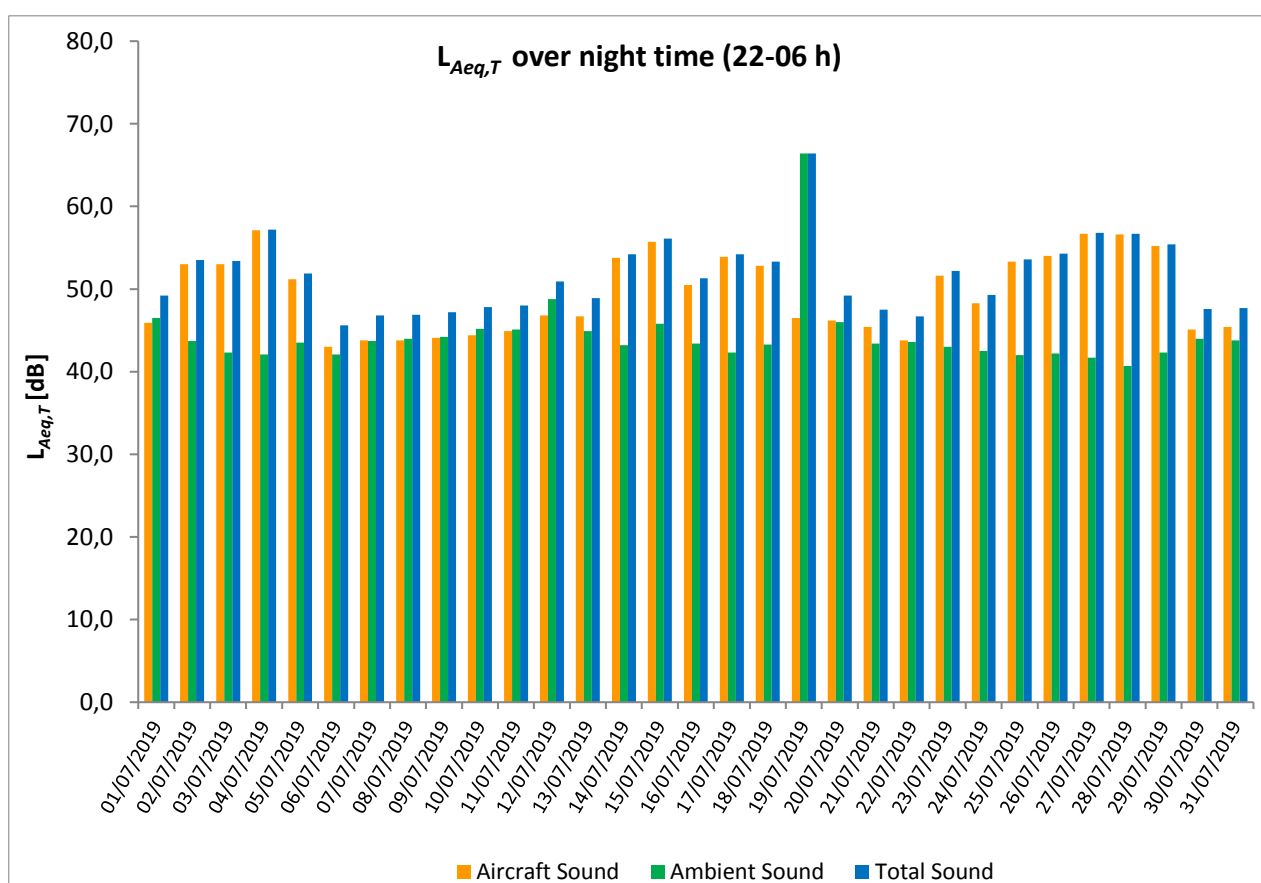
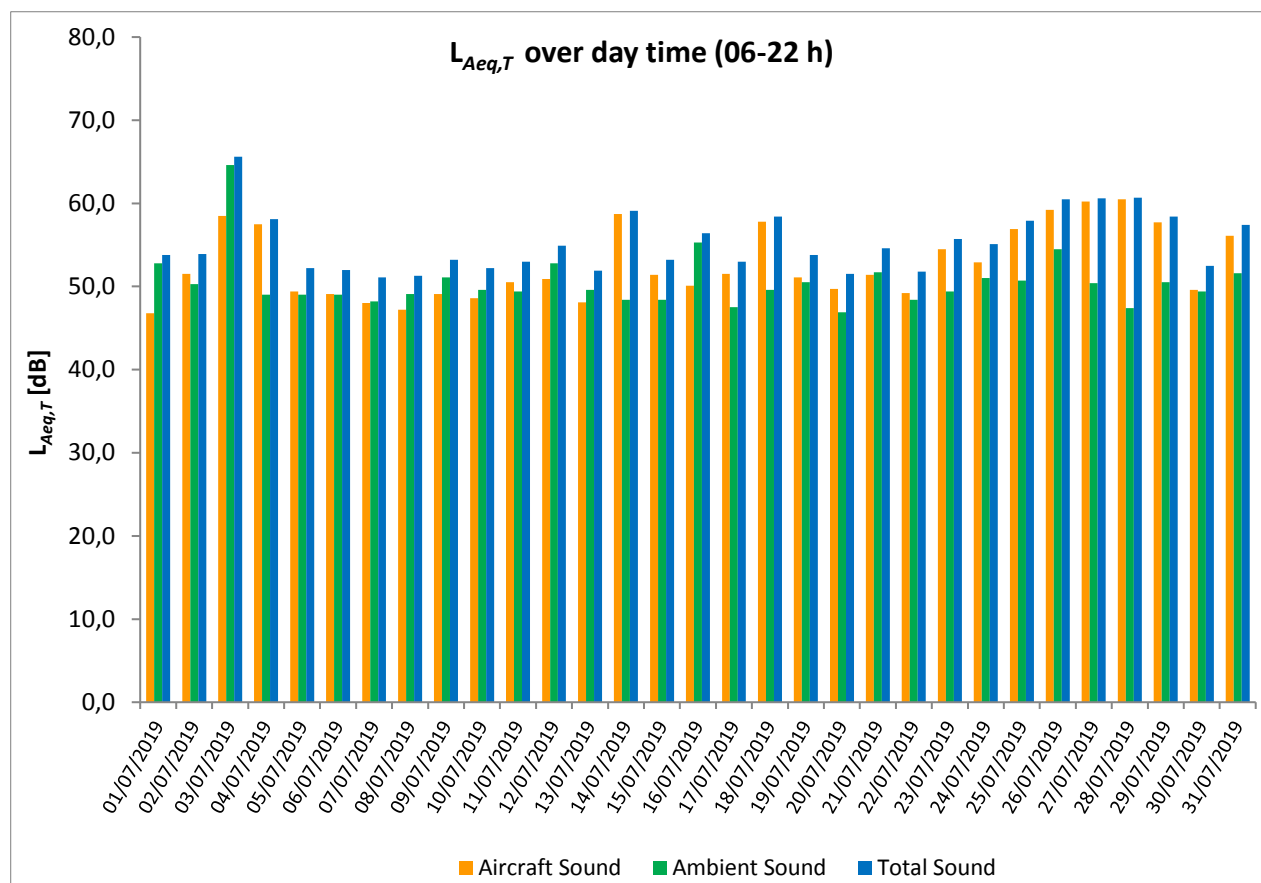
* Availability < 50%

** One or more events measured at wind speed above 5 m/s, not included into calculation

Equivalent Continuous Sound Pressure Level

MP09 Praha - Přední Kopanina

July 2019



Equivalent Continuous Sound Pressure Level

MP10 Horoměřice

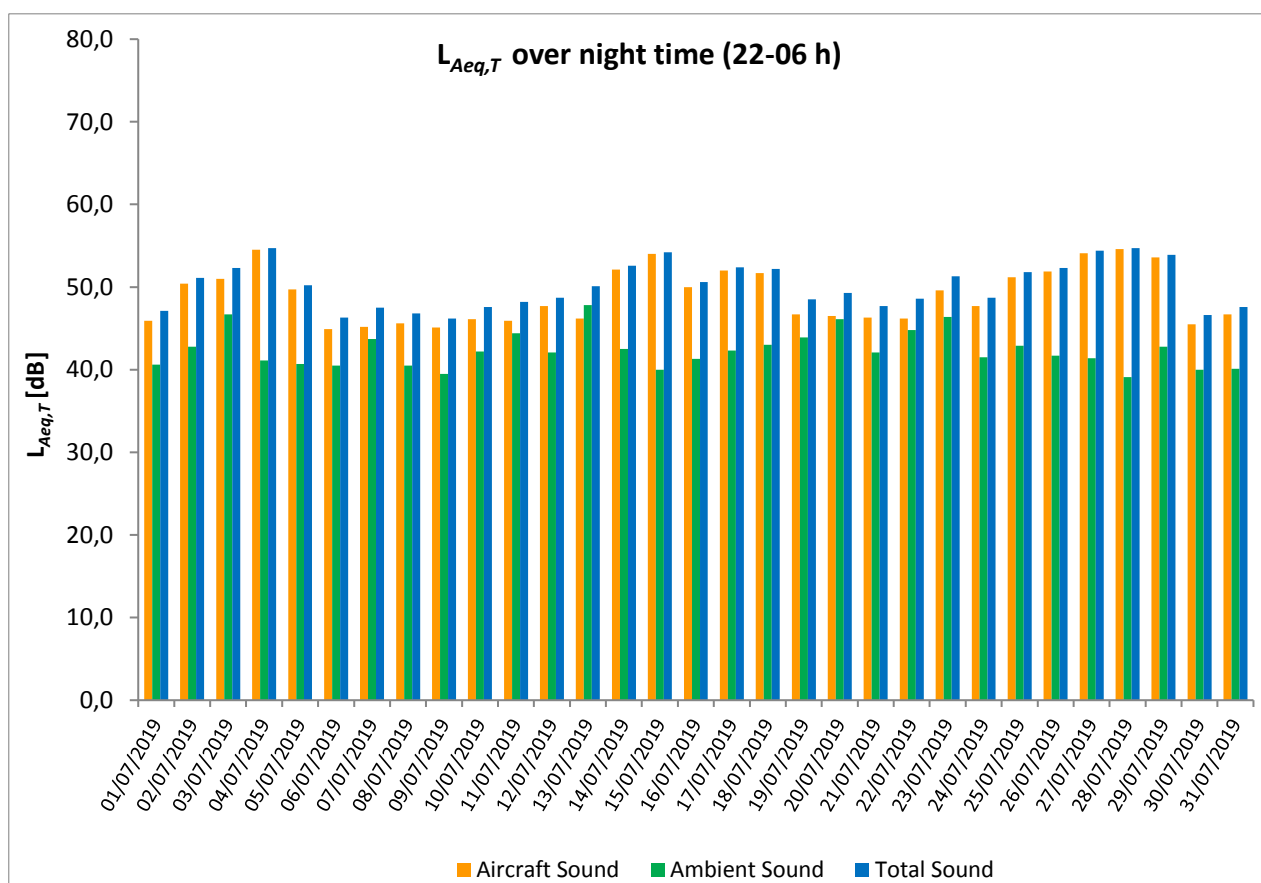
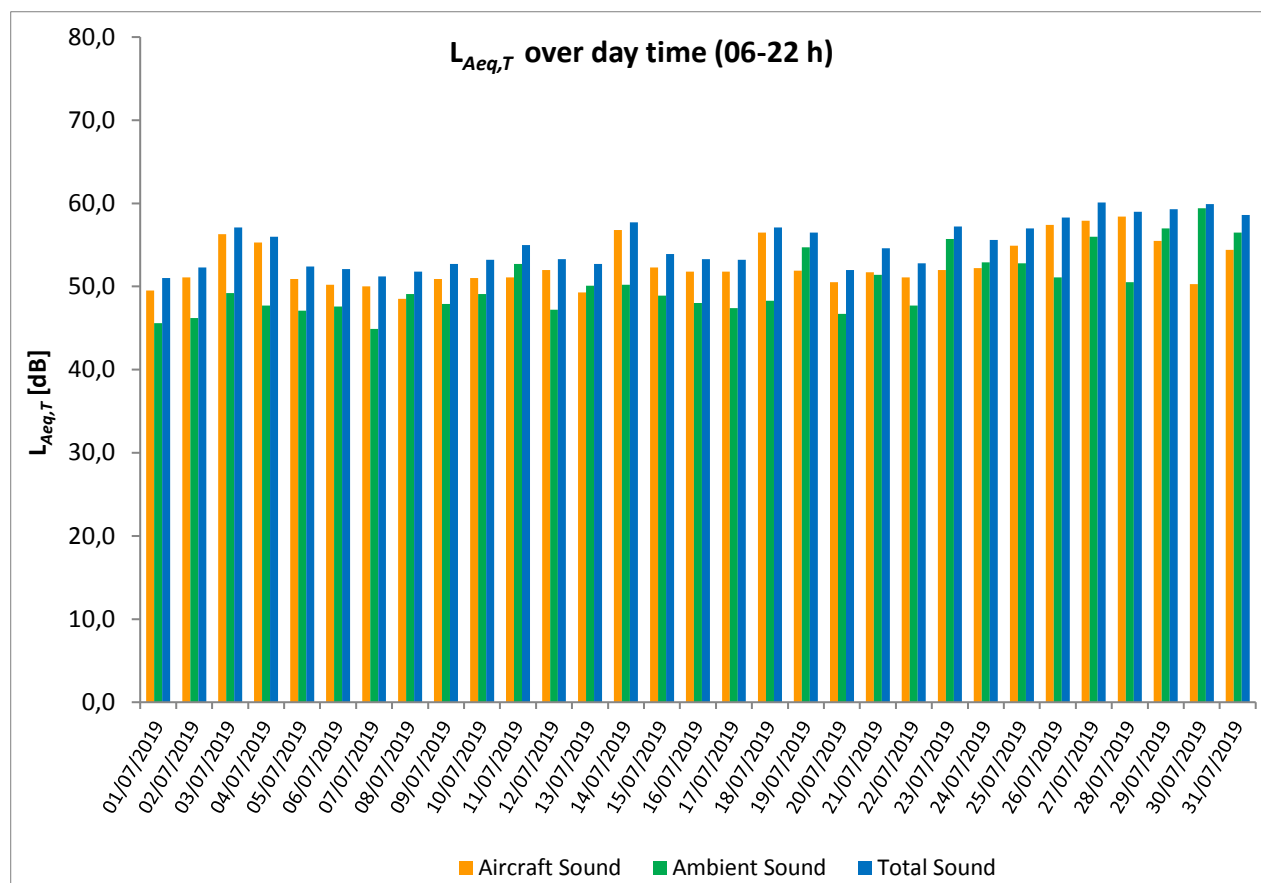
July 2019

	Total Sound [dB]		Aircraft Sound [dB]		Ambient Sound [dB]	
	L _{Aeq,T} DAY	L _{Aeq,T} NIGHT	L _{Aeq,T} DAY	L _{Aeq,T} NIGHT	L _{Aeq,T} DAY	L _{Aeq,T} NIGHT
01/07/2019	51.0	47.1	49.5	45.9	45.6	40.6
02/07/2019	52.3	51.1	51.1	50.4	46.2	42.8
03/07/2019	57.1	52.3	56.3	51.0	49.2	46.7
04/07/2019	56.0	54.7	55.3	54.5	47.7	41.1
05/07/2019	52.4	50.2	50.9	49.7	47.1	40.7
06/07/2019	52.1	46.3	50.2**	44.9	47.6	40.5
07/07/2019	51.2	47.5	50.0	45.2	44.9	43.7
08/07/2019	51.8	46.8	48.5	45.6	49.1	40.5
09/07/2019	52.7	46.2	50.9	45.1	47.9	39.5
10/07/2019	53.2	47.6	51.0	46.1	49.1	42.2
11/07/2019	55.0	48.2	51.1	45.9	52.7	44.4
12/07/2019	53.3	48.7	52.0	47.7	47.2	42.1
13/07/2019	52.7	50.1	49.3	46.2	50.1	47.8
14/07/2019	57.7	52.6	56.8	52.1	50.2	42.5
15/07/2019	53.9	54.2	52.3	54.0	48.9	40.0
16/07/2019	53.3	50.6	51.8	50.0	48.0	41.3
17/07/2019	53.2	52.4	51.8	52.0	47.4	42.3
18/07/2019	57.1	52.2	56.5	51.7	48.3	43.0
19/07/2019	56.5	48.5	51.9	46.7	54.7	43.9
20/07/2019	52.0	49.3	50.5	46.5	46.7	46.1
21/07/2019	54.6	47.7	51.7	46.3	51.4	42.1
22/07/2019	52.8	48.6	51.1	46.2	47.7	44.8
23/07/2019	57.2	51.3	52.0	49.6	55.7	46.4
24/07/2019	55.6	48.7	52.2	47.7	52.9	41.5
25/07/2019	57.0	51.8	54.9	51.2	52.8	42.9
26/07/2019	58.3	52.3	57.4	51.9	51.1	41.7
27/07/2019	60.1	54.4	57.9	54.1	56.0	41.4
28/07/2019	59.0	54.7	58.4	54.6	50.5	39.1
29/07/2019	59.3	53.9	55.5	53.6	57.0	42.8
30/07/2019	59.9	46.6	50.3	45.5	59.4	40.0
31/07/2019	58.6	47.6	54.4	46.7	56.5	40.1
Sum	56.0	51.0	53.7	50.2	52.1	43.0

* Availability < 50%

** One or more events measured at wind speed above 5 m/s, not included into calculation

Equivalent Continuous Sound Pressure Level
MP10 Horoměřice
July 2019



Equivalent Continuous Sound Pressure Level

MP11 Roztoky

July 2019

	Total Sound [dB]		Aircraft Sound [dB]		Ambient Sound [dB]	
	L _{Aeq,T} DAY	L _{Aeq,T} NIGHT	L _{Aeq,T} DAY	L _{Aeq,T} NIGHT	L _{Aeq,T} DAY	L _{Aeq,T} NIGHT
01/07/2019	55.8	48.7	50.8	47.5	54.2	42.6
02/07/2019	57.0	48.8	51.8	47.8	55.4	42.2
03/07/2019	54.3	49.4	53.5	48.4	46.6	42.7
04/07/2019	54.3	52.4	53.7	51.4	45.7	45.5
05/07/2019	53.4	48.9	52.5	47.2	46.3	44.0
06/07/2019	53.2	48.2	51.4	45.5	48.4	44.9
07/07/2019	52.4	47.6	51.6	46.2	44.7	41.9
08/07/2019	51.1	48.2	49.6	47.2	45.9	41.3
09/07/2019	54.2	47.1	52.6	46.3	49.0	39.3
10/07/2019	53.9	48.7	52.5	47.9	48.2	41.3
11/07/2019	53.3	47.8	52.5	46.6	45.5	41.8
12/07/2019	54.1	48.8	52.7	47.7	48.5	42.2
13/07/2019	51.2	48.8	50.1	48.0	44.6	41.4
14/07/2019	54.6	49.3	53.6	48.5	47.8	41.6
15/07/2019	53.3	50.5	52.4	50.0	46.0	41.5
16/07/2019	53.4	49.2	52.3	48.2	46.9	42.3
17/07/2019	52.8	49.6	52.0	48.8	45.4	41.7
18/07/2019	54.4	49.9	53.6	48.7	46.5	43.6
19/07/2019	53.5	48.6	52.3	46.4	47.0	44.6
20/07/2019	52.2	48.5	51.2	46.8	45.3	43.8
21/07/2019	55.1	48.5	52.4	46.5	51.8	44.3
22/07/2019	53.2	48.5	52.0	46.9	46.9	43.3
23/07/2019	52.9	48.6	48.1	47.0	51.1	43.5
24/07/2019	49.0	48.4	47.2	46.4	44.4	43.9
25/07/2019	53.4	49.8	52.3	47.3	47.0	46.2
26/07/2019	54.4	50.7	53.4	48.4	47.5	46.8
27/07/2019	55.0	51.3	54.2	50.1	47.2	45.1
28/07/2019	54.6	51.7	53.9	50.9	46.3	43.9
29/07/2019	53.7	51.0	53.0	50.2	45.6	42.8
30/07/2019	52.7	47.8	51.3	46.3	47.1	42.4
31/07/2019	55.6	48.5	52.6	47.3	52.6	42.3
Sum	53.9	49.3	52.3	48.1	48.7	43.4

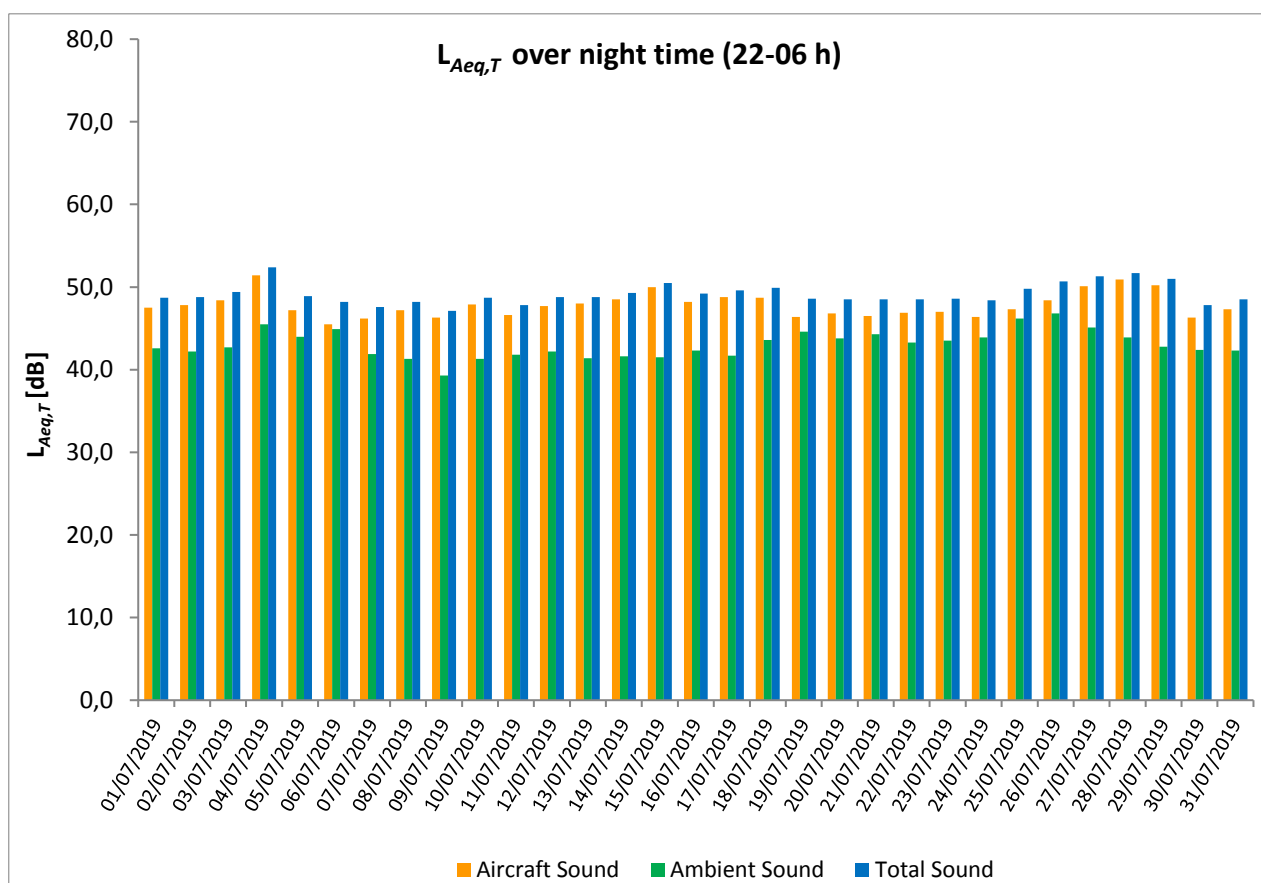
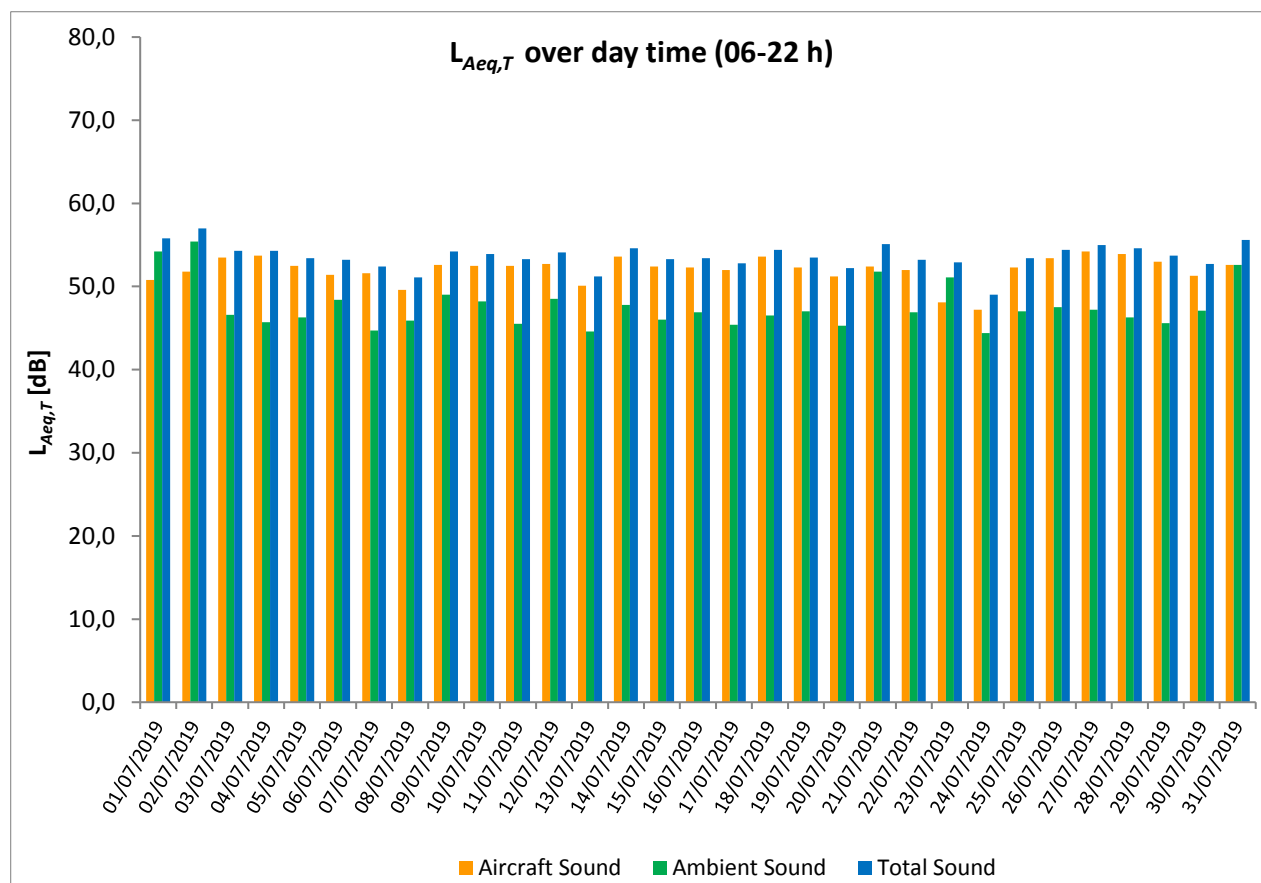
* Availability < 50%

** One or more events measured at wind speed above 5 m/s, not included into calculation

Equivalent Continuous Sound Pressure Level

MP11 Roztoky

July 2019



Equivalent Continuous Sound Pressure Level

MP12 Praha 17 - Řepry

July 2019

	Total Sound [dB]		Aircraft Sound [dB]		Ambient Sound [dB]	
	L _{Aeq,T} DAY	L _{Aeq,T} NIGHT	L _{Aeq,T} DAY	L _{Aeq,T} NIGHT	L _{Aeq,T} DAY	L _{Aeq,T} NIGHT
01/07/2019	54.1	43.8	52.6		48.8	43.8
02/07/2019	50.3	46.2	42.0		49.6	46.2
03/07/2019	50.5	40.3	44.5		49.3	40.3
04/07/2019	46.0	42.7	39.2		45.0	42.7
05/07/2019	44.0	40.8	33.0		43.6	40.8
06/07/2019	45.3	40.3			45.3	40.3
07/07/2019	57.7	43.5	57.5	39.0	44.1	41.5
08/07/2019	61.2	41.0	61.1		45.5	41.0
09/07/2019	46.4	39.3	34.9		46.1	39.3
10/07/2019	48.1	42.5	42.5		46.7	42.5
11/07/2019	47.1	42.4	41.8		45.6	42.4
12/07/2019	49.9	41.9	47.9		45.7	41.9
13/07/2019	61.3	41.1	61.2		46.8	41.1
14/07/2019	53.6	45.6	51.5		49.4	45.6
15/07/2019	49.5	39.8	44.3		47.9	39.8
16/07/2019	47.3	38.8	42.9		45.3	38.8
17/07/2019	50.5	39.1	49.7		42.7	39.1
18/07/2019	47.8	40.1	45.4		44.2	40.1
19/07/2019	46.1	45.0	37.9		45.4	45.0
20/07/2019	45.7	47.3	37.3		45.0	47.3
21/07/2019	53.8	49.4	51.8		49.6	49.4
22/07/2019	44.6	48.6	36.3		43.9	48.6
23/07/2019	62.5	48.7	62.4		46.1	48.7
24/07/2019	61.8	44.2	61.7		44.0	44.2
25/07/2019	49.5	41.2	41.4		48.7	41.2
26/07/2019	46.2	40.6	43.4		42.8	40.6
27/07/2019	45.7	41.9	40.3		44.2	41.9
28/07/2019	44.1	38.5	41.2		41.0	38.5
29/07/2019	54.9	39.1	54.5		44.4	39.1
30/07/2019	48.3	49.8	38.0		47.9	49.8
31/07/2019	55.6	47.5	54.7		48.4	47.5
Sum	54.7	44.4	54.0	24.1	46.5	44.3

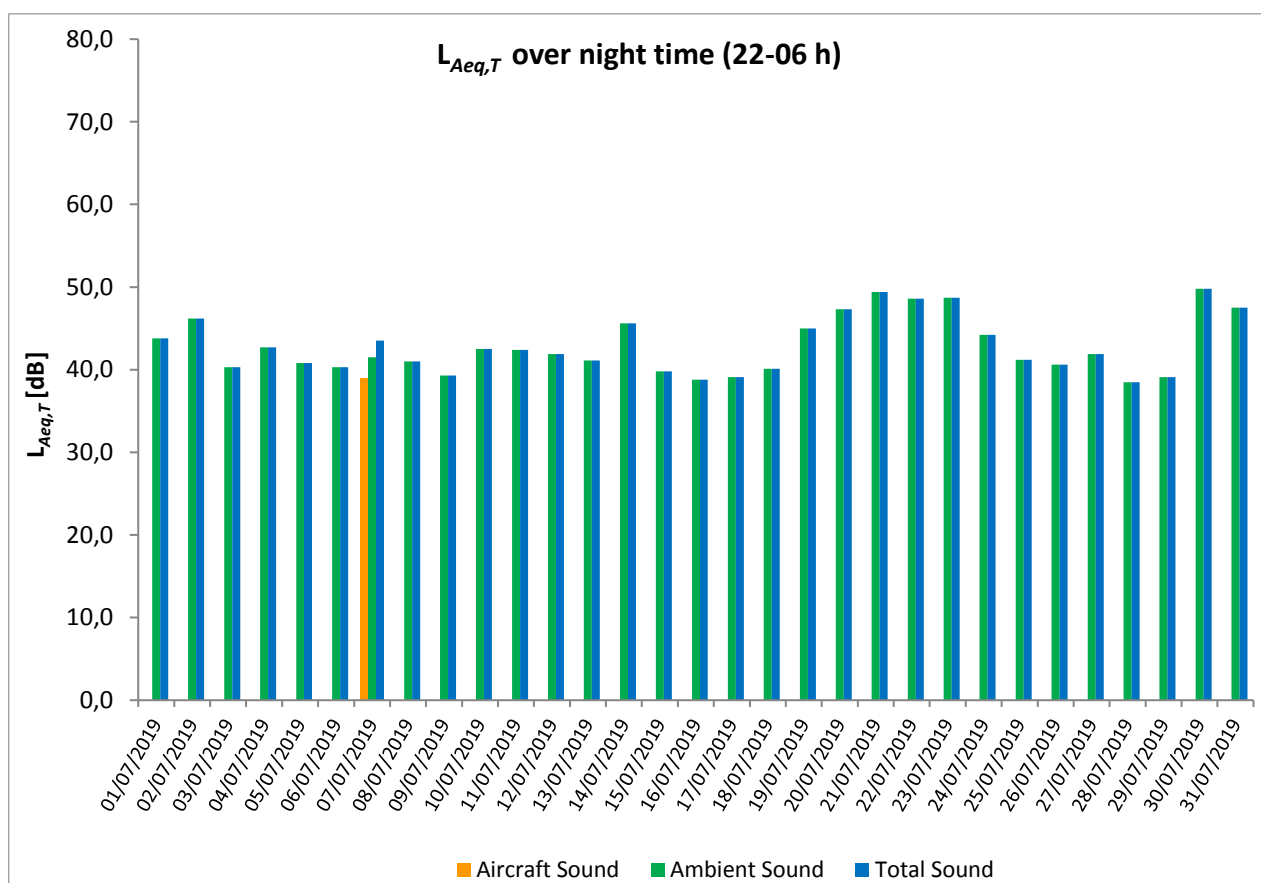
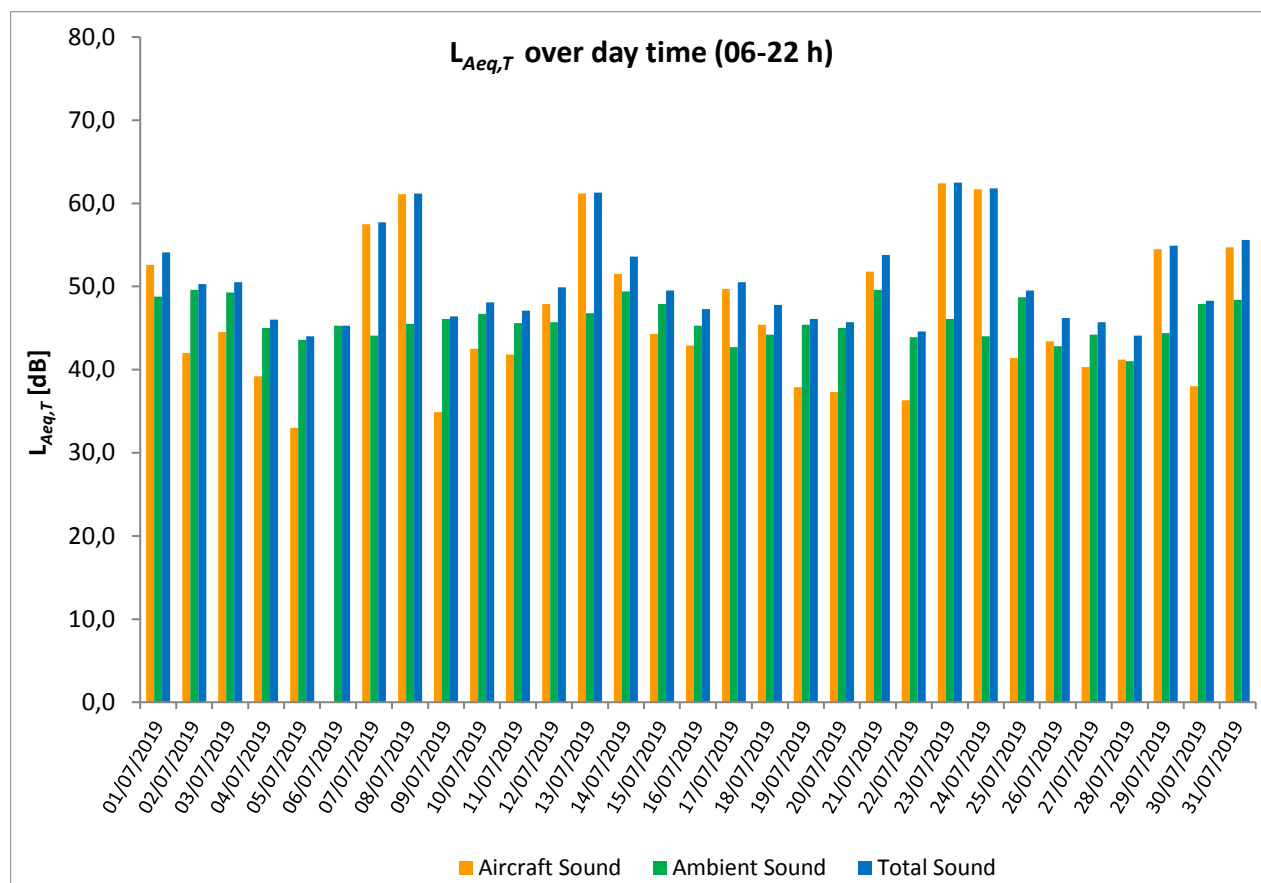
* Availability < 50%

** One or more events measured at wind speed above 5 m/s, not included into calculation

Equivalent Continuous Sound Pressure Level

MP12 Praha 17 - Řepy

July 2019



Equivalent Continuous Sound Pressure Level

MP13 Suchdol

July 2019

	Total Sound [dB]		Aircraft Sound [dB]		Ambient Sound [dB]	
	L _{Aeq,T} DAY	L _{Aeq,T} NIGHT	L _{Aeq,T} DAY	L _{Aeq,T} NIGHT	L _{Aeq,T} DAY	L _{Aeq,T} NIGHT
01/07/2019	56.4	52.4	55.8	52.0	47.6	42.0
02/07/2019	56.7	51.4	55.9	50.9	48.6	41.5
03/07/2019	56.9	52.4	55.7	51.1	50.4	46.5
04/07/2019	57.1	52.9	56.4	52.7	48.9	40.4
05/07/2019	58.6	50.5	56.2	50.1	54.9	40.2
06/07/2019	56.8	50.5	56.1**	50.1	48.5	39.4
07/07/2019	56.5	51.2	55.9	50.9	46.9	40.1
08/07/2019	56.5	51.7	54.1	51.5	52.8	39.0
09/07/2019	57.7	51.0	56.6	50.6	51.0	40.1
10/07/2019	57.4	52.7	56.8	52.5	48.2	40.4
11/07/2019	57.5	51.1	56.9	50.8	48.9	39.1
12/07/2019	58.3	52.9	57.6	52.4	50.0	42.8
13/07/2019	55.4	52.7	54.7	52.5	47.1	39.3
14/07/2019	57.3	51.7	56.6	51.4	49.1	39.5
15/07/2019	57.8	52.0	57.1	51.8	49.4	38.7
16/07/2019	57.7	52.0	57.0	51.8	49.4	39.3
17/07/2019	56.8	52.0	56.2	51.7	48.0	40.1
18/07/2019	56.9	52.2	56.4	51.8	47.8	41.7
19/07/2019	57.8	51.6	57.0	51.3	50.3	40.0
20/07/2019	56.8	52.3	56.0	51.5	48.8	44.9
21/07/2019	57.9	52.0	57.1	51.5	50.3	42.5
22/07/2019	57.5	52.2	56.7	51.8	50.2	40.7
23/07/2019	51.9	50.5	50.2	50.1	47.0	39.5
24/07/2019	53.3	50.7	49.4	50.2	51.1	41.0
25/07/2019	66.9	50.4	55.4	49.7	66.6	42.0
26/07/2019	60.6	51.1	55.3	50.6	59.1	41.9
27/07/2019	56.3	52.0	55.6	51.7	47.5	40.4
28/07/2019	56.2	53.0	55.7	52.7	46.8	41.4
29/07/2019	56.8	53.5	56.3	53.1	46.9	43.2
30/07/2019	56.8	51.8	56.2	51.4	48.1	41.4
31/07/2019	58.0	52.7	56.7	52.3	52.2	41.5
Sum	58.2	51.9	56.0	51.5	54.2	41.4

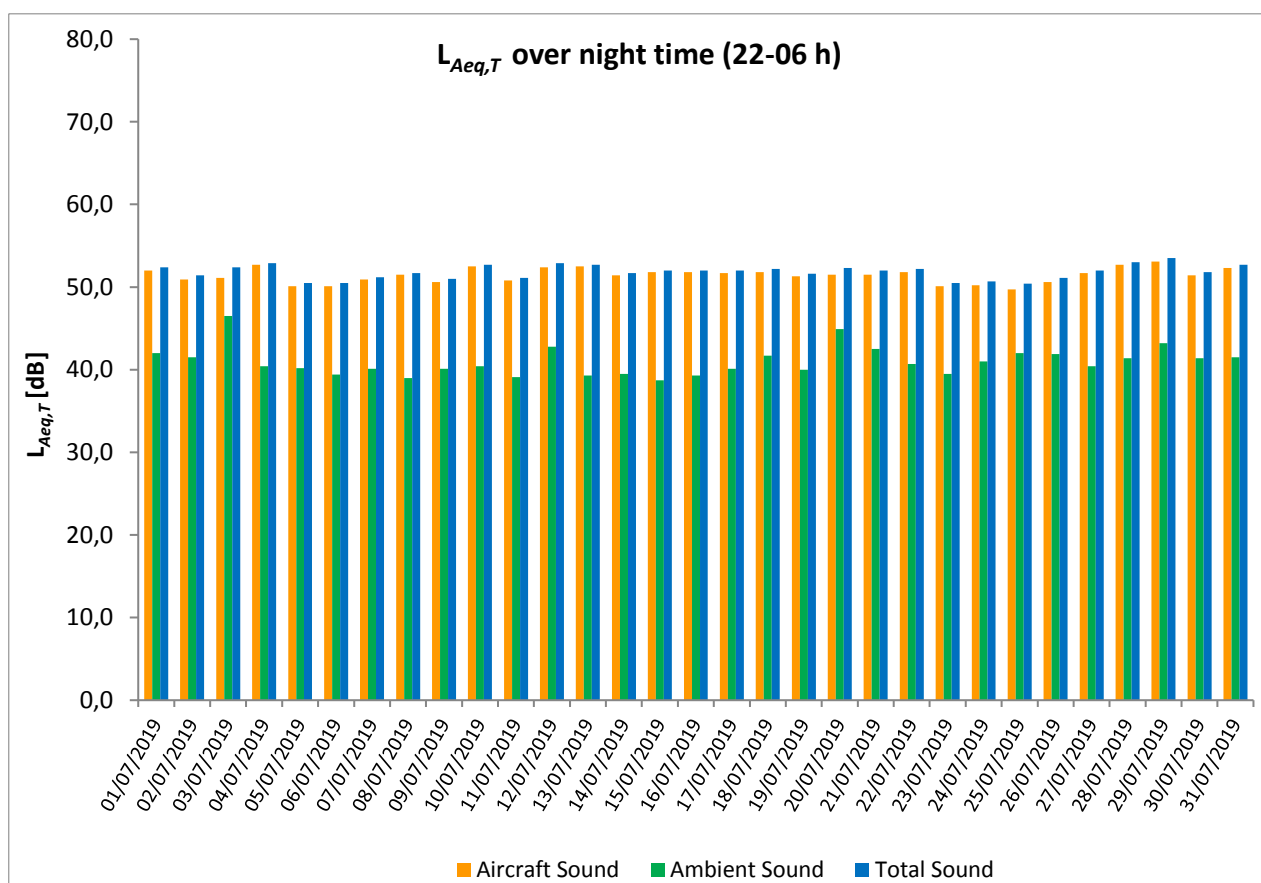
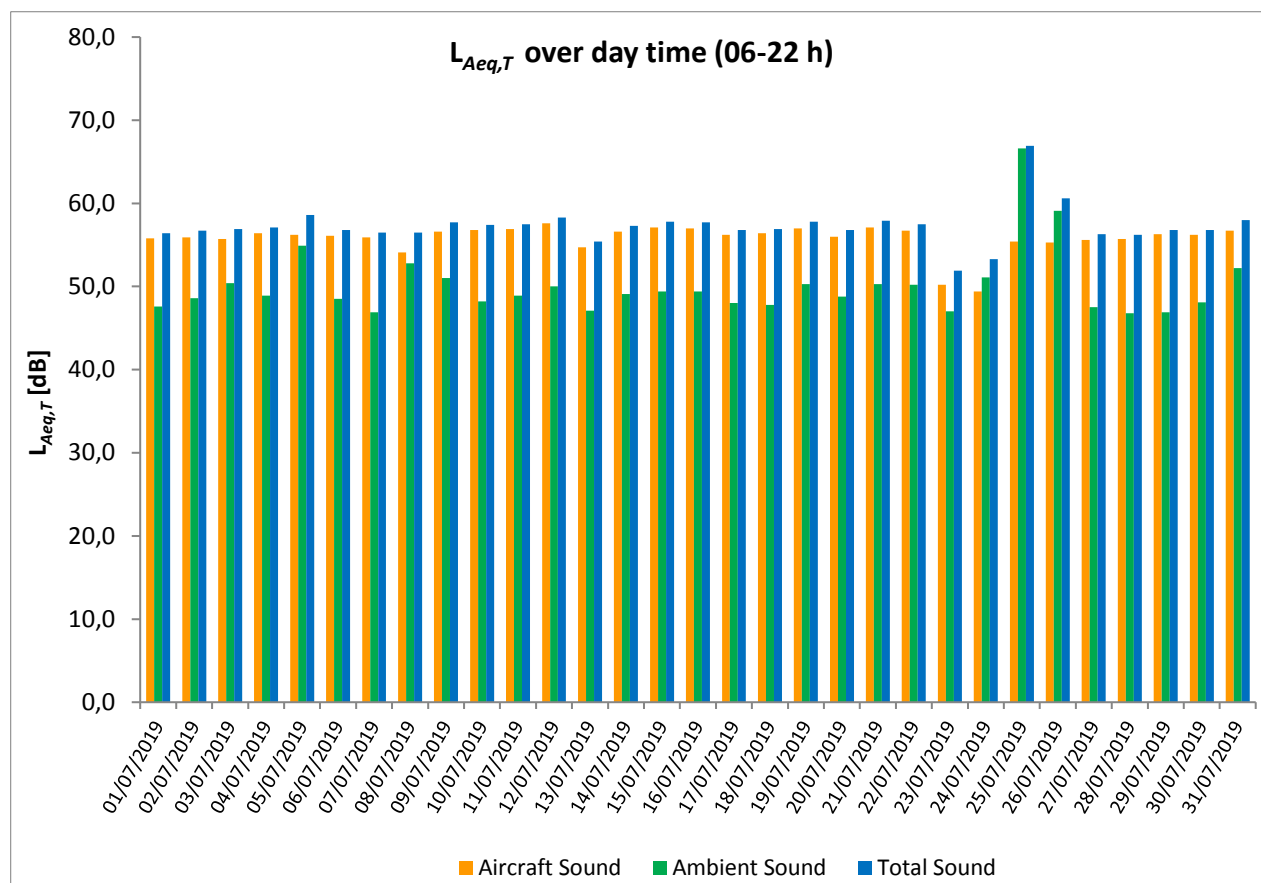
* Availability < 50%

** One or more events measured at wind speed above 5 m/s, not included into calculation

Equivalent Continuous Sound Pressure Level

MP13 Suchdol

July 2019



Equivalent Continuous Sound Pressure Level

MP14 Malé Kyšice

July 2019

	Total Sound [dB]		Aircraft Sound [dB]		Ambient Sound [dB]	
	L _{Aeq,T} DAY	L _{Aeq,T} NIGHT	L _{Aeq,T} DAY	L _{Aeq,T} NIGHT	L _{Aeq,T} DAY	L _{Aeq,T} NIGHT
01/07/2019	52.2	48.3	50.8	47.7	46.5	39.8
02/07/2019	53.6	51.0	52.8	50.6	45.7	39.9
03/07/2019	64.8	50.9	55.4	50.6	64.3	39.4
04/07/2019	55.3	50.7	54.7	50.4	46.1	39.1
05/07/2019	53.5	49.5	52.2	48.9	47.4	40.0
06/07/2019	52.7	49.3	51.6**	48.9	46.3	39.5
07/07/2019	52.6	49.9	51.1	49.3	47.1	40.3
08/07/2019	51.8	50.4	50.5	49.6	46.1	42.5
09/07/2019	53.9	49.7	53.1	49.3	46.0	39.5
10/07/2019	53.6	49.0	52.8	48.3	45.8	40.6
11/07/2019	56.3	50.8	52.7	50.4	53.8	40.7
12/07/2019	54.3	50.5	53.3	49.8	47.3	42.4
13/07/2019	53.1	50.3	51.1	49.9	48.6	39.1
14/07/2019	55.8	51.0	55.0	50.7	48.0	39.0
15/07/2019	55.2	53.0	54.0	52.8	48.8	39.7
16/07/2019	55.3	48.5	53.3	47.8	50.8	39.9
17/07/2019	55.3	50.2	53.8	49.8	49.9	39.3
18/07/2019	57.1	50.5	54.7	50.2	53.5	38.4
19/07/2019	55.1	48.7	53.0	48.1	50.9	40.1
20/07/2019	53.6	48.8	52.7	48.3	46.4	38.9
21/07/2019	56.3	50.1	51.8	49.7	54.3	39.4
22/07/2019	54.4	49.9	52.8	49.4	49.0	39.9
23/07/2019	57.2	50.4	50.5	50.1	56.2	39.0
24/07/2019	56.9	50.1	50.4	49.7	55.8	38.9
25/07/2019	59.5	51.1	54.4	50.8	57.8	39.1
26/07/2019	58.2	51.6	55.6	51.3	54.7	39.6
27/07/2019	60.0	51.1	55.3	50.8	58.2	39.7
28/07/2019	56.2	51.5	55.4	51.2	48.1	39.4
29/07/2019	58.0	51.0	53.6	50.6	56.0	40.2
30/07/2019	55.6	50.1	52.5	48.1	52.8	45.7
31/07/2019	55.9	48.6	53.0	48.1	52.9	39.2
Sum	56.7	50.3	53.3	49.9	54.0	40.2

* Availability < 50%

** One or more events measured at wind speed above 5 m/s, not included into calculation

Equivalent Continuous Sound Pressure Level

MP14 Malé Kyšice

July 2019

