

## Equivalent Continuous Sound Pressure Level

MP01 Jeneč

December 2024

	Total Sound [dB]		Aircraft Sound [dB]		Ambient Sound [dB]	
	L <sub>Aeq,T</sub> DAY	L <sub>Aeq,T</sub> NIGHT	L <sub>Aeq,T</sub> DAY	L <sub>Aeq,T</sub> NIGHT	L <sub>Aeq,T</sub> DAY	L <sub>Aeq,T</sub> NIGHT
01/12/2024	56.3	47.2	55.7	46.7	47.3	37.5
02/12/2024	58.9	50.0	58.2	49.6	50.4	39.9
03/12/2024	58.8	51.8	58.3	51.0	49.1	44.0
04/12/2024	58.9	53.2	58.4	52.7	49.2	43.3
05/12/2024	58.5	51.3	58.0	50.9	48.5	41.5
06/12/2024	60.7	51.9	60.3	51.4	50.3	42.3
07/12/2024	58.2	51.6	57.8	51.2	47.5	40.5
08/12/2024	55.8	51.1	55.1	50.6	47.7	41.0
09/12/2024	53.5	49.2	50.7	48.0	50.3	43.2
10/12/2024	57.5	48.7	56.5	47.2	50.9	43.2
11/12/2024	58.0	51.6	57.5	51.1	49.0	42.1
12/12/2024	57.4	51.7	56.6	51.0	49.3	43.0
13/12/2024	53.8	49.9	52.0	49.3	48.9	41.1
14/12/2024	58.3	49.8	57.8	49.5	47.9	38.7
15/12/2024	59.9	52.8	59.5	52.4	49.3	42.2
16/12/2024	60.1	53.2	59.6**	52.5	50.3	44.7
17/12/2024	58.6	52.1	58.0	51.7	49.5	41.9
18/12/2024	59.0	53.2	58.1	52.9	51.7	42.2
19/12/2024	59.4	50.4	59.0	49.5	48.5	43.2
20/12/2024	60.6	51.0	59.9	49.6	52.3	45.5
21/12/2024	58.6	49.8	58.2	49.2	47.6	40.8
22/12/2024	60.2	57.0	60.1	56.7	46.3	44.3
23/12/2024	59.7	54.6	59.5	54.5	47.7	40.7
24/12/2024	57.6	49.8	57.3	49.4	46.2	39.6
25/12/2024	57.0	47.8	56.6	47.2	47.0	39.0
26/12/2024	58.5	52.0	58.1	51.4	48.1	42.8
27/12/2024	56.5	51.7	55.8	50.7	48.3	44.8
28/12/2024	55.8	49.1	55.0	48.4	48.2	40.9
29/12/2024	58.7	52.6	58.3	52.3	47.3	41.0
30/12/2024	59.3	53.2	58.9	52.8	48.9	42.3
31/12/2024	59.7	55.9	57.3	50.2	56.0	54.6
Sum	58.4	51.8	57.8	51.0	49.5	44.1

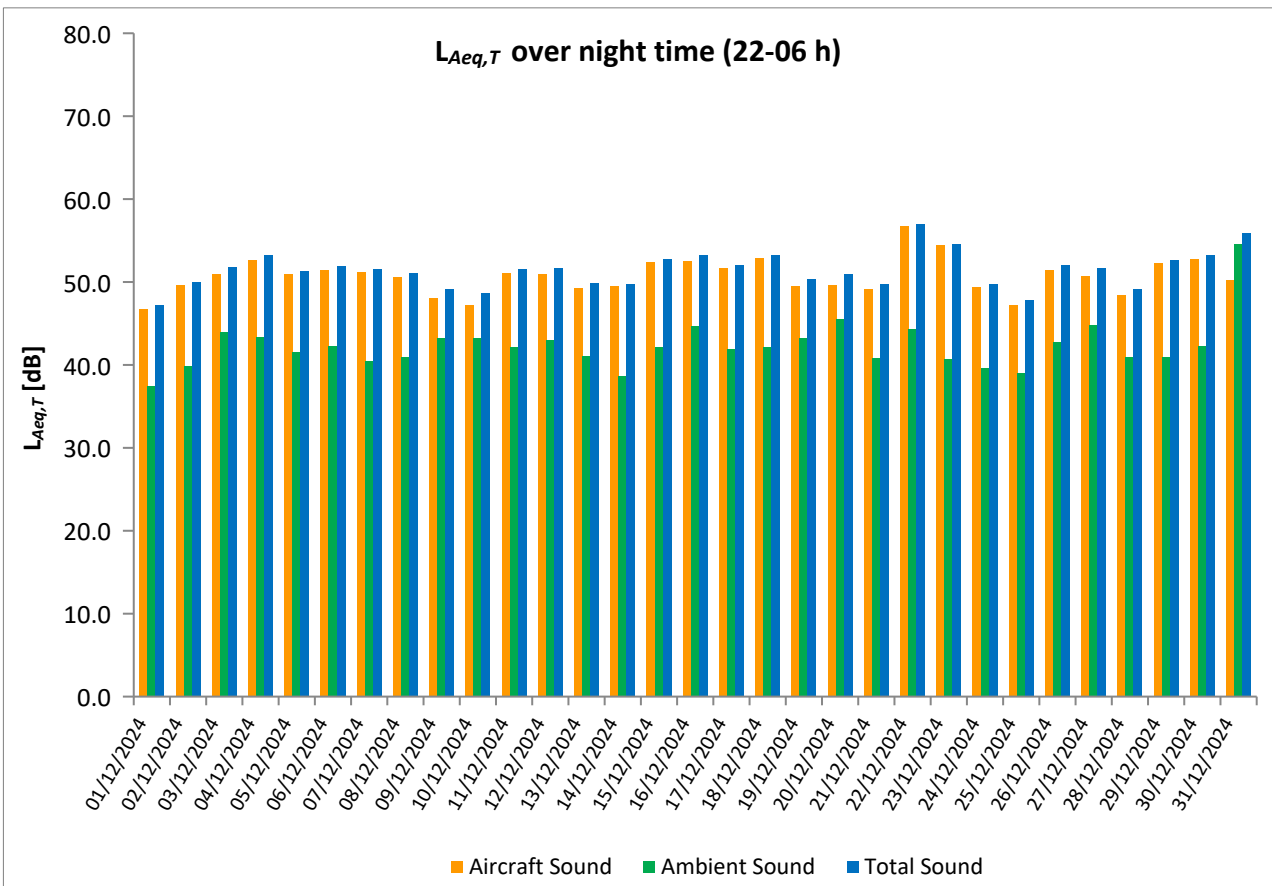
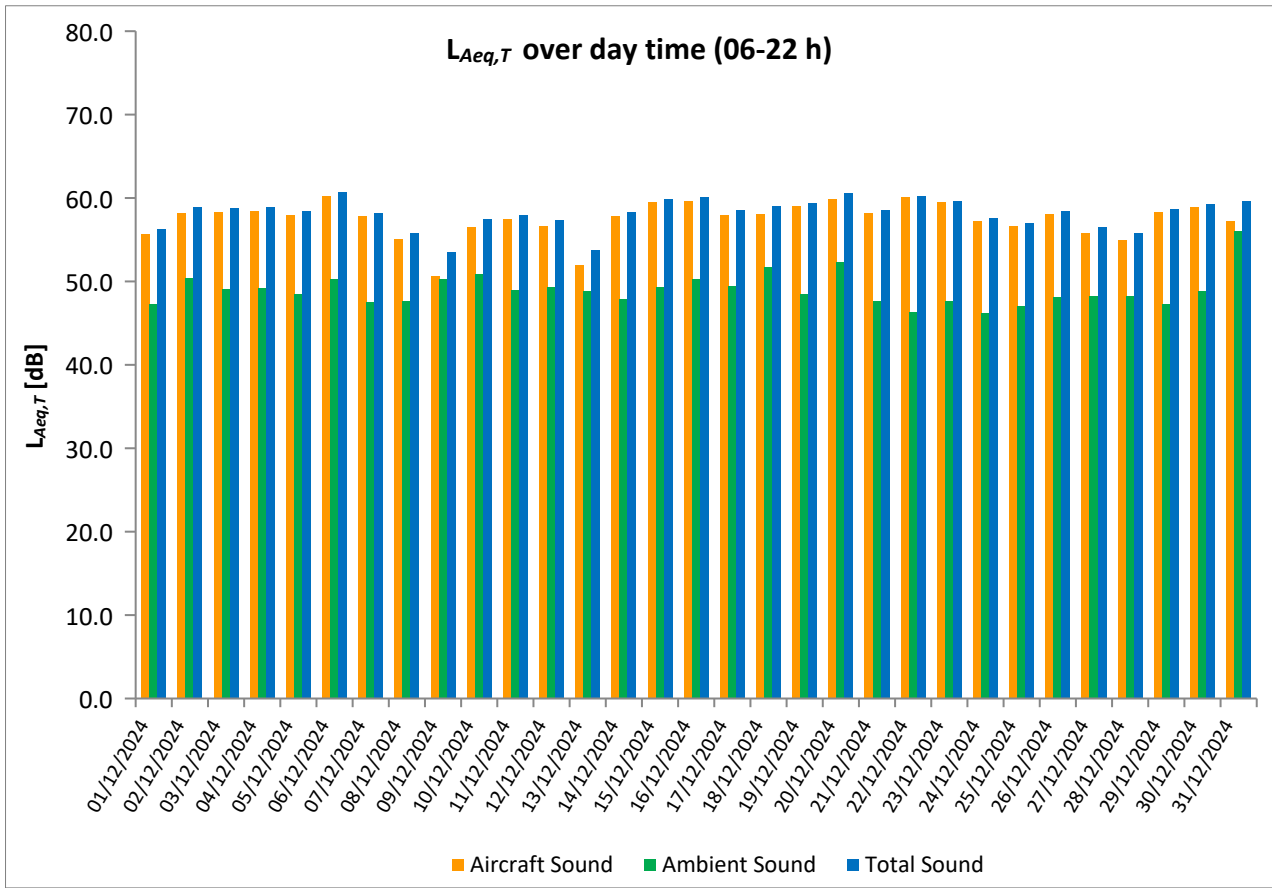
\* Availability < 50%

\*\* One or more events measured at wind speed above 5 m/s, not included into calculation

# Equivalent Continuous Sound Pressure Level

MP01 Jeneč

December 2024



# Equivalent Continuous Sound Pressure Level

## MP02 Červený Újezd

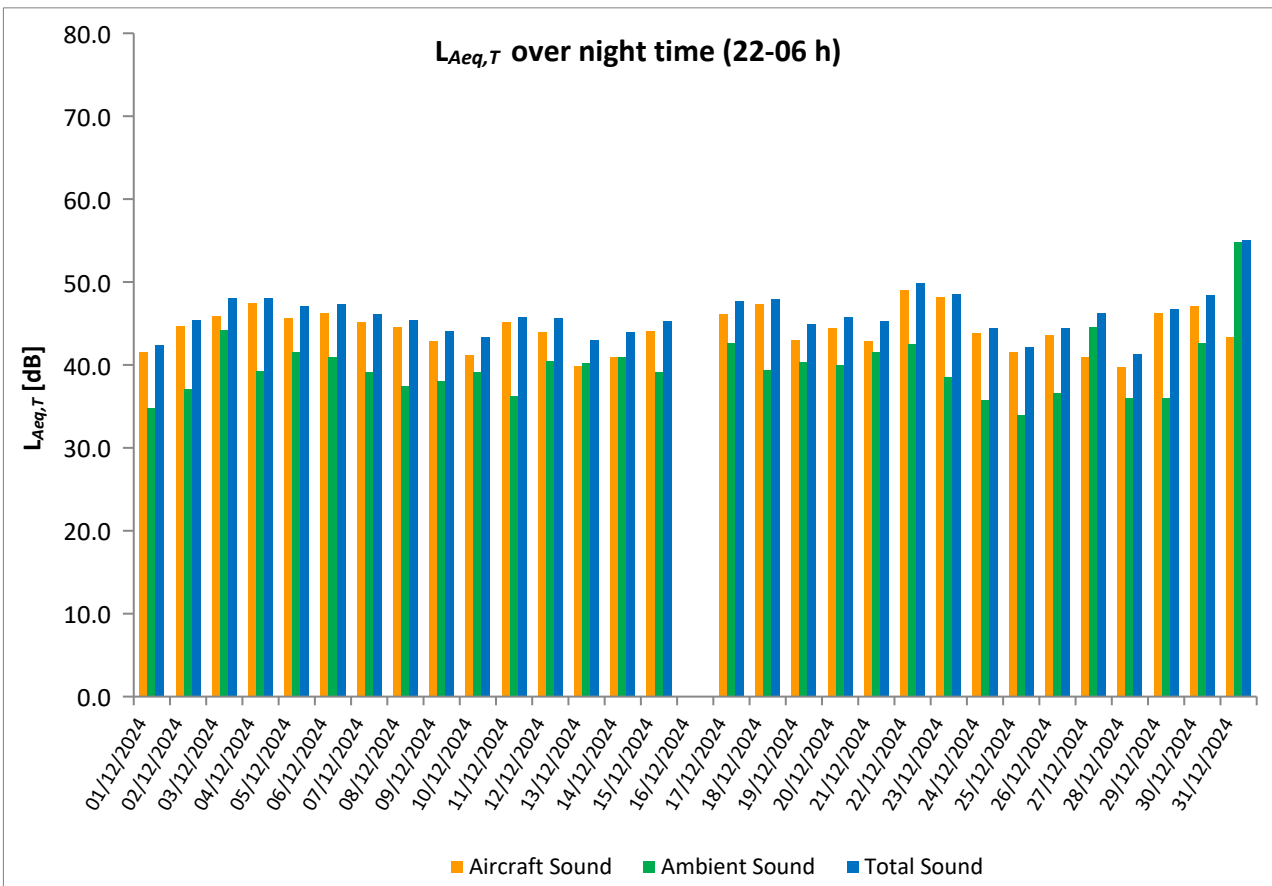
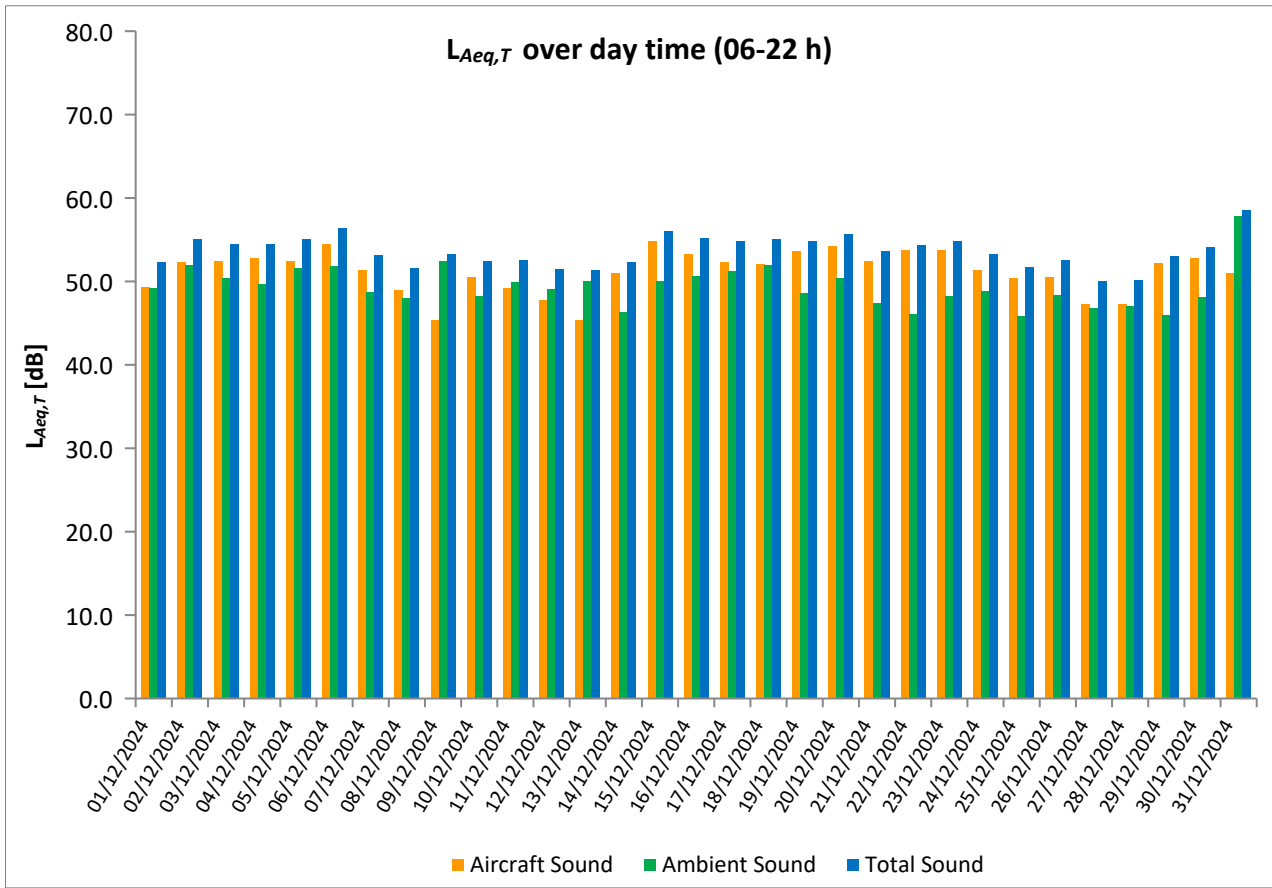
### December 2024

	Total Sound [dB]		Aircraft Sound [dB]		Ambient Sound [dB]	
	L <sub>Aeq,T</sub> DAY	L <sub>Aeq,T</sub> NIGHT	L <sub>Aeq,T</sub> DAY	L <sub>Aeq,T</sub> NIGHT	L <sub>Aeq,T</sub> DAY	L <sub>Aeq,T</sub> NIGHT
01/12/2024	52.3	42.4	49.3	41.6	49.2	34.8
02/12/2024	55.1	45.4	52.3	44.7	52.0	37.1
03/12/2024	54.5	48.1	52.4	45.9	50.4	44.2
04/12/2024	54.5	48.0	52.8	47.4	49.7	39.3
05/12/2024	55.1	47.1	52.5	45.7	51.6	41.6
06/12/2024	56.4	47.3	54.5	46.2	51.8	40.9
07/12/2024	53.2	46.1	51.4	45.2	48.7	39.1
08/12/2024	51.6	45.4	49.0	44.6	48.0	37.4
09/12/2024	53.3	44.1	45.4	42.9	52.5	38.1
10/12/2024	52.5	43.3	50.5	41.2	48.2	39.1
11/12/2024	52.6	45.8	49.2	45.2	49.9	36.2
12/12/2024	51.5	45.6	47.8	44.0	49.1	40.5
13/12/2024	51.4	43.0	45.4	39.8	50.1	40.2
14/12/2024	52.3	43.9	51.0	40.9	46.3	41.0
15/12/2024	56.0	45.3	54.8	44.1	50.1	39.1
16/12/2024	55.2	*	53.3	*	50.6	*
17/12/2024	54.8	47.7	52.3	46.1	51.2	42.6
18/12/2024	55.1	47.9	52.1	47.3	52.0	39.4
19/12/2024	54.8	44.9	53.7	43.0	48.6	40.3
20/12/2024	55.7	45.8	54.2	44.5	50.4	40.0
21/12/2024	53.7	45.3	52.5	42.9	47.4	41.5
22/12/2024	54.4	49.9	53.8	49.0	46.1	42.5
23/12/2024	54.9	48.6	53.8	48.2	48.2	38.5
24/12/2024	53.3	44.4	51.4	43.8	48.9	35.8
25/12/2024	51.7	42.2	50.4	41.5	45.9	34.0
26/12/2024	52.6	44.4	50.5	43.6	48.4	36.6
27/12/2024	50.1	46.2	47.3	41.0	46.8	44.6
28/12/2024	50.2	41.3	47.3	39.7	47.1	36.0
29/12/2024	53.1	46.7	52.2	46.3	46.0	36.0
30/12/2024	54.1	48.4	52.8	47.1	48.1	42.6
31/12/2024	58.6	55.1	51.0	43.4	57.8	54.8
Sum	54.1	47.1	51.7	44.9	50.3	43.1

\* Availability < 50%

\*\* One or more events measured at wind speed above 5 m/s, not included into calculation

Equivalent Continuous Sound Pressure Level  
 MP02 Červený Újezd  
 December 2024



## Equivalent Continuous Sound Pressure Level

### MP03 Unhošť

### December 2024

	Total Sound [dB]		Aircraft Sound [dB]		Ambient Sound [dB]	
	L <sub>Aeq,T</sub> DAY	L <sub>Aeq,T</sub> NIGHT	L <sub>Aeq,T</sub> DAY	L <sub>Aeq,T</sub> NIGHT	L <sub>Aeq,T</sub> DAY	L <sub>Aeq,T</sub> NIGHT
01/12/2024	51.4	44.5	50.9	44.2	41.0	32.8
02/12/2024	54.0	46.0	53.5	45.6	44.0	35.5
03/12/2024	53.8	50.1	53.0	46.8	46.2	47.4
04/12/2024	55.4	48.3	53.3	48.0	51.3	36.7
05/12/2024	53.9	46.9	53.3	46.6	44.6	35.7
06/12/2024	55.5	47.9	54.3	47.1	49.5	40.1
07/12/2024	52.8	47.7	52.2	45.9	44.0	42.9
08/12/2024	52.1	47.7	51.4	47.2	44.3	37.6
09/12/2024	51.8	47.9	50.5	47.0	45.9	40.4
10/12/2024	53.0	44.9	52.2	43.7	45.1	38.7
11/12/2024	52.0	47.6	50.6	47.0	46.3	38.7
12/12/2024	50.3	46.9	49.4	46.5	43.1	36.7
13/12/2024	50.6	42.4	49.2	41.7	44.9	34.6
14/12/2024	51.8	43.2	51.2	42.4	43.4	35.4
15/12/2024	55.3	46.8	54.7**	45.3	46.5	41.7
16/12/2024	54.2	48.9	53.4**	47.1	46.7	44.1
17/12/2024	53.3	47.5	52.8	47.1	43.7	37.3
18/12/2024	52.9	48.4	51.9	48.0	46.0	37.1
19/12/2024	54.7	44.9	53.9**	44.0	46.7	37.8
20/12/2024	55.8	46.9	54.5	45.8	49.9	40.3
21/12/2024	53.8	45.4	53.2	44.4	45.3	38.7
22/12/2024	54.7	50.3	54.1	49.4	46.0	42.7
23/12/2024	54.9	48.8	54.5	48.5	44.5	37.7
24/12/2024	52.6	45.9	51.8	45.0	44.4	38.7
25/12/2024	52.7	43.6	51.4	43.2	47.0	33.8
26/12/2024	52.3	46.4	51.5	45.8	44.6	37.6
27/12/2024	51.0	43.7	49.3	42.7	46.1	36.7
28/12/2024	50.2	42.8	48.9	41.8	44.5	36.1
29/12/2024	53.7	47.6	53.0	47.3	45.4	36.2
30/12/2024	54.0	48.4	53.5	48.1	44.3	36.4
31/12/2024	55.4	59.3	51.4	44.2	53.2	59.2
Sum	53.5	48.8	52.5	46.1	46.6	45.6

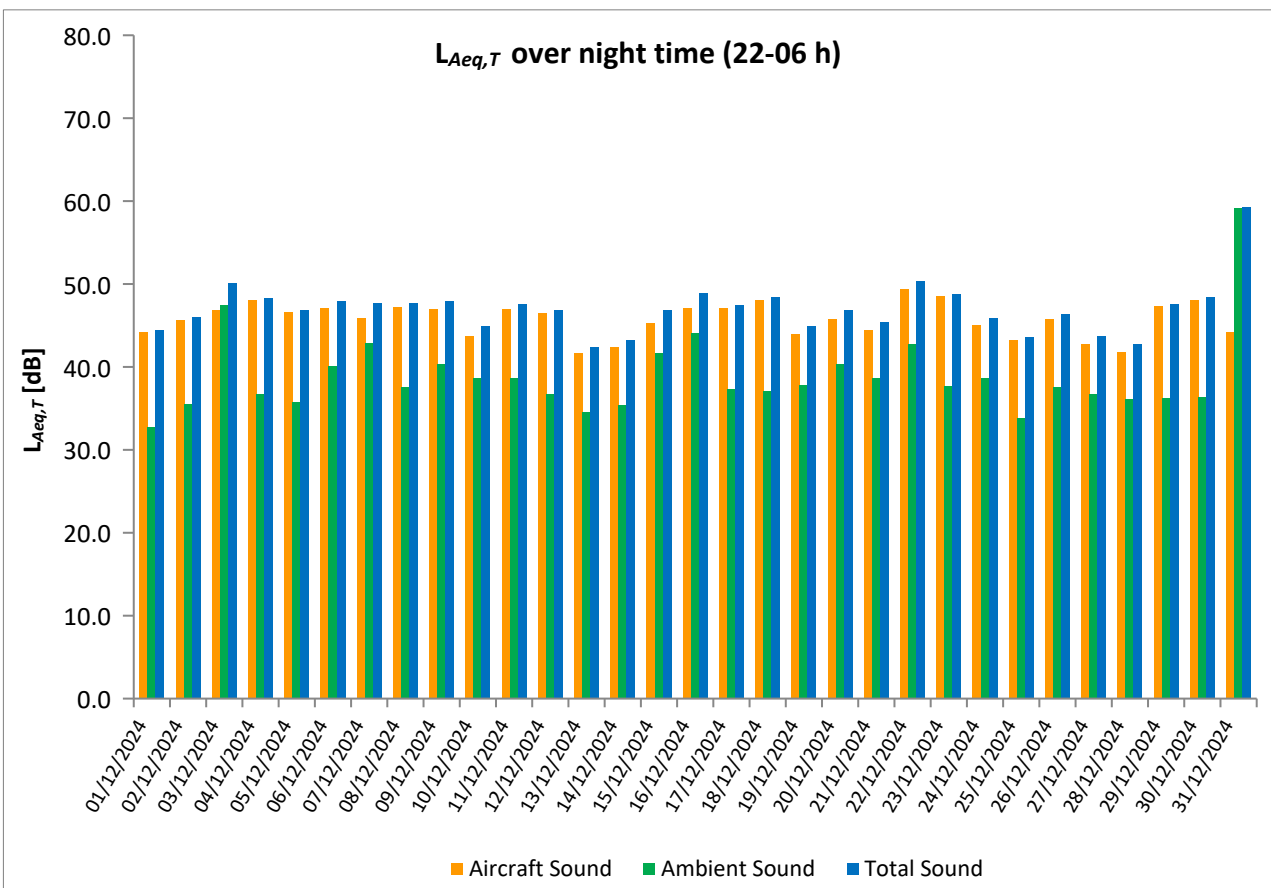
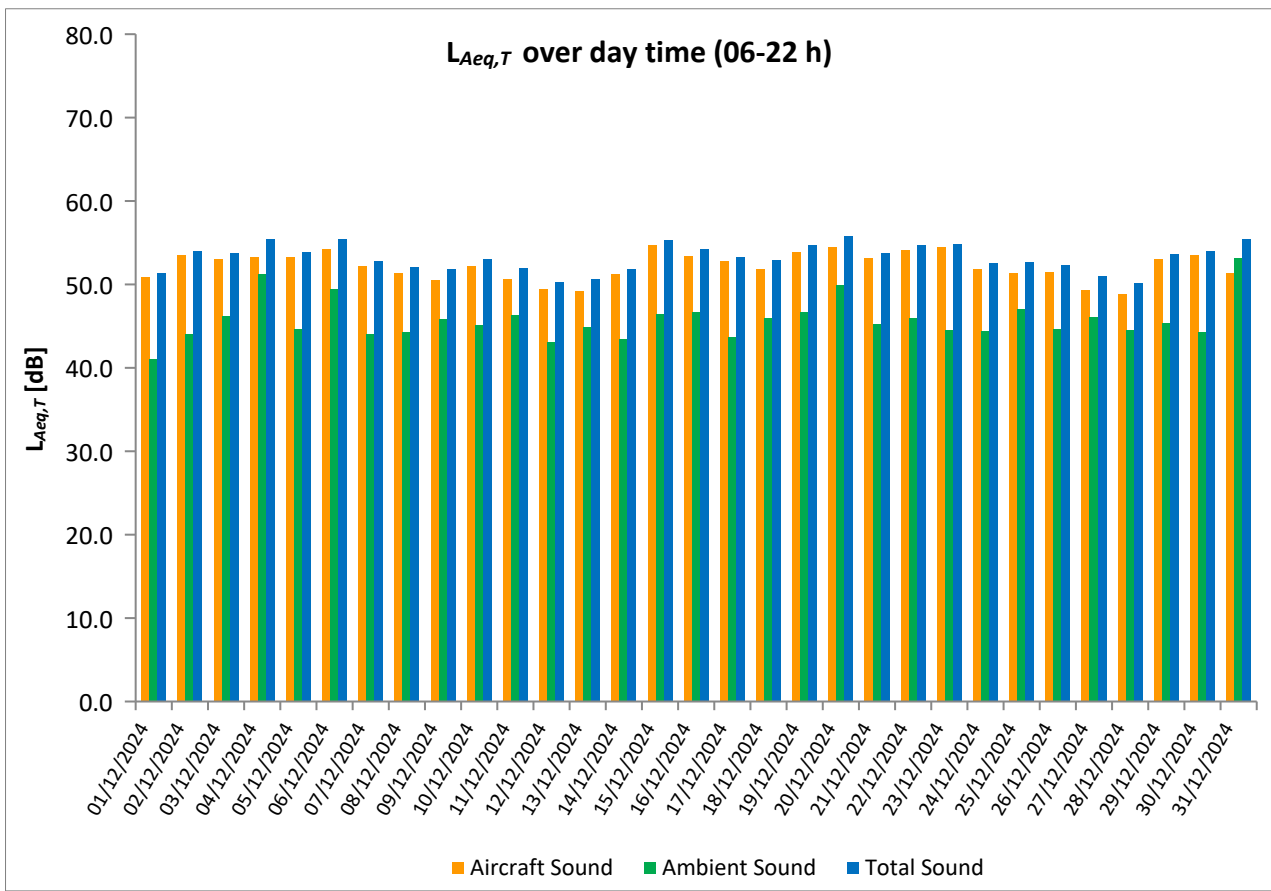
\* Availability < 50%

\*\* One or more events measured at wind speed above 5 m/s, not included into calculation

# Equivalent Continuous Sound Pressure Level

## MP03 Unhošť

December 2024



# Equivalent Continuous Sound Pressure Level

## MP04 Pavlov

### December 2024



	Total Sound [dB]		Aircraft Sound [dB]		Ambient Sound [dB]	
	L <sub>Aeq,T</sub> DAY	L <sub>Aeq,T</sub> NIGHT	L <sub>Aeq,T</sub> DAY	L <sub>Aeq,T</sub> NIGHT	L <sub>Aeq,T</sub> DAY	L <sub>Aeq,T</sub> NIGHT
01/12/2024	52.8	46.4	52.0	45.2	45.3	40.3
02/12/2024	55.2	47.7	54.3	46.6	48.3	41.3
03/12/2024	55.5	49.3	54.3	47.8	49.5	43.8
04/12/2024	56.1	50.9	54.5	49.1	51.1	46.1
05/12/2024	55.6	49.1	54.7	47.9	48.2	42.9
06/12/2024	56.8	49.9	55.6	49.1	50.4	42.4
07/12/2024	54.4	48.1	53.6	47.2	46.7	41.0
08/12/2024	53.5	48.2	50.9	47.3	49.9	41.2
09/12/2024	54.0	49.0	48.3	45.8	52.7	46.3
10/12/2024	55.0	47.6	52.4	43.8	51.6	45.3
11/12/2024	53.6	49.6	51.7	47.5	49.1	45.4
12/12/2024	52.6	48.4	50.3	46.9	48.8	43.2
13/12/2024	51.2	47.4	47.7	44.7	48.6	44.1
14/12/2024	53.9	46.2	52.7	45.1	47.5	39.8
15/12/2024	57.3	51.5	56.3	48.9	50.8	48.0
16/12/2024	56.6	53.2	54.9	47.7	51.7	51.7
17/12/2024	55.4	49.9	53.9	48.6	50.2	44.1
18/12/2024	55.0	50.6	53.4	49.3	49.8	44.8
19/12/2024	56.3	47.9	55.3	45.2	49.6	44.6
20/12/2024	56.8	49.8	55.7	47.8	50.3	45.5
21/12/2024	55.8	47.7	54.3	46.0	50.5	42.8
22/12/2024	56.4	53.6	55.8	50.4	47.7	50.8
23/12/2024	56.1	50.8	55.4	50.1	48.3	42.4
24/12/2024	55.4	47.2	53.3	46.1	51.3	40.8
25/12/2024	55.2	45.9	52.7	44.7	51.5	39.6
26/12/2024	57.2	48.4	53.4	47.1	54.8	42.7
27/12/2024	52.3	46.7	49.9	44.7	48.5	42.4
28/12/2024	52.0	44.6	49.3	42.5	48.6	40.5
29/12/2024	55.4	49.2	53.9	48.4	50.1	41.4
30/12/2024	56.1	50.3	54.7	49.4	50.3	42.7
31/12/2024	55.8	70.1	52.8	46.1	52.9	70.1
Sum	55.3	56.2	53.6	47.4	50.2	55.6

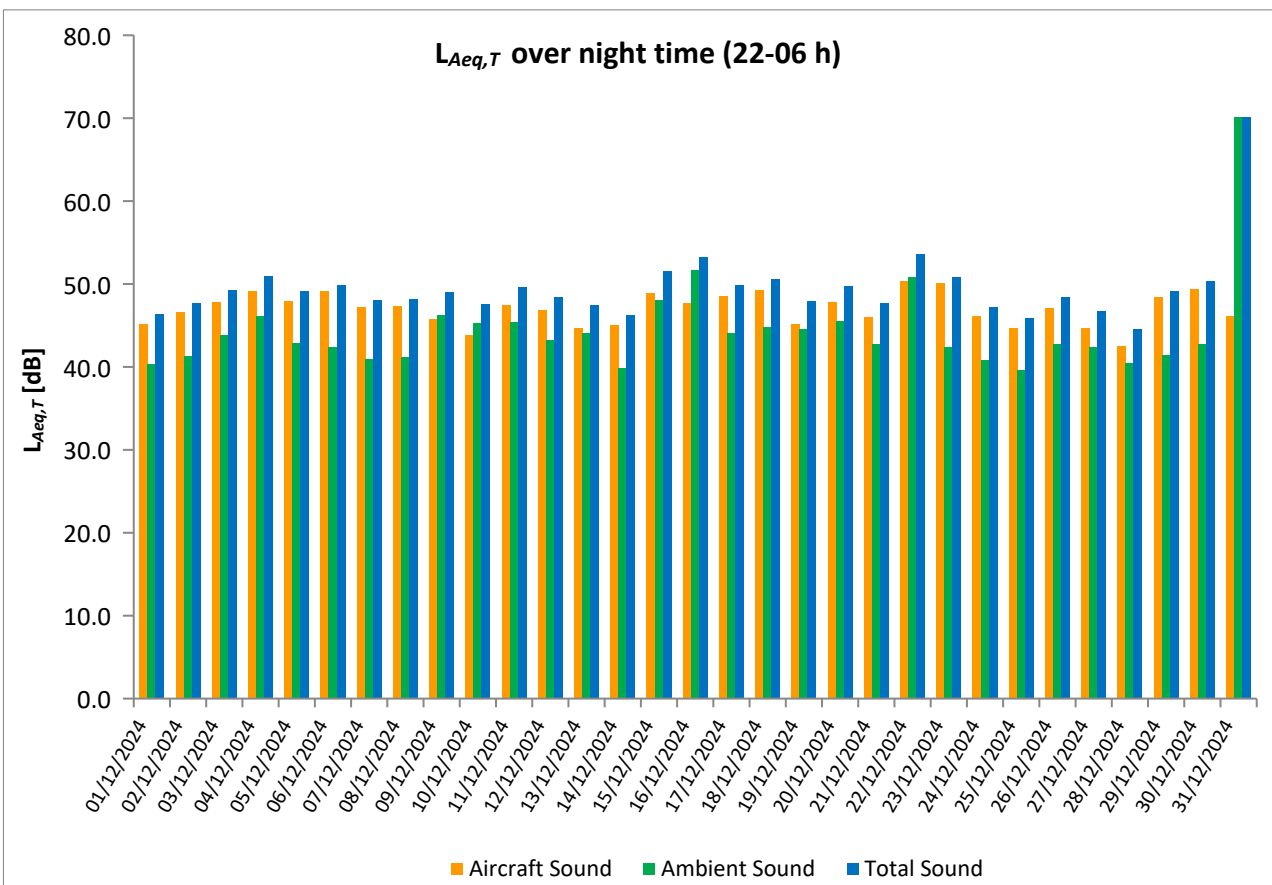
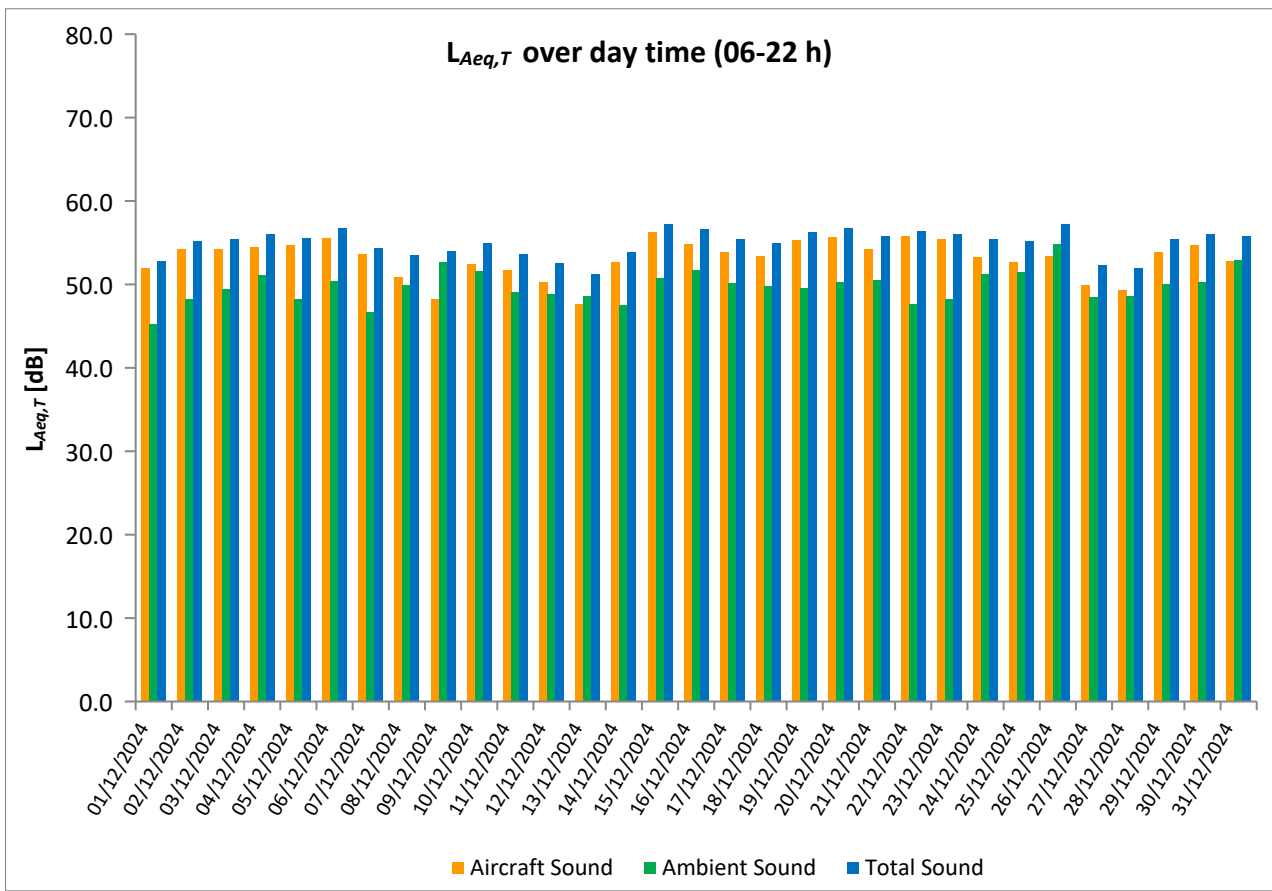
\* Availability < 50%

\*\* One or more events measured at wind speed above 5 m/s, not included into calculation

# Equivalent Continuous Sound Pressure Level

## MP04 Pavlov

December 2024





## Equivalent Continuous Sound Pressure Level

### MP05 Hostivice

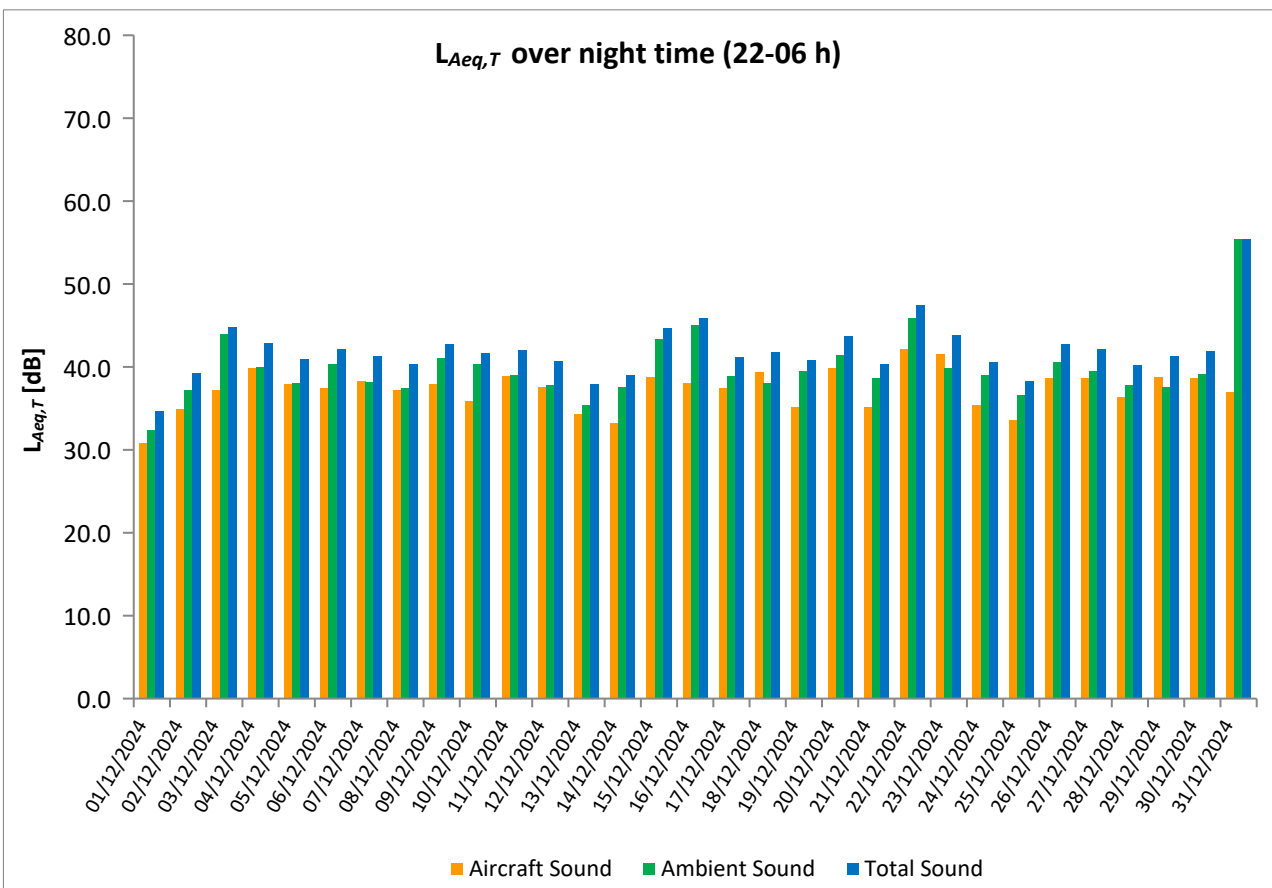
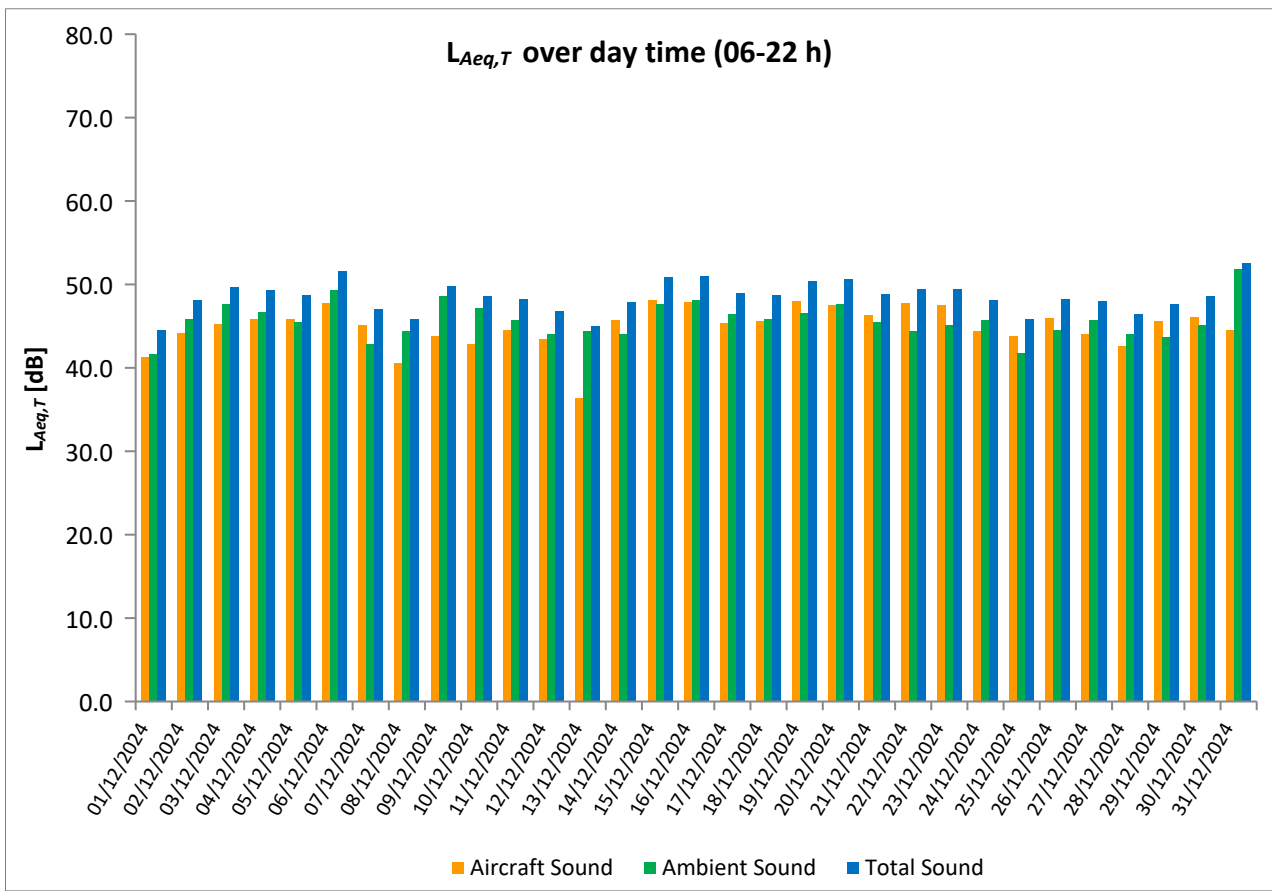
### December 2024

	Total Sound [dB]		Aircraft Sound [dB]		Ambient Sound [dB]	
	L <sub>Aeq,T</sub> DAY	L <sub>Aeq,T</sub> NIGHT	L <sub>Aeq,T</sub> DAY	L <sub>Aeq,T</sub> NIGHT	L <sub>Aeq,T</sub> DAY	L <sub>Aeq,T</sub> NIGHT
01/12/2024	44.5	34.7	41.3	30.8	41.7	32.4
02/12/2024	48.1	39.2	44.2	34.9	45.8	37.2
03/12/2024	49.7	44.8	45.3	37.2	47.7	43.9
04/12/2024	49.3	42.9	45.8	39.8	46.7	40.0
05/12/2024	48.7	41.0	45.9	37.9	45.5	38.1
06/12/2024	51.6	42.2	47.8	37.4	49.3	40.4
07/12/2024	47.1	41.3	45.1	38.3	42.8	38.2
08/12/2024	45.9	40.3	40.6	37.2	44.4	37.4
09/12/2024	49.8	42.8	43.8	37.9	48.6	41.1
10/12/2024	48.6	41.7	42.9	35.9	47.2	40.4
11/12/2024	48.2	42.0	44.5	38.9	45.7	39.0
12/12/2024	46.8	40.7	43.4	37.6	44.1	37.8
13/12/2024	45.0	37.9	36.4	34.3	44.4	35.4
14/12/2024	47.9	39.0	45.7	33.2	44.0	37.6
15/12/2024	50.9	44.7	48.1	38.8	47.7	43.4
16/12/2024	51.0	45.9	47.9	38.1	48.1	45.1
17/12/2024	49.0	41.2	45.4	37.5	46.4	38.9
18/12/2024	48.7	41.8	45.6	39.4	45.8	38.1
19/12/2024	50.4	40.8	48.0	35.2	46.6	39.5
20/12/2024	50.6	43.7	47.5	39.8	47.6	41.4
21/12/2024	48.9	40.3	46.3	35.2	45.5	38.7
22/12/2024	49.4	47.5	47.8	42.2	44.4	45.9
23/12/2024	49.5	43.8	47.5	41.6	45.1	39.9
24/12/2024	48.1	40.6	44.4	35.4	45.7	39.0
25/12/2024	45.9	38.3	43.8	33.6	41.8	36.6
26/12/2024	48.3	42.7	46.0	38.6	44.5	40.6
27/12/2024	48.0	42.1	44.1	38.6	45.7	39.5
28/12/2024	46.4	40.2	42.6	36.4	44.1	37.8
29/12/2024	47.7	41.3	45.6	38.8	43.7	37.6
30/12/2024	48.6	41.9	46.1	38.7	45.1	39.1
31/12/2024	52.6	55.4	44.5	37.0	51.9	55.4
Sum	48.9	44.4	45.5	37.9	46.3	43.3

\* Availability < 50%

\*\* One or more events measured at wind speed above 5 m/s, not included into calculation

Equivalent Continuous Sound Pressure Level  
 MP05 Hostivice  
 December 2024



# Equivalent Continuous Sound Pressure Level

## MP06 Dobrovíz

### December 2024

	Total Sound [dB]		Aircraft Sound [dB]		Ambient Sound [dB]	
	L <sub>Aeq,T</sub> DAY	L <sub>Aeq,T</sub> NIGHT	L <sub>Aeq,T</sub> DAY	L <sub>Aeq,T</sub> NIGHT	L <sub>Aeq,T</sub> DAY	L <sub>Aeq,T</sub> NIGHT
01/12/2024	54.2	44.3	52.1	42.6	50.0	39.4
02/12/2024	55.1	48.0	53.5	45.9	50.0	44.0
03/12/2024	54.4	47.8	53.2	45.2	48.3	44.3
04/12/2024	61.1	47.2	53.4	46.3	60.3	40.0
05/12/2024	54.7	47.4	53.8	46.1	47.4	41.5
06/12/2024	56.8	46.7	55.9	44.3	49.1	43.1
07/12/2024	54.4	47.7	53.5	45.5	47.6	43.7
08/12/2024	54.0	47.1	52.9	44.6	47.6	43.4
09/12/2024	50.2	43.8	47.7	41.3	46.7	40.3
10/12/2024	54.9	44.3	53.4	41.9	49.6	40.4
11/12/2024	52.9	46.4	52.0	45.5	46.0	39.5
12/12/2024	53.9	47.0	52.7	46.0	47.5	40.1
13/12/2024	54.9	46.5	53.1	44.3	50.1	42.4
14/12/2024	60.8	45.5	53.2	44.1	59.9	39.9
15/12/2024	55.8	45.9	55.3	44.4	46.4	40.6
16/12/2024	55.8	48.7	55.1	47.0	47.6	43.6
17/12/2024	54.2	47.6	52.7	44.8	49.0	44.3
18/12/2024	54.4	48.3	53.3	47.1	48.2	42.4
19/12/2024	56.0	52.4	55.2	51.9	48.4	42.0
20/12/2024	55.1	46.4	54.4	44.2	47.1	42.3
21/12/2024	55.0	44.6	53.9	40.6	48.4	42.4
22/12/2024	55.8	*	55.3	*	46.2	*
23/12/2024	55.5	48.5	54.7	47.6	47.4	41.1
24/12/2024	51.5	43.6	51.1	41.5	41.7	39.5
25/12/2024	52.2	43.5	51.7	39.9	42.8	41.1
26/12/2024	56.1	51.4	54.9	48.4	50.0	48.5
27/12/2024	54.9	50.7	53.2	49.2	50.0	45.4
28/12/2024	53.4	46.8	52.0	44.7	47.9	42.7
29/12/2024	54.0	47.4	53.5	46.4	44.4	40.7
30/12/2024	54.8	48.6	54.2	47.9	45.3	40.7
31/12/2024	54.1	48.1	52.2	44.9	49.7	45.3
Sum	55.5	47.7	53.5	46.1	51.1	42.8

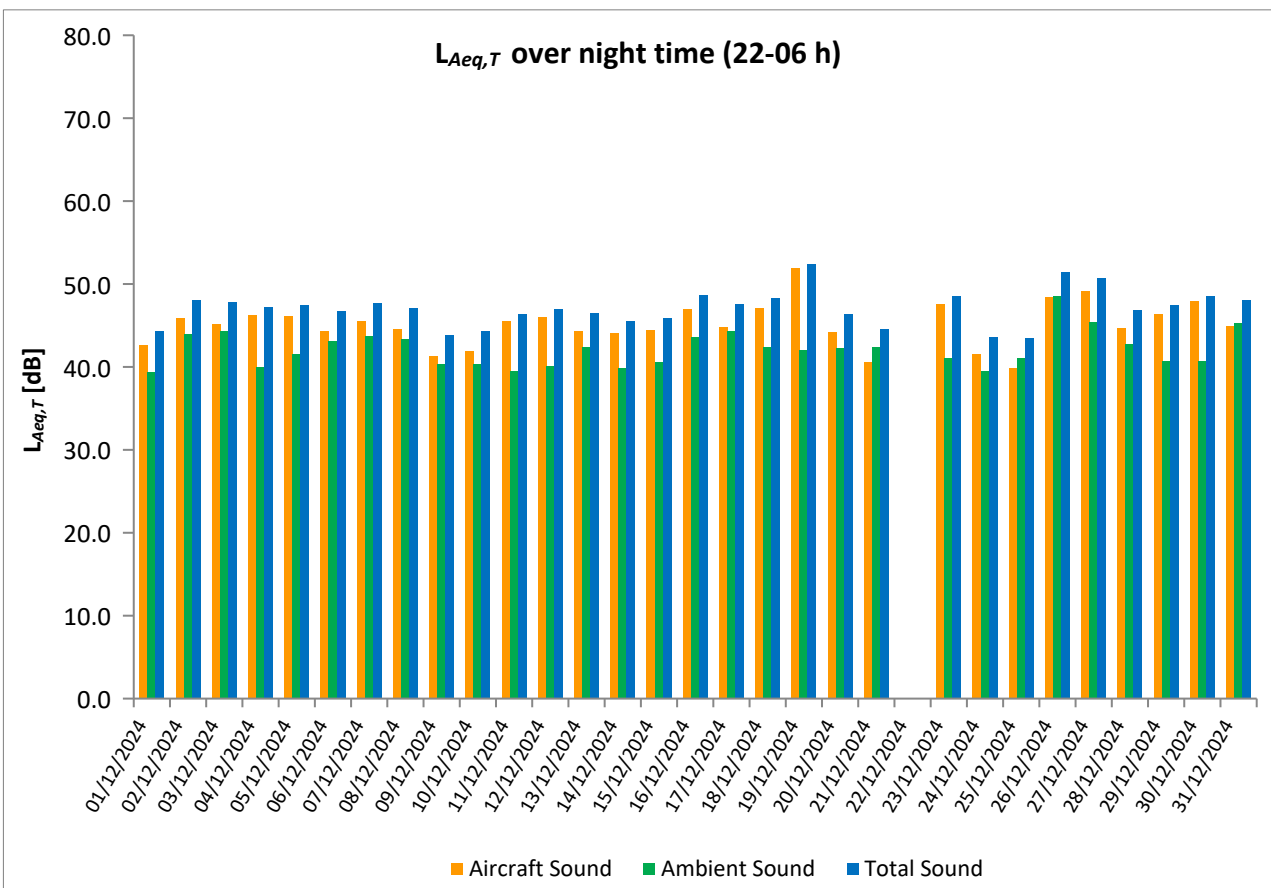
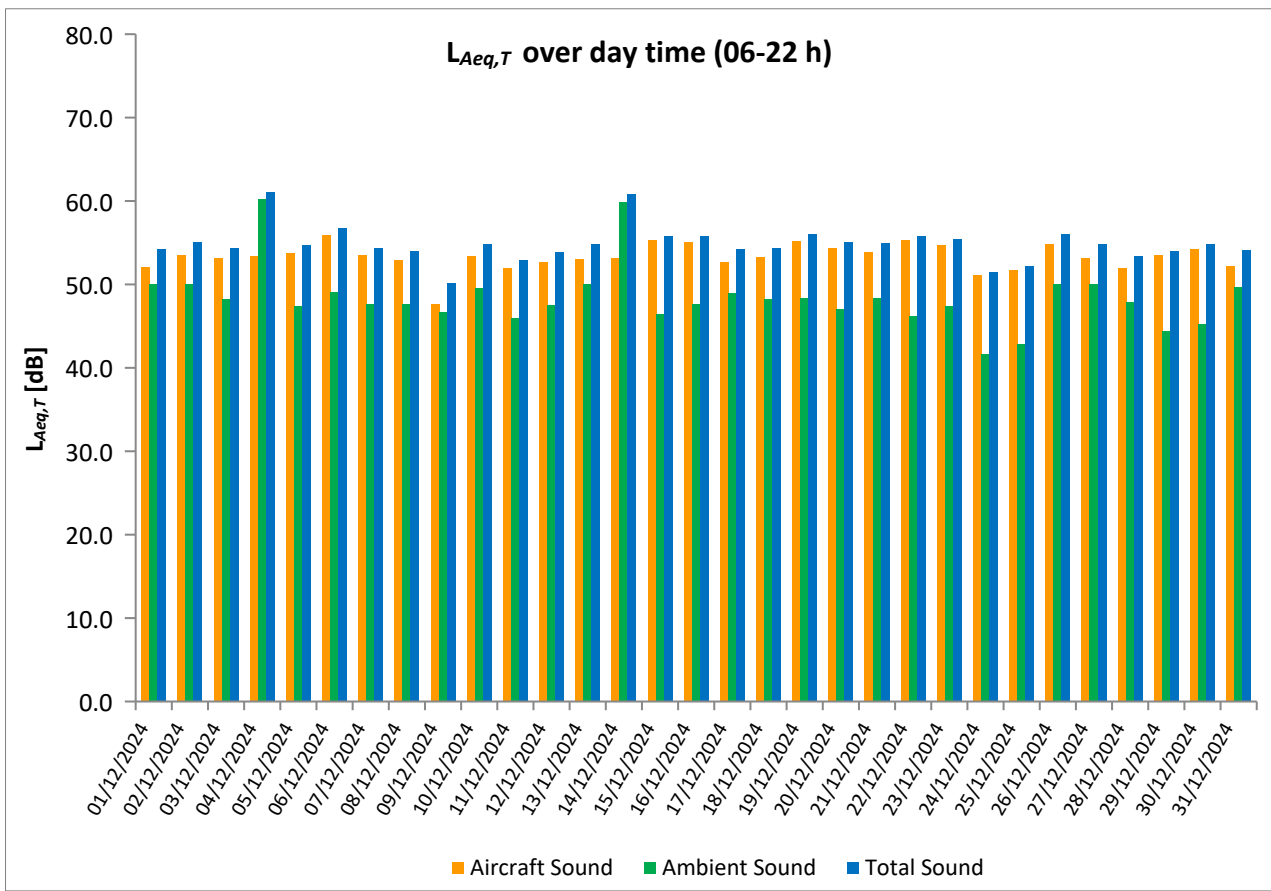
\* Availability < 50%

\*\* One or more events measured at wind speed above 5 m/s, not included into calculation

# Equivalent Continuous Sound Pressure Level

## MP06 Dobrovíz

December 2024



# Equivalent Continuous Sound Pressure Level

## MP07 Kněževés

### December 2024



	Total Sound [dB]		Aircraft Sound [dB]		Ambient Sound [dB]	
	L <sub>Aeq,T</sub> DAY	L <sub>Aeq,T</sub> NIGHT	L <sub>Aeq,T</sub> DAY	L <sub>Aeq,T</sub> NIGHT	L <sub>Aeq,T</sub> DAY	L <sub>Aeq,T</sub> NIGHT
01/12/2024	57.9	49.9	56.5	47.0	52.2	46.7
02/12/2024	58.0	48.0	56.7	44.6	52.2	45.5
03/12/2024	57.2	51.8	55.2	49.4	52.8	48.1
04/12/2024	56.5	50.0	55.2	48.7	50.6	44.3
05/12/2024	57.5	52.2	55.9	50.1	52.5	48.1
06/12/2024	*	52.1	*	49.0	*	49.2
07/12/2024	56.7	50.8	55.6	48.3	50.2	47.2
08/12/2024	57.1	50.8	56.1	49.0	50.0	45.9
09/12/2024	56.0	49.0	55.1	47.7	48.3	43.1
10/12/2024	50.9	44.4	47.4	40.7	48.3	41.9
11/12/2024	49.1	47.3	45.0	45.9	46.9	41.6
12/12/2024	52.8	47.8	51.5	45.7	47.1	43.8
13/12/2024	58.3	50.5	56.9	47.3	52.7	47.6
14/12/2024	56.7	49.5	54.9	45.8	52.1	47.0
15/12/2024	*	*	*	*	*	*
16/12/2024	*	*	*	*	*	*
17/12/2024	55.8	51.9	54.6	49.2	49.8	48.6
18/12/2024	57.1	52.0	55.9	51.0	50.9	45.3
19/12/2024	59.4	49.5	58.6	47.7	51.3	44.9
20/12/2024	54.7	48.6	53.7**	46.0	47.9	45.2
21/12/2024	*	48.4	*	47.1	*	42.5
22/12/2024	57.3	*	56.5	*	49.6	*
23/12/2024	56.0	51.6	54.9	49.3	49.6	47.7
24/12/2024	53.1	45.4	50.9	43.8	49.1	40.4
25/12/2024	53.4	46.0	52.3	42.7	47.0	43.3
26/12/2024	62.6	59.6	60.4	57.5	58.5	55.5
27/12/2024	57.4	55.3	56.0	53.0	51.9	51.5
28/12/2024	56.9	52.4	54.6	47.2	53.0	50.8
29/12/2024	57.6	54.2	56.2	50.5	52.2	51.7
30/12/2024	56.5	55.0	55.4	51.2	49.8	52.7
31/12/2024	60.5	58.6	56.7	47.8	58.1	58.2
Sum	57.3	52.5	55.6	49.5	52.2	49.6

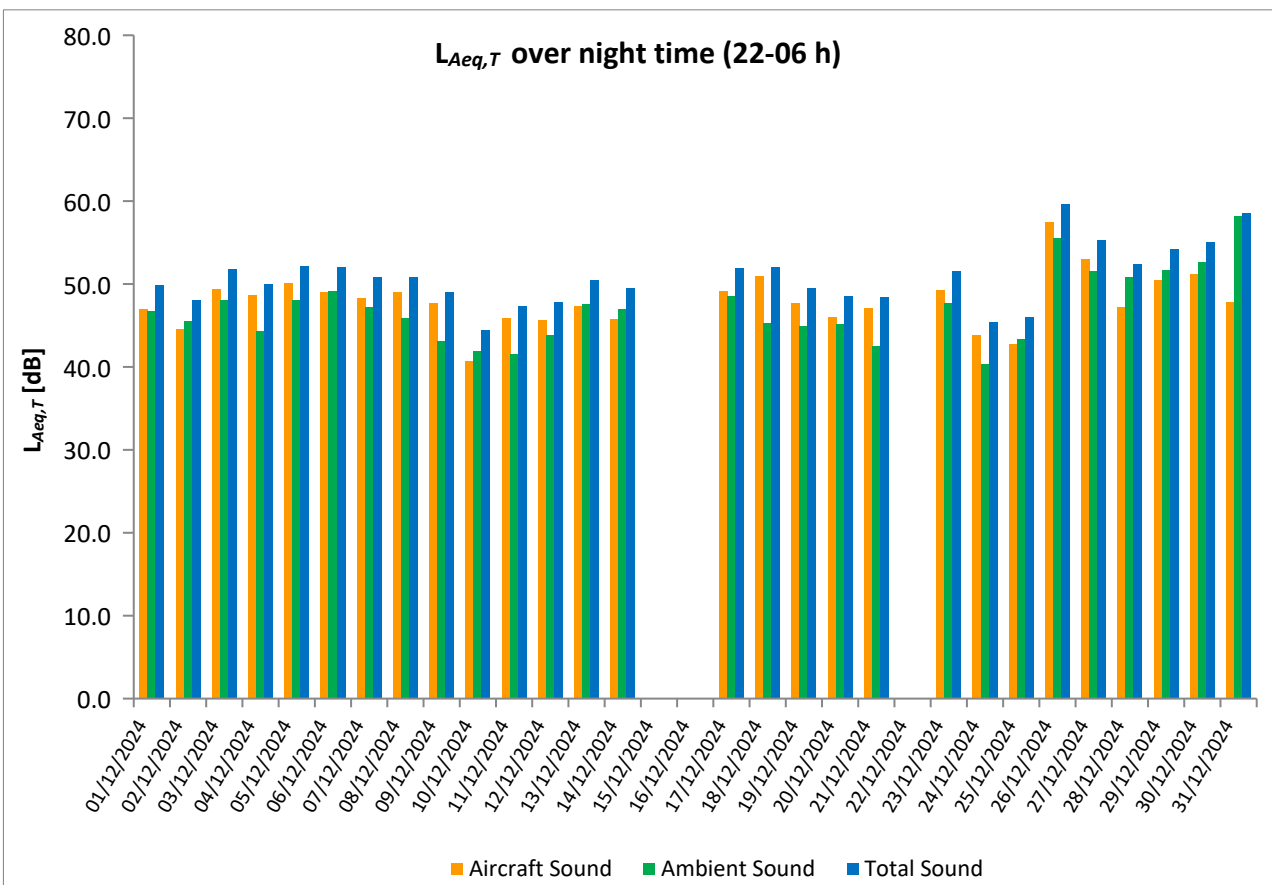
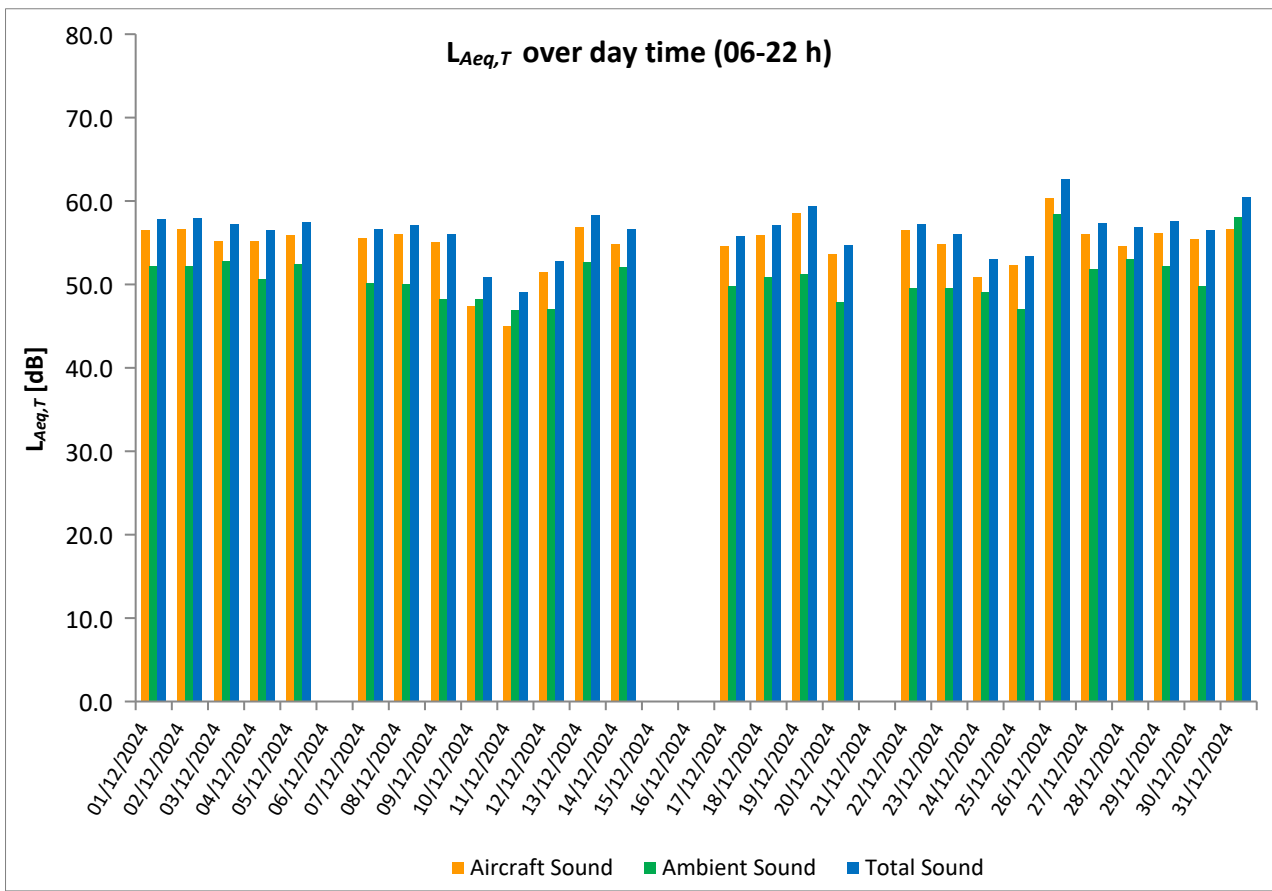
\* Availability < 50%

\*\* One or more events measured at wind speed above 5 m/s, not included into calculation

# Equivalent Continuous Sound Pressure Level

## MP07 Kněževs

December 2024



# Equivalent Continuous Sound Pressure Level

## MP08 Horoměřice střed

### December 2024

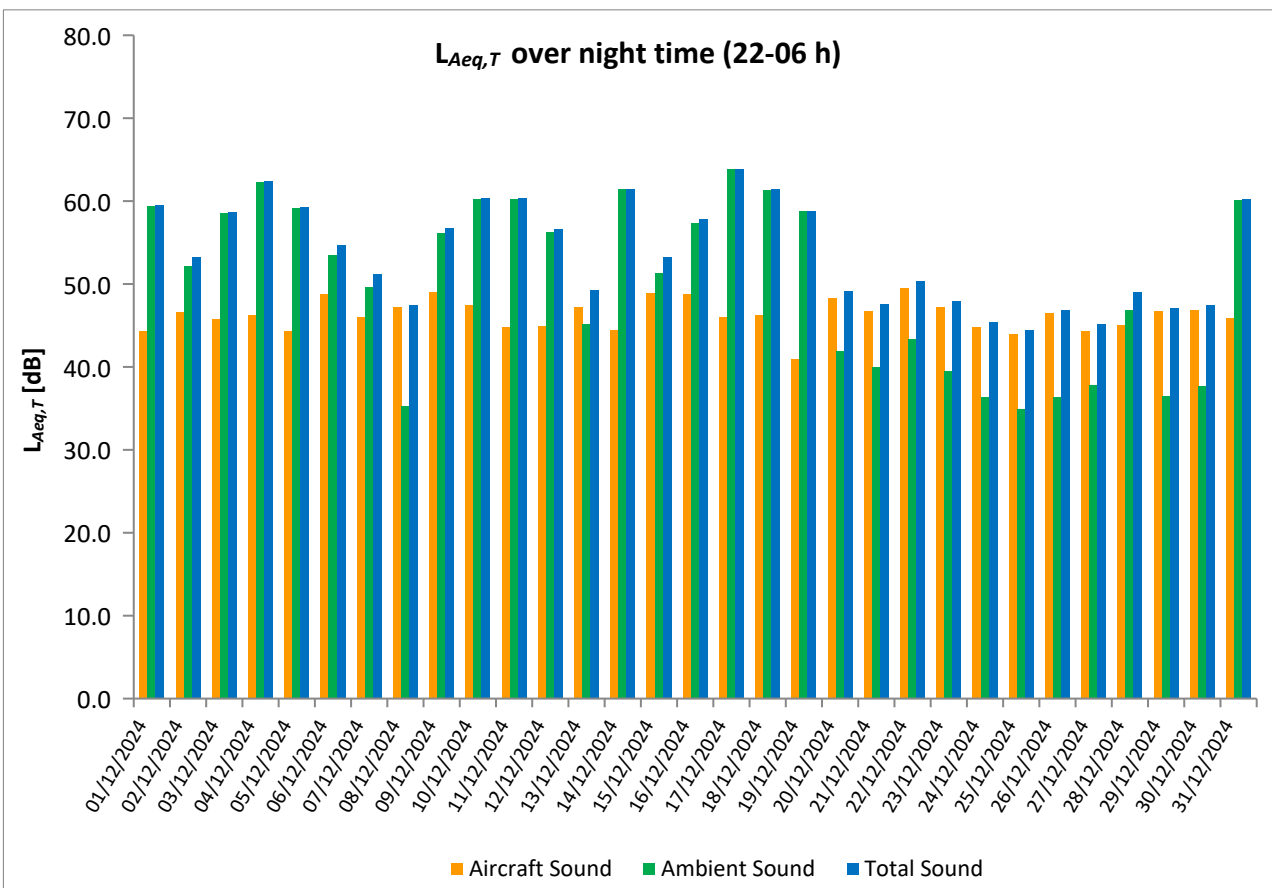
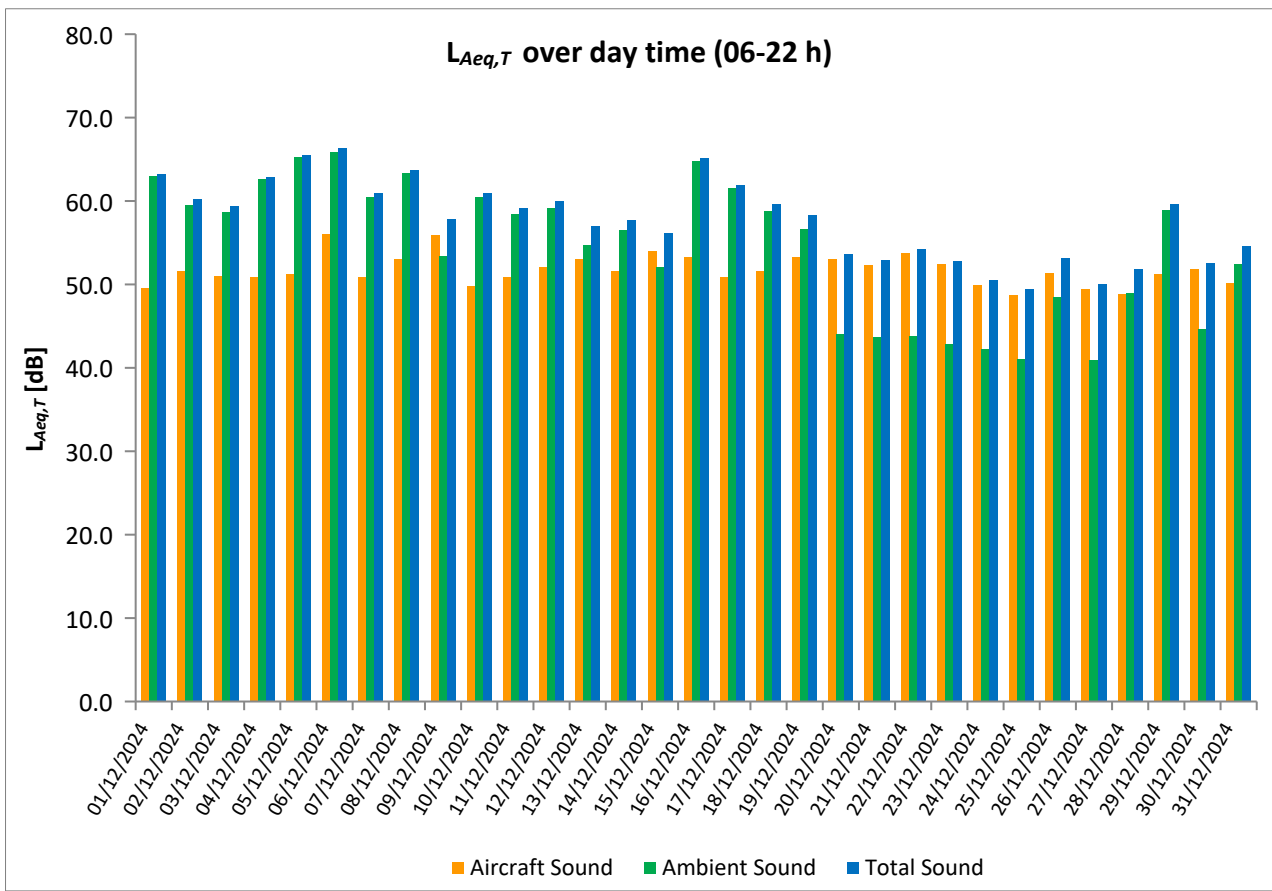


	Total Sound [dB]		Aircraft Sound [dB]		Ambient Sound [dB]	
	L <sub>Aeq,T</sub> DAY	L <sub>Aeq,T</sub> NIGHT	L <sub>Aeq,T</sub> DAY	L <sub>Aeq,T</sub> NIGHT	L <sub>Aeq,T</sub> DAY	L <sub>Aeq,T</sub> NIGHT
01/12/2024	63.2	59.5	49.6	44.3	63.0	59.4
02/12/2024	60.2	53.3	51.6	46.6	59.5	52.2
03/12/2024	59.4	58.7	51.0	45.8	58.7	58.5
04/12/2024	62.9	62.4	50.9	46.2	62.6	62.3
05/12/2024	65.5	59.3	51.2	44.3	65.3	59.1
06/12/2024	66.3	54.7	56.1	48.8	65.9	53.5
07/12/2024	61.0	51.2	50.9	46.0	60.5	49.6
08/12/2024	63.7	47.4	53.1	47.2	63.3	35.3
09/12/2024	57.8	56.8	55.9	49.0	53.4	56.1
10/12/2024	60.9	60.4	49.8	47.5	60.5	60.2
11/12/2024	59.2	60.4	50.9	44.8	58.5	60.3
12/12/2024	60.0	56.6	52.1	44.9	59.2	56.3
13/12/2024	57.0	49.3	53.1	47.2	54.7	45.2
14/12/2024	57.7	61.5	51.6	44.5	56.5	61.4
15/12/2024	56.2	53.3	54.0	48.9	52.1	51.3
16/12/2024	65.1	57.8	53.3	48.8	64.8	57.3
17/12/2024	61.9	63.8	50.9	46.0	61.5	63.8
18/12/2024	59.6	61.4	51.6	46.3	58.8	61.3
19/12/2024	58.3	58.8	53.3	41.0	56.6	58.8
20/12/2024	53.6	49.2	53.0	48.3	44.1	41.9
21/12/2024	52.9	47.6	52.3	46.7	43.7	40.0
22/12/2024	54.3	50.4	53.8	49.5	43.8	43.4
23/12/2024	52.8	47.9	52.4	47.2	42.9	39.5
24/12/2024	50.5	45.4	49.9	44.8	42.2	36.4
25/12/2024	49.4	44.5	48.7	44.0	41.1	34.9
26/12/2024	53.2	46.9	51.4	46.5	48.5	36.4
27/12/2024	50.1	45.2	49.5	44.3	40.9	37.8
28/12/2024	51.9	49.0	48.8	45.1	49.0	46.8
29/12/2024	59.6	47.1	51.2	46.7	58.9	36.5
30/12/2024	52.6	47.4	51.8	46.9	44.6	37.7
31/12/2024	54.6	60.2	50.2	45.9	52.5	60.1
Sum	60.1	57.3	52.1	46.6	59.4	56.9

\* Availability < 50%

\*\* One or more events measured at wind speed above 5 m/s, not included into calculation

Equivalent Continuous Sound Pressure Level  
**MP08 Horoměřice střed**  
**December 2024**





# Equivalent Continuous Sound Pressure Level

## MP09 Praha - Přední Kopanina

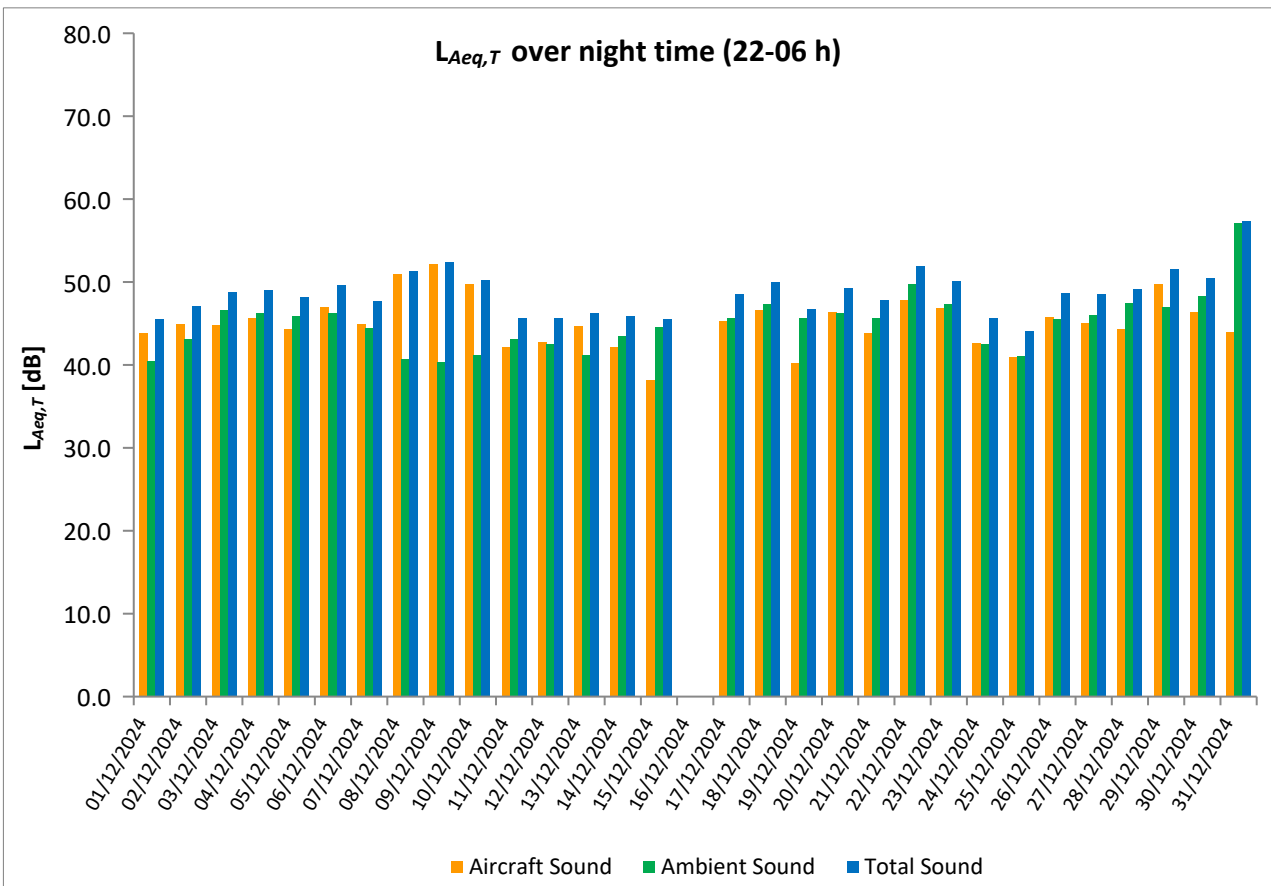
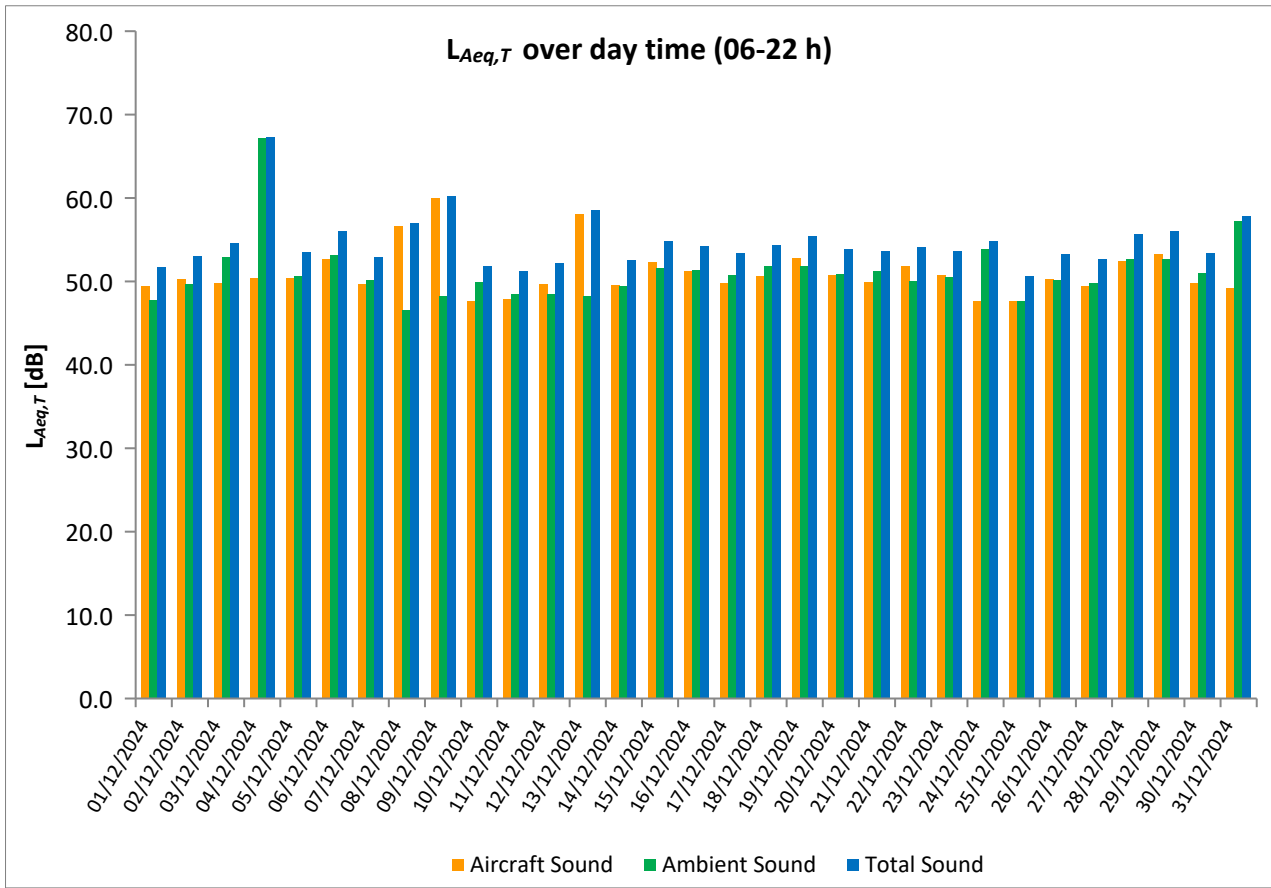
### December 2024

	Total Sound [dB]		Aircraft Sound [dB]		Ambient Sound [dB]	
	L <sub>Aeq,T</sub> DAY	L <sub>Aeq,T</sub> NIGHT	L <sub>Aeq,T</sub> DAY	L <sub>Aeq,T</sub> NIGHT	L <sub>Aeq,T</sub> DAY	L <sub>Aeq,T</sub> NIGHT
01/12/2024	51.7	45.5	49.5	43.8	47.8	40.5
02/12/2024	53.0	47.1	50.3	44.9	49.7	43.1
03/12/2024	54.6	48.8	49.8	44.8	52.9	46.6
04/12/2024	67.3	49.0	50.4	45.7	67.2	46.2
05/12/2024	53.5	48.2	50.4	44.3	50.6	45.9
06/12/2024	56.0	49.6	52.7	47.0	53.2	46.2
07/12/2024	52.9	47.7	49.7	44.9	50.2	44.5
08/12/2024	57.0	51.3	56.6	50.9	46.6	40.7
09/12/2024	60.2	52.4	60.0	52.2	48.2	40.4
10/12/2024	51.9	50.2	47.6	49.7	49.9	41.2
11/12/2024	51.2	45.6	47.9	42.1	48.5	43.1
12/12/2024	52.2	45.7	49.7	42.8	48.5	42.5
13/12/2024	58.6	46.3	58.1	44.7	48.3	41.2
14/12/2024	52.6	45.9	49.6	42.1	49.5	43.5
15/12/2024	54.9	45.5	52.3	38.2	51.6	44.6
16/12/2024	54.3	*	51.2	*	51.4	*
17/12/2024	53.4	48.5	49.8	45.3	50.8	45.7
18/12/2024	54.4	50.0	50.7	46.6	51.9	47.3
19/12/2024	55.4	46.7	52.8	40.2	51.9	45.6
20/12/2024	53.9	49.3	50.8	46.4	50.9	46.2
21/12/2024	53.6	47.8	49.9	43.8	51.3	45.6
22/12/2024	54.1	51.9	51.9	47.8	50.0	49.8
23/12/2024	53.7	50.1	50.8	46.9	50.5	47.3
24/12/2024	54.8	45.6	47.6	42.6	53.9	42.5
25/12/2024	50.7	44.1	47.7	41.0	47.6	41.1
26/12/2024	53.3	48.7	50.3	45.8	50.2	45.5
27/12/2024	52.7	48.5	49.5	45.0	49.8	46.0
28/12/2024	55.7	49.1	52.5	44.3	52.7	47.4
29/12/2024	56.0	51.6	53.3	49.8	52.7	47.0
30/12/2024	53.4	50.5	49.8	46.4	51.0	48.3
31/12/2024	57.9	57.3	49.2	44.0	57.3	57.1
Sum	56.8	49.7	52.3	46.3	54.8	47.0

\* Availability < 50%

\*\* One or more events measured at wind speed above 5 m/s, not included into calculation

Equivalent Continuous Sound Pressure Level  
 MP09 Praha - Přední Kopanina  
 December 2024



# Equivalent Continuous Sound Pressure Level

## MP10 Horoměřice

### December 2024

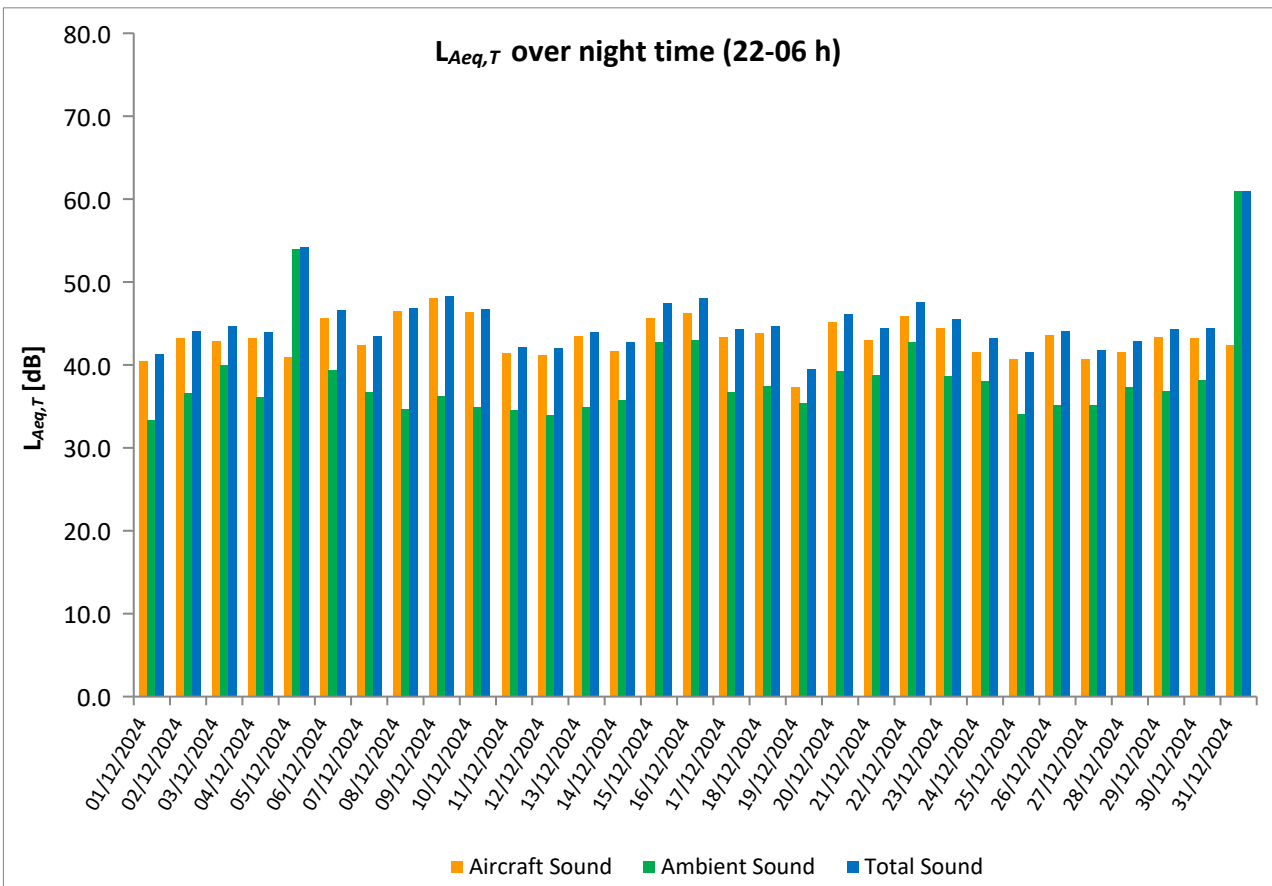
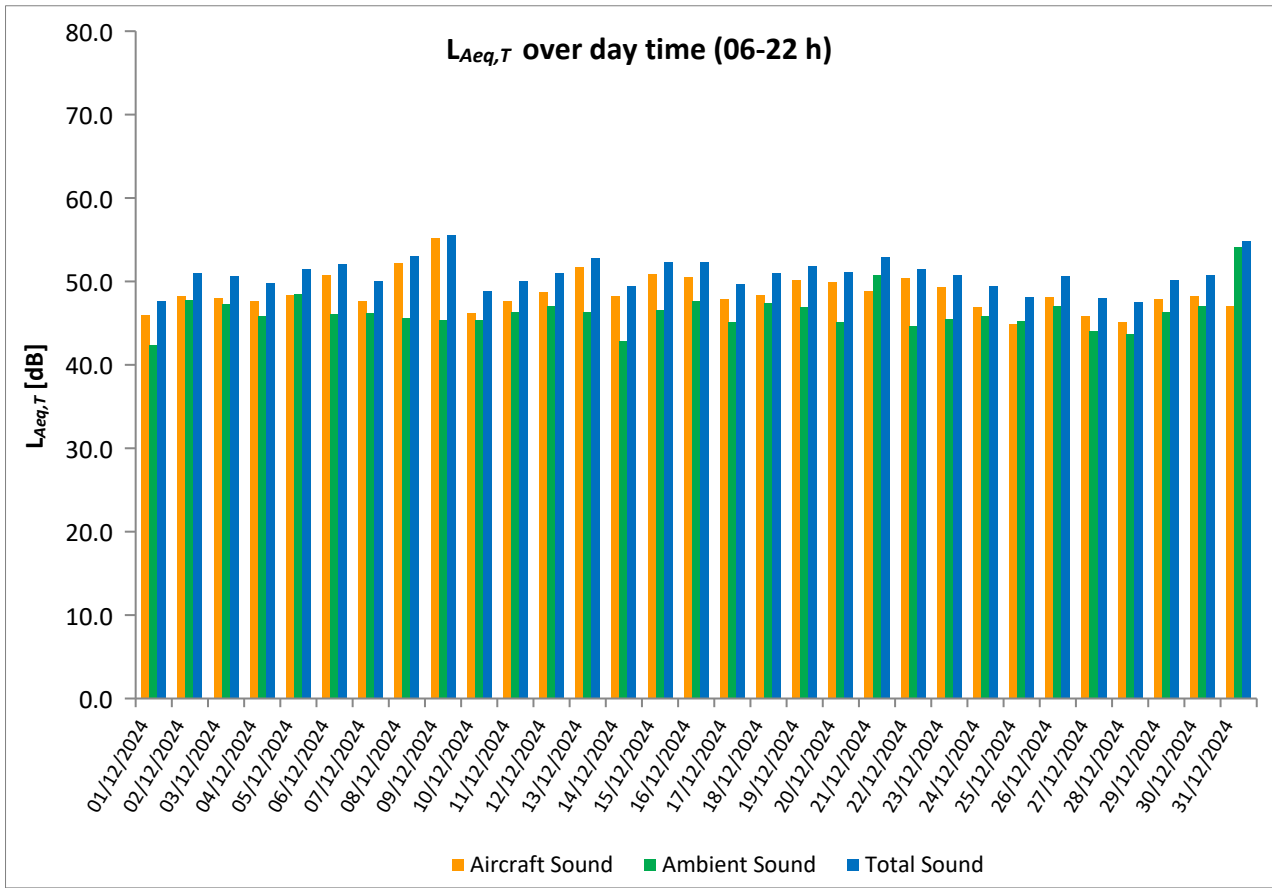


	Total Sound [dB]		Aircraft Sound [dB]		Ambient Sound [dB]	
	L <sub>Aeq,T</sub> DAY	L <sub>Aeq,T</sub> NIGHT	L <sub>Aeq,T</sub> DAY	L <sub>Aeq,T</sub> NIGHT	L <sub>Aeq,T</sub> DAY	L <sub>Aeq,T</sub> NIGHT
01/12/2024	47.6	41.3	46.0	40.5	42.4	33.4
02/12/2024	51.0	44.1	48.2	43.2	47.8	36.6
03/12/2024	50.7	44.7	48.0	42.9	47.3	40.0
04/12/2024	49.8	44.0	47.7	43.2	45.8	36.1
05/12/2024	51.5	54.2	48.4	41.0	48.5	54.0
06/12/2024	52.1	46.6	50.8	45.6	46.1	39.4
07/12/2024	50.0	43.5	47.6	42.4	46.2	36.7
08/12/2024	53.1	46.8	52.2	46.5	45.6	34.7
09/12/2024	55.6	48.3	55.2	48.0	45.4	36.3
10/12/2024	48.8	46.7	46.2	46.4	45.4	34.9
11/12/2024	50.0	42.2	47.6	41.4	46.3	34.6
12/12/2024	51.0	42.0	48.7	41.2	47.1	33.9
13/12/2024	52.8	44.0	51.7	43.5	46.3	34.9
14/12/2024	49.4	42.7	48.3	41.7	42.9	35.7
15/12/2024	52.3	47.4	50.9	45.6	46.6	42.7
16/12/2024	52.3	48.0	50.5	46.3	47.7	43.0
17/12/2024	49.7	44.3	47.9	43.4	45.1	36.7
18/12/2024	51.0	44.7	48.4	43.8	47.4	37.5
19/12/2024	51.8	39.5	50.2	37.3	46.9	35.4
20/12/2024	51.1	46.1	49.9	45.2	45.1	39.2
21/12/2024	52.9	44.4	48.8	43.0	50.8	38.8
22/12/2024	51.5	47.6	50.4	45.9	44.7	42.8
23/12/2024	50.8	45.5	49.3	44.4	45.5	38.7
24/12/2024	49.4	43.2	46.9	41.6	45.8	38.1
25/12/2024	48.1	41.5	44.9	40.7	45.3	34.1
26/12/2024	50.6	44.1	48.1	43.6	47.1	35.2
27/12/2024	48.0	41.8	45.8	40.7	44.1	35.2
28/12/2024	47.5	42.9	45.1	41.5	43.7	37.3
29/12/2024	50.2	44.3	47.9	43.4	46.3	36.9
30/12/2024	50.8	44.4	48.3	43.2	47.1	38.2
31/12/2024	54.9	61.0	47.1	42.4	54.1	61.0
Sum	51.3	49.0	49.2	43.8	47.0	47.4

\* Availability < 50%

\*\* One or more events measured at wind speed above 5 m/s, not included into calculation

Equivalent Continuous Sound Pressure Level  
 MP10 Horoměřice  
 December 2024



# Equivalent Continuous Sound Pressure Level

## MP11 Roztoky

### December 2024



	Total Sound [dB]		Aircraft Sound [dB]		Ambient Sound [dB]	
	L <sub>Aeq,T</sub> DAY	L <sub>Aeq,T</sub> NIGHT	L <sub>Aeq,T</sub> DAY	L <sub>Aeq,T</sub> NIGHT	L <sub>Aeq,T</sub> DAY	L <sub>Aeq,T</sub> NIGHT
01/12/2024	50.0	44.1	48.7	43.1	43.9	37.2
02/12/2024	53.9	47.4	51.9	46.6	49.5	39.2
03/12/2024	54.7	48.5	51.2	46.0	52.1	44.8
04/12/2024	54.9	47.7	51.2	47.2	52.4	38.3
05/12/2024	57.9	45.4	52.2	44.2	56.6	39.4
06/12/2024	55.4	49.6	53.9	48.8	50.0	41.9
07/12/2024	52.7	46.5	51.2	45.6	47.4	39.2
08/12/2024	53.3	46.1	52.7	45.5	44.5	37.3
09/12/2024	55.0	47.9	53.3	47.1	50.0	40.2
10/12/2024	53.2	47.4	50.8	46.2	49.5	41.1
11/12/2024	51.6	45.8	50.5	45.1	44.9	37.8
12/12/2024	51.8	45.2	50.7	44.3	45.1	37.8
13/12/2024	55.4	50.4	49.9	45.4	54.0	48.7
14/12/2024	52.8	45.0	51.2	43.8	47.4	38.8
15/12/2024	54.7	49.3	53.7	47.9	47.7	43.7
16/12/2024	54.5	49.7	53.4	48.6	47.9	43.4
17/12/2024	55.6	46.6	50.8	45.8	53.9	38.8
18/12/2024	53.1	48.3	51.9	47.5	46.9	40.4
19/12/2024	54.4	42.7	53.6	40.2	46.8	39.1
20/12/2024	54.0	48.4	52.7	46.9	48.1	43.0
21/12/2024	53.4	46.7	52.0	45.5	47.9	40.4
22/12/2024	54.3	49.7	53.7	48.9	46.0	41.8
23/12/2024	52.9	48.2	52.1	47.2	45.2	41.5
24/12/2024	52.1	46.0	50.6	45.2	46.8	38.2
25/12/2024	51.7	45.7	49.8	45.0	47.2	37.7
26/12/2024	52.6	45.5	50.7	44.7	48.2	38.1
27/12/2024	49.2	42.5	46.6	41.3	45.7	36.3
28/12/2024	47.5	43.9	45.7	42.7	42.7	37.4
29/12/2024	51.0	46.8	50.2	46.1	43.5	37.9
30/12/2024	52.6	47.3	51.5	46.6	46.4	38.8
31/12/2024	64.6	53.3	49.7	45.2	64.5	52.5
Sum	55.0	47.6	51.6	46.0	52.4	42.6

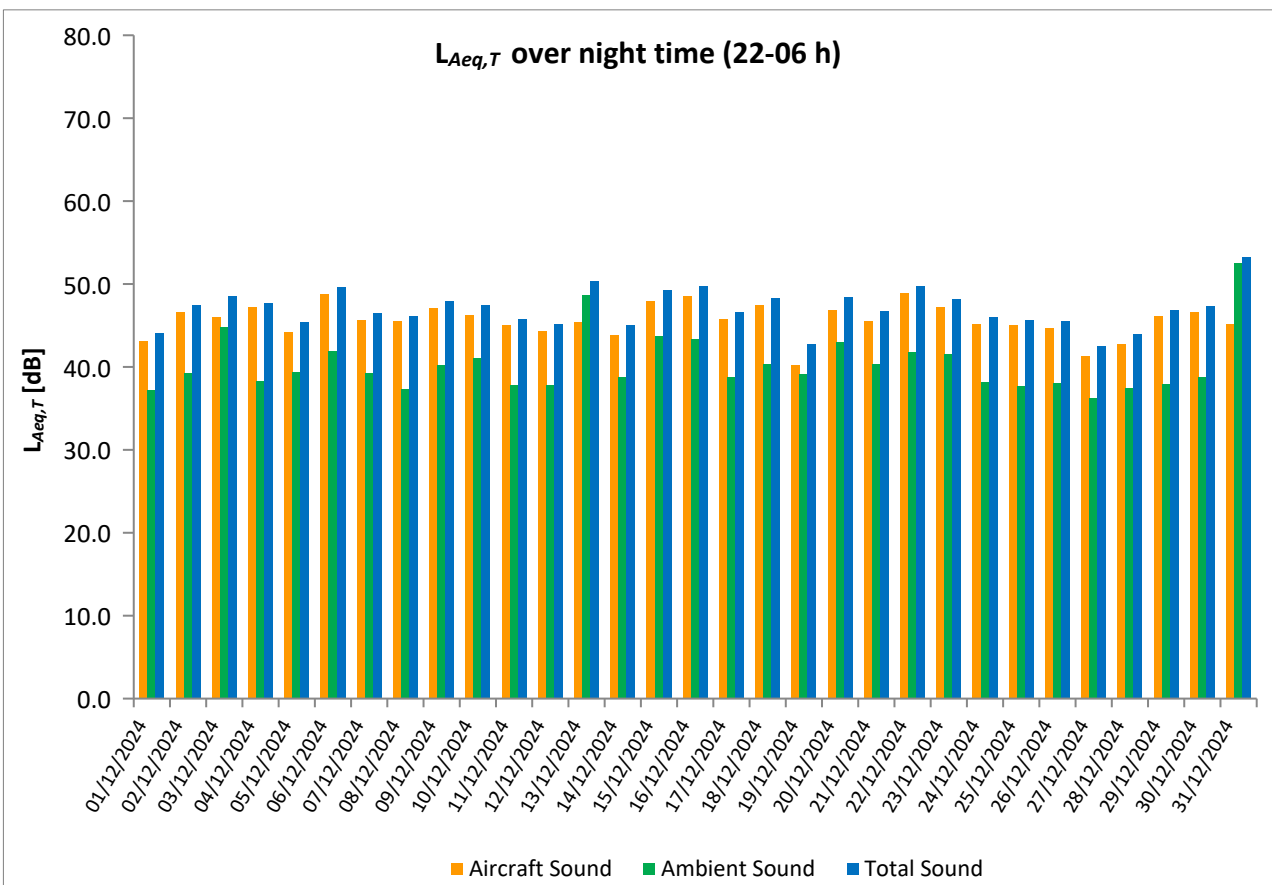
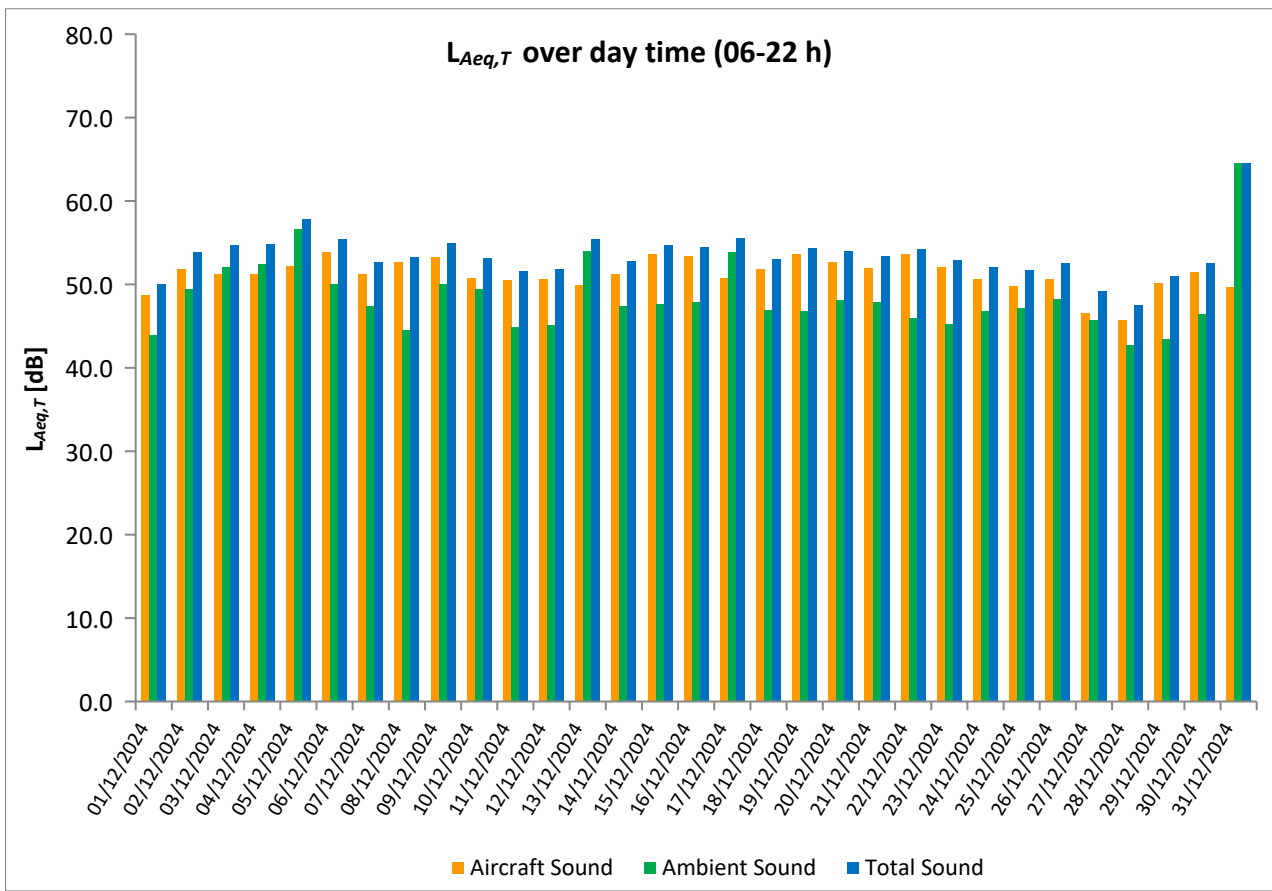
\* Availability < 50%

\*\* One or more events measured at wind speed above 5 m/s, not included into calculation

# Equivalent Continuous Sound Pressure Level

## MP11 Roztoky

December 2024



# Equivalent Continuous Sound Pressure Level

## MP12 Praha 17 - Řepy

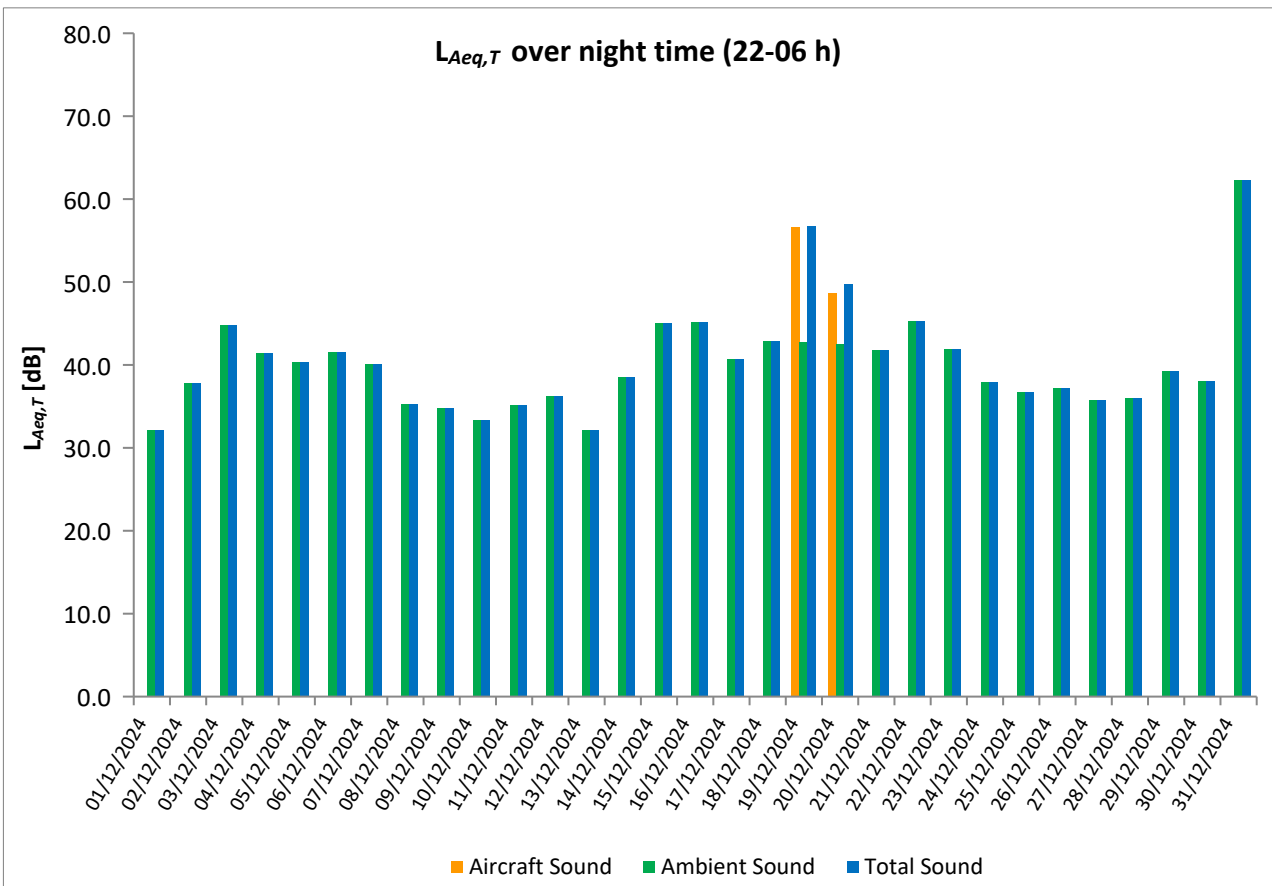
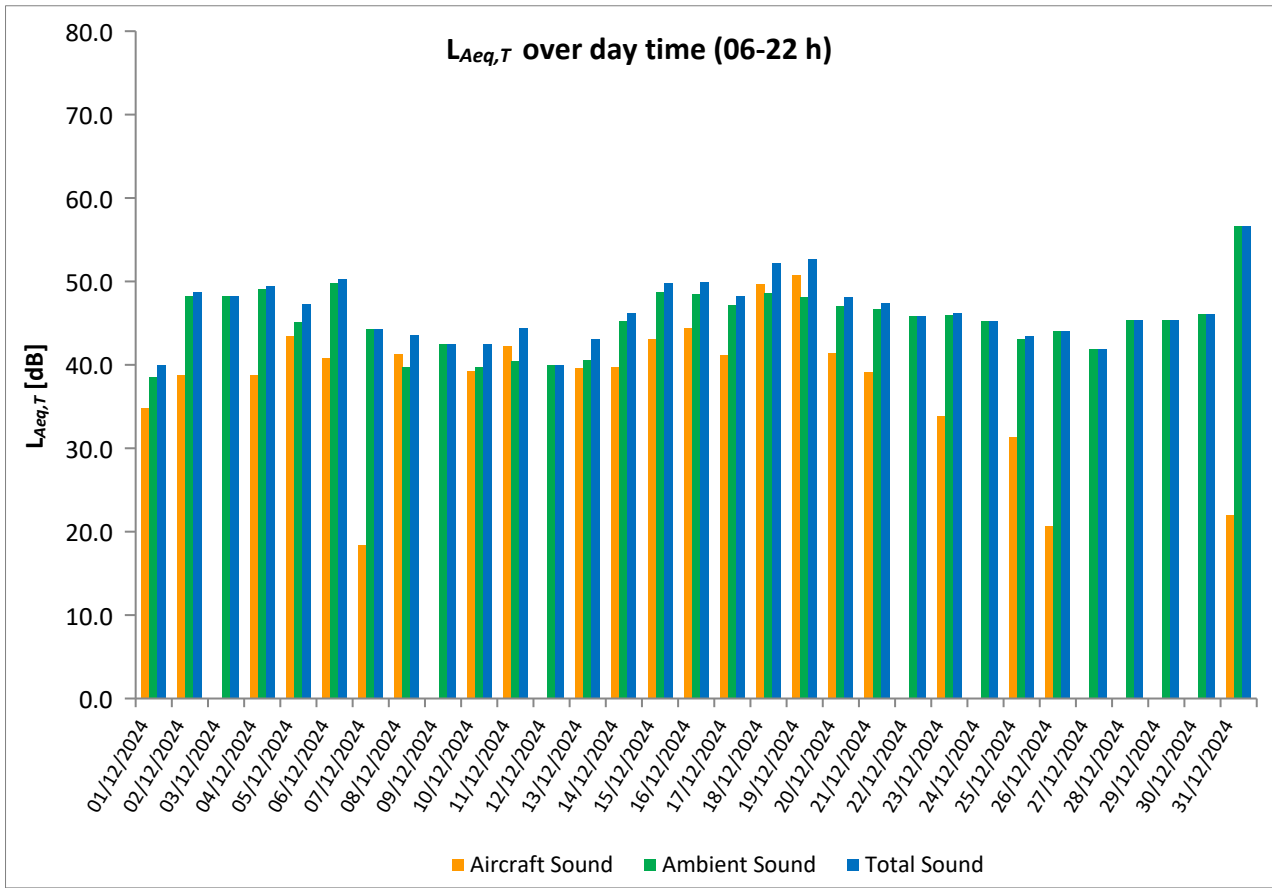
### December 2024

	Total Sound [dB]		Aircraft Sound [dB]		Ambient Sound [dB]	
	L <sub>Aeq,T</sub> DAY	L <sub>Aeq,T</sub> NIGHT	L <sub>Aeq,T</sub> DAY	L <sub>Aeq,T</sub> NIGHT	L <sub>Aeq,T</sub> DAY	L <sub>Aeq,T</sub> NIGHT
01/12/2024	40.0	32.1	34.8		38.5	32.1
02/12/2024	48.7	37.8	38.8		48.2	37.8
03/12/2024	48.2	44.8			48.2	44.8
04/12/2024	49.5	41.4	38.8		49.1	41.4
05/12/2024	47.3	40.3	43.4		45.1	40.3
06/12/2024	50.3	41.6	40.8		49.8	41.6
07/12/2024	44.3	40.1	18.4		44.3	40.1
08/12/2024	43.6	35.3	41.3		39.7	35.3
09/12/2024	42.5	34.8			42.5	34.8
10/12/2024	42.5	33.4	39.3		39.7	33.4
11/12/2024	44.4	35.1	42.2		40.5	35.1
12/12/2024	40.0	36.2			40.0	36.2
13/12/2024	43.1	32.1	39.6		40.6	32.1
14/12/2024	46.2	38.5	39.7		45.2	38.5
15/12/2024	49.8	45.1	43.1		48.7	45.1
16/12/2024	49.9	45.2	44.4		48.5	45.2
17/12/2024	48.2	40.7	41.2		47.2	40.7
18/12/2024	52.2	42.9	49.7		48.6	42.9
19/12/2024	52.7	56.7	50.8	56.6	48.1	42.7
20/12/2024	48.1	49.7	41.4	48.7	47.1	42.5
21/12/2024	47.4	41.8	39.2		46.7	41.8
22/12/2024	45.8	45.3			45.8	45.3
23/12/2024	46.2	41.9	33.9		46.0	41.9
24/12/2024	45.3	37.9			45.3	37.9
25/12/2024	43.4	36.7	31.3		43.1	36.7
26/12/2024	44.0	37.2	20.7		44.0	37.2
27/12/2024	41.9	35.8			41.9	35.8
28/12/2024	45.4	36.0			45.4	36.0
29/12/2024	45.4	39.2			45.4	39.2
30/12/2024	46.1	38.0			46.1	38.0
31/12/2024	56.7	62.3	22.0		56.7	62.3
Sum	48.3	49.2	41.2	42.3	47.3	48.2

\* Availability < 50%

\*\* One or more events measured at wind speed above 5 m/s, not included into calculation

Equivalent Continuous Sound Pressure Level  
 MP12 Praha 17 - Řepy  
 December 2024





# Equivalent Continuous Sound Pressure Level

## MP13 Suchdol

### December 2024

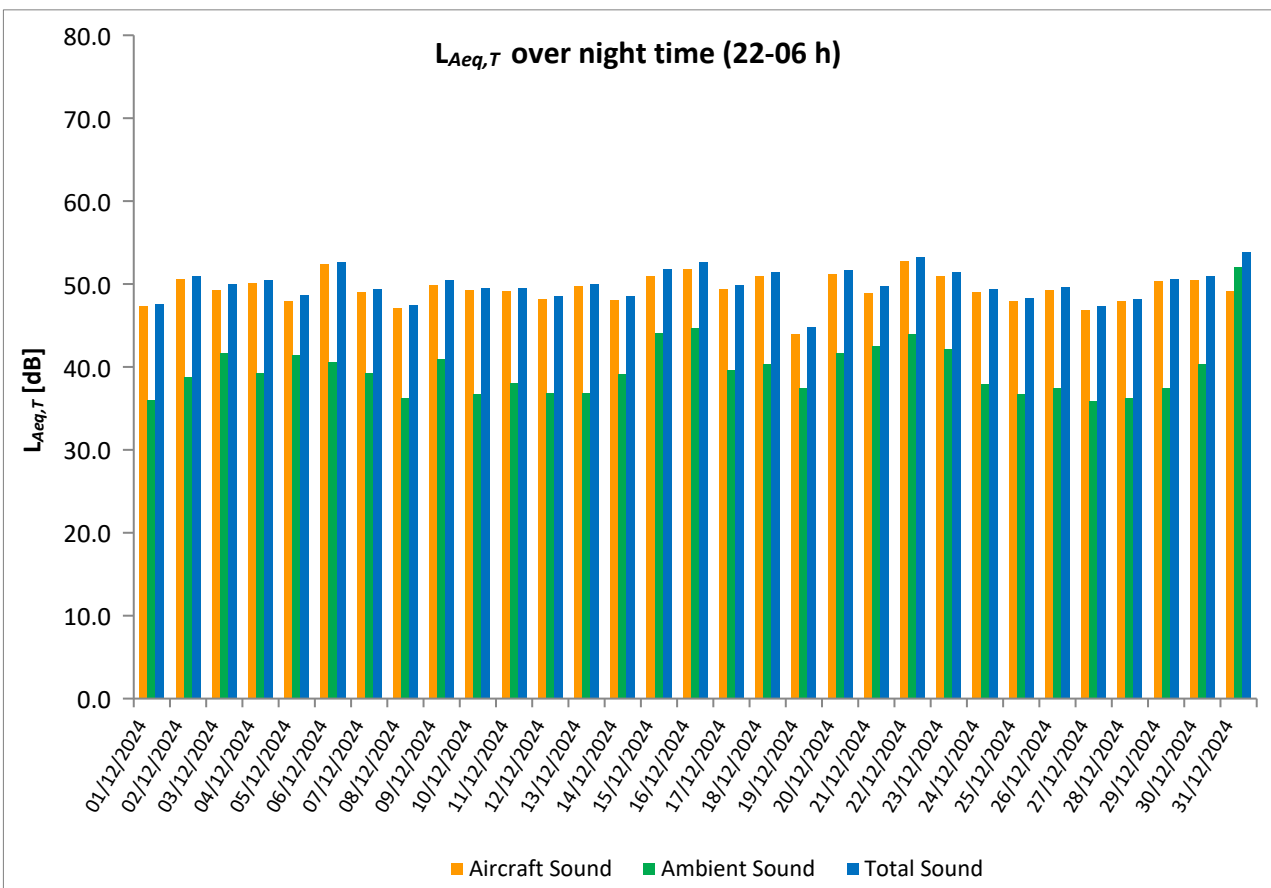
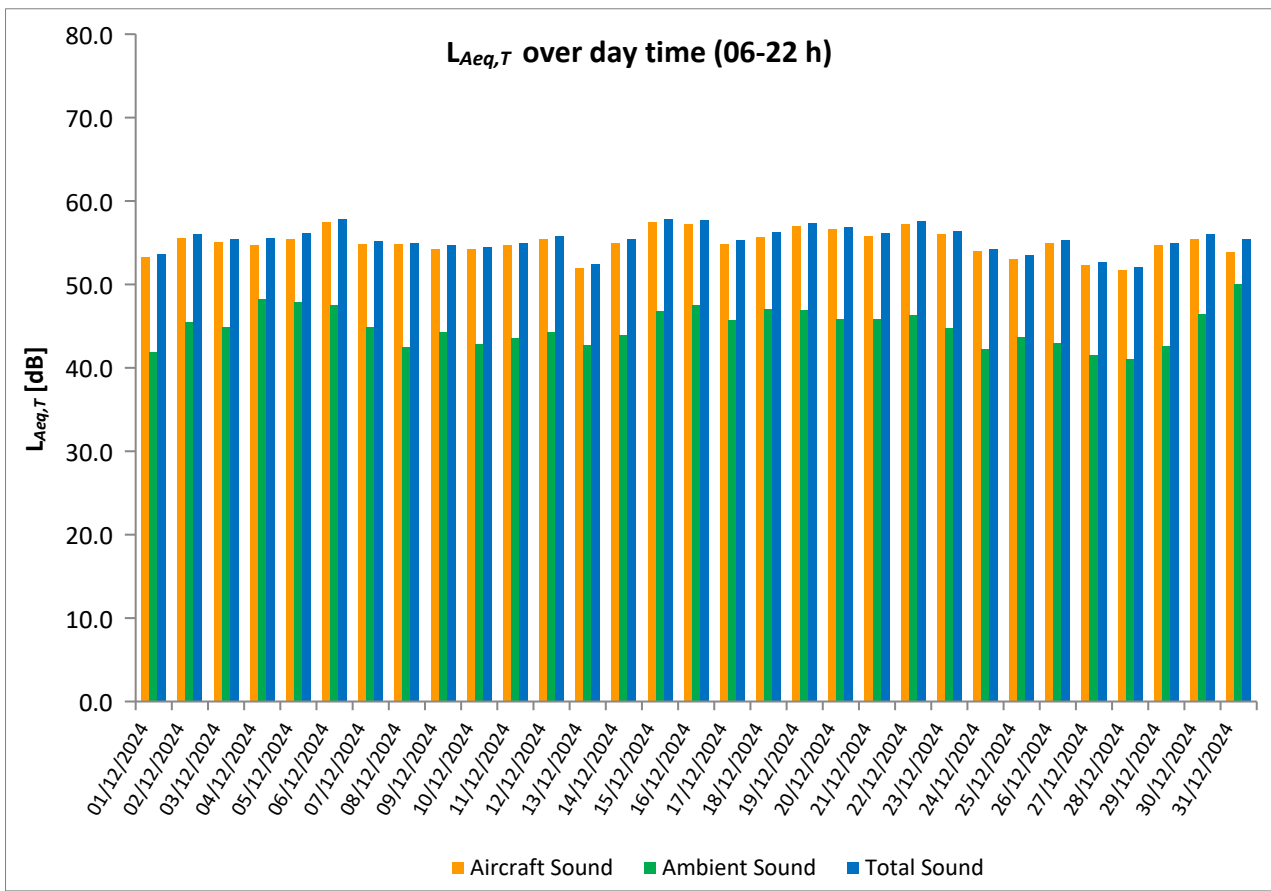


	Total Sound [dB]		Aircraft Sound [dB]		Ambient Sound [dB]	
	L <sub>Aeq,T</sub> DAY	L <sub>Aeq,T</sub> NIGHT	L <sub>Aeq,T</sub> DAY	L <sub>Aeq,T</sub> NIGHT	L <sub>Aeq,T</sub> DAY	L <sub>Aeq,T</sub> NIGHT
01/12/2024	53.6	47.6	53.3	47.3	41.9	36.0
02/12/2024	56.0	50.9	55.6	50.6	45.5	38.8
03/12/2024	55.5	50.0	55.1	49.3	44.9	41.7
04/12/2024	55.6	50.5	54.7	50.1	48.2	39.3
05/12/2024	56.2	48.7	55.5	47.9	47.9	41.4
06/12/2024	57.9	52.7	57.5	52.4	47.5	40.6
07/12/2024	55.2	49.4	54.8	49.0	44.9	39.3
08/12/2024	55.0	47.5	54.8	47.1	42.5	36.3
09/12/2024	54.7	50.5	54.3	49.9	44.3	41.0
10/12/2024	54.5	49.5	54.2	49.3	42.9	36.7
11/12/2024	55.0	49.5	54.7	49.2	43.6	38.1
12/12/2024	55.8	48.5	55.4	48.2	44.3	36.9
13/12/2024	52.5	50.0	52.0	49.8	42.7	36.9
14/12/2024	55.4	48.6	55.0	48.1	43.9	39.1
15/12/2024	57.8	51.8	57.5	51.0**	46.8	44.1
16/12/2024	57.7	52.6	57.2	51.8	47.5	44.7
17/12/2024	55.3	49.9	54.8	49.4	45.7	39.6
18/12/2024	56.3	51.4	55.7	51.0	47.0	40.4
19/12/2024	57.4	44.8	57.0	43.9	46.9	37.5
20/12/2024	56.9	51.7	56.6	51.2	45.8	41.7
21/12/2024	56.2	49.8	55.8	48.9	45.8	42.5
22/12/2024	57.6	53.3	57.3	52.8	46.3	43.9
23/12/2024	56.4	51.4	56.1	50.9	44.8	42.1
24/12/2024	54.3	49.4	54.0	49.0	42.3	37.9
25/12/2024	53.5	48.3	53.1	47.9	43.7	36.7
26/12/2024	55.3	49.6	55.0	49.3	43.0	37.5
27/12/2024	52.7	47.3	52.3	46.9	41.5	35.9
28/12/2024	52.1	48.2	51.7	47.9	41.1	36.2
29/12/2024	55.0	50.6	54.7	50.3	42.6	37.4
30/12/2024	56.0	50.9	55.5	50.5	46.4	40.3
31/12/2024	55.5	53.9	53.9	49.2	50.1	52.1
Sum	55.7	50.3	55.2	49.7	45.5	41.8

\* Availability < 50%

\*\* One or more events measured at wind speed above 5 m/s, not included into calculation

Equivalent Continuous Sound Pressure Level  
**MP13 Suchdol**  
**December 2024**



# Equivalent Continuous Sound Pressure Level

## MP14 Malé Kyšice

### December 2024



	Total Sound [dB]		Aircraft Sound [dB]		Ambient Sound [dB]	
	L <sub>Aeq,T</sub> DAY	L <sub>Aeq,T</sub> NIGHT	L <sub>Aeq,T</sub> DAY	L <sub>Aeq,T</sub> NIGHT	L <sub>Aeq,T</sub> DAY	L <sub>Aeq,T</sub> NIGHT
01/12/2024	49.0	43.8	48.2	43.5	41.5	32.3
02/12/2024	51.8	44.4	51.2	43.9	42.7	34.9
03/12/2024	51.3	48.2	50.5	46.0	43.5	44.3
04/12/2024	51.5	46.5	51.0	46.2	41.6	35.8
05/12/2024	50.9	45.1	50.3	44.7	41.6	34.4
06/12/2024	53.4	47.8	51.8	46.7	48.4	41.3
07/12/2024	50.7	44.1	49.9	42.6	43.0	38.7
08/12/2024	53.8	50.5	53.5	50.4	41.9	36.0
09/12/2024	55.1	49.4	54.8	49.2	42.6	36.4
10/12/2024	51.1	45.5	50.7	45.0	40.5	35.5
11/12/2024	50.4	46.6	50.0	46.3	40.7	34.7
12/12/2024	48.5	47.2	47.8	46.6	40.2	38.2
13/12/2024	53.2	42.8	53.0	42.3	40.3	32.6
14/12/2024	48.9	42.7	48.2	42.1	40.7	33.8
15/12/2024	54.5	47.6	53.9	46.5	45.6	41.1
16/12/2024	51.5	46.9	50.7	44.6	43.9	43.0
17/12/2024	50.7	45.2	50.3	44.7	41.0	34.8
18/12/2024	49.9	46.8	48.7	46.2	43.9	37.8
19/12/2024	51.3	43.0	50.7	42.2	42.5	35.4
20/12/2024	52.9	46.1	52.5	45.3	42.2	38.6
21/12/2024	51.1	43.2	50.3	41.8	43.3	37.7
22/12/2024	52.2	48.6	51.6	46.8	43.4	44.0
23/12/2024	51.4	47.8	50.8	47.5	42.4	36.5
24/12/2024	50.1	45.1	49.6	44.7	40.6	33.7
25/12/2024	49.9	42.8	49.5	42.4	39.3	32.2
26/12/2024	49.6	45.7	49.0	45.5	40.6	33.2
27/12/2024	48.7	43.5	48.1	43.1	39.7	33.4
28/12/2024	48.6	42.0	48.0	41.5	39.8	32.5
29/12/2024	51.4	47.2	51.0	46.9	41.1	34.0
30/12/2024	51.6	45.9	51.1	45.6	41.7	35.3
31/12/2024	49.9	45.3	48.9	43.0	43.4	41.4
Sum	51.5	46.2	50.9	45.5	42.5	38.1

\* Availability < 50%

\*\* One or more events measured at wind speed above 5 m/s, not included into calculation

Equivalent Continuous Sound Pressure Level  
**MP14 Malé Kyšice**  
**December 2024**

