

## Equivalent Continuous Sound Pressure Level

MP01 Jeneč

February 2025

	Total Sound [dB]		Aircraft Sound [dB]		Ambient Sound [dB]	
	L <sub>Aeq,T</sub> DAY	L <sub>Aeq,T</sub> NIGHT	L <sub>Aeq,T</sub> DAY	L <sub>Aeq,T</sub> NIGHT	L <sub>Aeq,T</sub> DAY	L <sub>Aeq,T</sub> NIGHT
01/02/2025	54.5	48.6	52.9	47.6	49.5	42.0
02/02/2025	58.4	50.9	57.8	50.5	48.9	40.4
03/02/2025	58.4	50.4	57.8	49.5	50.0	43.3
04/02/2025	56.6	49.7	55.2	48.7	50.9	43.1
05/02/2025	57.9	50.7	56.9	49.8	50.9	43.4
06/02/2025	57.0	49.9	55.3	48.3	52.0	44.6
07/02/2025	52.7	47.2	47.9	43.5	51.0	44.9
08/02/2025	50.3	45.6	45.9	44.6	48.3	38.6
09/02/2025	55.8	46.0	54.8	44.6	48.8	40.4
10/02/2025	53.7	48.0	50.6	46.0	50.7	43.6
11/02/2025	51.5	46.1	44.9	42.2	50.4	43.8
12/02/2025	56.0	49.8	55.3	49.1	48.0	41.7
13/02/2025	58.9	51.9	58.3	51.2	50.5	44.0
14/02/2025	59.5	53.5	58.6	52.6	52.5	46.0
15/02/2025	56.7	49.5	56.1	48.9	47.8	41.1
16/02/2025	54.6	49.1	52.7	48.1	50.2	42.1
17/02/2025	54.8	47.9	51.6	45.6	52.0	44.1
18/02/2025	56.5	49.1	55.0	47.8	51.2	43.4
19/02/2025	53.9	47.6	48.7	46.1	52.3	42.1
20/02/2025	56.3	51.1	55.4	50.3	49.1	43.3
21/02/2025	56.4	50.2	55.4	48.7	49.8	44.7
22/02/2025	54.3	43.9	48.6	40.8	52.9	41.0
23/02/2025	59.8	52.2	59.0	51.9	51.7	40.2
24/02/2025	59.6	51.9	58.8	51.1	52.0	44.2
25/02/2025	56.7	49.0	54.5	47.1	52.6	44.5
26/02/2025	57.9	50.9	57.1	50.5	49.9	40.3
27/02/2025	58.6	52.0	58.0	51.6	50.0	41.3
28/02/2025	59.5	52.4	58.9	51.3	50.9	45.8
Sum	56.9	50.0	55.7	49.0	50.8	43.2

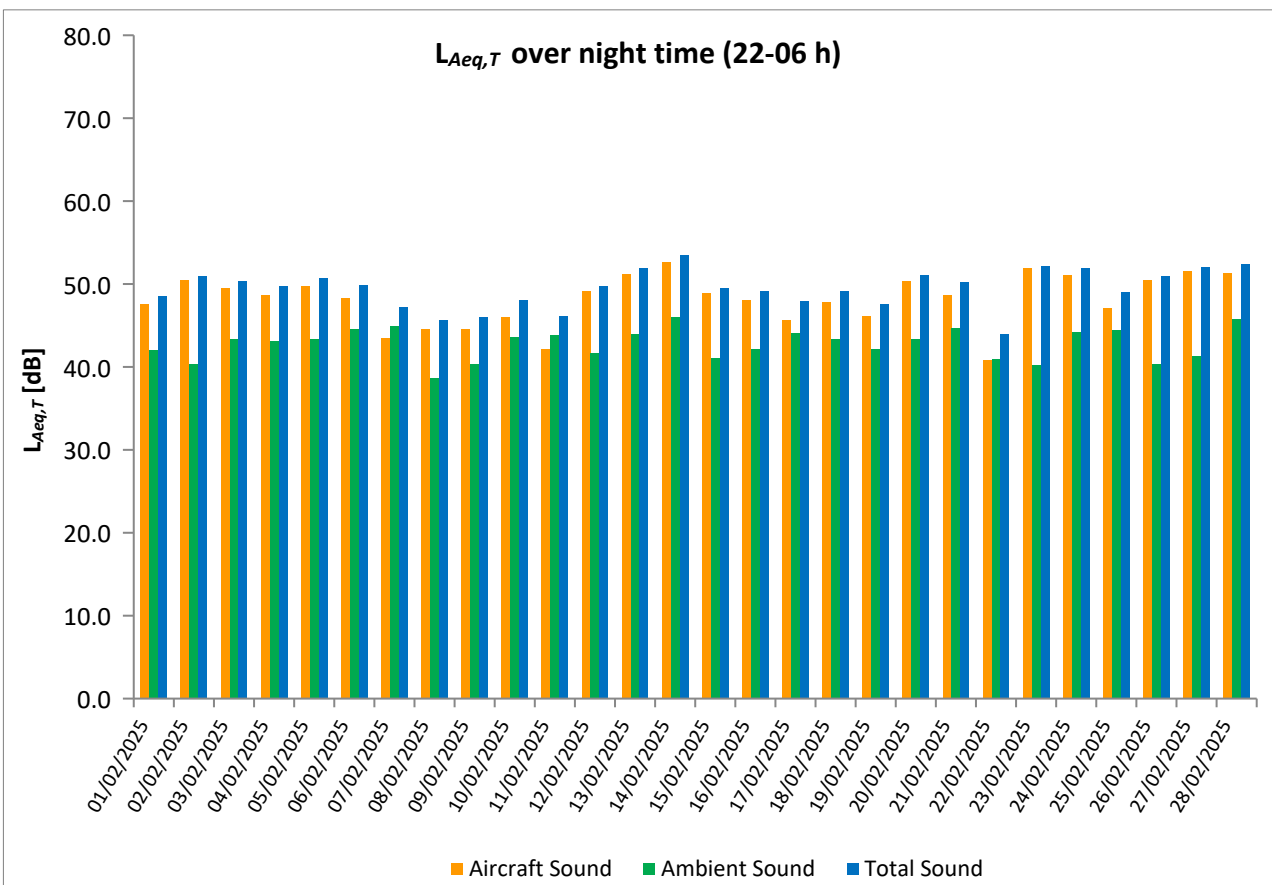
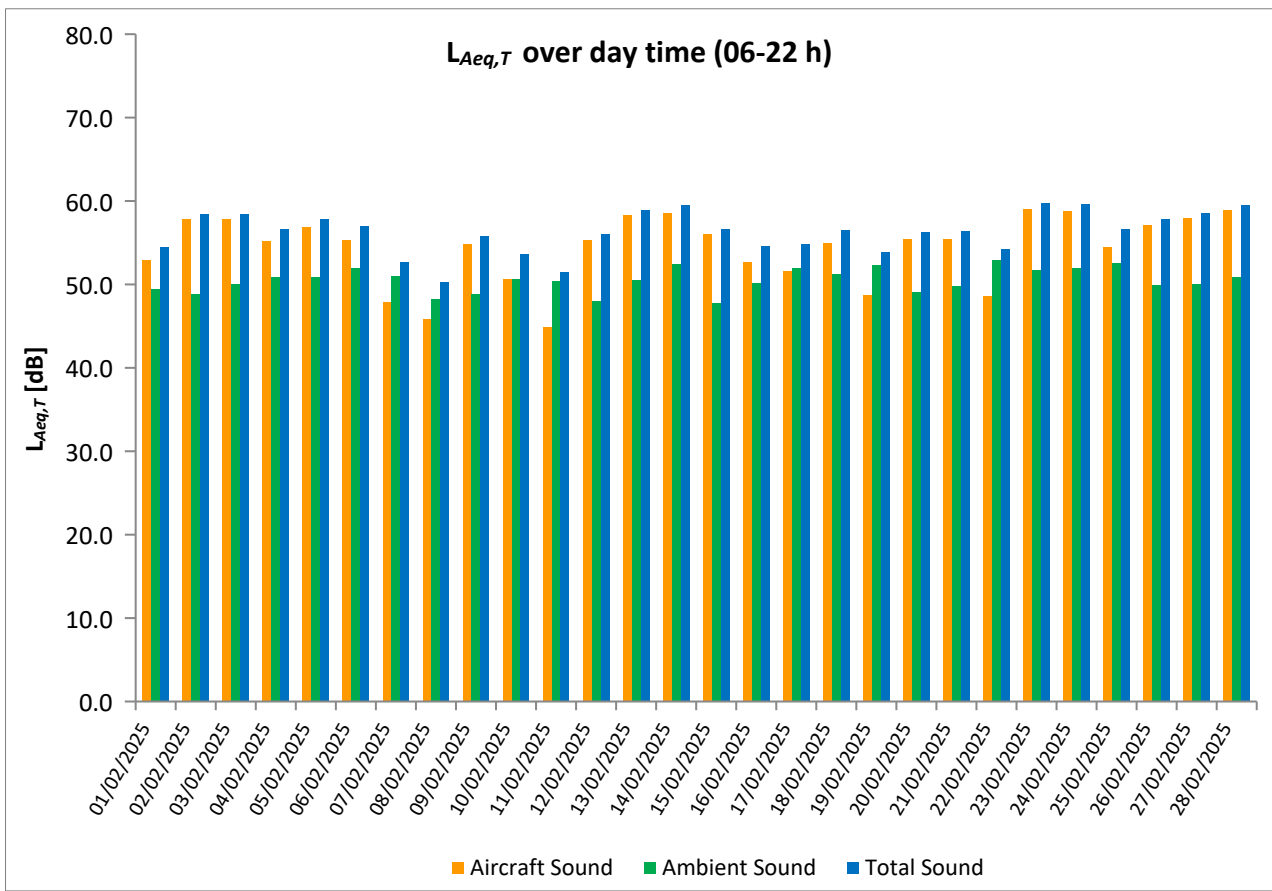
\* Availability < 50%

\*\* One or more events measured at wind speed above 5 m/s, not included into calculation

# Equivalent Continuous Sound Pressure Level

MP01 Jeneč

February 2025



# Equivalent Continuous Sound Pressure Level

## MP02 Červený Újezd

February 2025

	Total Sound [dB]		Aircraft Sound [dB]		Ambient Sound [dB]	
	L <sub>Aeq,T</sub> DAY	L <sub>Aeq,T</sub> NIGHT	L <sub>Aeq,T</sub> DAY	L <sub>Aeq,T</sub> NIGHT	L <sub>Aeq,T</sub> DAY	L <sub>Aeq,T</sub> NIGHT
01/02/2025	51.9	43.3	47.3	41.8	50.0	38.2
02/02/2025	54.0	46.3	52.4	45.7	48.9	37.4
03/02/2025	54.1	45.6	52.3	44.5	49.3	38.9
04/02/2025	51.8	43.9	47.9	42.7	49.5	37.5
05/02/2025	54.1	44.1	50.6	42.4	51.5	39.2
06/02/2025	53.2	46.9	49.9	46.5	50.4	37.0
07/02/2025	51.2	43.4	46.0	41.3	49.7	39.3
08/02/2025	51.1	41.4	42.9	40.1	50.4	35.8
09/02/2025	51.7	39.6	49.6	38.2	47.5	34.0
10/02/2025	51.1	43.6	45.4	42.1	49.8	38.2
11/02/2025	50.3	41.4	40.7	39.0	49.8	37.7
12/02/2025	51.9	44.4	49.6	43.4	47.9	37.4
13/02/2025	54.4	46.5	52.5	45.3	49.9	40.5
14/02/2025	53.4	46.9	51.5	46.5	48.8	36.6
15/02/2025	52.1	44.4	49.9	43.3	48.1	37.7
16/02/2025	50.4	43.6	47.4	42.8	47.4	35.7
17/02/2025	51.2	41.4	46.2	39.7	49.5	36.3
18/02/2025	51.8	43.8	48.7	42.1	49.0	38.8
19/02/2025	50.8	42.6	43.3	41.1	49.9	37.1
20/02/2025	52.2	45.0	49.1	44.3	49.3	37.0
21/02/2025	51.7	44.9	49.3	43.3	47.9	39.8
22/02/2025	50.1	41.9	44.3	36.8	48.8	40.3
23/02/2025	54.7	47.5	53.2	46.4	49.4	40.9
24/02/2025	55.2	46.2	53.0	45.5	51.2	38.1
25/02/2025	52.4	44.3	49.4	42.7	49.5	39.0
26/02/2025	53.8	45.6	51.6	45.1	49.9	36.5
27/02/2025	55.1	46.4	51.8	45.7	52.4	37.9
28/02/2025	54.7	47.5	52.9	46.6	49.9	40.2
Sum	52.8	44.8	49.9	43.7	49.6	38.3

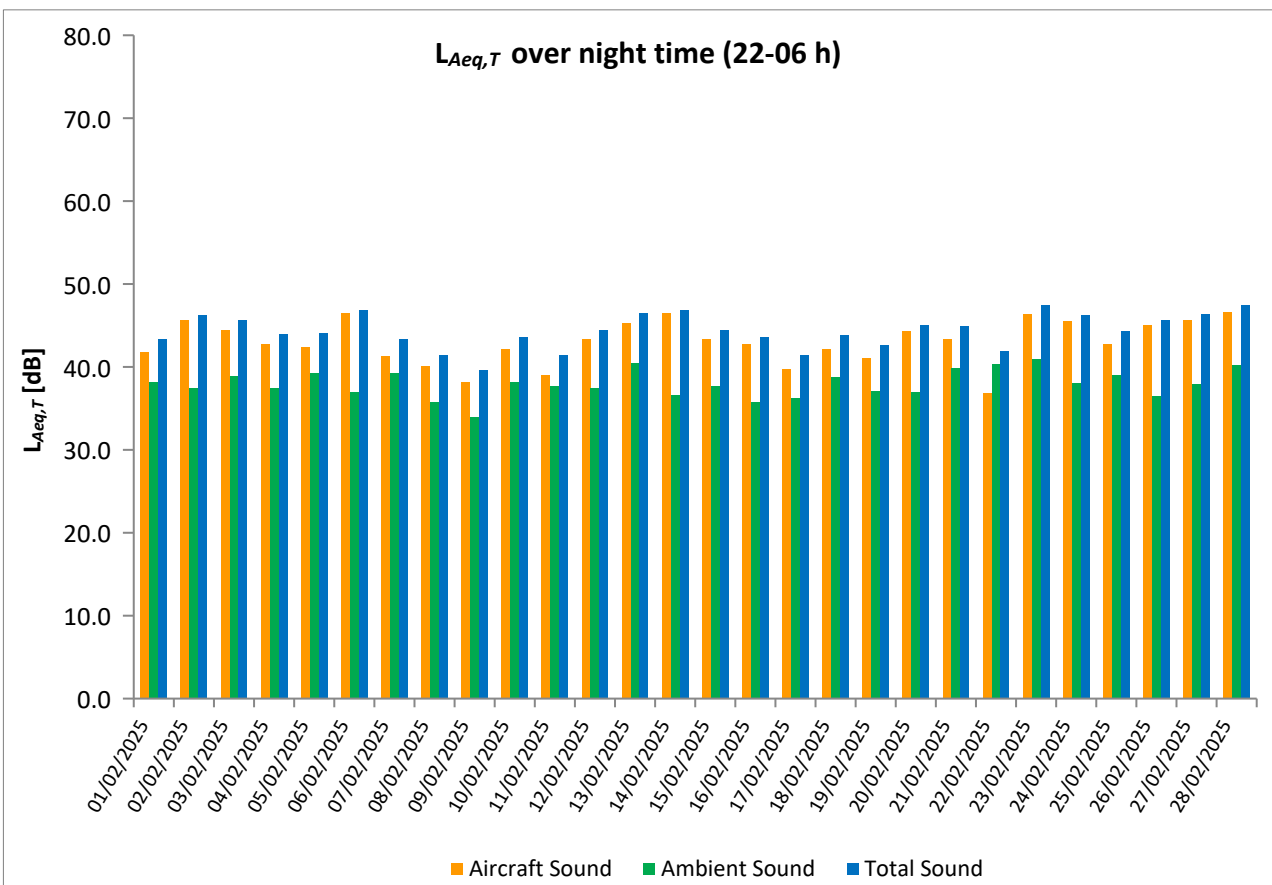
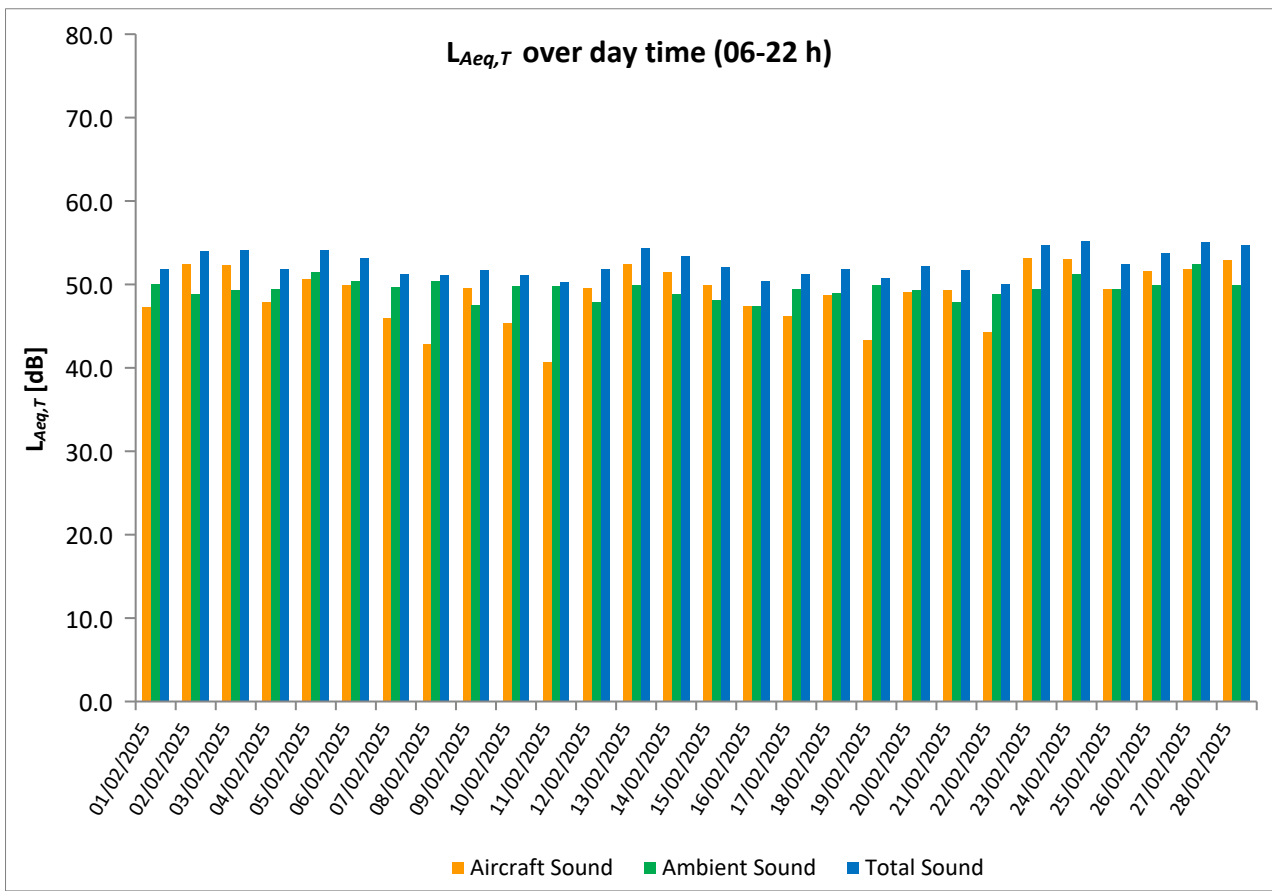
\* Availability < 50%

\*\* One or more events measured at wind speed above 5 m/s, not included into calculation

# Equivalent Continuous Sound Pressure Level

## MP02 Červený Újezd

February 2025



## Equivalent Continuous Sound Pressure Level

### MP03 Unhošť

February 2025

	Total Sound [dB]		Aircraft Sound [dB]		Ambient Sound [dB]	
	L <sub>Aeq,T</sub> DAY	L <sub>Aeq,T</sub> NIGHT	L <sub>Aeq,T</sub> DAY	L <sub>Aeq,T</sub> NIGHT	L <sub>Aeq,T</sub> DAY	L <sub>Aeq,T</sub> NIGHT
01/02/2025	50.9	44.4	49.1	43.6	46.3	36.8
02/02/2025	53.7	47.5	53.3	47.0	42.5	37.9
03/02/2025	53.5	46.2	53.1	45.6	43.7	37.4
04/02/2025	49.9	44.5	48.4	43.7	44.6	36.8
05/02/2025	54.4	44.2	51.3	43.5	51.4	35.9
06/02/2025	53.1	47.5	51.7	46.8	47.2	39.0
07/02/2025	51.7	46.7	50.4	45.9	45.7	39.0
08/02/2025	48.9	43.9	47.5	43.3	43.1	35.4
09/02/2025	52.2	43.1	51.6	41.5	43.5	38.0
10/02/2025	50.9	45.4	49.4	44.6	45.7	37.7
11/02/2025	48.7	44.4	46.1	43.1	45.3	38.5
12/02/2025	51.7	45.3	51.1	44.6	43.1	36.9
13/02/2025	53.3	46.5	52.8	45.9	44.1	37.4
14/02/2025	53.1	47.9	52.0	47.5	46.3	37.2
15/02/2025	51.6	45.8	51.0	45.2	42.8	36.9
16/02/2025	50.9	46.5	49.9	46.0	43.8	37.6
17/02/2025	50.2	43.8	48.8	42.7	44.6	37.3
18/02/2025	51.2	44.6	50.1	43.7	44.8	37.5
19/02/2025	48.7	44.9	46.7	43.5	44.4	39.1
20/02/2025	51.3	46.5	50.2	45.4	44.7	39.8
21/02/2025	52.1	46.1	51.1	45.5	45.0	37.6
22/02/2025	49.7	41.1	48.3	39.8	44.2	35.4
23/02/2025	54.6	48.0	54.3	47.7	43.5	36.8
24/02/2025	54.7	47.4	54.1	46.7	45.8	39.2
25/02/2025	52.1	45.6	51.1	44.7	45.2	38.2
26/02/2025	52.8	46.8	52.3	46.4	43.2	35.9
27/02/2025	53.9	47.2	53.3	47.0	44.9	34.9
28/02/2025	54.4	48.1	54.0	47.8	43.9	36.2
Sum	52.3	46.0	51.3	45.3	45.2	37.5

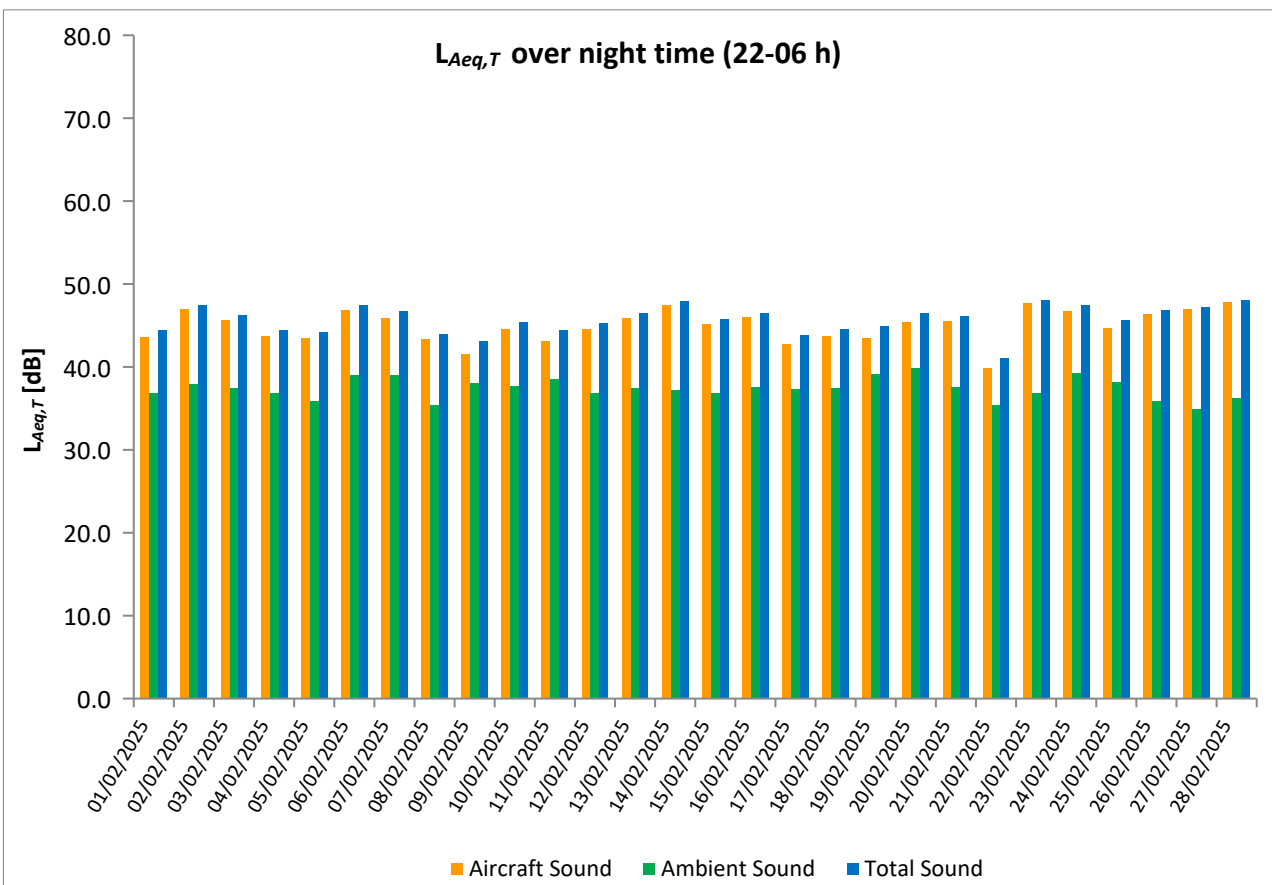
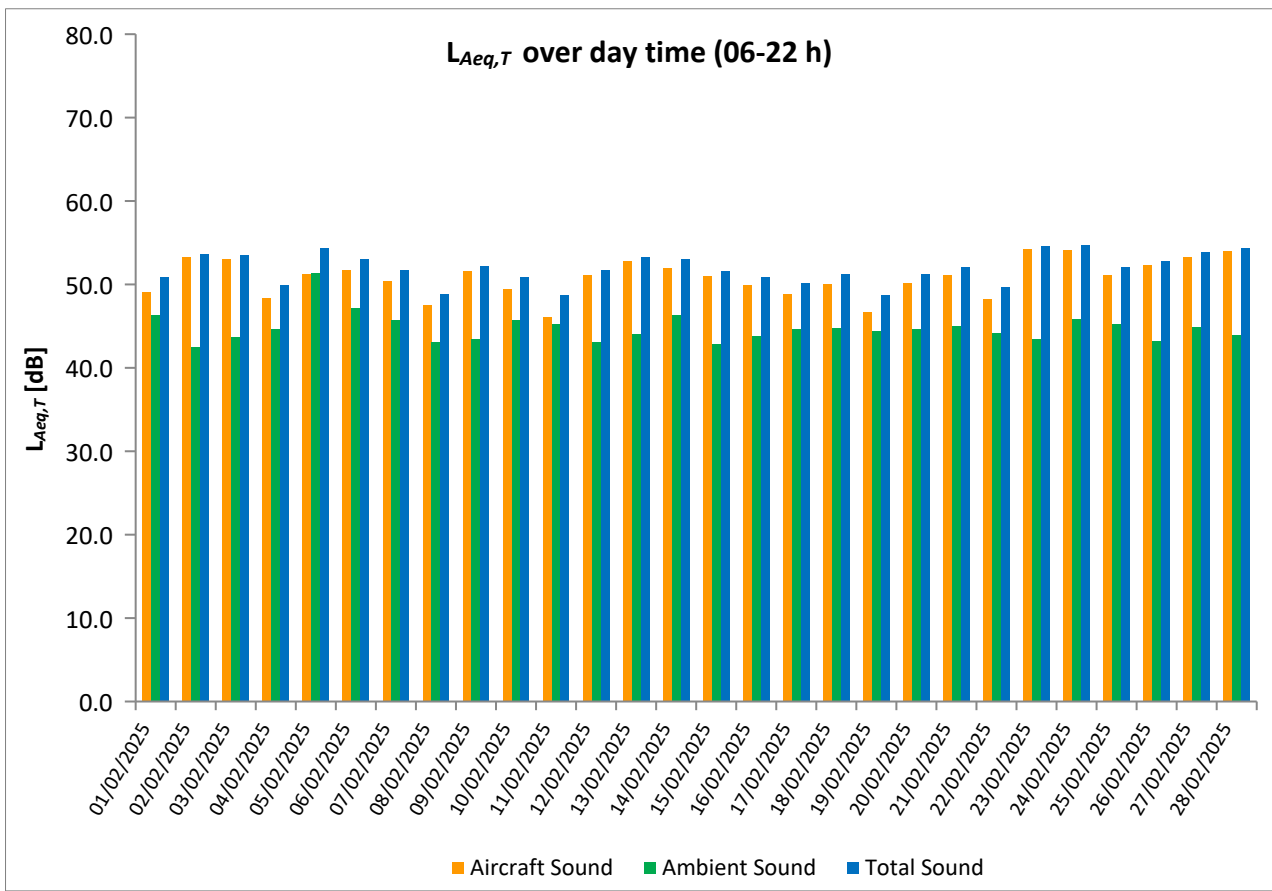
\* Availability < 50%

\*\* One or more events measured at wind speed above 5 m/s, not included into calculation

# Equivalent Continuous Sound Pressure Level

## MP03 Unhošť

February 2025



# Equivalent Continuous Sound Pressure Level

## MP04 Pavlov

### February 2025



	Total Sound [dB]		Aircraft Sound [dB]		Ambient Sound [dB]	
	L <sub>Aeq,T</sub> DAY	L <sub>Aeq,T</sub> NIGHT	L <sub>Aeq,T</sub> DAY	L <sub>Aeq,T</sub> NIGHT	L <sub>Aeq,T</sub> DAY	L <sub>Aeq,T</sub> NIGHT
01/02/2025	54.6	47.4	49.0	44.6	53.3	44.1
02/02/2025	55.2	49.3	54.6	48.3	46.5	42.3
03/02/2025	55.5	49.0	54.3	46.7	49.3	45.2
04/02/2025	53.2	49.1	50.4	45.6	49.9	46.5
05/02/2025	54.5	48.3	52.2	45.6	50.7	44.9
06/02/2025	54.9	49.6	52.0	47.6	51.8	45.1
07/02/2025	53.3	47.7	47.6	42.9	52.0	45.9
08/02/2025	49.1	44.7	44.7	41.9	47.2	41.4
09/02/2025	58.0	45.0	51.7	40.1	56.9	43.3
10/02/2025	54.3	49.5	47.9	44.6	53.1	47.8
11/02/2025	52.2	48.2	42.7	40.5	51.7	47.4
12/02/2025	53.3	48.0	51.4	45.3	48.7	44.6
13/02/2025	54.8	48.3	53.7	47.2	48.4	41.8
14/02/2025	55.3	49.7	53.4	48.5	50.9	43.4
15/02/2025	54.5	47.5	52.1	46.2	51.0	41.6
16/02/2025	52.9	47.8	49.6	45.3	50.1	44.3
17/02/2025	52.9	47.7	47.8	42.2	51.3	46.3
18/02/2025	53.7	48.3	51.1	44.6	50.2	45.9
19/02/2025	52.5	47.7	45.5	44.0	51.5	45.3
20/02/2025	53.7	49.5	51.5	46.6	49.7	46.5
21/02/2025	54.3	48.8	51.2	45.2	51.4	46.2
22/02/2025	51.1	44.8	46.6	39.1	49.2	43.4
23/02/2025	57.3	49.4	54.9	48.6	53.7	41.5
24/02/2025	56.8	50.1	55.3	48.1	51.6	45.7
25/02/2025	55.1	48.7	51.5	44.1	52.7	46.8
26/02/2025	54.9	48.6	53.5	46.7	49.5	44.1
27/02/2025	55.6	49.0	54.5	47.8	49.4	42.9
28/02/2025	56.1	50.2	54.9	48.8	49.9	44.5
Sum	54.6	48.5	51.9	45.9	51.3	45.0

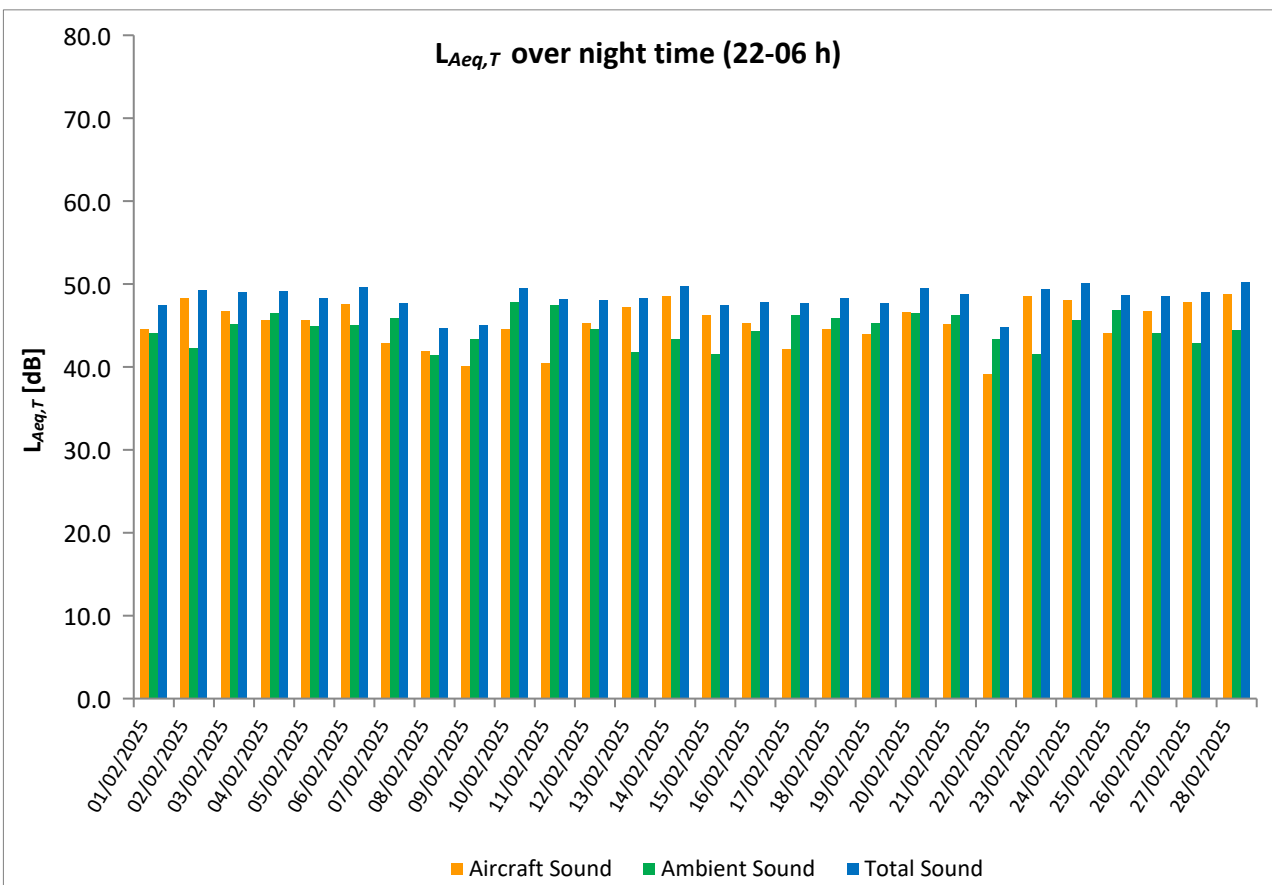
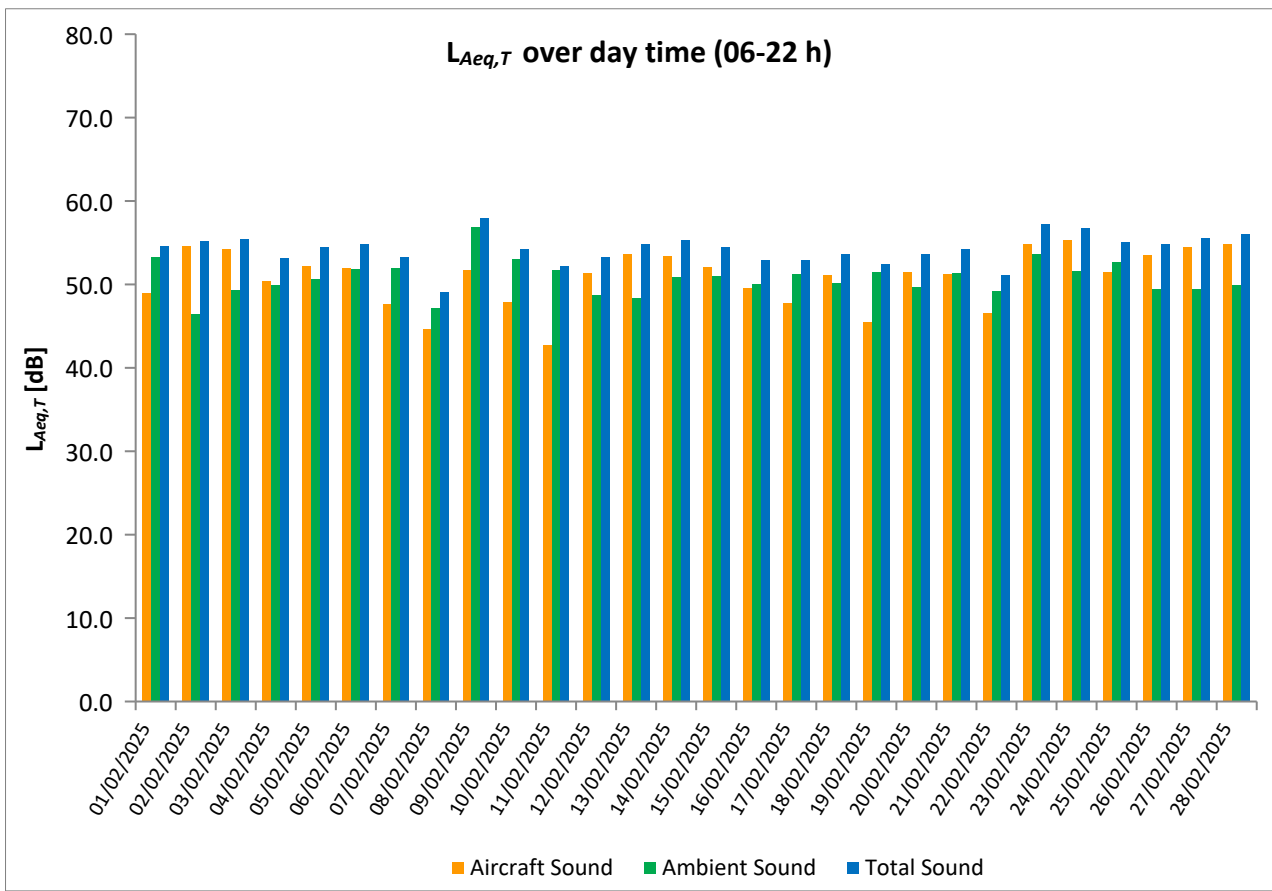
\* Availability < 50%

\*\* One or more events measured at wind speed above 5 m/s, not included into calculation

# Equivalent Continuous Sound Pressure Level

## MP04 Pavlov

### February 2025





# Equivalent Continuous Sound Pressure Level

## MP05 Hostivice

### February 2025



	Total Sound [dB]		Aircraft Sound [dB]		Ambient Sound [dB]	
	L <sub>Aeq,T</sub> DAY	L <sub>Aeq,T</sub> NIGHT	L <sub>Aeq,T</sub> DAY	L <sub>Aeq,T</sub> NIGHT	L <sub>Aeq,T</sub> DAY	L <sub>Aeq,T</sub> NIGHT
01/02/2025	45.6	40.2	40.0	34.6	44.3	38.7
02/02/2025	47.1	39.8	45.3	37.1	42.4	36.5
03/02/2025	48.3	40.4	45.0	36.0	45.5	38.4
04/02/2025	48.4	41.3	41.5	34.8	47.4	40.2
05/02/2025	49.8	41.8	43.6	36.5	48.7	40.3
06/02/2025	49.4	41.6	43.2	34.8	48.2	40.6
07/02/2025	48.1	40.6	34.8	29.7	47.9	40.2
08/02/2025	44.7	35.1	31.7	22.9	44.4	34.8
09/02/2025	47.3	37.2	42.3	30.1	45.7	36.3
10/02/2025	47.1	39.8	36.4	32.1	46.7	39.0
11/02/2025	45.6	39.4	26.2	21.7	45.5	39.4
12/02/2025	46.8	40.4	41.9	37.1	45.2	37.7
13/02/2025	49.3	41.8	46.1	38.7	46.5	38.9
14/02/2025	50.2	44.1	46.3	40.2	47.9	41.8
15/02/2025	46.0	40.3	43.4	35.0	42.5	38.8
16/02/2025	48.2	39.4	41.4	34.1	47.2	37.9
17/02/2025	47.4	41.4	39.9	36.2	46.6	39.9
18/02/2025	47.4	40.7	42.1	34.2	45.9	39.6
19/02/2025	47.6	40.4	32.2	32.0	47.5	39.7
20/02/2025	47.0	41.0	42.7	37.3	45.0	38.6
21/02/2025	48.7	39.5	41.5	34.5	47.8	37.8
22/02/2025	46.3	37.8	34.4	25.2	46.0	37.5
23/02/2025	48.3	40.8	46.0	38.8	44.5	36.6
24/02/2025	49.0	43.1	44.8	37.3	46.9	41.7
25/02/2025	54.3	40.7	41.8	32.7	54.1	40.0
26/02/2025	48.9	39.6	45.0	36.8	46.6	36.4
27/02/2025	48.4	41.2	44.7	38.4	46.0	38.0
28/02/2025	49.2	42.3	45.9	37.7	46.6	40.5
Sum	48.5	40.7	42.9	35.7	47.1	39.1

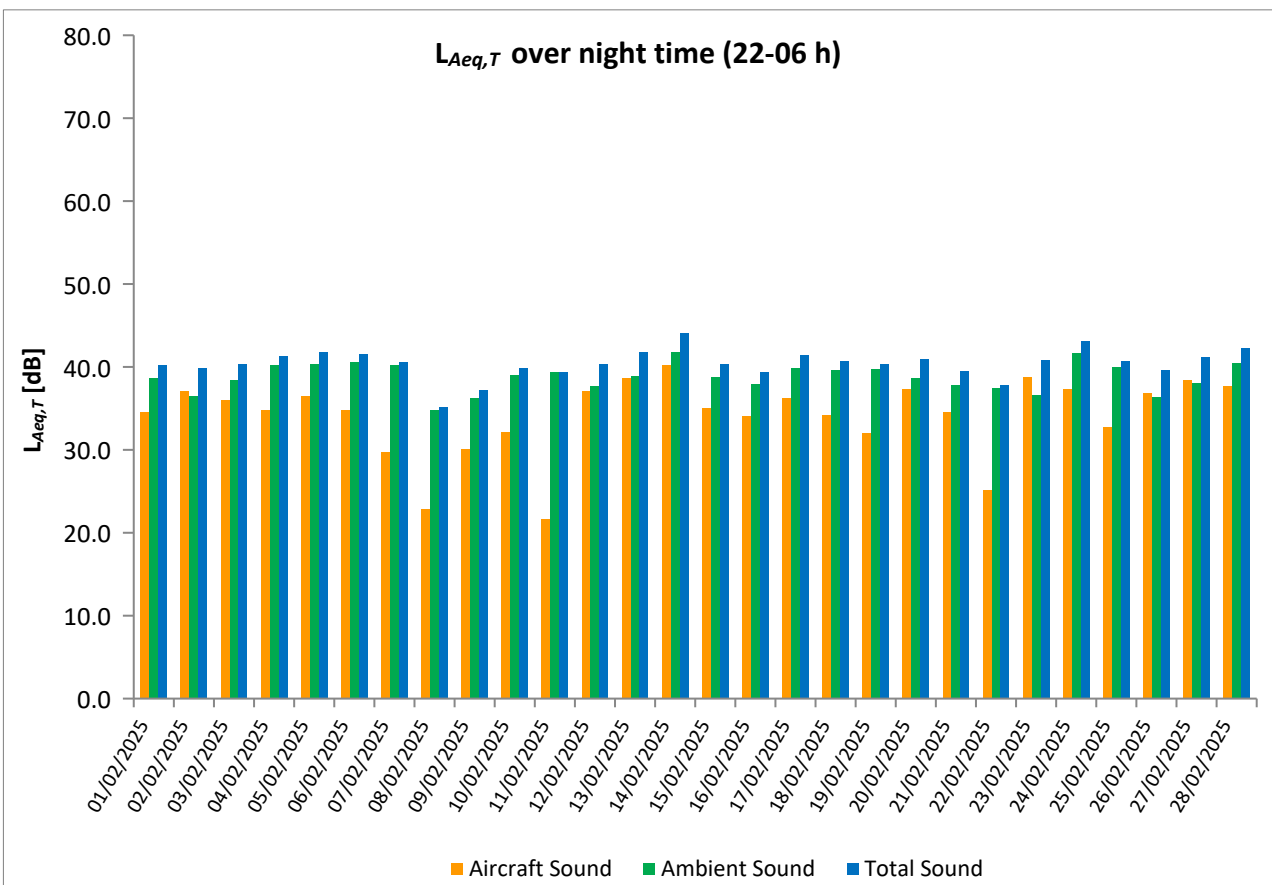
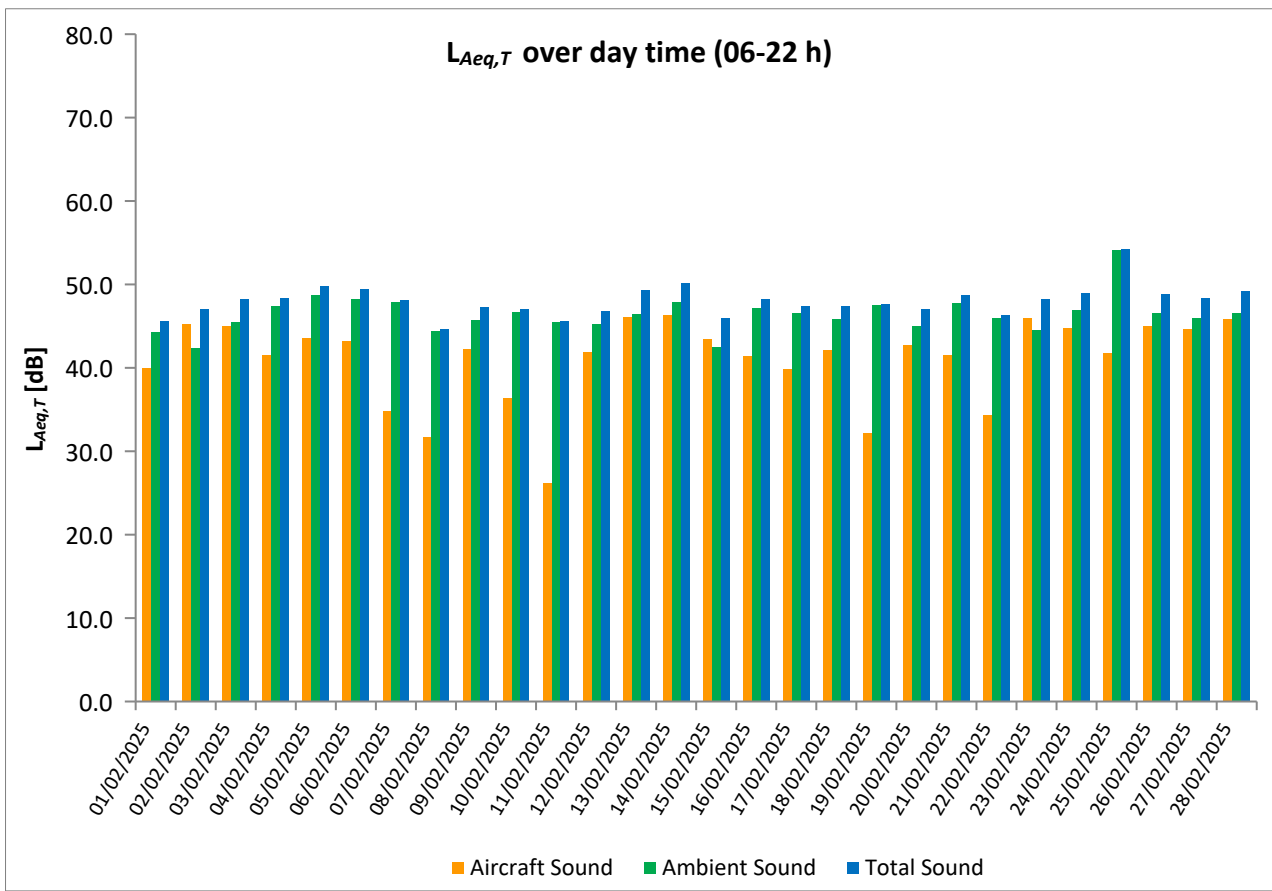
\* Availability < 50%

\*\* One or more events measured at wind speed above 5 m/s, not included into calculation

# Equivalent Continuous Sound Pressure Level

## MP05 Hostivice

February 2025



# Equivalent Continuous Sound Pressure Level

## MP06 Dobrovíz

### February 2025

	Total Sound [dB]		Aircraft Sound [dB]		Ambient Sound [dB]	
	L <sub>Aeq,T</sub> DAY	L <sub>Aeq,T</sub> NIGHT	L <sub>Aeq,T</sub> DAY	L <sub>Aeq,T</sub> NIGHT	L <sub>Aeq,T</sub> DAY	L <sub>Aeq,T</sub> NIGHT
01/02/2025	51.0	45.0	48.6	42.1	47.4	41.9
02/02/2025	54.3	46.9	53.4	45.5	46.9	41.3
03/02/2025	54.3	47.3	53.0	45.6	48.4	42.4
04/02/2025	53.8	46.2	52.4	44.3	48.2	41.9
05/02/2025	61.1	45.1	51.9	43.1	60.6	40.9
06/02/2025	53.8	46.8	52.2	44.7	48.6	42.6
07/02/2025	54.8	48.8	51.8	46.3	51.7	45.2
08/02/2025	52.1	45.9	50.4	43.8	47.2	41.7
09/02/2025	54.1	49.1	52.9	47.8	48.1	43.1
10/02/2025	56.9	48.5	55.5	46.4	51.3	44.4
11/02/2025	55.0	48.5	52.9	45.7	50.8	45.2
12/02/2025	54.3	49.1	52.4	47.0	49.7	44.9
13/02/2025	54.8	48.7	53.7	46.5	48.3	44.8
14/02/2025	54.2	49.0	53.4	47.2	46.1	44.3
15/02/2025	51.7	47.1	50.8	44.9	44.3	43.2
16/02/2025	54.7	51.7	52.8	50.3	50.2	46.1
17/02/2025	56.0	50.0	53.9	47.8	51.8	45.9
18/02/2025	52.8	47.5	51.0	45.3	48.2	43.4
19/02/2025	56.6	46.7	54.5	43.5	52.6	43.8
20/02/2025	54.6	51.1	52.7	49.7	50.0	45.7
21/02/2025	58.4	50.4	57.6	48.8	50.7	45.4
22/02/2025	53.4	48.0	51.7	43.6	48.5	46.1
23/02/2025	55.3	46.8	54.3	45.7	48.3	40.2
24/02/2025	55.4	47.8	53.8	45.6	50.4	43.7
25/02/2025	55.5	49.0	53.6	46.6	50.9	45.2
26/02/2025	55.0	47.1	54.3	45.7	46.4	41.8
27/02/2025	54.0	46.7	53.2	45.7	46.3	39.9
28/02/2025	56.2	45.8	55.4	44.0	48.3	41.0
Sum	55.3	48.2	53.4	46.3	50.9	43.8

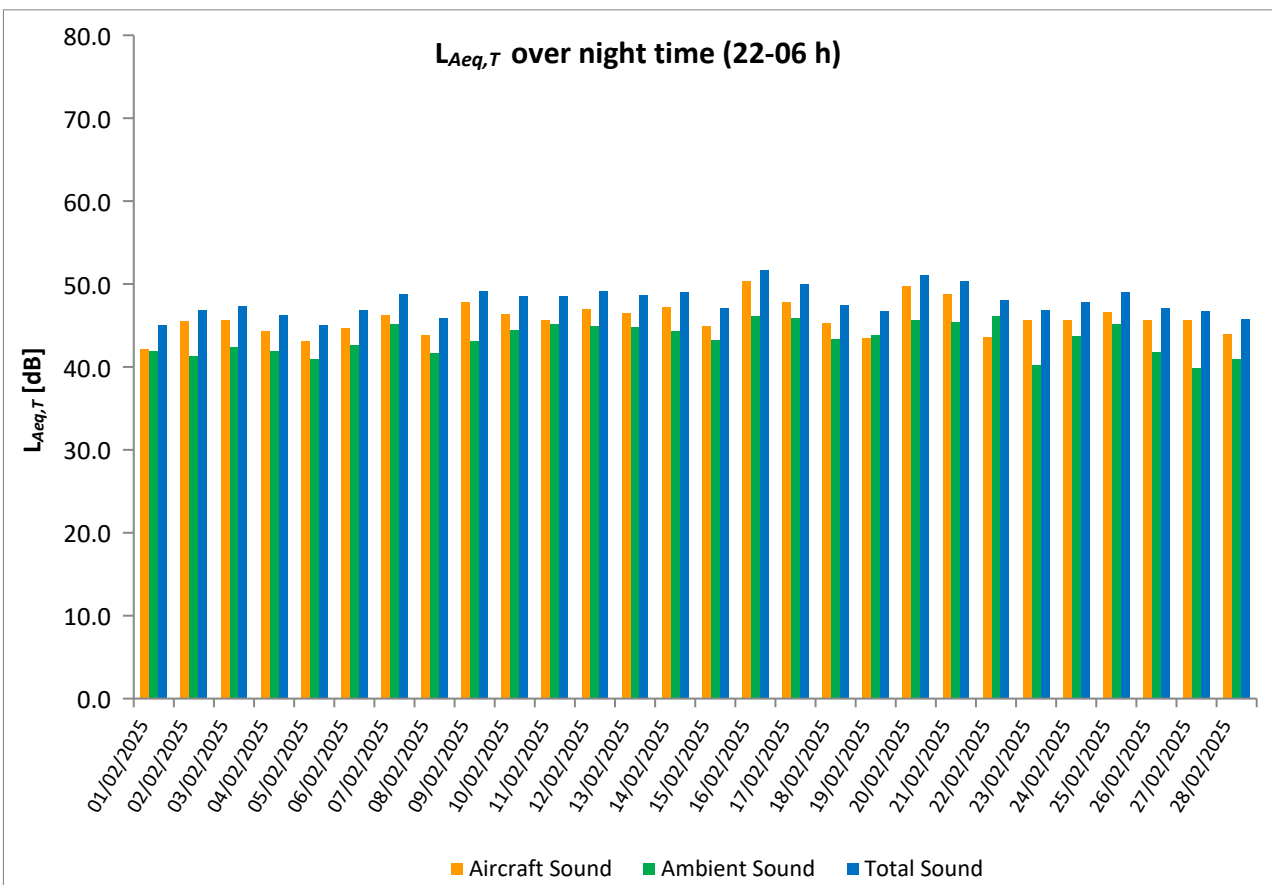
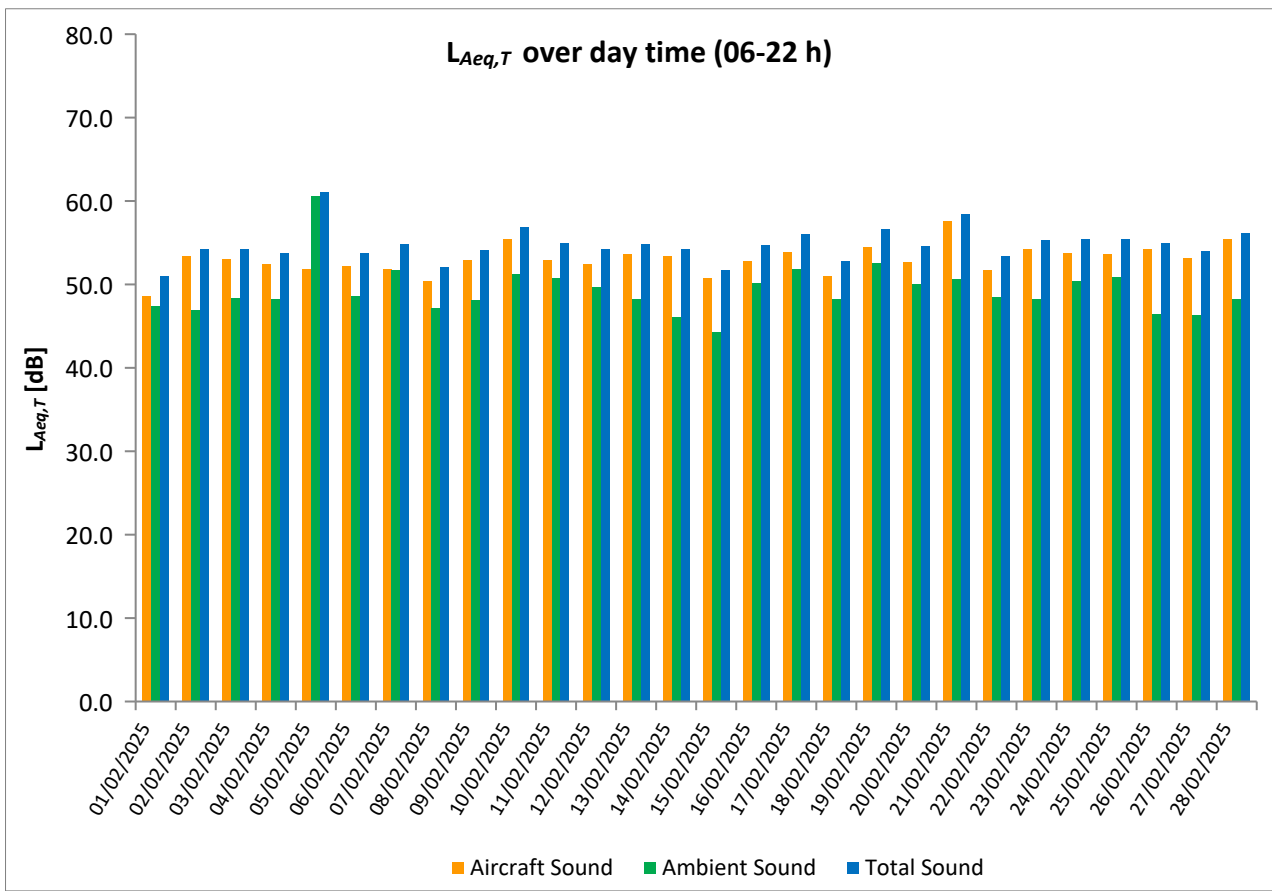
\* Availability < 50%

\*\* One or more events measured at wind speed above 5 m/s, not included into calculation

# Equivalent Continuous Sound Pressure Level

## MP06 Dobrovíz

February 2025



# Equivalent Continuous Sound Pressure Level

## MP07 Kněževés

### February 2025

	Total Sound [dB]		Aircraft Sound [dB]		Ambient Sound [dB]	
	L <sub>Aeq,T</sub> DAY	L <sub>Aeq,T</sub> NIGHT	L <sub>Aeq,T</sub> DAY	L <sub>Aeq,T</sub> NIGHT	L <sub>Aeq,T</sub> DAY	L <sub>Aeq,T</sub> NIGHT
01/02/2025	54.8	45.4	53.0	42.7	50.1	42.0
02/02/2025	54.3	49.5	52.3	47.5	50.1	45.2
03/02/2025	57.5	53.8	56.0	51.4	52.1	50.1
04/02/2025	54.8	50.1	52.0	48.1	51.6	45.7
05/02/2025	54.6	49.2	51.4	46.3	51.7	46.0
06/02/2025	53.2	49.2	51.2	46.6	48.9	45.7
07/02/2025	58.1	50.0	56.9**	47.0	51.9	47.0
08/02/2025	55.8	49.4	54.3	45.5	50.6	47.1
09/02/2025	57.1	50.9	55.6	47.5	51.7	48.2
10/02/2025	59.6	52.2	57.1	47.0	56.0	50.7
11/02/2025	56.2	52.4	53.6	49.0	52.8	49.8
12/02/2025	58.9	54.8	57.3	52.3	53.7	51.1
13/02/2025	55.8	52.8	53.6	49.6	51.9	49.9
14/02/2025	51.9	45.2	46.8	43.3	50.3	40.6
15/02/2025	52.9	44.6	51.4	41.0	47.5	42.1
16/02/2025	55.9	50.6	54.9	47.9	49.2	47.3
17/02/2025	57.5	48.5	56.1	45.4	51.9	45.6
18/02/2025	52.4	48.5	50.1	46.1	48.6	44.8
19/02/2025	57.1	52.3	54.7	47.4	53.3	50.7
20/02/2025	57.8	51.4	56.0	47.4	53.1	49.2
21/02/2025	58.2	53.4	57.0	51.2	52.0	49.3
22/02/2025	55.4	50.4	53.4	45.6	50.9	48.7
23/02/2025	60.6	55.2	59.7	54.1	53.4	48.6
24/02/2025	59.1	56.4	57.4	55.0	54.3	50.8
25/02/2025	58.6	55.1	56.9	53.1	53.6	50.7
26/02/2025	55.1	51.3	53.7	49.4	49.4	46.9
27/02/2025	55.3	49.0	53.9**	47.5	49.7	43.5
28/02/2025	55.2	48.5	53.8	47.0	49.5	43.3
Sum	56.8	51.7	55.0	49.2	51.9	48.0

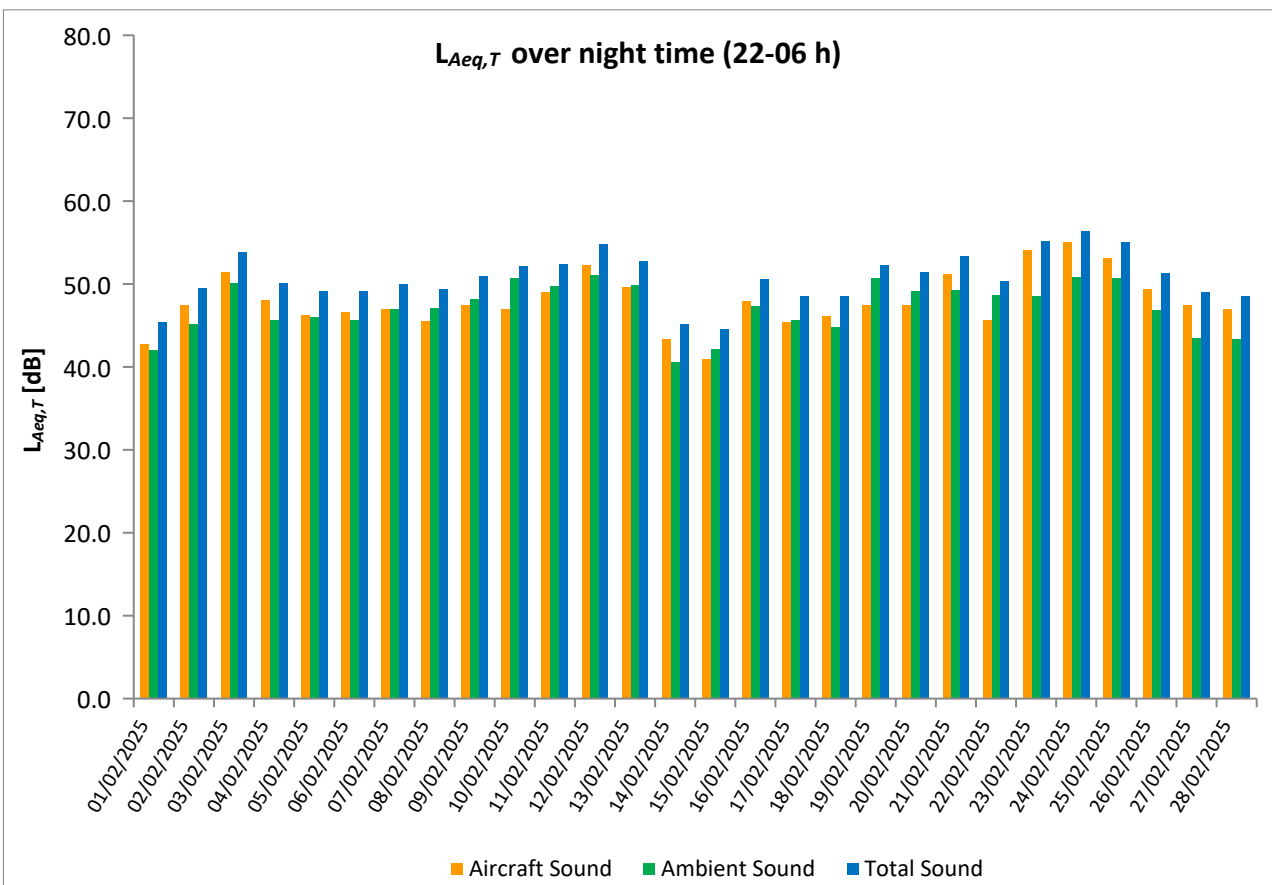
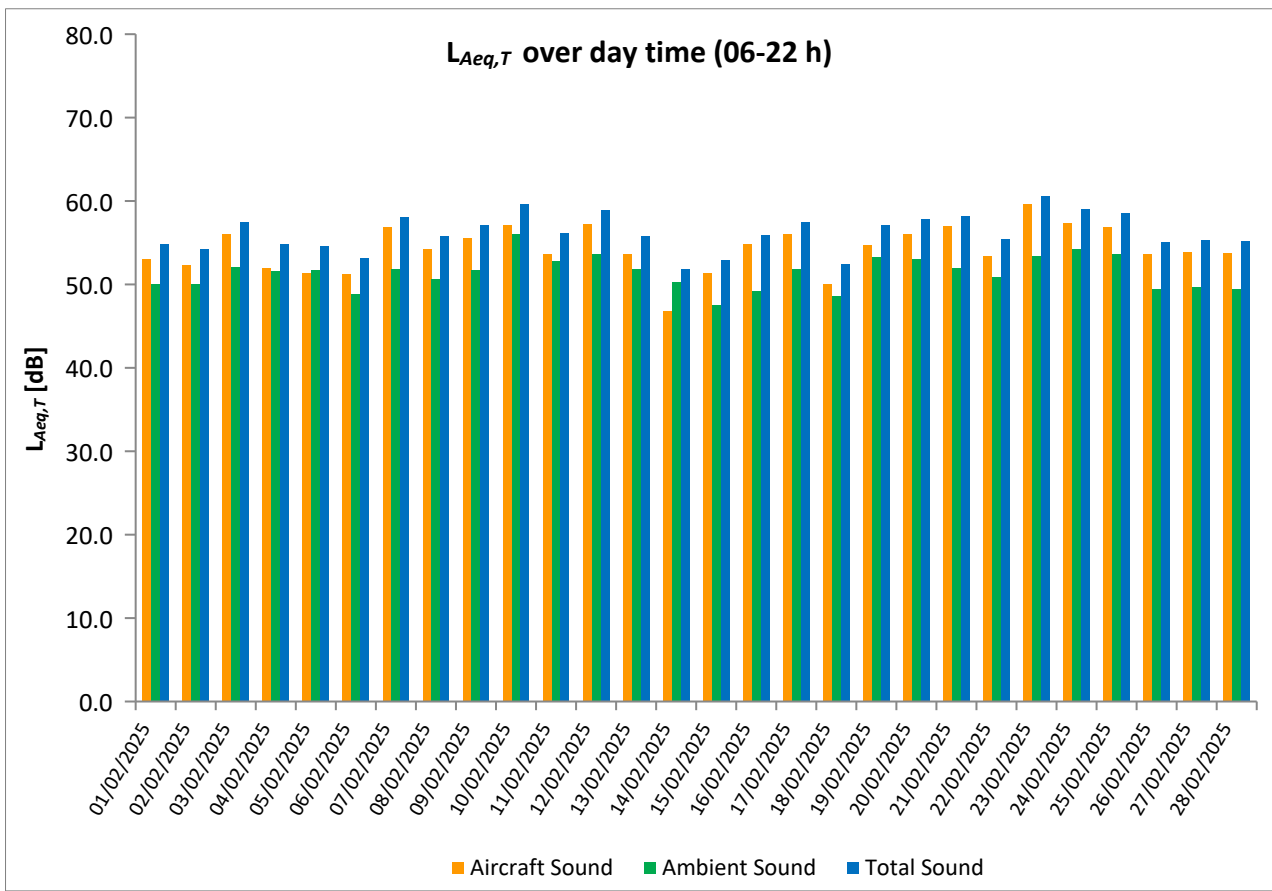
\* Availability < 50%

\*\* One or more events measured at wind speed above 5 m/s, not included into calculation

# Equivalent Continuous Sound Pressure Level

## MP07 Kněžves

February 2025



## Equivalent Continuous Sound Pressure Level

### MP08 Horoměřice střed

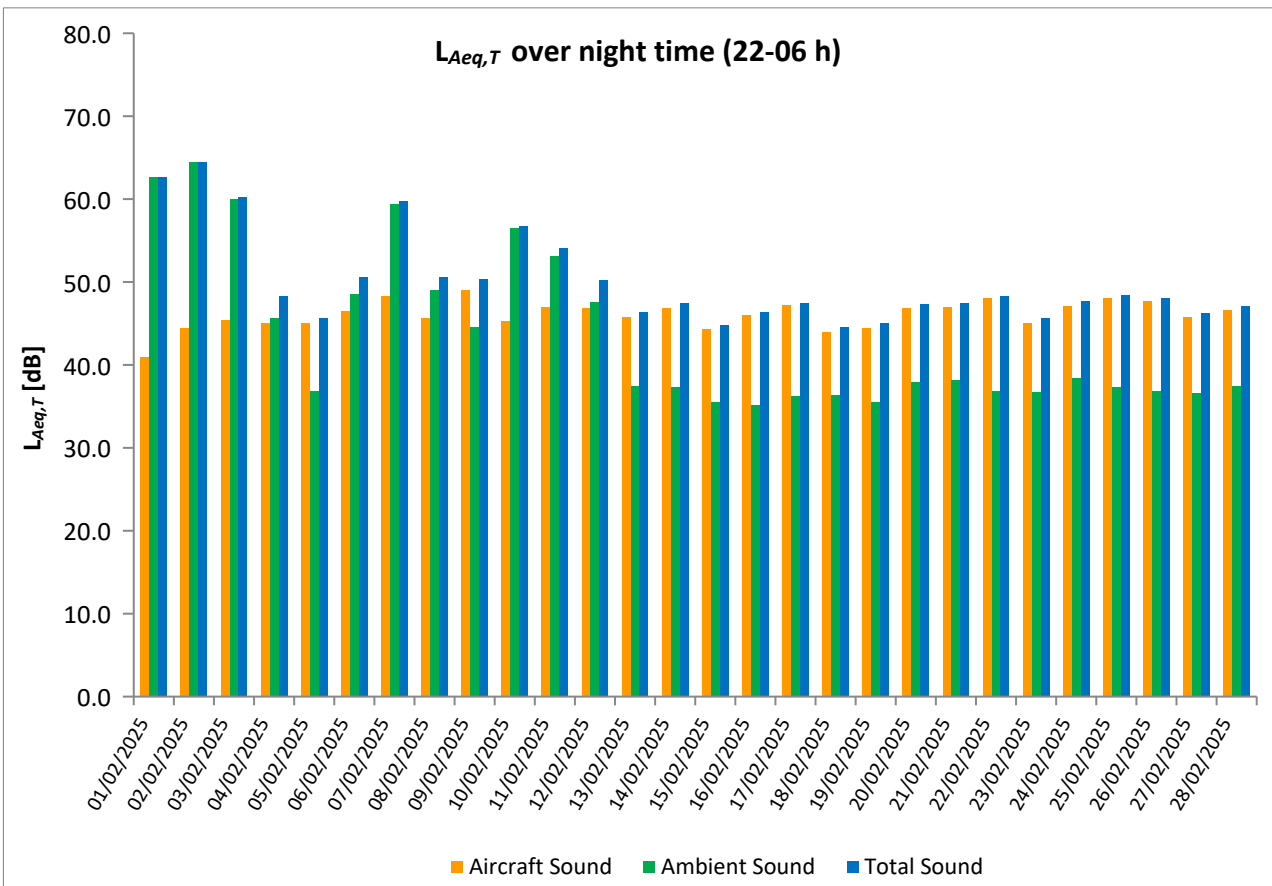
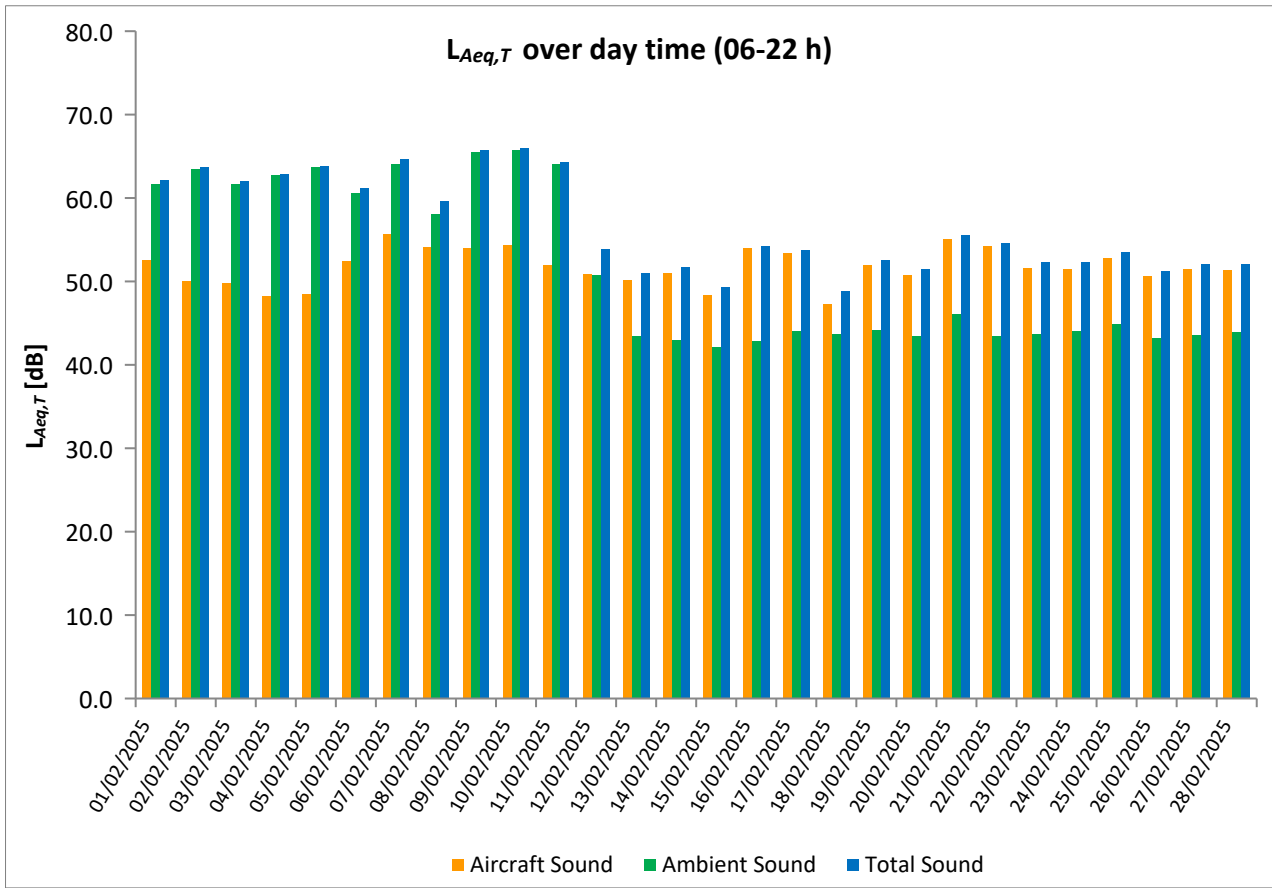
February 2025

	Total Sound [dB]		Aircraft Sound [dB]		Ambient Sound [dB]	
	L <sub>Aeq,T</sub> DAY	L <sub>Aeq,T</sub> NIGHT	L <sub>Aeq,T</sub> DAY	L <sub>Aeq,T</sub> NIGHT	L <sub>Aeq,T</sub> DAY	L <sub>Aeq,T</sub> NIGHT
01/02/2025	62.2	62.6	52.6	41.0	61.7	62.6
02/02/2025	63.7	64.5	50.0	44.4	63.5	64.5
03/02/2025	62.0	60.2	49.8	45.4	61.7	60.0
04/02/2025	62.9	48.3	48.2	45.0	62.8	45.6
05/02/2025	63.8	45.7	48.5	45.1	63.7	36.8
06/02/2025	61.2	50.6	52.5	46.5	60.6	48.5
07/02/2025	64.7	59.7	55.7	48.3	64.1	59.4
08/02/2025	59.6	50.6	54.1	45.6	58.1	49.0
09/02/2025	65.8	50.3	54.0	49.0	65.5	44.6
10/02/2025	66.0	56.8	54.4	45.3	65.7	56.5
11/02/2025	64.3	54.1	52.0	47.0	64.1	53.1
12/02/2025	53.9	50.2	50.9	46.8	50.8	47.6
13/02/2025	51.0	46.4	50.2	45.8	43.4	37.4
14/02/2025	51.7	47.4	51.0	46.9	43.0	37.3
15/02/2025	49.3	44.8	48.4	44.3	42.1	35.5
16/02/2025	54.3	46.4	54.0	46.0	42.8	35.2
17/02/2025	53.8	47.5	53.4	47.2	44.0	36.3
18/02/2025	48.9	44.6	47.3	43.9	43.7	36.4
19/02/2025	52.6	45.0	52.0	44.5	44.2	35.5
20/02/2025	51.5	47.3	50.8	46.8	43.4	37.9
21/02/2025	55.6	47.5	55.1	47.0	46.1	38.2
22/02/2025	54.6	48.3	54.2	48.0	43.4	36.8
23/02/2025	52.3	45.7	51.6	45.1	43.7	36.7
24/02/2025	52.3	47.7	51.5	47.1	44.1	38.4
25/02/2025	53.5	48.4	52.8	48.1	44.9	37.3
26/02/2025	51.3	48.0	50.6	47.7	43.2	36.8
27/02/2025	52.1	46.3	51.5	45.8	43.6	36.6
28/02/2025	52.1	47.1	51.4	46.6	43.9	37.4
Sum	60.1	54.9	52.3	46.4	59.3	54.3

\* Availability < 50%

\*\* One or more events measured at wind speed above 5 m/s, not included into calculation

Equivalent Continuous Sound Pressure Level  
**MP08 Horoměřice střed**  
**February 2025**





## Equivalent Continuous Sound Pressure Level

### MP09 Praha - Přední Kopanina

February 2025

	Total Sound [dB]		Aircraft Sound [dB]		Ambient Sound [dB]	
	L <sub>Aeq,T</sub> DAY	L <sub>Aeq,T</sub> NIGHT	L <sub>Aeq,T</sub> DAY	L <sub>Aeq,T</sub> NIGHT	L <sub>Aeq,T</sub> DAY	L <sub>Aeq,T</sub> NIGHT
01/02/2025	56.4	42.5	55.8	38.4	47.2	40.5
02/02/2025	50.2	43.7	47.9	41.1	46.4	40.3
03/02/2025	54.2	46.5	47.4	43.3	53.1	43.8
04/02/2025	53.1	47.7	45.1	43.0	52.3	45.8
05/02/2025	68.4	47.1	47.0	42.9	68.4	45.0
06/02/2025	57.1	50.6	55.9	50.0	51.1	41.3
07/02/2025	59.9	51.9	59.4	51.6	50.1	40.1
08/02/2025	58.2	49.0	57.8	48.0	47.2	41.9
09/02/2025	57.3	51.4	56.9	50.6	47.4	43.7
10/02/2025	59.5	48.5	58.3	47.1	53.4	42.9
11/02/2025	56.8	50.7	55.7	50.0	50.4	42.4
12/02/2025	54.8	48.0	52.7	46.4	50.7	42.9
13/02/2025	53.9	46.8	48.5	43.1	52.4	44.3
14/02/2025	53.3	47.5	48.3	44.7	51.6	44.4
15/02/2025	50.1	44.5	46.4	40.6	47.7	42.3
16/02/2025	57.9	50.0	57.6	49.3	46.7	41.7
17/02/2025	57.5	50.0	56.9	49.4	49.1	41.1
18/02/2025	54.8	44.0	44.4	40.5	54.3	41.3
19/02/2025	57.1	47.8	55.9	46.4	51.1	42.0
20/02/2025	55.3	48.1	52.2	46.6	52.4	42.6
21/02/2025	58.7	49.4	57.6	48.2	52.3	43.1
22/02/2025	57.6	49.9	57.1	49.1	47.6	42.1
23/02/2025	54.3	48.4	51.2	45.2	51.3	45.6
24/02/2025	55.8	49.4	50.3	44.9	54.4	47.4
25/02/2025	59.4	51.6	55.2	50.1	57.3	46.2
26/02/2025	53.0	50.2	48.7	49.1	50.9	43.9
27/02/2025	54.6	48.0	49.2	44.1	53.1	45.6
28/02/2025	54.3	48.4	50.0	45.2	52.3	45.6
Sum	58.3	48.8	54.5	47.3	55.9	43.6

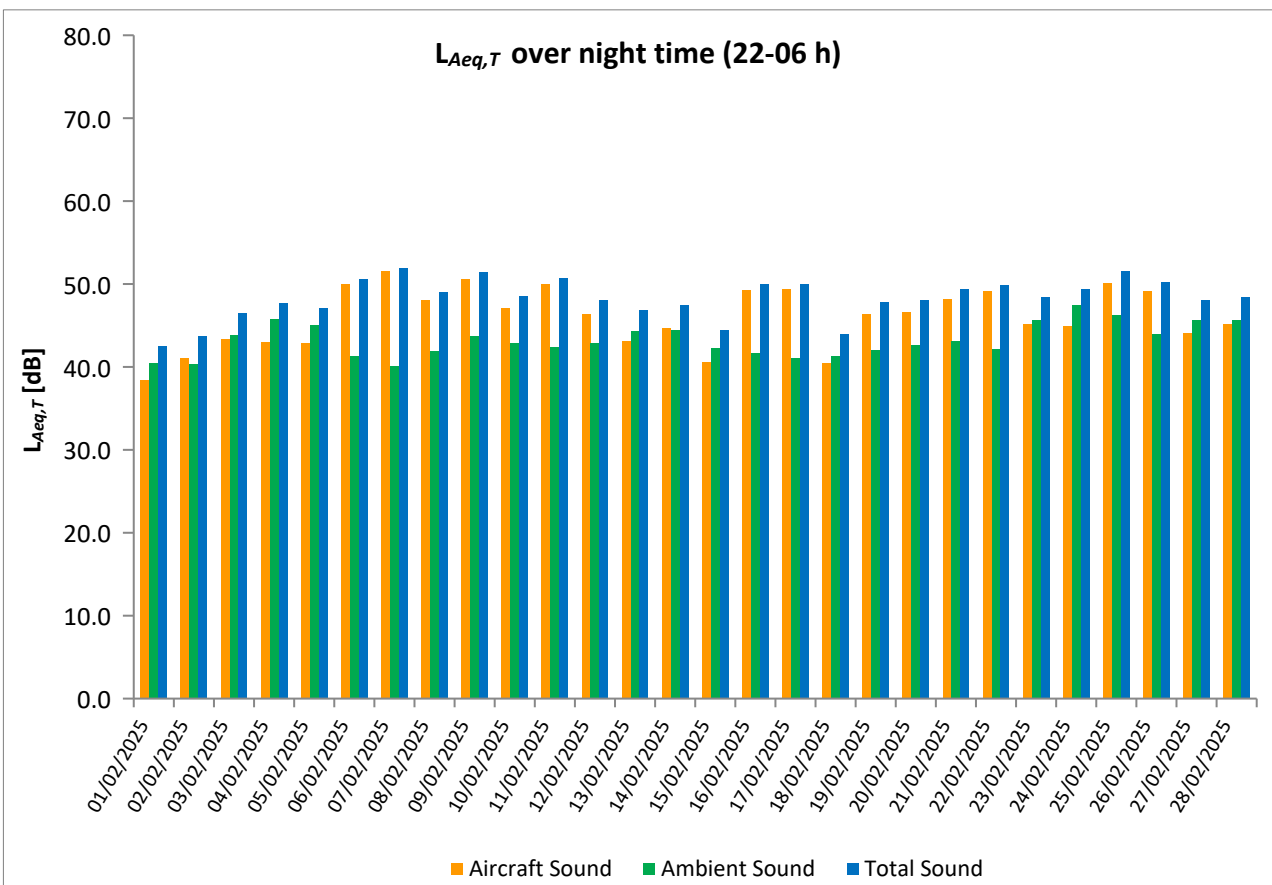
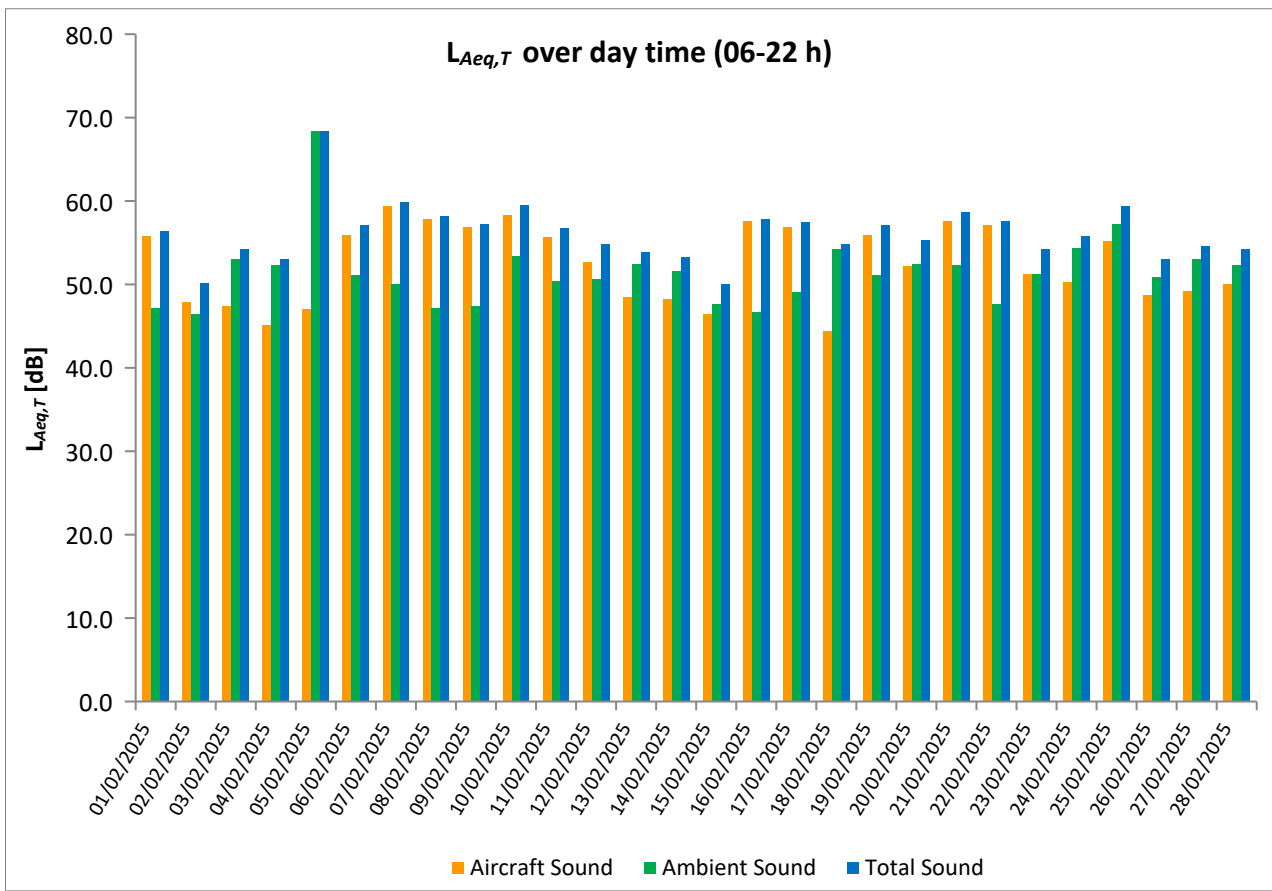
\* Availability < 50%

\*\* One or more events measured at wind speed above 5 m/s, not included into calculation

# Equivalent Continuous Sound Pressure Level

## MP09 Praha - Přední Kopanina

February 2025



## Equivalent Continuous Sound Pressure Level

### MP10 Horoměřice

February 2025

	Total Sound [dB]		Aircraft Sound [dB]		Ambient Sound [dB]	
	L <sub>Aeq,T</sub> DAY	L <sub>Aeq,T</sub> NIGHT	L <sub>Aeq,T</sub> DAY	L <sub>Aeq,T</sub> NIGHT	L <sub>Aeq,T</sub> DAY	L <sub>Aeq,T</sub> NIGHT
01/02/2025	53.6	39.4	51.8	37.5	48.9	35.0
02/02/2025	49.3	41.9	46.8	40.9	45.7	34.9
03/02/2025	50.5	43.0	46.3	42.0	48.4	36.4
04/02/2025	48.8	43.8	44.3	41.4	46.9	40.2
05/02/2025	50.4	42.8	45.3	42.0	48.9	35.0
06/02/2025	53.5	47.1	51.7	46.3	48.9	39.4
07/02/2025	55.8	47.8	55.0	47.5	47.8	35.9
08/02/2025	54.7	50.4	53.5	45.0	48.4	48.9
09/02/2025	54.3	48.1	53.4	47.8	46.9	36.5
10/02/2025	54.9	45.2	53.8	44.7	48.1	35.5
11/02/2025	53.6	47.1	51.4	46.5	49.6	38.2
12/02/2025	50.6	45.3	49.2	44.7	45.0	36.8
13/02/2025	48.9	43.5	46.5	41.9	45.3	38.4
14/02/2025	51.3	44.8	47.3	43.1	49.1	39.8
15/02/2025	49.6	42.0	44.5	40.6	48.0	36.4
16/02/2025	53.9	46.1	52.6	45.3	47.9	38.3
17/02/2025	53.0	46.0	52.1	45.5	45.7	36.1
18/02/2025	47.7	41.6	43.4	39.9	45.6	36.7
19/02/2025	52.6	43.1	50.5	42.5	48.5	33.8
20/02/2025	51.3	44.8	48.8	44.0	47.7	37.0
21/02/2025	55.0	46.4	54.0	45.9	48.4	36.8
22/02/2025	55.0	47.0	53.2	46.6	50.3	36.2
23/02/2025	50.6	42.8	48.4	41.8	46.5	35.7
24/02/2025	51.8	44.6	48.1	43.8	49.3	36.6
25/02/2025	53.1	47.7	51.7	47.3	47.4	36.3
26/02/2025	53.3	46.9	47.7	46.4	51.9	36.8
27/02/2025	50.9	43.4	48.1	42.3	47.7	36.8
28/02/2025	51.9	44.1	48.0	43.3	49.7	36.4
Sum	52.6	45.5	50.7	44.5	48.2	38.8

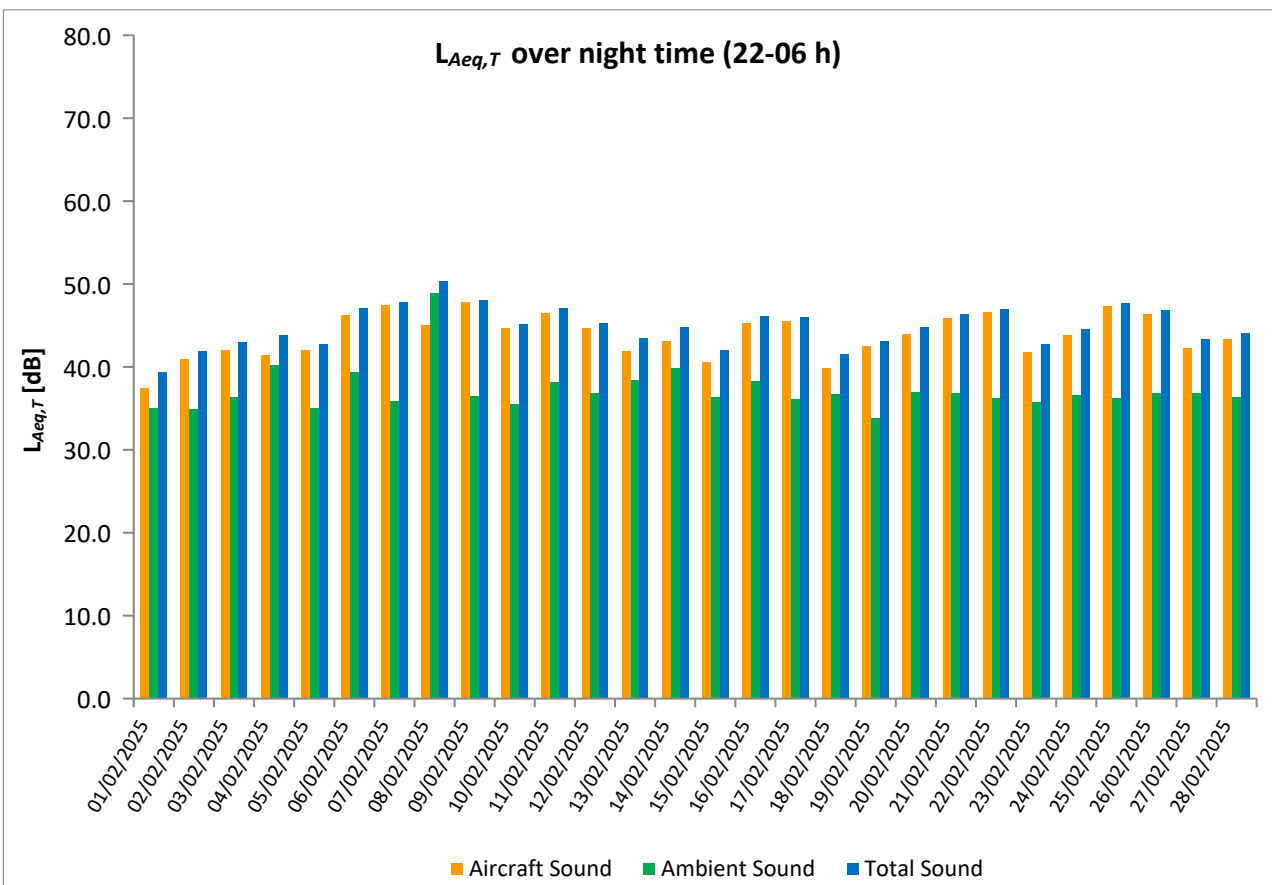
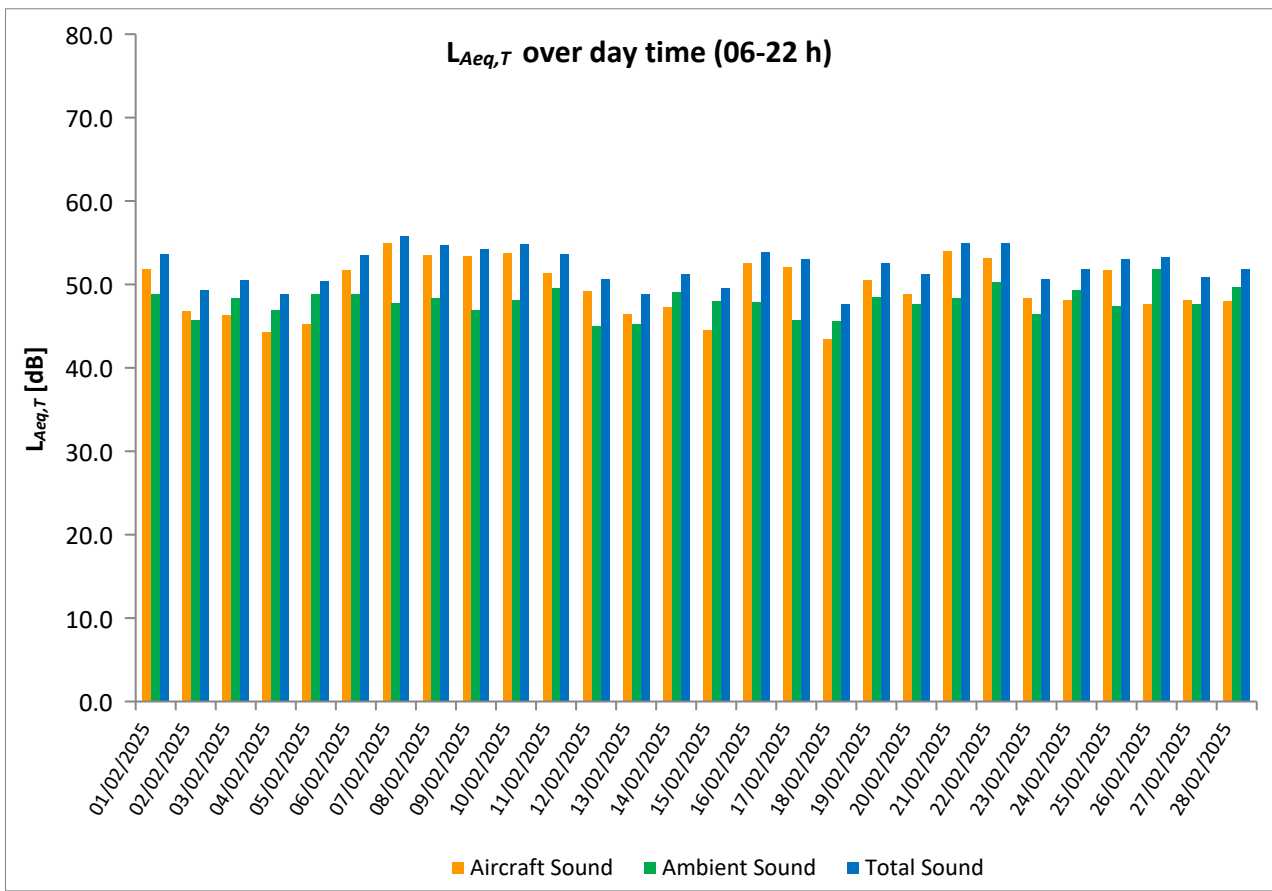
\* Availability < 50%

\*\* One or more events measured at wind speed above 5 m/s, not included into calculation

# Equivalent Continuous Sound Pressure Level

## MP10 Horoměřice

February 2025



# Equivalent Continuous Sound Pressure Level

## MP11 Rostoky

### February 2025

	Total Sound [dB]		Aircraft Sound [dB]		Ambient Sound [dB]	
	L <sub>Aeq,T</sub> DAY	L <sub>Aeq,T</sub> NIGHT	L <sub>Aeq,T</sub> DAY	L <sub>Aeq,T</sub> NIGHT	L <sub>Aeq,T</sub> DAY	L <sub>Aeq,T</sub> NIGHT
01/02/2025	52.5	43.5	51.0	41.3	47.1	39.5
02/02/2025	52.3	45.8	50.9	45.0	46.7	38.5
03/02/2025	51.9	47.3	50.7	46.6	45.6	39.0
04/02/2025	51.1	46.2	49.5	45.1	46.1	39.7
05/02/2025	53.8	45.9	49.8	45.0	51.5	38.8
06/02/2025	52.7	44.5	51.6	43.6	46.2	37.2
07/02/2025	54.1	46.4	53.0	45.5	47.4	39.5
08/02/2025	52.8	44.5	51.6	43.2	46.6	38.5
09/02/2025	53.9	48.1	52.7	47.3	47.7	40.5
10/02/2025	54.9	45.4	52.0	44.5	51.8	38.4
11/02/2025	52.2	45.9	49.4	44.6	49.0	40.0
12/02/2025	52.3	46.5	50.2	45.4	48.1	39.8
13/02/2025	52.1	46.3	50.8	45.1	46.3	40.4
14/02/2025	52.7	48.4	50.9	47.8	47.9	39.6
15/02/2025	52.0	45.3	48.9	44.3	49.1	38.0
16/02/2025	52.7	44.7	51.9	43.6	45.1	38.2
17/02/2025	54.2	46.3	51.0	45.4	51.3	38.7
18/02/2025	51.1	45.3	47.4	44.2	48.6	39.1
19/02/2025	51.0	43.7	49.1	41.3	46.6	39.8
20/02/2025	52.3	47.1	50.5	46.1	47.6	40.0
21/02/2025	54.4	46.8	53.4	46.0	47.3	38.9
22/02/2025	53.2	47.4	52.0	46.7	47.1	39.3
23/02/2025	52.8	46.4	52.0	45.7	44.8	38.3
24/02/2025	53.1	47.4	51.6	46.5	47.6	39.8
25/02/2025	53.0	47.0	51.6	46.2	47.6	39.1
26/02/2025	54.3	47.4	50.9	46.7	51.7	39.1
27/02/2025	55.8	46.5	51.4	45.6	53.8	39.1
28/02/2025	53.7	47.3	51.5	46.6	49.6	39.0
Sum	53.1	46.4	51.2	45.4	48.7	39.2

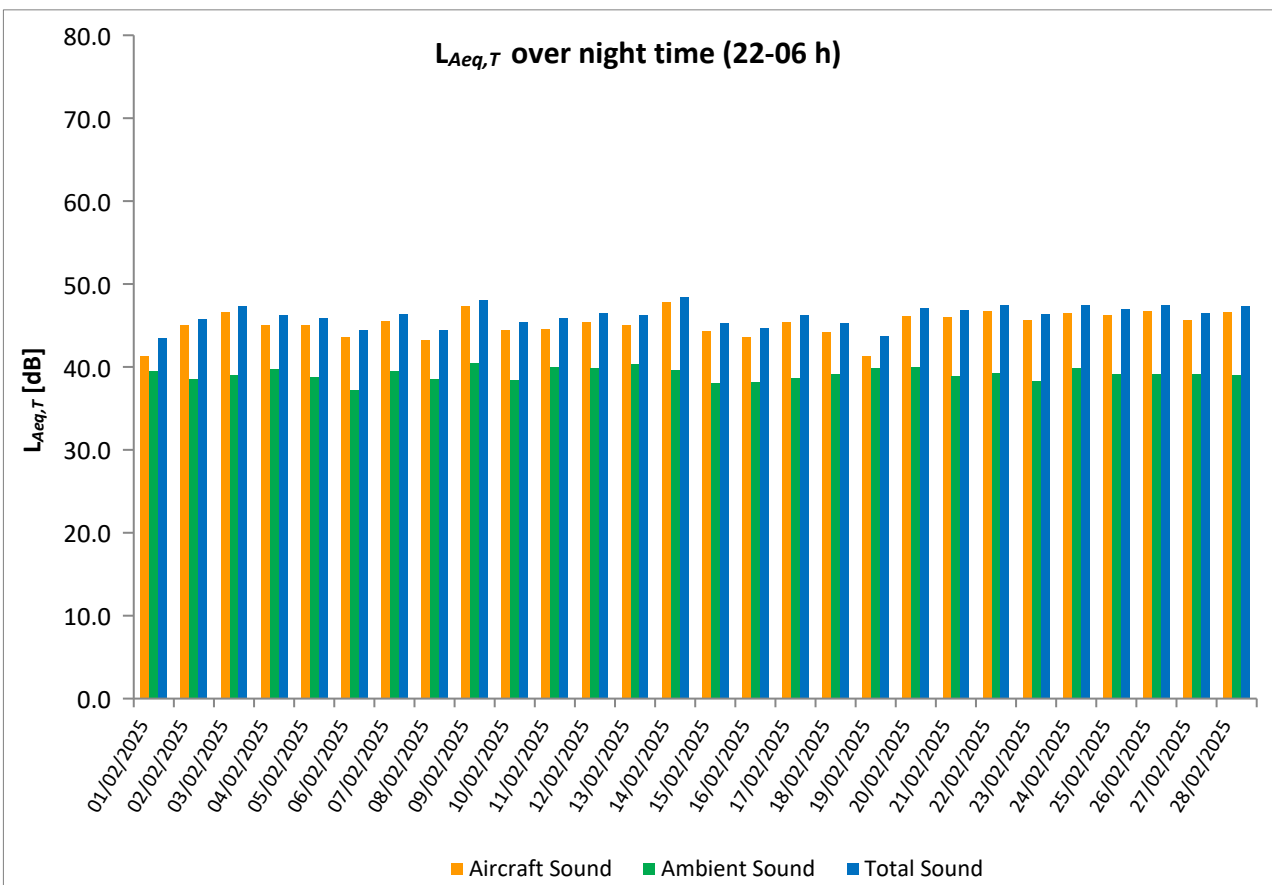
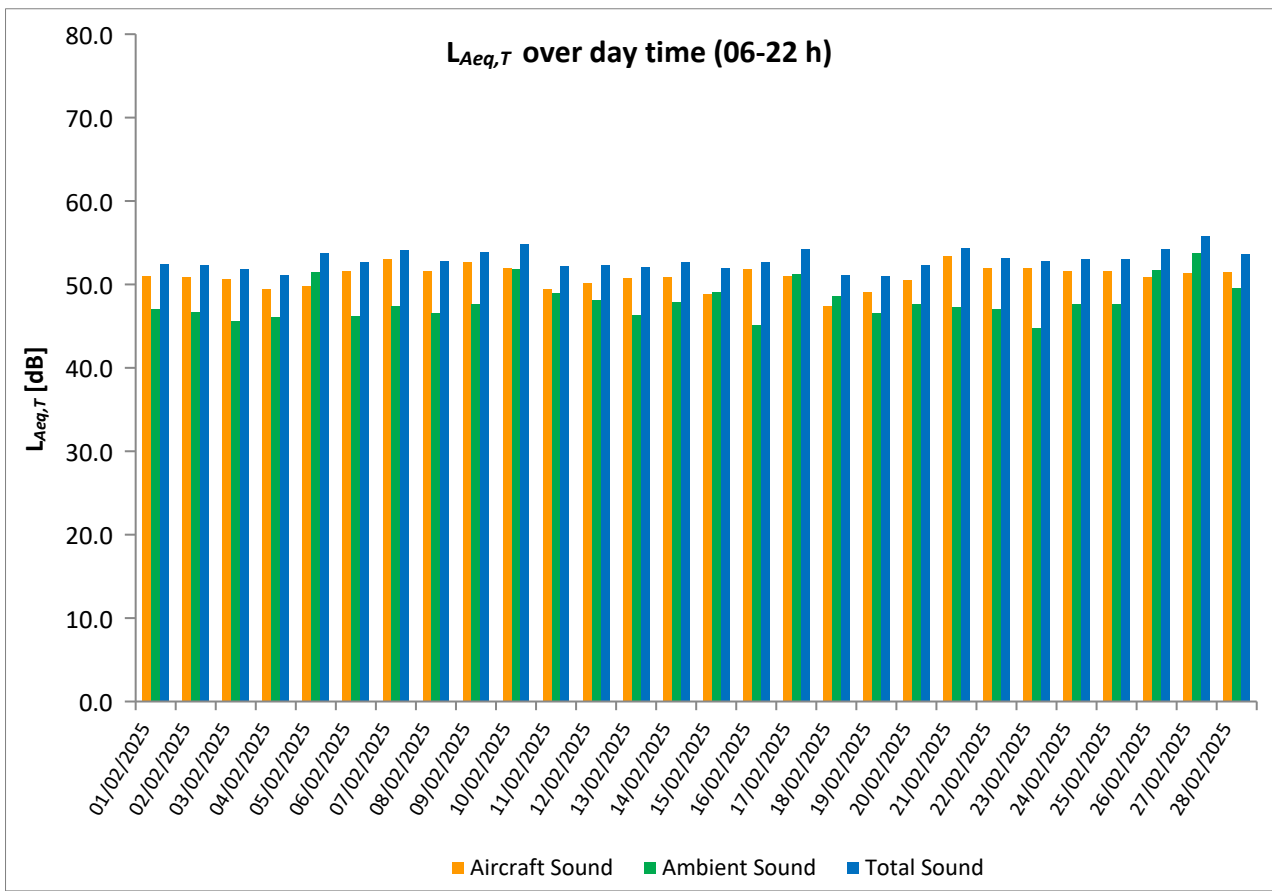
\* Availability < 50%

\*\* One or more events measured at wind speed above 5 m/s, not included into calculation

# Equivalent Continuous Sound Pressure Level

## MP11 Roztoky

February 2025



# Equivalent Continuous Sound Pressure Level

## MP12 Praha 17 - Řepy

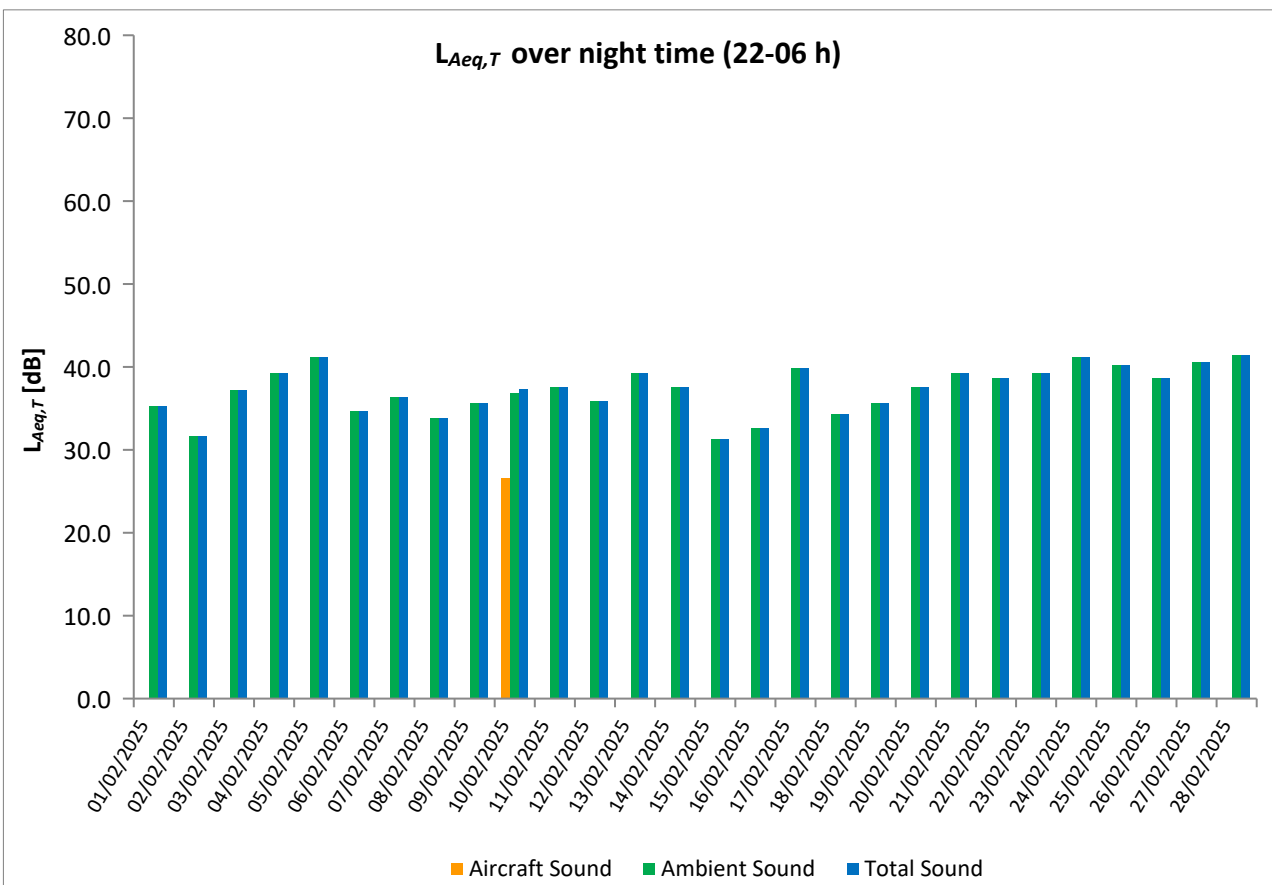
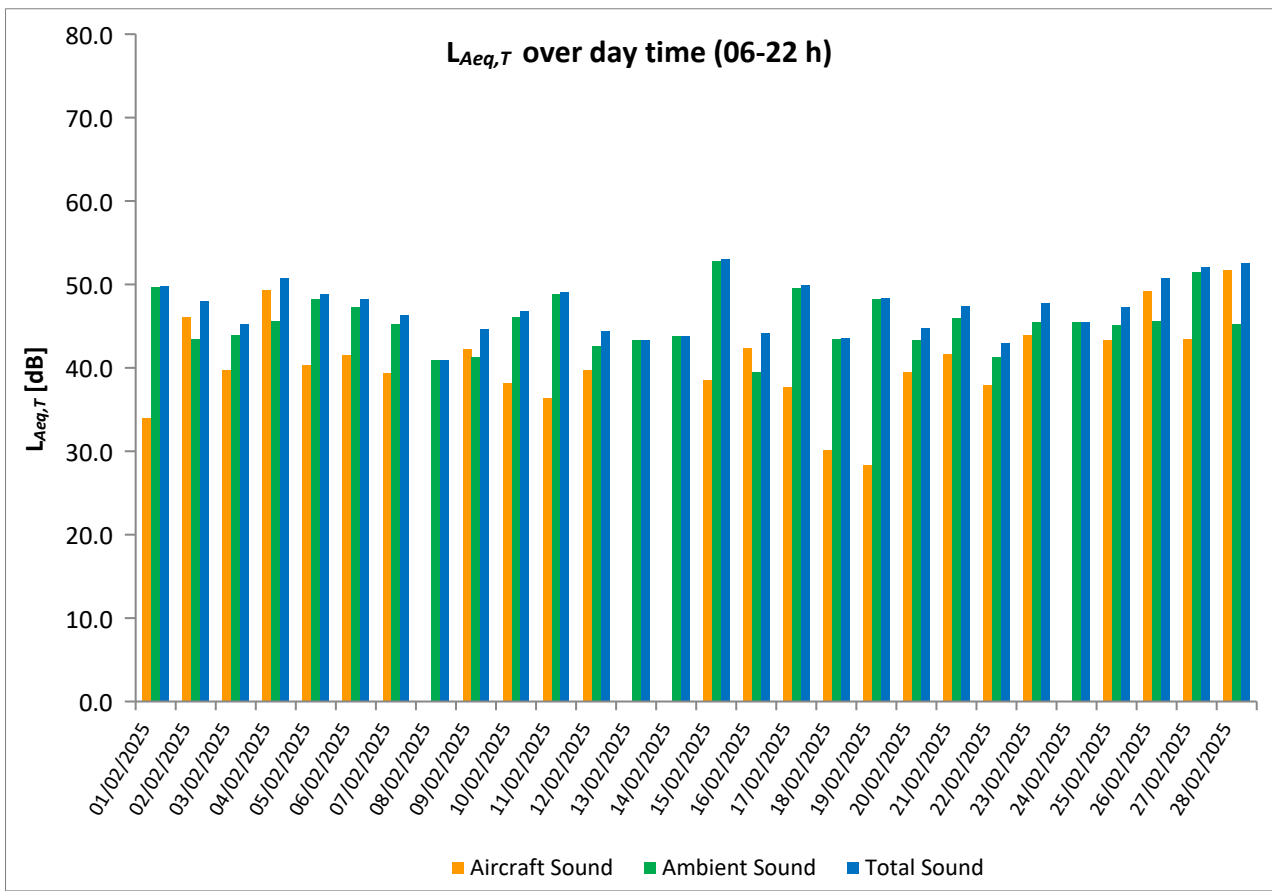
February 2025

	Total Sound [dB]		Aircraft Sound [dB]		Ambient Sound [dB]	
	L <sub>Aeq,T</sub> DAY	L <sub>Aeq,T</sub> NIGHT	L <sub>Aeq,T</sub> DAY	L <sub>Aeq,T</sub> NIGHT	L <sub>Aeq,T</sub> DAY	L <sub>Aeq,T</sub> NIGHT
01/02/2025	49.8	35.3	34.0		49.7	35.3
02/02/2025	48.0	31.6	46.1		43.5	31.6
03/02/2025	45.3	37.2	39.8		43.9	37.2
04/02/2025	50.8	39.2	49.3		45.6	39.2
05/02/2025	48.9	41.2	40.4		48.2	41.2
06/02/2025	48.3	34.7	41.5		47.3	34.7
07/02/2025	46.3	36.4	39.4		45.3	36.4
08/02/2025	40.9	33.8			40.9	33.8
09/02/2025	44.7	35.6	42.2		41.3	35.6
10/02/2025	46.8	37.3	38.2	26.6	46.1	36.9
11/02/2025	49.1	37.6	36.4		48.9	37.6
12/02/2025	44.4	35.9	39.7		42.6	35.9
13/02/2025	43.3	39.3			43.3	39.3
14/02/2025	43.8	37.6			43.8	37.6
15/02/2025	53.0	31.3	38.6		52.8	31.3
16/02/2025	44.2	32.6	42.4		39.5	32.6
17/02/2025	49.9	39.9	37.7		49.6	39.9
18/02/2025	43.6	34.3	30.2		43.4	34.3
19/02/2025	48.4	35.6	28.4		48.3	35.6
20/02/2025	44.8	37.6	39.5		43.3	37.6
21/02/2025	47.4	39.2	41.7		46.0	39.2
22/02/2025	43.0	38.7	37.9		41.3	38.7
23/02/2025	47.8	39.3	43.9		45.5	39.3
24/02/2025	45.5	41.2			45.5	41.2
25/02/2025	47.3	40.2	43.3		45.1	40.2
26/02/2025	50.8	38.6	49.2		45.6	38.6
27/02/2025	52.1	40.6	43.5		51.5	40.6
28/02/2025	52.6	41.4	51.7		45.2	41.4
Sum	48.3	38.1	43.1	12.1	46.7	38.1

\* Availability < 50%

\*\* One or more events measured at wind speed above 5 m/s, not included into calculation

Equivalent Continuous Sound Pressure Level  
 MP12 Praha 17 - Řepy  
 February 2025





# Equivalent Continuous Sound Pressure Level

## MP13 Suchdol

### February 2025



	Total Sound [dB]		Aircraft Sound [dB]		Ambient Sound [dB]	
	L <sub>Aeq,T</sub> DAY	L <sub>Aeq,T</sub> NIGHT	L <sub>Aeq,T</sub> DAY	L <sub>Aeq,T</sub> NIGHT	L <sub>Aeq,T</sub> DAY	L <sub>Aeq,T</sub> NIGHT
01/02/2025	54.4	45.8	53.0	45.3	48.7	36.4
02/02/2025	54.7	48.6	54.4	48.2	42.8	37.7
03/02/2025	54.4	49.9	54.0	49.6	43.6	38.2
04/02/2025	53.1	48.9	52.7	48.5	42.9	37.9
05/02/2025	53.8	49.1	53.3	48.8	43.5	38.1
06/02/2025	54.3	45.9	53.7	45.4	45.7	35.6
07/02/2025	54.5	47.1	53.9	46.7	45.5	36.6
08/02/2025	53.5	45.6	52.7	45.2	45.8	34.6
09/02/2025	54.9	50.0	54.6	49.7	43.0	37.8
10/02/2025	53.7	47.4	53.1	46.9	44.5	37.7
11/02/2025	51.3	47.0	50.5	46.3	43.5	38.2
12/02/2025	53.6	49.0	53.0	48.5	44.2	39.0
13/02/2025	54.6	48.9	54.3	48.5	43.0	39.0
14/02/2025	55.2	51.0	54.7	50.6	46.0	39.8
15/02/2025	52.4	47.8	52.0	47.4	42.0	37.9
16/02/2025	53.9	46.1	53.3	45.5	44.7	37.1
17/02/2025	53.6	48.0	52.7	47.7	46.1	36.8
18/02/2025	51.9	48.3	51.3	47.9	42.8	37.5
19/02/2025	51.1	44.9	50.3	44.1	43.8	37.1
20/02/2025	53.2	49.2	52.8	48.8	43.2	38.7
21/02/2025	55.5	48.4	55.1	48.0	45.1	38.0
22/02/2025	54.0	49.4	53.3	49.1	46.0	38.0
23/02/2025	56.3	49.4	56.0	49.0	43.5	38.3
24/02/2025	56.4	50.5	55.6	50.2	48.2	39.0
25/02/2025	55.8	49.1	54.2	48.7	50.7	38.0
26/02/2025	55.6	49.7	54.5	49.2	48.9	39.3
27/02/2025	56.3	49.9	55.4	49.2	48.9	41.8
28/02/2025	55.8	50.5	55.2	50.1	47.0	38.8
Sum	54.4	48.7	53.8	48.3	45.8	38.2

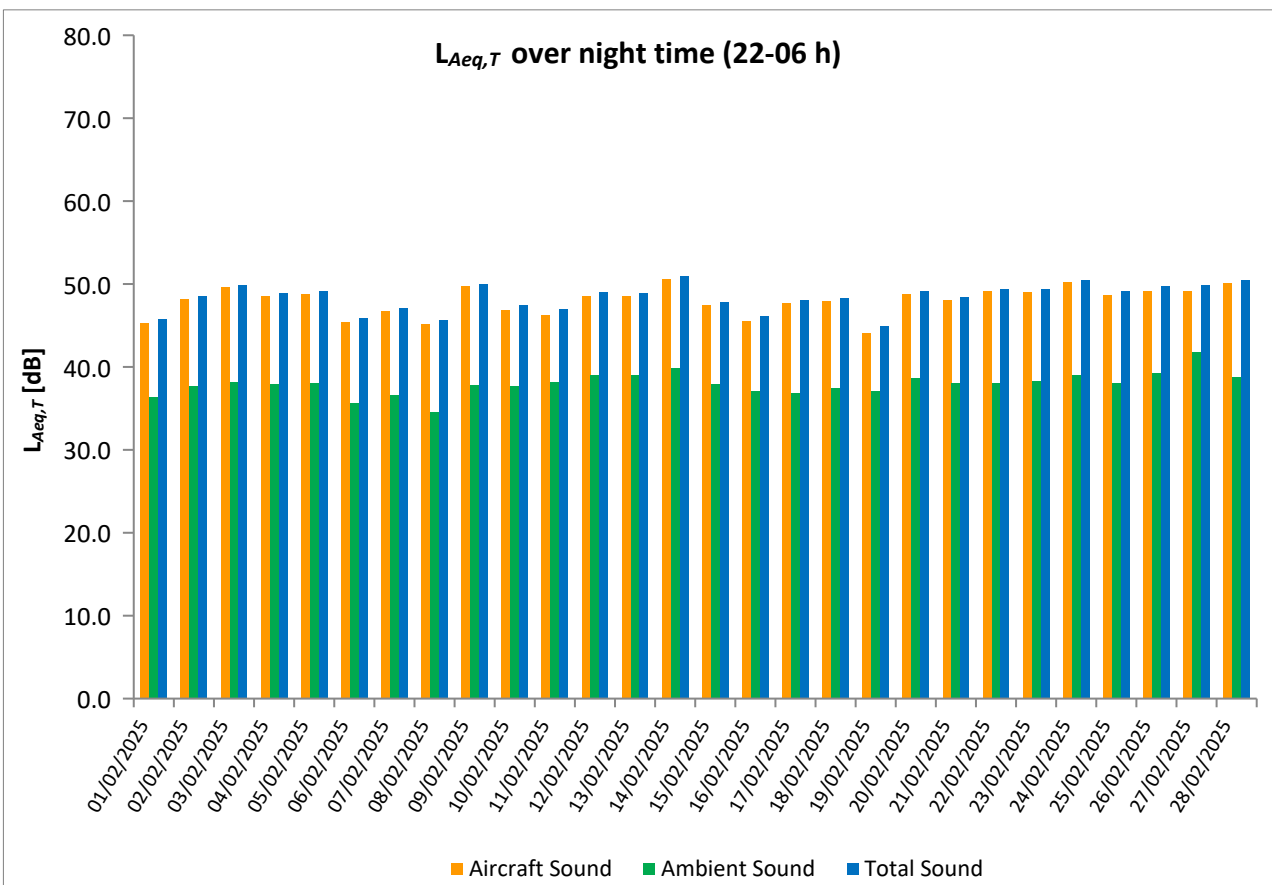
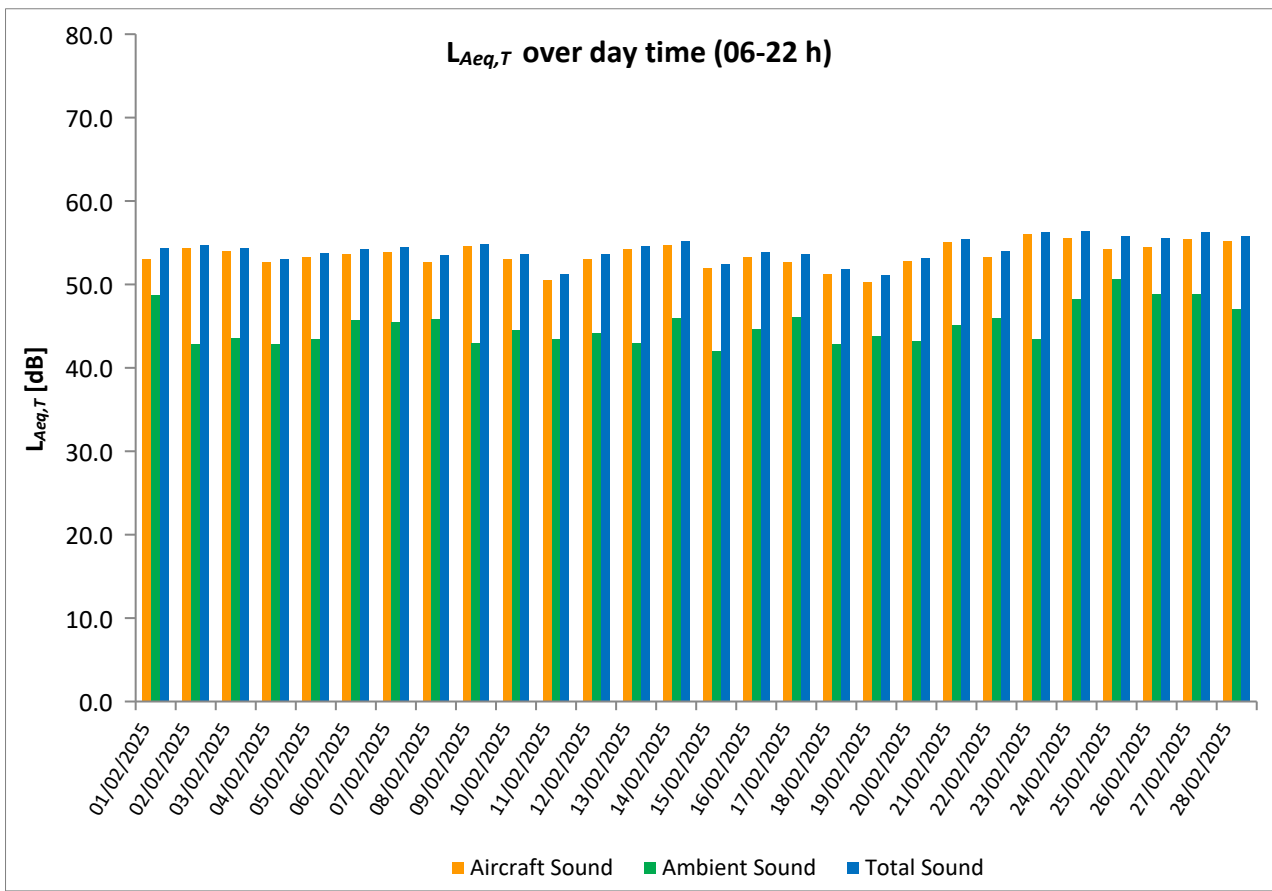
\* Availability < 50%

\*\* One or more events measured at wind speed above 5 m/s, not included into calculation

# Equivalent Continuous Sound Pressure Level

## MP13 Suchdol

February 2025



# Equivalent Continuous Sound Pressure Level

## MP14 Malé Kyšice

### February 2025

	Total Sound [dB]		Aircraft Sound [dB]		Ambient Sound [dB]	
	L <sub>Aeq,T</sub> DAY	L <sub>Aeq,T</sub> NIGHT	L <sub>Aeq,T</sub> DAY	L <sub>Aeq,T</sub> NIGHT	L <sub>Aeq,T</sub> DAY	L <sub>Aeq,T</sub> NIGHT
01/02/2025	51.7	44.5	51.0	44.3	43.2	32.4
02/02/2025	51.1	46.6	50.5	46.4	42.1	33.1
03/02/2025	51.3	45.2	50.3	44.3	44.1	38.3
04/02/2025	46.9	43.7	45.4	42.3	41.5	38.1
05/02/2025	50.5	41.9	49.7	41.3	42.7	32.8
06/02/2025	53.1	50.9	52.6	50.4	43.6	41.3
07/02/2025	55.3	51.5	55.0	51.0	43.4	42.2
08/02/2025	54.0	48.4	53.7	48.3	42.5	33.6
09/02/2025	54.4	46.3	54.1	46.0	42.7	33.7
10/02/2025	54.3	47.6	53.9	47.2	43.3	37.1
11/02/2025	52.4	49.7	51.9	49.2	42.5	39.7
12/02/2025	53.1	45.7	51.1	44.3	48.7	40.0
13/02/2025	51.7	43.8	51.3	42.5	41.7	37.9
14/02/2025	50.5	46.5	49.7	46.1	43.1	36.4
15/02/2025	50.5	44.5	49.7	44.1	42.8	33.5
16/02/2025	53.8	49.4	53.5	49.2	42.6	36.2
17/02/2025	53.4	46.1	53.0	45.8	42.5	34.4
18/02/2025	49.3	43.3	48.5	42.8	41.6	33.4
19/02/2025	52.0	47.2	51.6	47.0	41.7	34.8
20/02/2025	51.8	45.5	51.4	45.1	41.6	34.0
21/02/2025	54.9	49.6	53.9	49.4	47.9	35.2
22/02/2025	55.9	43.2	53.8	42.8	51.7	32.8
23/02/2025	52.9	46.7	52.3	46.5	44.1	33.6
24/02/2025	52.3	45.7	51.7	45.3	42.9	35.1
25/02/2025	53.6	49.1	53.2	49.0	42.7	34.4
26/02/2025	50.3	49.7	49.5	49.5	42.9	34.5
27/02/2025	51.6	46.2	50.9	45.9	43.1	35.0
28/02/2025	52.3	47.1	51.9	46.8	42.2	36.2
Sum	52.7	47.3	52.0	46.9	44.3	36.6

\* Availability < 50%

\*\* One or more events measured at wind speed above 5 m/s, not included into calculation

# Equivalent Continuous Sound Pressure Level

## MP14 Malé Kyšice

February 2025

