

## Equivalent Continuous Sound Pressure Level

MP01 Jeneč

January 2025

	Total Sound [dB]		Aircraft Sound [dB]		Ambient Sound [dB]	
	L <sub>Aeq,T</sub> DAY	L <sub>Aeq,T</sub> NIGHT	L <sub>Aeq,T</sub> DAY	L <sub>Aeq,T</sub> NIGHT	L <sub>Aeq,T</sub> DAY	L <sub>Aeq,T</sub> NIGHT
01/01/2025	*	69.1	*	45.8	*	69.1
02/01/2025	59.1	53.8	58.7	53.4	48.3	43.6
03/01/2025	60.9	52.8	60.3	52.4	52.1	42.2
04/01/2025	57.8	51.5	57.2	51.2	48.8	39.1
05/01/2025	56.7	52.5	56.2	52.3	47.6	39.2
06/01/2025	60.0	55.3	59.2	54.9	52.3	45.1
07/01/2025	58.2	53.7	57.5	53.4	49.8	42.2
08/01/2025	57.4	51.6	56.6	51.2	49.2	41.0
09/01/2025	58.2	49.6	57.5	48.4	49.4	43.2
10/01/2025	58.9	*	58.4	*	49.4	*
11/01/2025	*	47.2	*	46.2	*	40.5
12/01/2025	56.2	50.1	54.8	49.5	50.8	41.3
13/01/2025	57.9	48.8	57.0	47.9	50.7	41.5
14/01/2025	55.3	50.1	52.8	49.5	51.8	40.9
15/01/2025	57.5	51.2	56.5	50.5	50.5	42.9
16/01/2025	56.5	49.0	55.4	47.6	49.8	43.4
17/01/2025	55.4	47.7	54.4	45.4	48.1	43.8
18/01/2025	55.3	44.3	54.2	43.4	48.8	37.0
19/01/2025	56.6	51.5	55.8	51.0	48.9	41.2
20/01/2025	58.5	48.9	57.9	48.0	49.9	41.7
21/01/2025	54.2	45.5	53.3	44.7	46.6	37.5
22/01/2025	54.4	48.5	53.3	48.1	48.1	38.1
23/01/2025	58.3	51.4	57.8	51.1	48.5	40.2
24/01/2025	59.2	51.3	58.4	50.5	51.0	43.7
25/01/2025	57.2	48.5	56.5	47.9	49.0	39.6
26/01/2025	58.4	49.8	58.0	49.4	47.6	38.7
27/01/2025	58.2	50.8	57.7	50.4	48.6	40.2
28/01/2025	56.9	49.0	56.2	48.4	48.6	40.8
29/01/2025	57.5	51.1	56.6	50.6	50.0	41.8
30/01/2025	58.1	52.1	57.3	51.2	50.7	44.8
31/01/2025	59.2	51.6	58.7	50.2	50.2	45.8
Sum	57.7	55.3	57.0	50.2	49.6	53.7

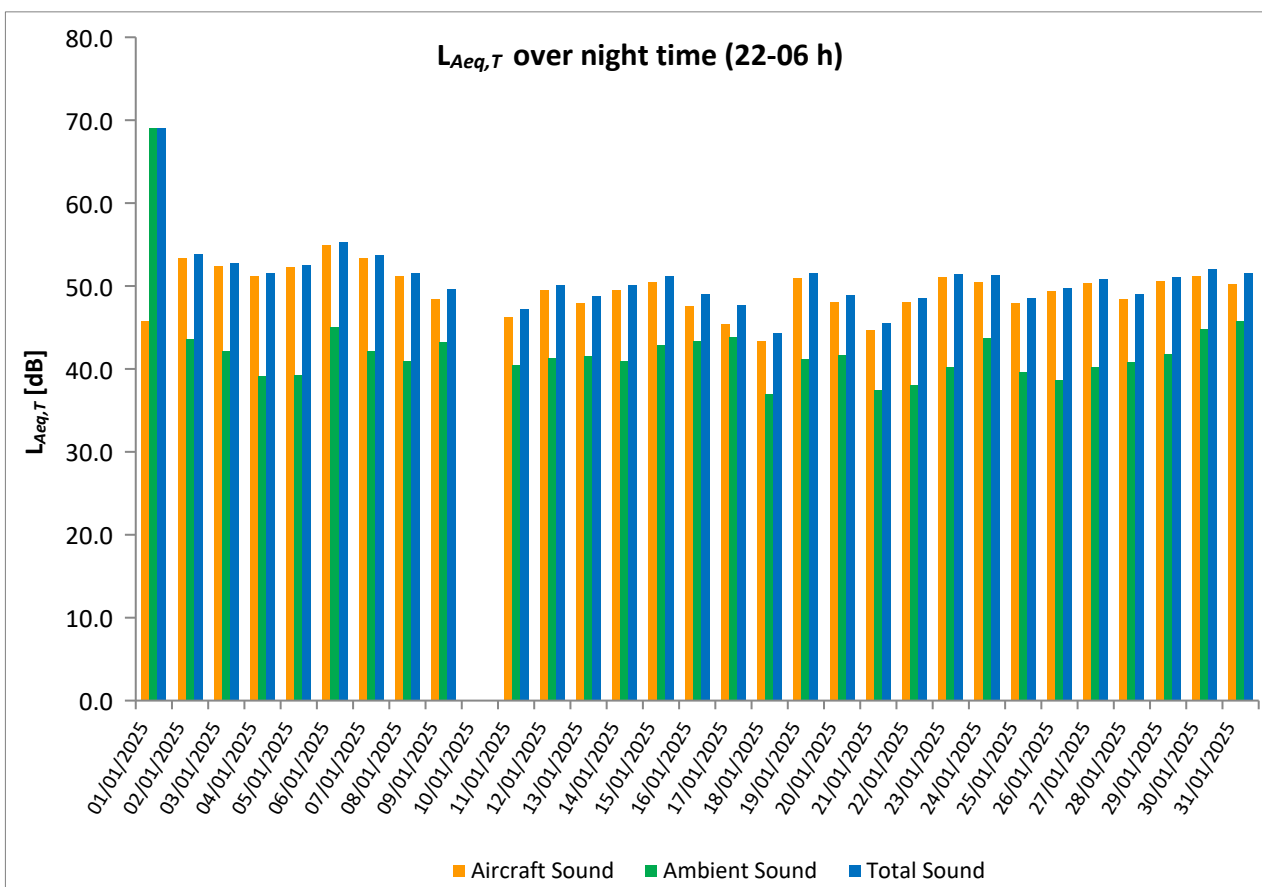
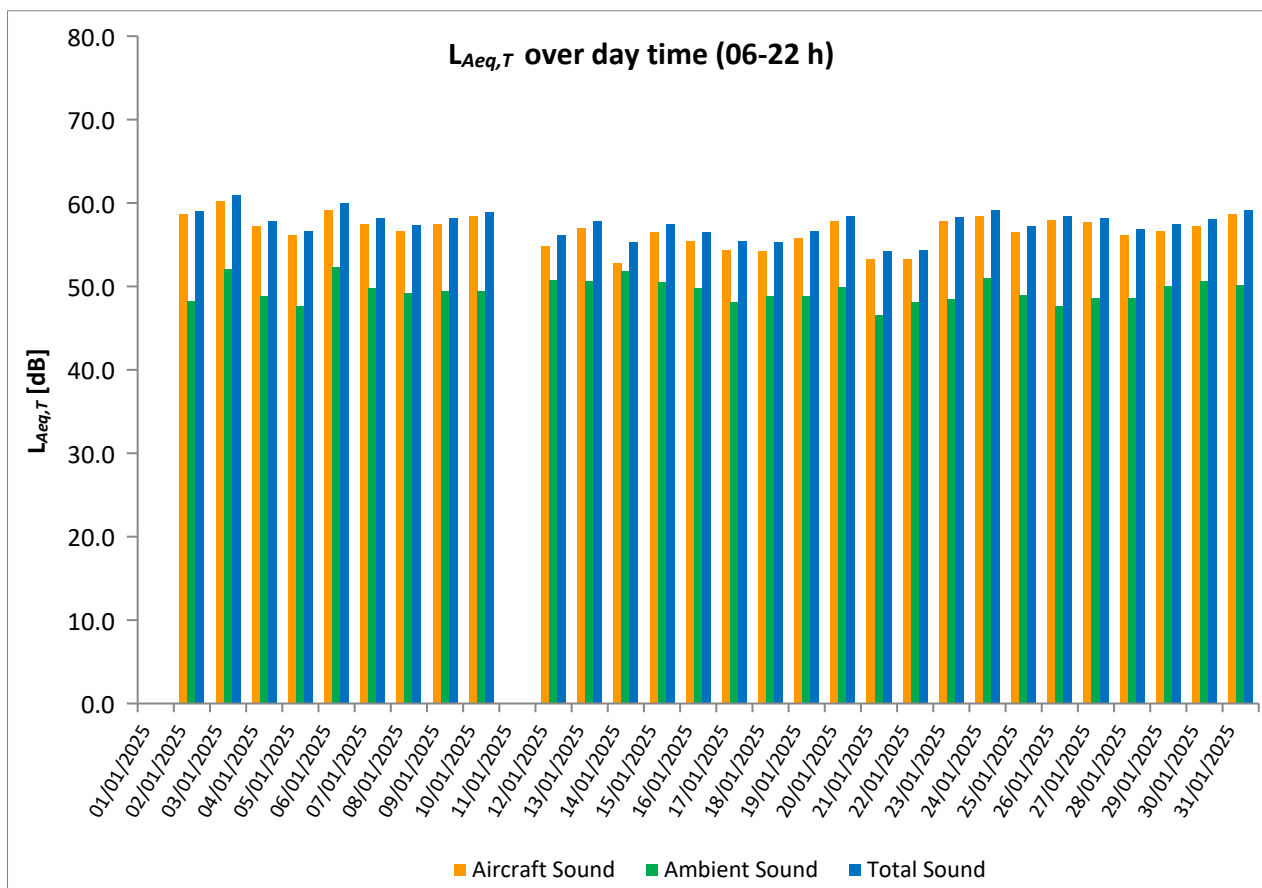
\* Availability < 50%

\*\* One or more events measured at wind speed above 5 m/s, not included into calculation

# Equivalent Continuous Sound Pressure Level

MP01 Jeneč

January 2025



# Equivalent Continuous Sound Pressure Level

## MP02 Červený Újezd

### January 2025



	Total Sound [dB]		Aircraft Sound [dB]		Ambient Sound [dB]	
	L <sub>Aeq,T</sub> DAY	L <sub>Aeq,T</sub> NIGHT	L <sub>Aeq,T</sub> DAY	L <sub>Aeq,T</sub> NIGHT	L <sub>Aeq,T</sub> DAY	L <sub>Aeq,T</sub> NIGHT
01/01/2025	50.9	65.7	48.6	37.9	46.9	65.7
02/01/2025	53.8	48.8	52.6	47.4	47.5	43.1
03/01/2025	55.2	47.2	53.7	45.9	49.9	41.4
04/01/2025	52.1	45.7	51.4	45.1	43.8	36.6
05/01/2025	51.5	47.5	50.4	46.8	44.8	39.0
06/01/2025	54.4	50.0	53.0	49.5	48.8	40.2
07/01/2025	53.3	48.0	51.4	47.2	48.8	40.3
08/01/2025	53.2	47.4	50.5	46.6	49.8	39.6
09/01/2025	54.3	45.6	52.3	43.4	49.8	41.7
10/01/2025	54.1	47.1	52.5	44.5	49.1	43.6
11/01/2025	51.1	42.5	48.8	40.6	47.3	38.0
12/01/2025	51.5	44.5	48.6	43.2	48.3	38.6
13/01/2025	52.7	43.6	50.5	42.1	48.8	38.3
14/01/2025	49.5	44.3	44.1	43.0	48.1	38.3
15/01/2025	52.5	45.2	48.8	44.3	50.1	37.9
16/01/2025	51.5	43.7	47.1	42.5	49.5	37.7
17/01/2025	53.5	40.0	47.6	37.9	52.2	35.9
18/01/2025	50.6	38.0	47.0	35.0	48.1	34.9
19/01/2025	51.9	47.0	50.5	46.8	46.3	34.2
20/01/2025	53.8	43.2	52.1	42.4	48.8	35.7
21/01/2025	50.3	41.0	47.3	39.0	47.4	36.6
22/01/2025	51.9	43.6	47.5	42.6	49.9	36.6
23/01/2025	53.9	46.2	52.3	45.5	48.8	38.1
24/01/2025	55.3	45.2	52.7	43.8	51.8	39.5
25/01/2025	52.1	46.0	50.4	44.9	47.3	39.2
26/01/2025	53.5	43.3	52.2	42.3	47.5	36.2
27/01/2025	53.5	45.9	51.6	44.3	49.1	40.5
28/01/2025	52.7	45.4	49.9	43.8	49.4	40.5
29/01/2025	53.9	45.8	50.6	44.7	51.1	39.1
30/01/2025	53.9	46.8	51.1	45.5	50.7	40.7
31/01/2025	55.4	46.2	52.3	45.0	52.5	40.1
Sum	53.1	51.7	50.8	44.5	49.2	50.8

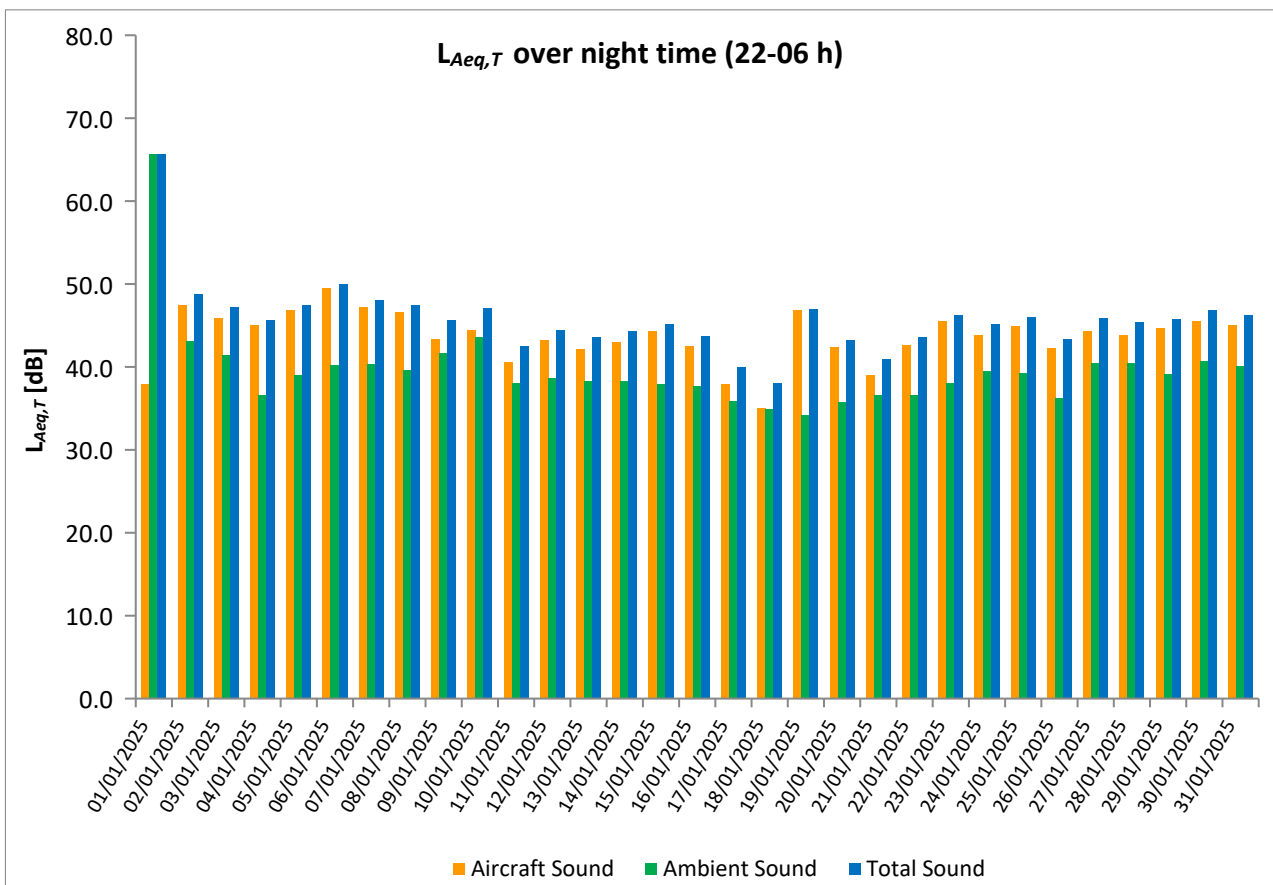
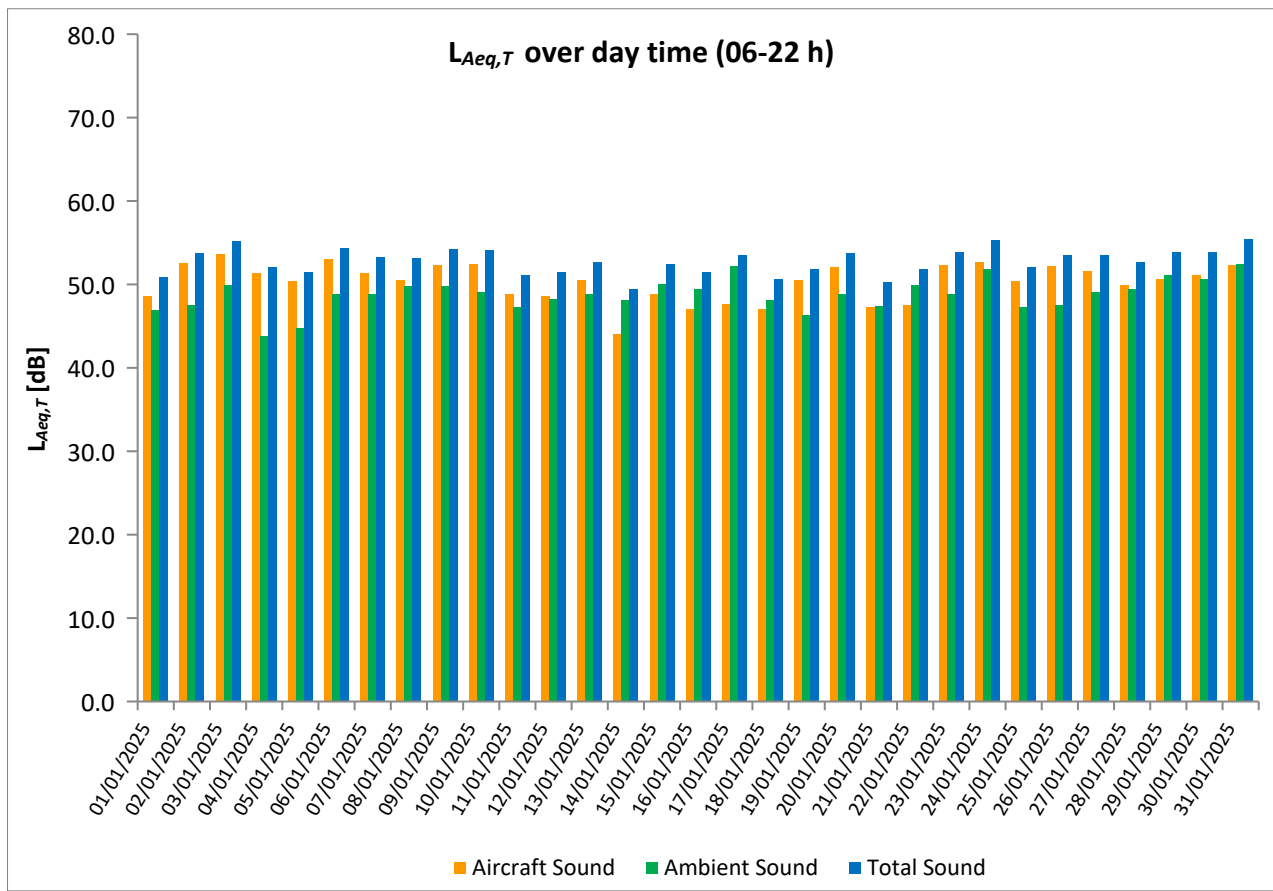
\* Availability < 50%

\*\* One or more events measured at wind speed above 5 m/s, not included into calculation

# Equivalent Continuous Sound Pressure Level

## MP02 Červený Újezd

January 2025



## Equivalent Continuous Sound Pressure Level

### MP03 Unhošť

### January 2025

	Total Sound [dB]		Aircraft Sound [dB]		Ambient Sound [dB]	
	L <sub>Aeq,T</sub> DAY	L <sub>Aeq,T</sub> NIGHT	L <sub>Aeq,T</sub> DAY	L <sub>Aeq,T</sub> NIGHT	L <sub>Aeq,T</sub> DAY	L <sub>Aeq,T</sub> NIGHT
01/01/2025	58.4	67.0	49.0	39.2	57.8	67.0
02/01/2025	54.0	49.3	53.2	48.3	46.1	42.6
03/01/2025	54.6	47.6	53.8	47.1	46.6	37.7
04/01/2025	52.9	46.2	52.4	45.5	43.2	37.6
05/01/2025	51.6	47.6	51.1	47.3	42.1	35.2
06/01/2025	54.3	49.9	53.4	49.6	47.0	38.3
07/01/2025	52.9	48.7	52.0	47.5	45.9	42.4
08/01/2025	52.1	47.5	51.1	46.9	45.4	39.1
09/01/2025	52.8	44.9	51.9	43.1	45.7	40.1
10/01/2025	53.3	45.7	52.6**	43.4**	44.8	41.8
11/01/2025	49.0	43.0	47.3	41.8	44.2	36.9
12/01/2025	50.5	45.5	49.0	44.6	45.3	38.0
13/01/2025	52.5	44.6	51.8	43.8	44.2	36.9
14/01/2025	47.6	44.4	45.1	43.8	43.9	36.0
15/01/2025	51.5	46.0	50.4	45.3	45.1	37.6
16/01/2025	50.2	44.7	49.3	44.1	42.9	35.9
17/01/2025	50.4	41.3	49.7	40.5	42.3	33.2
18/01/2025	49.6	39.4	48.8	38.6	41.9	31.5
19/01/2025	52.9	48.8	52.5	48.6	41.9	35.5
20/01/2025	53.6	44.6	53.2	44.2	43.1	34.2
21/01/2025	49.5	41.5	48.7	40.9	41.6	32.0
22/01/2025	50.2	44.2	49.4	43.8	42.4	33.8
23/01/2025	53.2	46.7	52.6	46.4	44.6	34.6
24/01/2025	53.8	43.8	53.3	43.2	44.4	35.0
25/01/2025	52.4	45.6	51.2	44.4	46.5	39.5
26/01/2025	53.5	44.5	52.9	44.0	44.4	34.8
27/01/2025	53.5	46.7	52.8	45.6	45.3	40.3
28/01/2025	51.9	44.9	51.0	44.4	44.5	34.7
29/01/2025	52.3	45.7	51.1	45.3	46.3	35.2
30/01/2025	53.1	47.3	52.4	46.8	44.6	37.8
31/01/2025	53.9	46.9	53.4	46.1	44.6	39.2
Sum	52.7	52.7	51.6	45.3	46.1	51.8

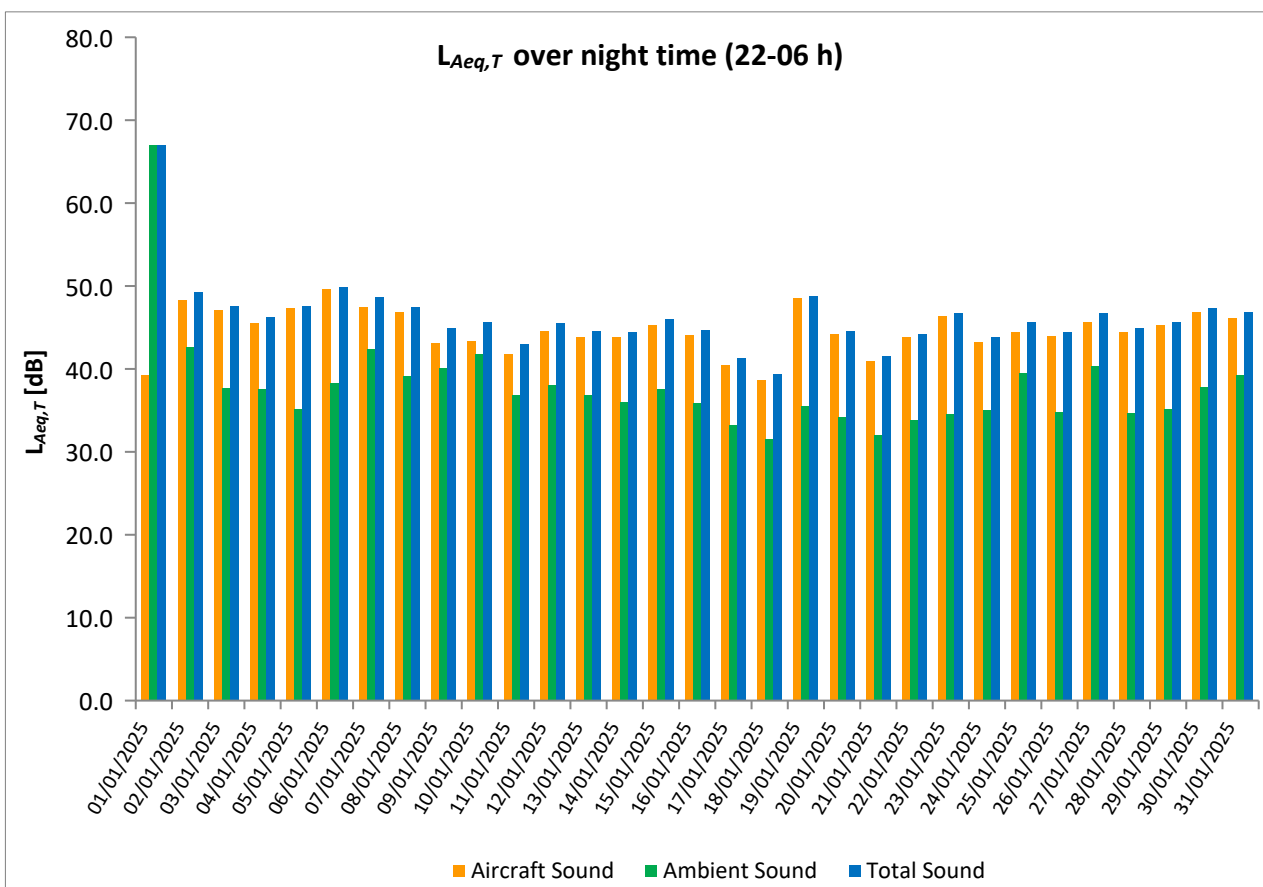
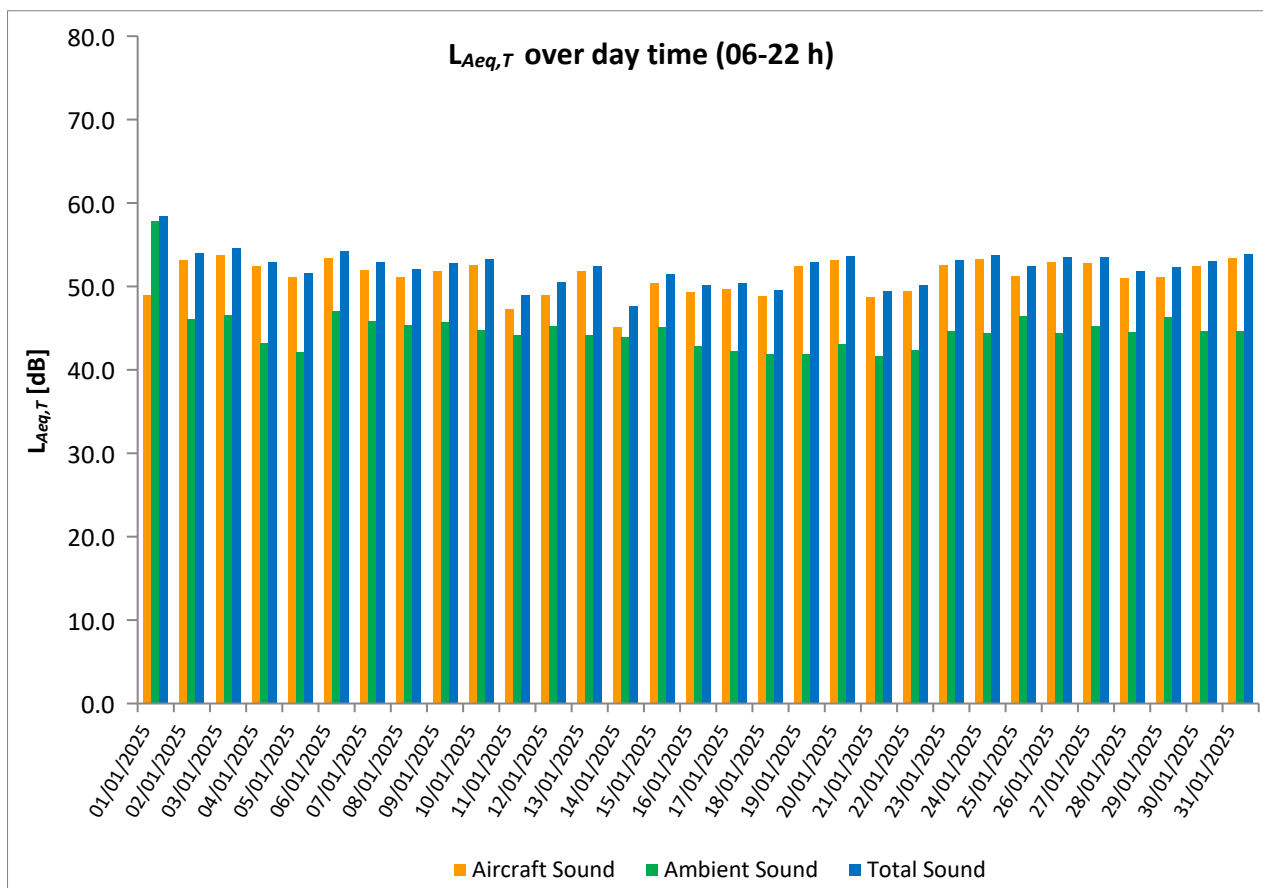
\* Availability < 50%

\*\* One or more events measured at wind speed above 5 m/s, not included into calculation

# Equivalent Continuous Sound Pressure Level

## MP03 Unhošť

January 2025



## Equivalent Continuous Sound Pressure Level

### MP04 Pavlov

### January 2025

	Total Sound [dB]		Aircraft Sound [dB]		Ambient Sound [dB]	
	L <sub>Aeq,T</sub> DAY	L <sub>Aeq,T</sub> NIGHT	L <sub>Aeq,T</sub> DAY	L <sub>Aeq,T</sub> NIGHT	L <sub>Aeq,T</sub> DAY	L <sub>Aeq,T</sub> NIGHT
01/01/2025	55.0	64.4	51.4	43.4	52.6	64.4
02/01/2025	55.8	52.1	54.7	48.7	49.3	49.5
03/01/2025	56.5	49.3	55.1	47.9	50.7	43.7
04/01/2025	54.4	48.0	53.6	47.4	46.8	38.9
05/01/2025	53.7	49.1	52.5	48.6	47.6	38.9
06/01/2025	57.8	52.4	54.2	51.0	55.3	46.8
07/01/2025	54.9	50.8	53.3	49.5	49.9	44.9
08/01/2025	54.0	50.1	52.2	48.7	49.2	44.4
09/01/2025	56.4	47.8	53.8	44.6	53.0	45.0
10/01/2025	55.7	49.0	54.1	45.5	50.4	46.4
11/01/2025	53.8	45.6	49.1	42.8	52.0	42.3
12/01/2025	53.0	47.3	50.3	45.4	49.7	42.6
13/01/2025	55.8	48.6	53.2	45.3	52.3	45.8
14/01/2025	52.1	47.5	46.7	45.3	50.6	43.5
15/01/2025	54.2	48.8	51.5	46.6	50.9	44.6
16/01/2025	53.8	46.9	49.9	44.6	51.6	43.1
17/01/2025	52.0	43.5	50.4	40.6	46.8	40.3
18/01/2025	52.7	41.0	49.8	38.5	49.5	37.5
19/01/2025	54.2	50.3	53.1	49.7	47.7	41.8
20/01/2025	55.2	46.8	54.3	45.5	47.9	41.2
21/01/2025	51.4	43.6	49.1	41.3	47.5	39.7
22/01/2025	51.7	45.7	50.0	44.6	46.8	39.1
23/01/2025	55.3	48.8	53.8	48.0	49.9	40.9
24/01/2025	55.8	47.4	54.5	46.0	49.9	41.9
25/01/2025	54.6	46.8	52.2	45.6	50.9	40.8
26/01/2025	55.8	46.6	54.1	45.6	50.8	39.5
27/01/2025	55.4	48.9	53.9	47.5	49.9	43.1
28/01/2025	55.3	47.7	52.1	45.7	52.5	43.3
29/01/2025	54.8	48.1	52.4	46.8	51.1	42.4
30/01/2025	56.1	50.3	53.6	48.3	52.4	46.0
31/01/2025	55.9	48.9	54.7	47.0	49.5	44.4
Sum	54.9	52.0	52.8	46.7	50.6	50.5

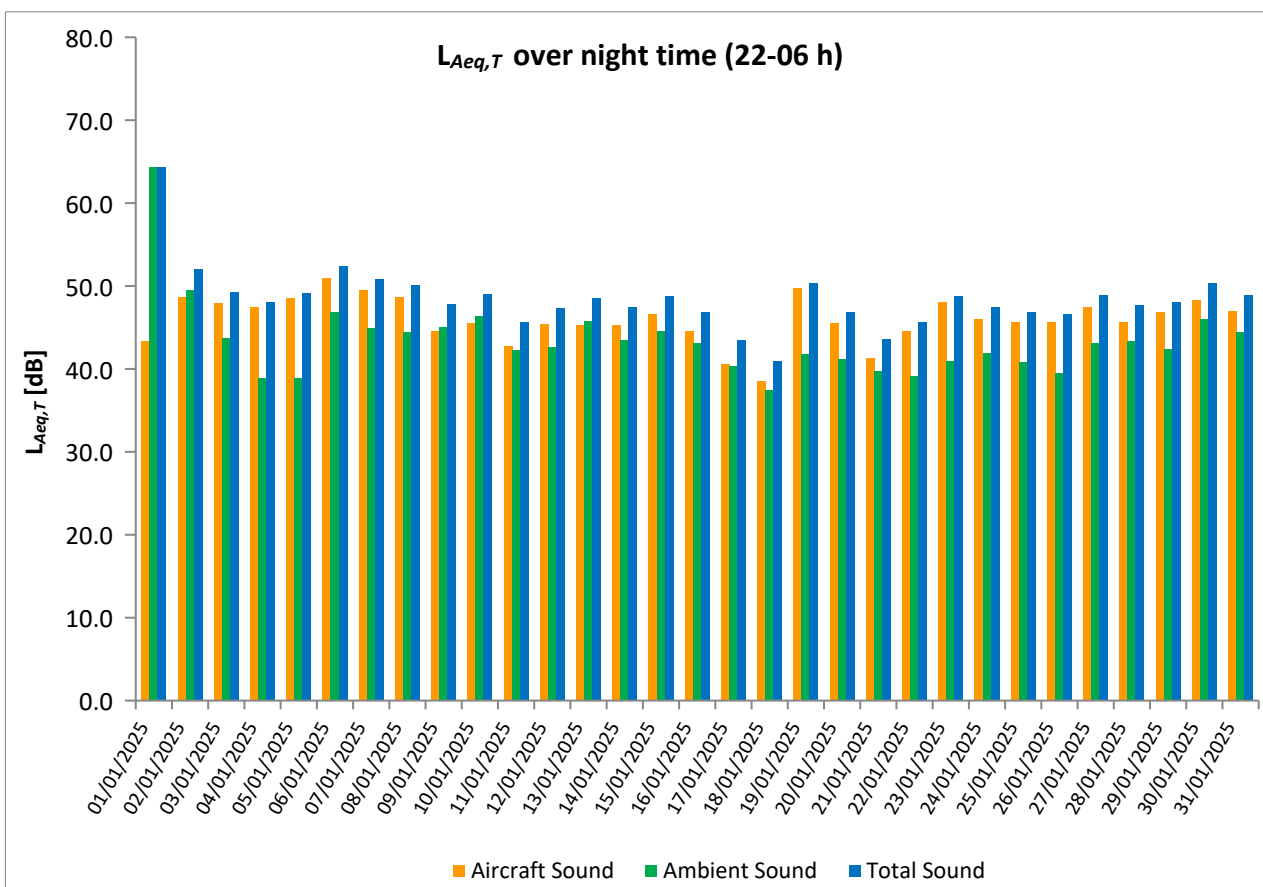
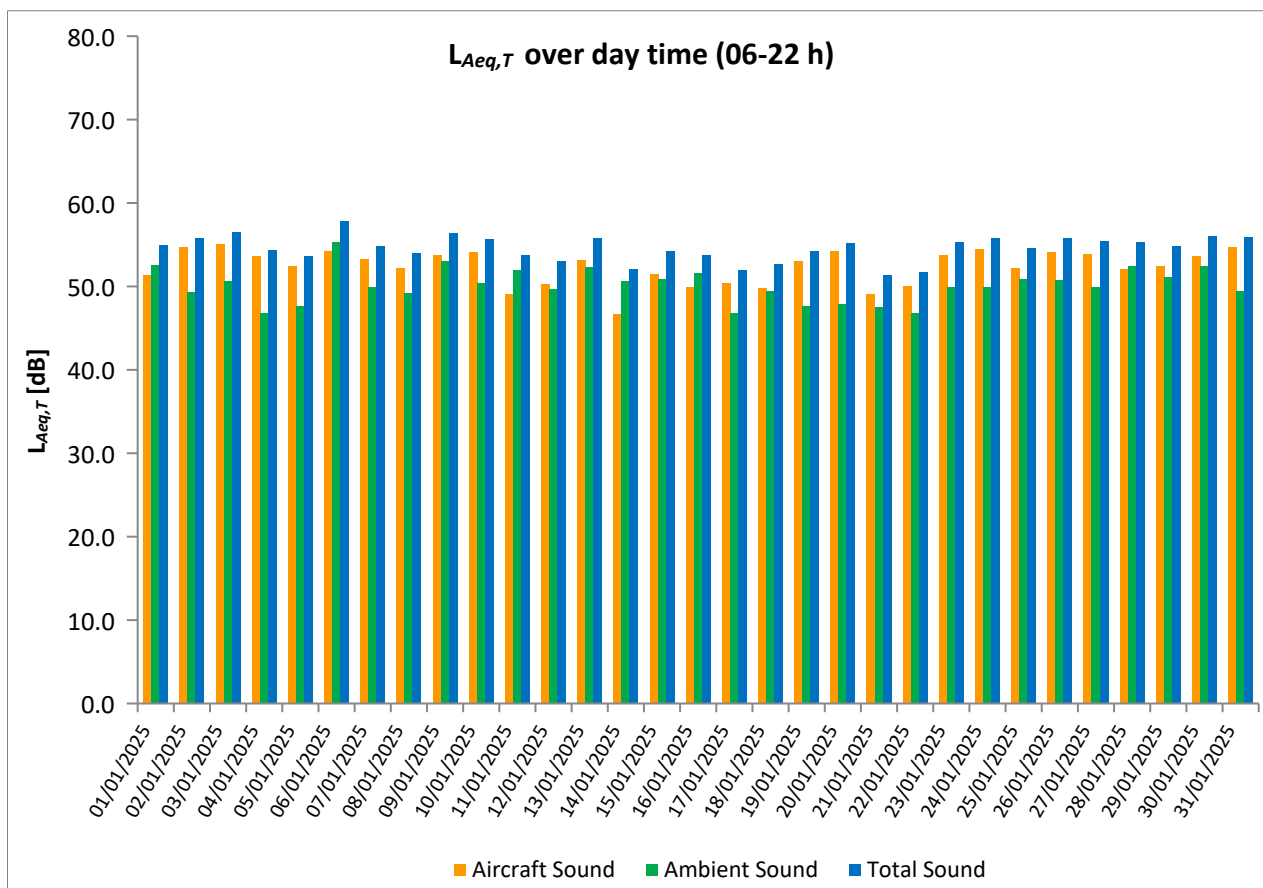
\* Availability < 50%

\*\* One or more events measured at wind speed above 5 m/s, not included into calculation

# Equivalent Continuous Sound Pressure Level

## MP04 Pavlov

January 2025





# Equivalent Continuous Sound Pressure Level

## MP05 Hostivice

### January 2025



	Total Sound [dB]		Aircraft Sound [dB]		Ambient Sound [dB]	
	L <sub>Aeq,T</sub> DAY	L <sub>Aeq,T</sub> NIGHT	L <sub>Aeq,T</sub> DAY	L <sub>Aeq,T</sub> NIGHT	L <sub>Aeq,T</sub> DAY	L <sub>Aeq,T</sub> NIGHT
01/01/2025	50.3	66.3	45.4	33.5	48.6	66.3
02/01/2025	49.7	46.4	46.2	39.1	47.1	45.5
03/01/2025	50.8	42.6	47.3	39.1	48.3	40.0
04/01/2025	47.8	41.1	45.8	39.1	43.3	36.8
05/01/2025	46.3	40.6	44.0	39.4	42.3	34.6
06/01/2025	50.3	44.4	45.9	42.0	48.4	40.8
07/01/2025	49.6	43.6	46.1	40.2	47.1	40.9
08/01/2025	48.0	41.2	44.4	36.2	45.6	39.6
09/01/2025	49.2	43.5	45.5	36.8	46.8	42.4
10/01/2025	50.1	45.2	47.2	37.5	46.9	44.4
11/01/2025	48.7	39.7	42.2	32.6	47.6	38.7
12/01/2025	48.2	41.0	41.9	34.0	47.1	40.1
13/01/2025	48.1	40.3	44.5	35.4	45.5	38.5
14/01/2025	47.1	40.2	41.4	35.6	45.8	38.4
15/01/2025	50.1	42.6	44.3	37.2	48.8	41.2
16/01/2025	45.9	39.1	41.9	33.8	43.7	37.6
17/01/2025	44.4	36.8	38.0	26.6	43.2	36.4
18/01/2025	45.0	34.6	40.8	26.6	42.9	33.8
19/01/2025	46.2	40.3	42.0	36.7	44.1	37.8
20/01/2025	48.1	41.8	44.8	32.3	45.4	41.3
21/01/2025	44.8	35.8	39.7	29.3	43.2	34.7
22/01/2025	44.2	37.3	38.3	32.2	42.9	35.7
23/01/2025	49.0	40.0	45.4	37.7	46.4	36.2
24/01/2025	48.7	40.4	46.2	37.4	45.2	37.4
25/01/2025	47.1	38.5	42.3	34.3	45.3	36.4
26/01/2025	47.6	38.0	44.8	35.1	44.3	35.0
27/01/2025	47.9	40.5	43.9	36.3	45.8	38.5
28/01/2025	48.6	40.2	43.4	35.6	47.1	38.3
29/01/2025	48.7	40.4	43.2	36.9	47.3	37.7
30/01/2025	48.8	41.8	44.4	37.6	46.9	39.8
31/01/2025	49.7	42.7	46.1	37.6	47.3	41.1
Sum	48.3	51.8	44.3	36.7	46.1	51.6

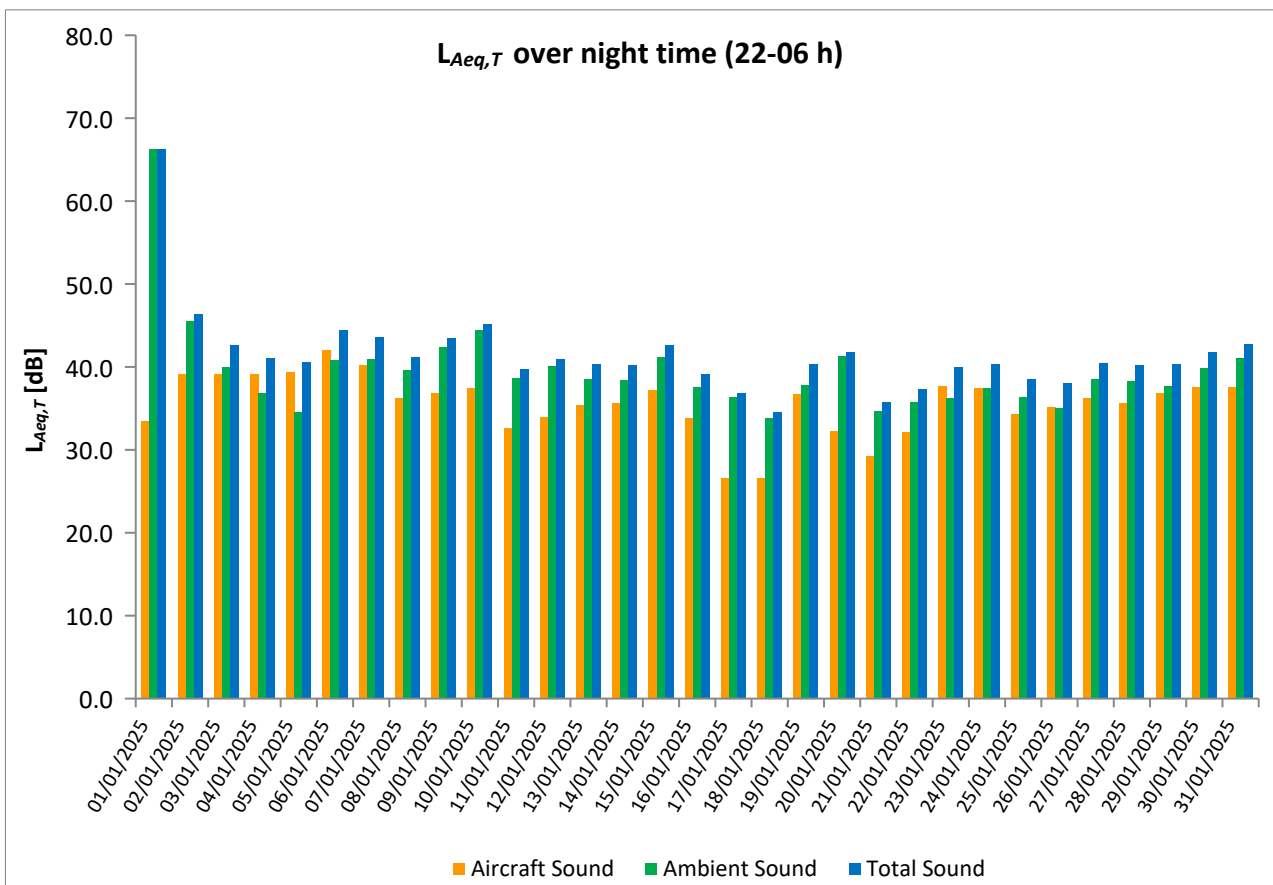
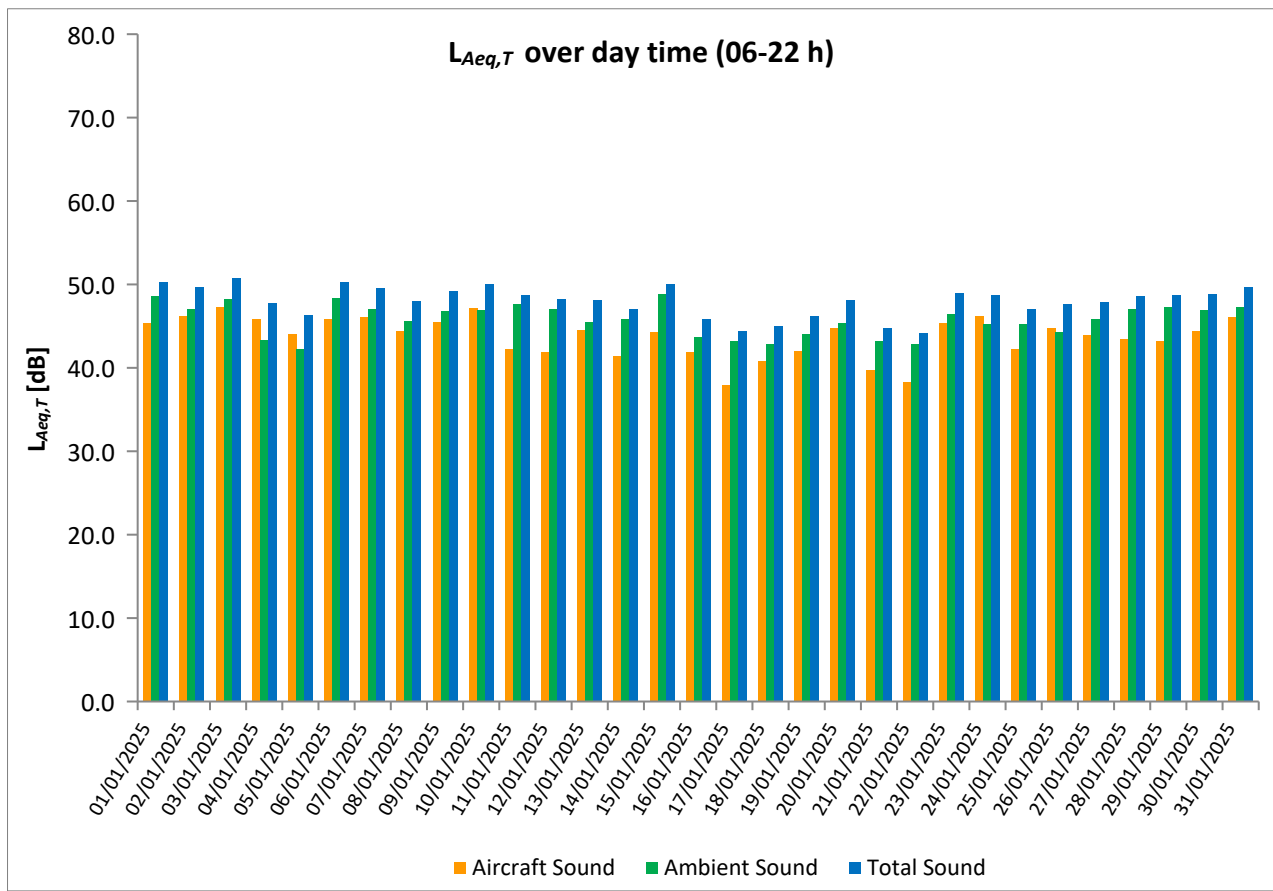
\* Availability < 50%

\*\* One or more events measured at wind speed above 5 m/s, not included into calculation

# Equivalent Continuous Sound Pressure Level

## MP05 Hostivice

January 2025



# Equivalent Continuous Sound Pressure Level

## MP06 Dobrovíz

### January 2025



	Total Sound [dB]		Aircraft Sound [dB]		Ambient Sound [dB]	
	L <sub>Aeq,T</sub> DAY	L <sub>Aeq,T</sub> NIGHT	L <sub>Aeq,T</sub> DAY	L <sub>Aeq,T</sub> NIGHT	L <sub>Aeq,T</sub> DAY	L <sub>Aeq,T</sub> NIGHT
01/01/2025	*	66.0	*	34.6	*	66.0
02/01/2025	56.7	*	56.3	*	45.9	*
03/01/2025	56.1	47.1	55.3	45.8	48.1	41.2
04/01/2025	53.0	47.1	52.1	45.9	45.6	40.8
05/01/2025	54.3	48.5	53.3	47.7	47.6	40.8
06/01/2025	58.0	52.4	56.8	50.8	51.8	47.0
07/01/2025	55.4	49.4	54.2	48.5	49.2	42.2
08/01/2025	53.7	48.4	52.4	46.4	47.9	43.9
09/01/2025	54.8	48.2	53.3	46.0	49.5	44.2
10/01/2025	54.9	46.6	54.0	44.1	47.5	43.2
11/01/2025	55.7	46.7	55.2	45.5	46.1	40.5
12/01/2025	57.0	51.1	56.7	50.7	44.2	40.6
13/01/2025	53.0	44.7	52.1	43.1	45.8	39.6
14/01/2025	51.2	45.0	49.3	42.5	46.6	41.4
15/01/2025	52.1	44.7	51.0	42.4	45.8	40.7
16/01/2025	52.7	45.4	51.5	42.8	46.4	41.9
17/01/2025	53.1	43.8	51.3	40.4	48.4	41.1
18/01/2025	51.8	43.6	50.7	39.2	45.2	41.6
19/01/2025	54.6	50.6	53.2	48.5	48.7	46.4
20/01/2025	55.3	47.4	53.5	44.9	50.6	43.7
21/01/2025	50.7	42.5	49.2	40.4	45.2	38.3
22/01/2025	52.1	45.5	50.2	43.8	47.7	40.4
23/01/2025	54.6	46.7	53.4	45.1	48.5	41.4
24/01/2025	55.6	48.3	54.3	46.7	49.8	43.3
25/01/2025	56.4	46.7	54.2	43.8	52.4	43.5
26/01/2025	54.0	45.5	53.2	43.1	46.4	41.7
27/01/2025	55.3	47.1	53.1	45.0	51.3	43.0
28/01/2025	54.7	46.6	53.2	44.2	49.5	42.7
29/01/2025	53.6	46.4	52.0	44.4	48.5	42.1
30/01/2025	55.4	46.9	53.5	44.6	51.0	43.0
31/01/2025	53.7	45.3	52.5	43.3	47.6	40.9
Sum	54.6	52.0	53.4	45.6	48.5	50.8

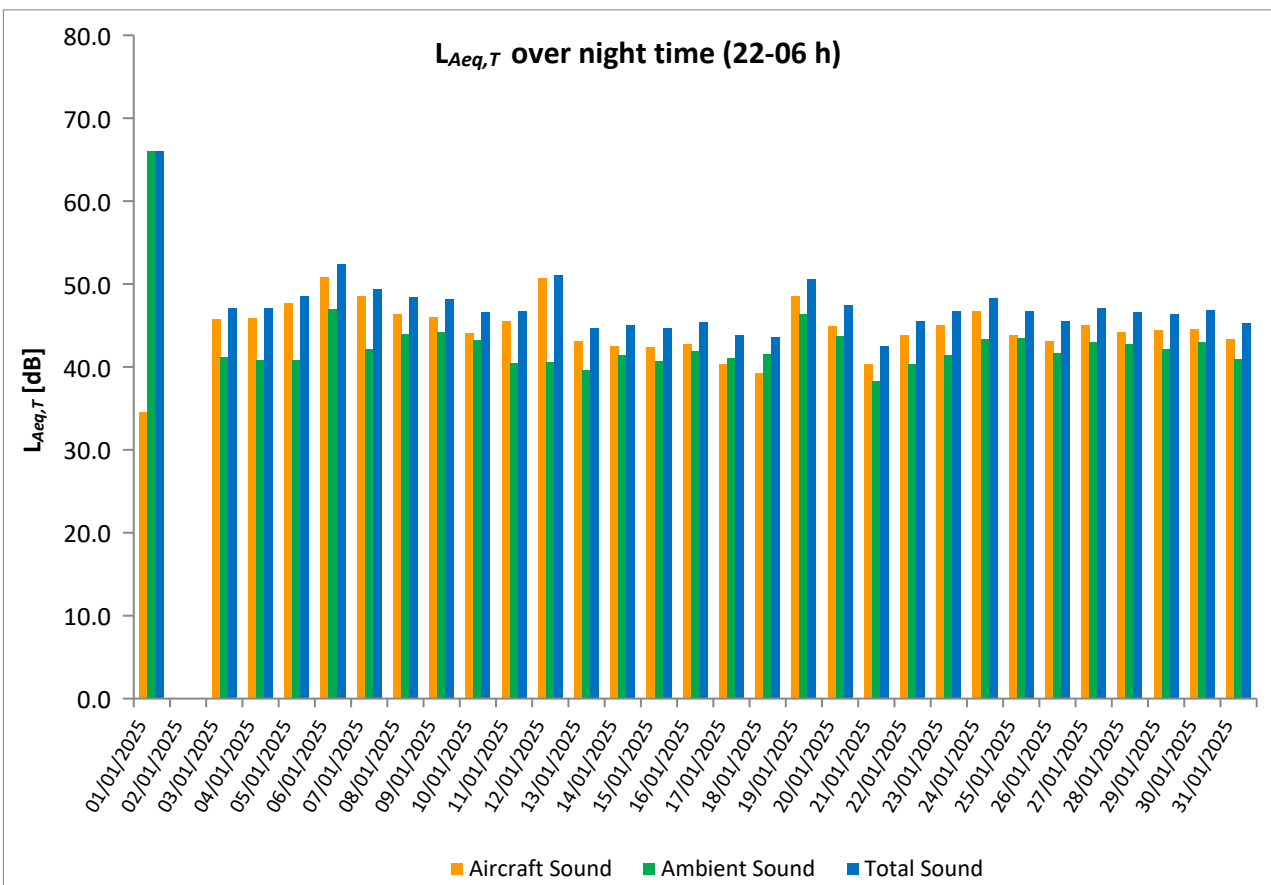
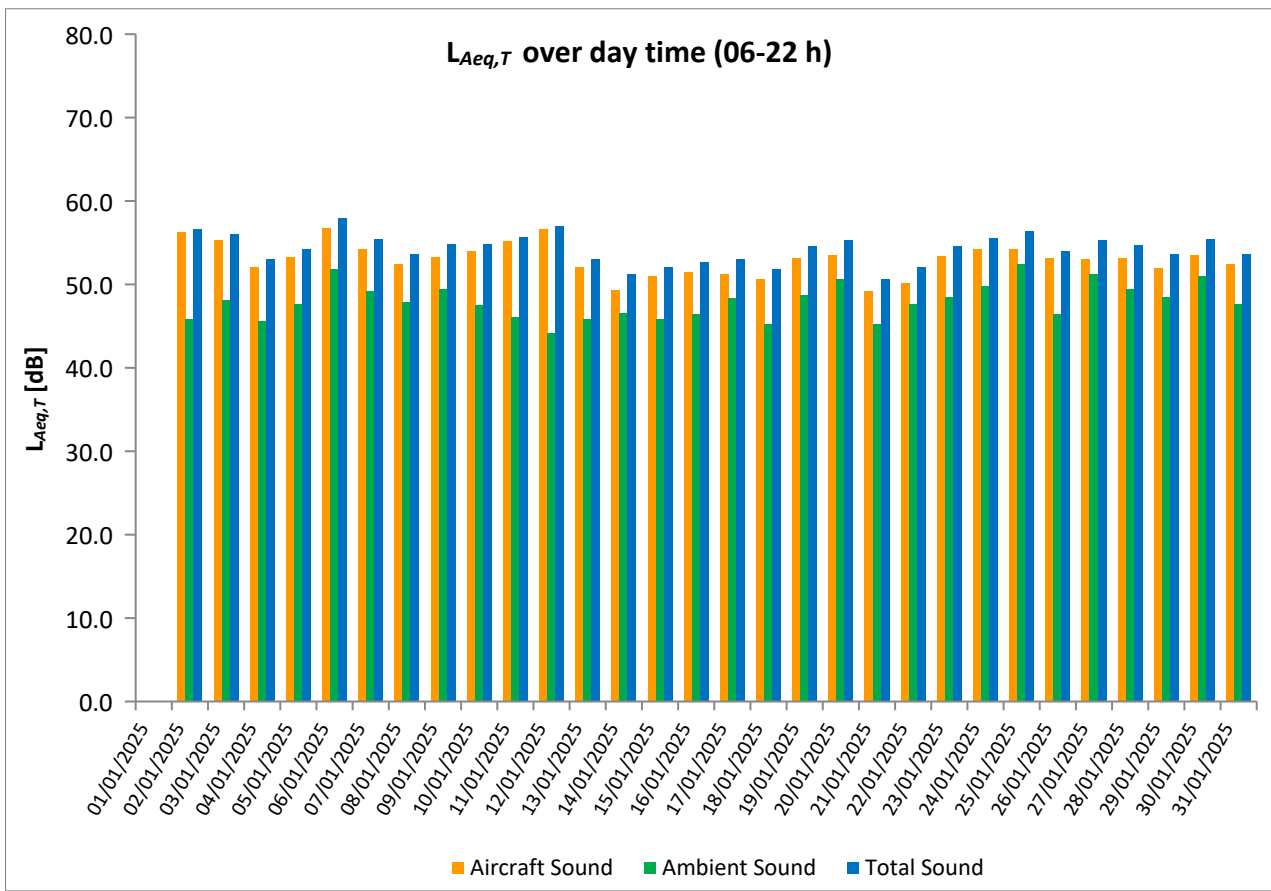
\* Availability < 50%

\*\* One or more events measured at wind speed above 5 m/s, not included into calculation

# Equivalent Continuous Sound Pressure Level

## MP06 Dobrovíz

January 2025



# Equivalent Continuous Sound Pressure Level

## MP07 Kněževés

### January 2025



	Total Sound [dB]		Aircraft Sound [dB]		Ambient Sound [dB]	
	L <sub>Aeq,T</sub> DAY	L <sub>Aeq,T</sub> NIGHT	L <sub>Aeq,T</sub> DAY	L <sub>Aeq,T</sub> NIGHT	L <sub>Aeq,T</sub> DAY	L <sub>Aeq,T</sub> NIGHT
01/01/2025	*	64.9	*	38.2	*	64.9
02/01/2025	54.1	*	52.9	*	48.0	*
03/01/2025	*	51.8	*	50.5**	*	45.7
04/01/2025	56.7	50.0	55.6	47.8	50.2	46.0
05/01/2025	59.3	55.4	58.1	53.6	53.2	50.5
06/01/2025	65.4	60.4	63.4	56.4	61.0	58.2
07/01/2025	*	51.6	*	50.5	*	45.1
08/01/2025	56.5	*	54.7	*	51.8	*
09/01/2025	*	50.3	*	47.3	*	47.2
10/01/2025	*	*	*	*	*	*
11/01/2025	53.5	45.4	51.0	42.5	49.9	42.3
12/01/2025	52.0	46.4	50.5	42.2	46.4	44.4
13/01/2025	53.2	47.6	51.8	44.5	47.8	44.8
14/01/2025	55.1	48.0	53.8	45.9	49.3	43.9
15/01/2025	49.2	46.2	45.9	42.3	46.5	43.9
16/01/2025	55.0	48.8	52.9	45.6	50.8	46.0
17/01/2025	57.9	48.9	55.7	46.9	54.0	44.5
18/01/2025	53.6	46.4	52.1	43.4	48.2	43.3
19/01/2025	54.5	55.3	51.1	48.2	51.9	54.3
20/01/2025	58.1	54.0	56.7	50.9	52.4	51.2
21/01/2025	53.8	46.7	52.8	44.9	46.8	42.0
22/01/2025	56.6	50.4	55.3	48.5	50.9	45.9
23/01/2025	56.8	50.4	55.5	48.5	51.2	45.8
24/01/2025	58.3	52.2	56.6	50.7	53.4	46.9
25/01/2025	58.7	55.7	56.8	54.4	54.2	49.7
26/01/2025	56.0	52.6	54.6	50.3	50.5	48.8
27/01/2025	59.0	53.8	57.7	51.8	53.1	49.5
28/01/2025	55.6	49.5	53.1	46.2	52.1	46.7
29/01/2025	*	51.4	*	49.7	*	46.7
30/01/2025	59.2	51.0	57.4	48.5	54.4	47.5
31/01/2025	50.1	52.2	47.8	50.7	46.1	46.8
Sum	57.4	54.0	55.7	49.8	52.5	51.9

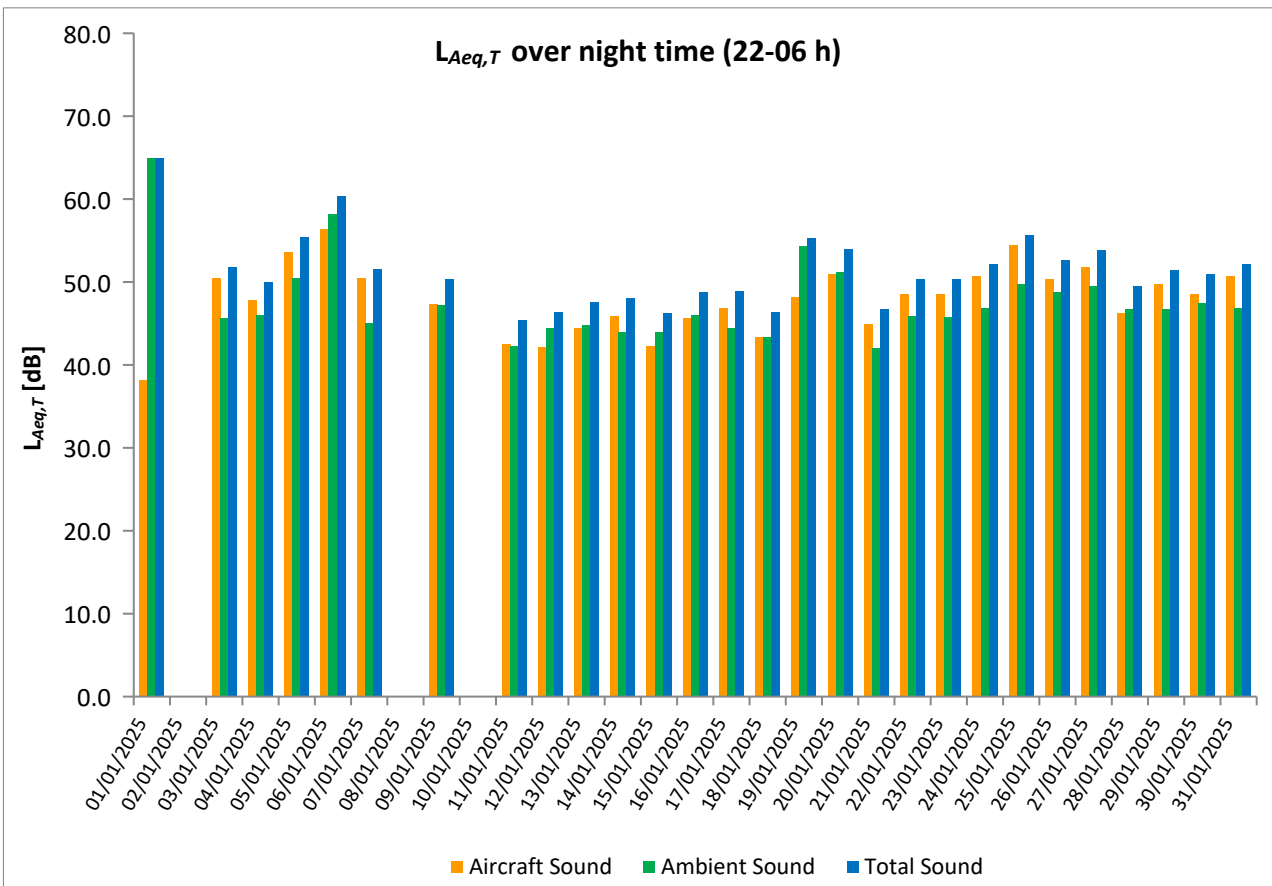
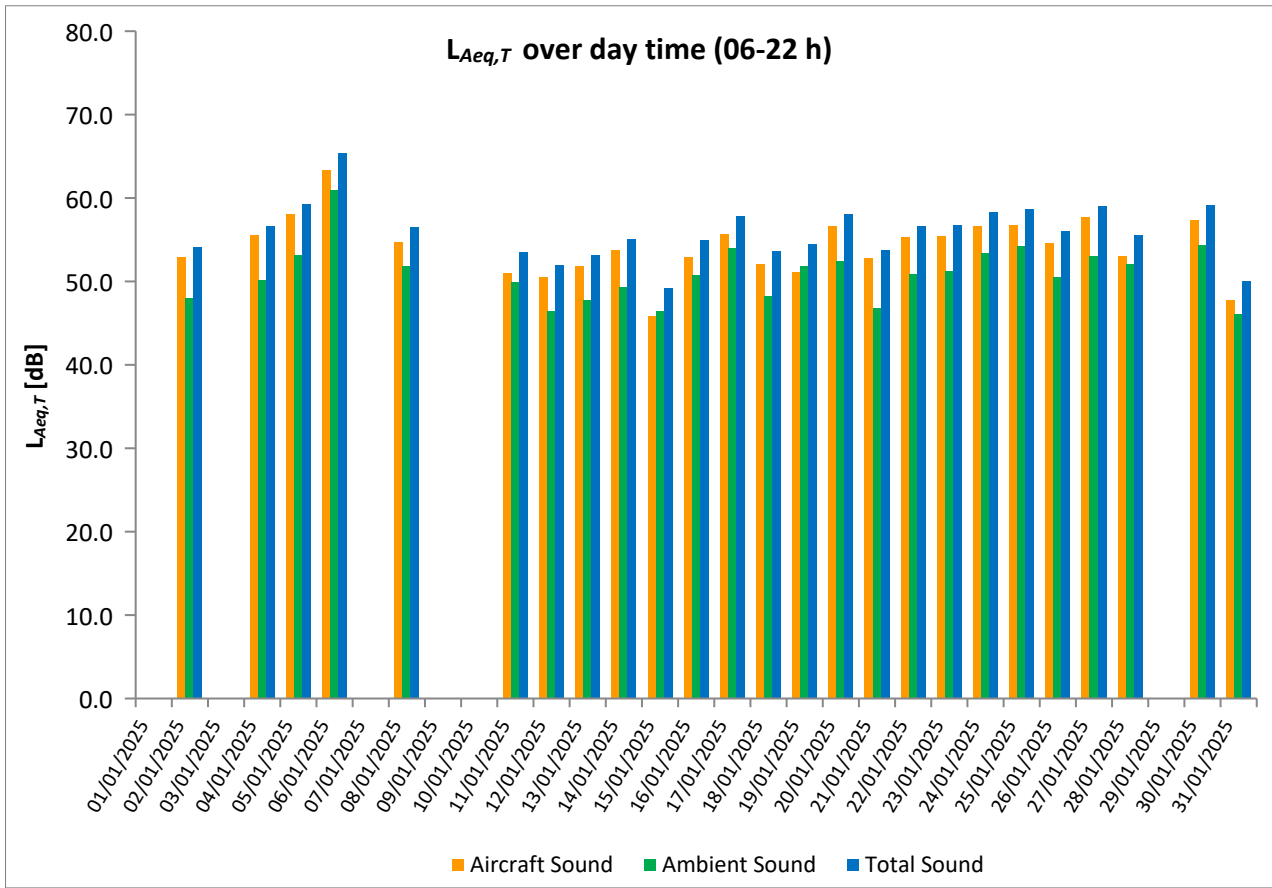
\* Availability < 50%

\*\* One or more events measured at wind speed above 5 m/s, not included into calculation

# Equivalent Continuous Sound Pressure Level

## MP07 Kněžves

January 2025



# Equivalent Continuous Sound Pressure Level

## MP08 Horoměřice střed

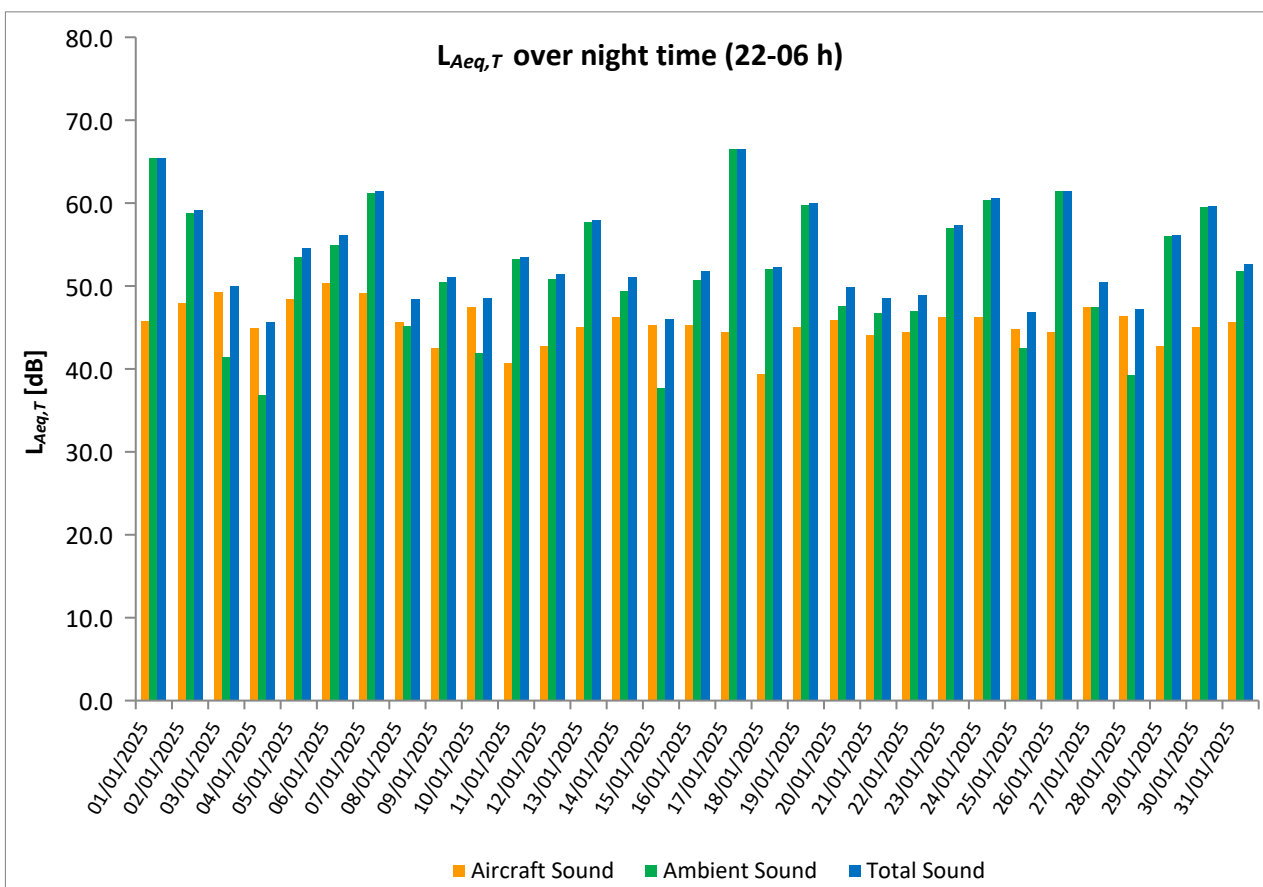
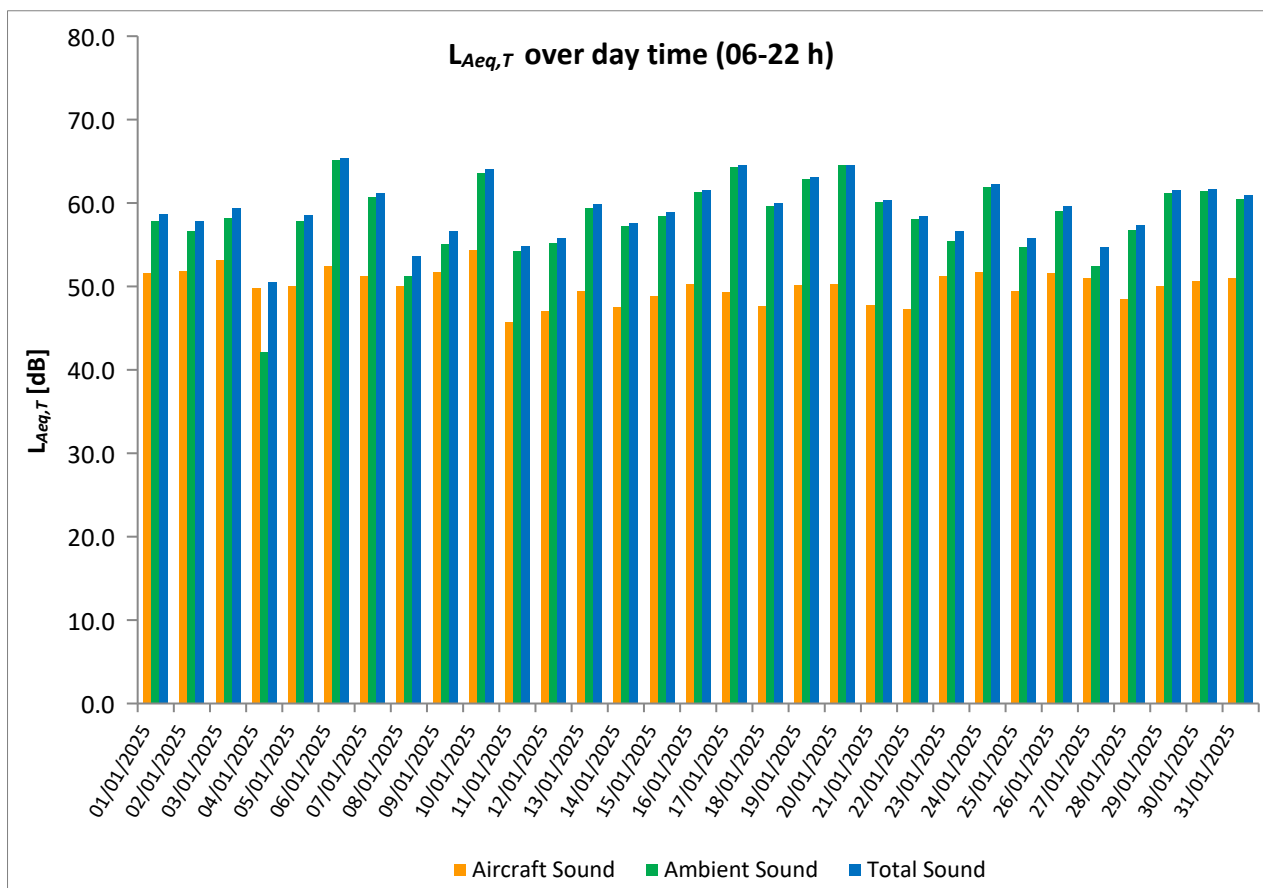
### January 2025

	Total Sound [dB]		Aircraft Sound [dB]		Ambient Sound [dB]	
	L <sub>Aeq,T</sub> DAY	L <sub>Aeq,T</sub> NIGHT	L <sub>Aeq,T</sub> DAY	L <sub>Aeq,T</sub> NIGHT	L <sub>Aeq,T</sub> DAY	L <sub>Aeq,T</sub> NIGHT
01/01/2025	58.7	65.4	51.6	45.8	57.8	65.4
02/01/2025	57.9	59.2	51.9	47.9	56.7	58.8
03/01/2025	59.4	50.0	53.2	49.3	58.2	41.4
04/01/2025	50.5	45.6	49.8	44.9	42.1	36.9
05/01/2025	58.6	54.6	50.1	48.4	57.9	53.5
06/01/2025	65.4	56.2	52.5	50.4	65.2	54.9
07/01/2025	61.2	61.4	51.2	49.1	60.7	61.2
08/01/2025	53.7	48.4	50.0	45.6	51.3	45.2
09/01/2025	56.7	51.1	51.7	42.5	55.1	50.5
10/01/2025	64.1	48.5	54.4	47.4	63.6	41.9
11/01/2025	54.8	53.5	45.7	40.7	54.3	53.3
12/01/2025	55.8	51.4	47.1	42.7	55.2	50.8
13/01/2025	59.9	57.9	49.5	45.0	59.4	57.7
14/01/2025	57.6	51.1	47.5	46.2	57.2	49.4
15/01/2025	58.9	46.0	48.8	45.3	58.5	37.7
16/01/2025	61.6	51.8	50.3	45.3	61.3	50.7
17/01/2025	64.5	66.5	49.3	44.5	64.3	66.5
18/01/2025	60.0	52.3	47.7	39.4	59.7	52.1
19/01/2025	63.1	60.0	50.2	45.0	62.9	59.8
20/01/2025	64.6	49.9	50.3	45.9	64.5	47.6
21/01/2025	60.4	48.6	47.8	44.1	60.1	46.7
22/01/2025	58.5	48.9	47.3	44.4	58.1	47.0
23/01/2025	56.7	57.3	51.2	46.2	55.4	57.0
24/01/2025	62.3	60.6	51.7	46.3	61.9	60.4
25/01/2025	55.8	46.8	49.5	44.8	54.7	42.5
26/01/2025	59.7	61.5	51.6	44.4	59.0	61.5
27/01/2025	54.7	50.5	51.0	47.5	52.4	47.4
28/01/2025	57.4	47.2	48.5	46.4	56.8	39.3
29/01/2025	61.6	56.2	50.0	42.7	61.2	56.0
30/01/2025	61.7	59.6	50.6	45.1	61.4	59.5
31/01/2025	60.9	52.7	51.0	45.6	60.5	51.8
Sum	60.5	57.8	50.5	46.0	60.0	57.5

\* Availability < 50%

\*\* One or more events measured at wind speed above 5 m/s, not included into calculation

Equivalent Continuous Sound Pressure Level  
**MP08 Horoměřice střed**  
**January 2025**





# Equivalent Continuous Sound Pressure Level

## MP09 Praha - Přední Kopanina

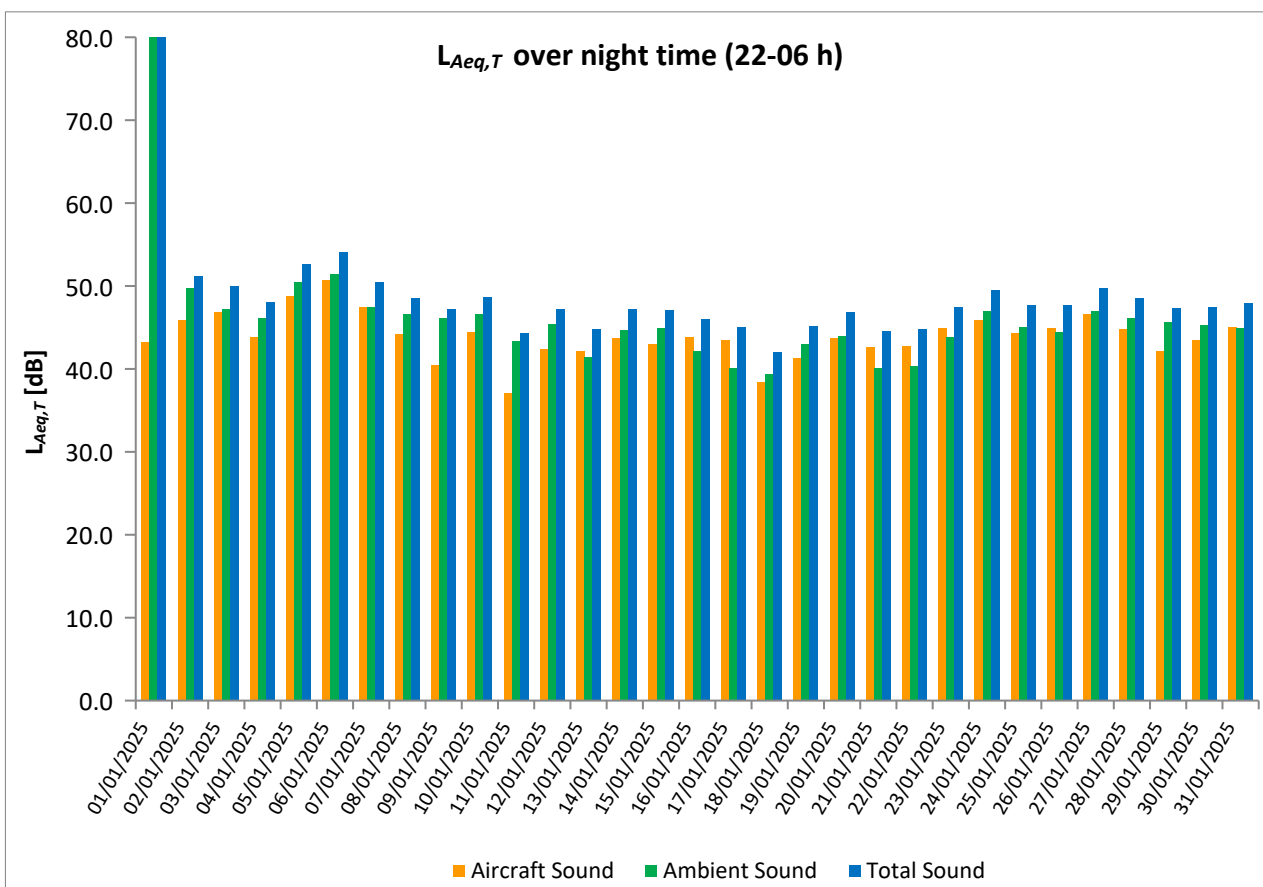
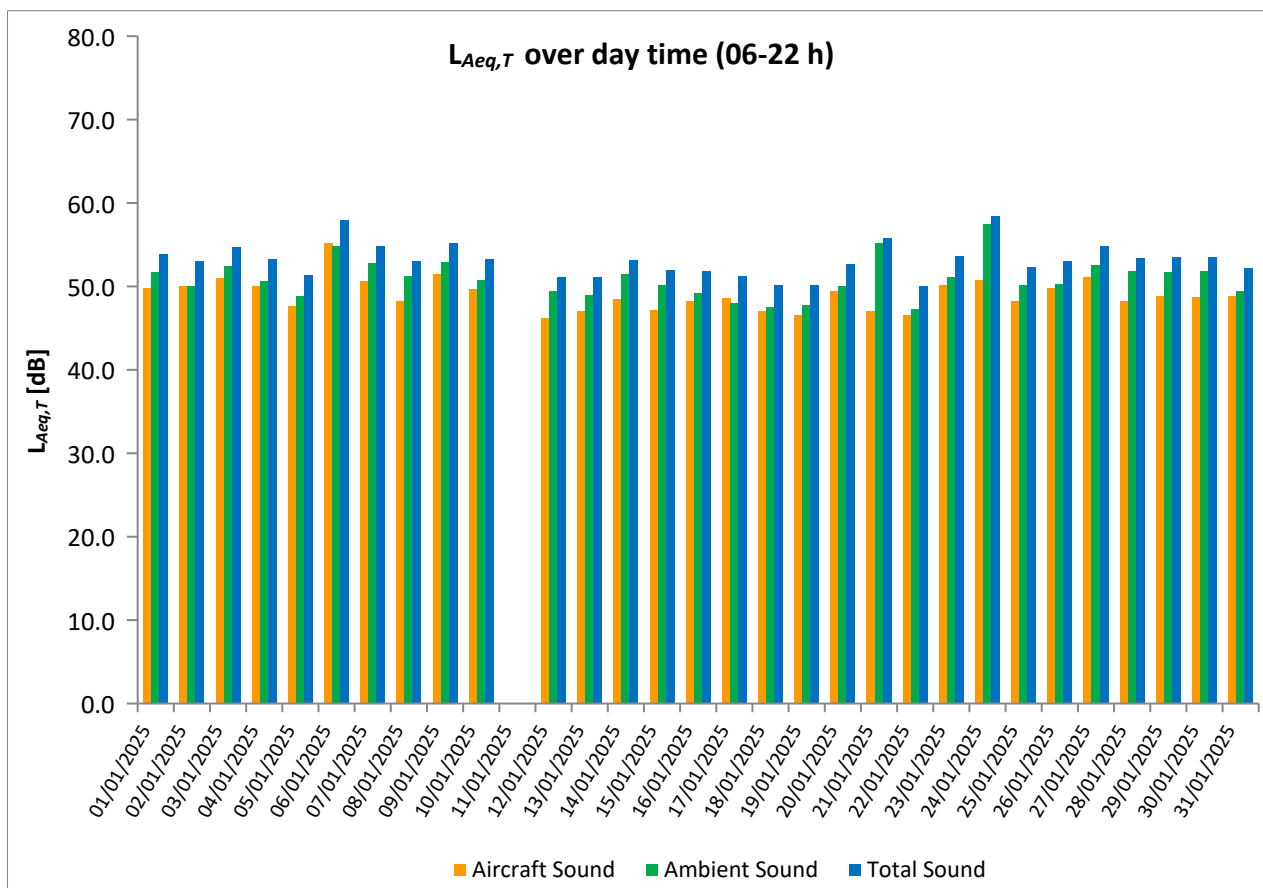
### January 2025

	Total Sound [dB]		Aircraft Sound [dB]		Ambient Sound [dB]	
	L <sub>Aeq,T</sub> DAY	L <sub>Aeq,T</sub> NIGHT	L <sub>Aeq,T</sub> DAY	L <sub>Aeq,T</sub> NIGHT	L <sub>Aeq,T</sub> DAY	L <sub>Aeq,T</sub> NIGHT
01/01/2025	53.9	80.2	49.8	43.2	51.7	80.2
02/01/2025	53.1	51.2	50.0	45.9	50.1	49.7
03/01/2025	54.7	50.0	51.0	46.8	52.4	47.2
04/01/2025	53.3	48.1	50.0	43.8	50.6	46.1
05/01/2025	51.4	52.7	47.7	48.8	48.9	50.5
06/01/2025	58.0	54.1	55.2	50.7	54.8	51.4
07/01/2025	54.9	50.5	50.7	47.5	52.8	47.5
08/01/2025	53.0	48.6	48.2	44.2	51.2	46.6
09/01/2025	55.2	47.2	51.5	40.5	52.9	46.1
10/01/2025	53.3	48.7	49.7	44.5	50.8	46.6
11/01/2025	*	44.3	*	37.1	*	43.4
12/01/2025	51.1	47.2	46.2	42.4	49.5	45.4
13/01/2025	51.1	44.8	47.0	42.2	49.0	41.4
14/01/2025	53.2	47.2	48.5	43.7	51.5	44.7
15/01/2025	52.0	47.1	47.2	43.0	50.2	44.9
16/01/2025	51.8	46.0	48.3	43.8	49.2	42.1
17/01/2025	51.3	45.1	48.6	43.5	48.0	40.1
18/01/2025	50.2	42.0	47.0	38.4	47.5	39.4
19/01/2025	50.2	45.2	46.6	41.3	47.8	43.0
20/01/2025	52.7	46.9	49.4	43.7	50.0	44.0
21/01/2025	55.8	44.6	47.1	42.6	55.2	40.1
22/01/2025	50.0	44.8	46.6	42.8	47.3	40.4
23/01/2025	53.7	47.4	50.2	44.9	51.1	43.8
24/01/2025	58.4	49.5	50.8	45.9	57.5	47.0
25/01/2025	52.3	47.7	48.2	44.3	50.2	45.1
26/01/2025	53.0	47.7	49.8	44.9	50.3	44.4
27/01/2025	54.9	49.8	51.1	46.6	52.6	47.0
28/01/2025	53.4	48.5	48.2	44.8	51.8	46.1
29/01/2025	53.5	47.3	48.8	42.1	51.7	45.7
30/01/2025	53.5	47.5	48.7	43.5	51.8	45.3
31/01/2025	52.2	47.9	48.9	45.0	49.4	44.9
Sum	53.7	65.6	49.5	44.8	51.6	65.5

\* Availability < 50%

\*\* One or more events measured at wind speed above 5 m/s, not included into calculation

Equivalent Continuous Sound Pressure Level  
 MP09 Praha - Přední Kopanina  
 January 2025



# Equivalent Continuous Sound Pressure Level

## MP10 Horoměřice

### January 2025



	Total Sound [dB]		Aircraft Sound [dB]		Ambient Sound [dB]	
	L <sub>Aeq,T</sub> DAY	L <sub>Aeq,T</sub> NIGHT	L <sub>Aeq,T</sub> DAY	L <sub>Aeq,T</sub> NIGHT	L <sub>Aeq,T</sub> DAY	L <sub>Aeq,T</sub> NIGHT
01/01/2025	51.1	65.2	48.4	42.9	47.8	65.2
02/01/2025	50.1	46.9	48.6	44.5	44.5	43.3
03/01/2025	51.5	47.1	50.1	46.2	45.8	39.6
04/01/2025	50.0	43.1	46.3	41.5	47.5	38.0
05/01/2025	49.6	45.6	46.6	45.1	46.5	36.4
06/01/2025	51.9	47.8	49.6	47.1	48.2	39.6
07/01/2025	50.5	46.7	48.3	45.9	46.6	38.9
08/01/2025	49.7	43.6	46.7	42.4	46.6	37.5
09/01/2025	50.7	42.4	48.6	39.7	46.7	39.1
10/01/2025	50.6	45.8	48.9	44.3	45.7	40.4
11/01/2025	48.2	40.6	42.7	37.3	46.8	37.9
12/01/2025	48.9	42.6	44.0	39.2	47.2	39.9
13/01/2025	49.1	43.2	46.1	42.1	46.1	36.3
14/01/2025	48.6	44.0	44.4	43.1	46.5	36.7
15/01/2025	48.8	43.2	45.4	42.3	46.2	35.9
16/01/2025	50.0	42.5	47.1	41.8	47.0	34.3
17/01/2025	50.1	41.6	45.5	40.7	48.3	34.0
18/01/2025	48.0	40.2	43.9	34.8	45.8	38.7
19/01/2025	49.7	43.1	46.3	41.7	47.1	37.6
20/01/2025	50.9	43.4	47.2	42.2	48.6	37.1
21/01/2025	48.4	40.9	44.3	40.0	46.3	33.6
22/01/2025	48.4	41.7	43.5	40.6	46.7	35.4
23/01/2025	51.4	43.7	48.2	42.8	48.6	36.6
24/01/2025	51.3	45.2	48.5	43.7	48.1	39.9
25/01/2025	50.1	42.7	45.7	41.3	48.2	37.0
26/01/2025	50.4	42.1	48.1	41.2	46.6	35.2
27/01/2025	50.5	45.4	47.7	44.4	47.2	38.5
28/01/2025	48.6	44.3	45.4	43.3	45.7	37.8
29/01/2025	50.9	41.0	47.1	39.4	48.6	35.8
30/01/2025	51.2	43.3	47.3	41.8	48.8	38.1
31/01/2025	51.1	43.7	47.8	42.7	48.3	37.0
Sum	50.1	51.2	47.1	42.8	47.2	50.5

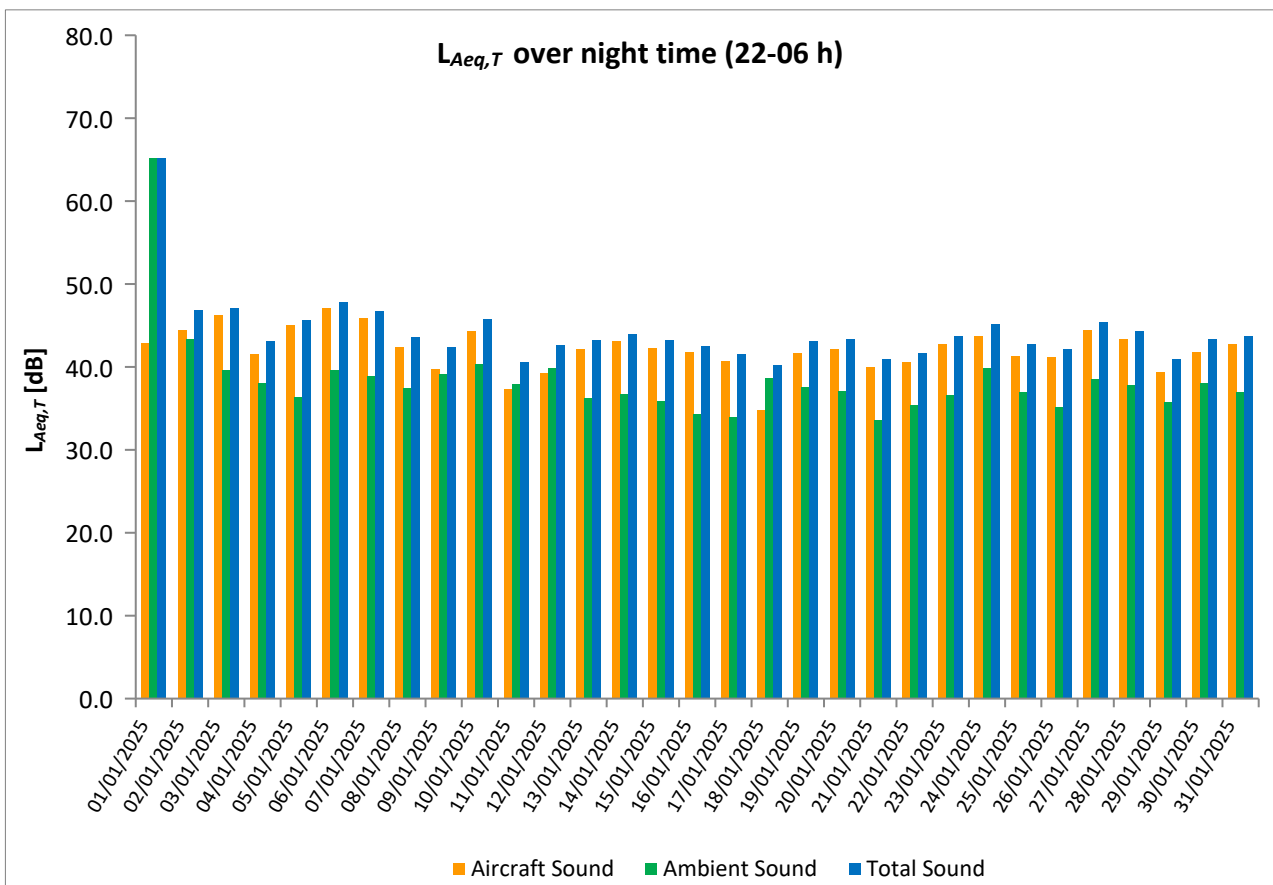
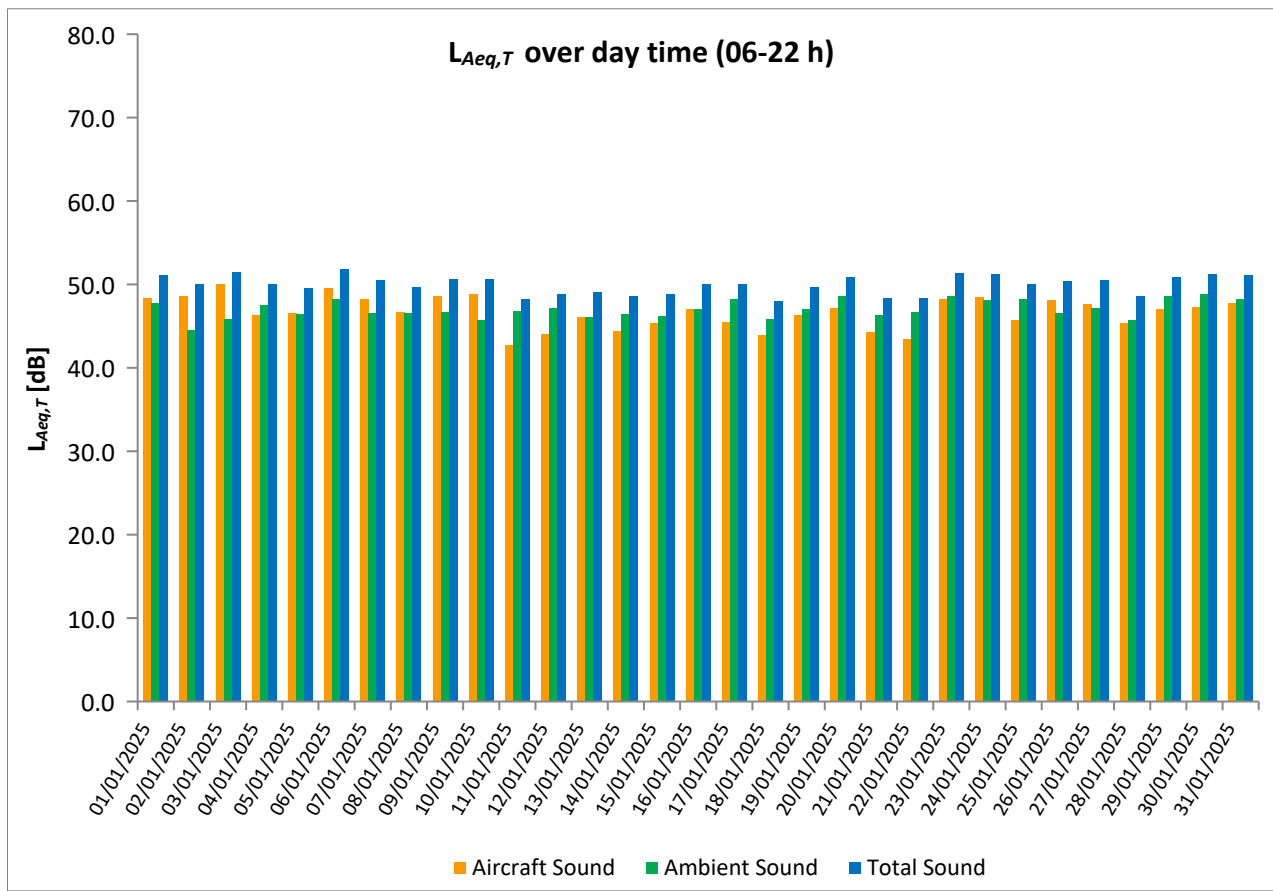
\* Availability < 50%

\*\* One or more events measured at wind speed above 5 m/s, not included into calculation

# Equivalent Continuous Sound Pressure Level

## MP10 Horoměřice

January 2025



## Equivalent Continuous Sound Pressure Level

### MP11 Rostoky

### January 2025

	Total Sound [dB]		Aircraft Sound [dB]		Ambient Sound [dB]	
	L <sub>Aeq,T</sub> DAY	L <sub>Aeq,T</sub> NIGHT	L <sub>Aeq,T</sub> DAY	L <sub>Aeq,T</sub> NIGHT	L <sub>Aeq,T</sub> DAY	L <sub>Aeq,T</sub> NIGHT
01/01/2025	52.6	61.7	51.5	46.0	46.3	61.6
02/01/2025	53.2	48.1	51.9	46.6	47.1	42.5
03/01/2025	54.5	49.6	52.8	48.8	49.7	41.8
04/01/2025	51.0	45.6	49.9	44.7	44.5	38.5
05/01/2025	50.6	48.6	49.6	48.1	43.7	38.9
06/01/2025	54.4	50.7	53.2	50.0	48.1	42.6
07/01/2025	52.6	49.2	51.2	48.5	46.9	41.0
08/01/2025	51.6	47.3	50.1	46.6	46.2	39.3
09/01/2025	54.2	46.2	52.0	43.9	50.3	42.4
10/01/2025	53.3	48.8	51.1	47.0	49.3	44.2
11/01/2025	50.1	43.5	45.9	40.5	48.1	40.5
12/01/2025	49.2	45.3	47.4	43.3	44.5	40.9
13/01/2025	52.7	46.8	50.8	46.0	48.2	38.7
14/01/2025	50.5	47.2	46.7	46.4	48.1	39.8
15/01/2025	50.8	46.4	49.1	45.5	46.0	38.8
16/01/2025	50.5	44.4	49.3	43.4	44.6	37.3
17/01/2025	53.5	43.7	46.9	42.3	52.5	38.3
18/01/2025	48.6	40.9	46.3	39.1	44.8	36.0
19/01/2025	51.5	45.2	50.5	44.2	44.9	38.2
20/01/2025	64.6	46.4	51.3	45.3	64.4	39.5
21/01/2025	50.2	43.7	47.5	42.6	46.8	36.9
22/01/2025	50.6	43.7	47.1	42.1	48.0	38.7
23/01/2025	53.4	46.6	51.8	45.8	48.5	39.0
24/01/2025	53.2	47.3	52.2	46.4	46.3	40.4
25/01/2025	51.3	46.5	49.5	45.1	46.5	40.9
26/01/2025	53.0	45.7	51.8	44.9	47.0	38.2
27/01/2025	53.0	48.6	51.4	47.9	48.0	39.9
28/01/2025	50.6	47.4	49.2	46.2	45.3	41.2
29/01/2025	52.3	44.5	50.4	42.8	47.7	39.5
30/01/2025	52.6	46.7	51.3	45.2	46.7	41.3
31/01/2025	52.7	47.1	51.2	45.8	47.5	41.3
Sum	54.0	49.7	50.4	45.8	51.6	47.4

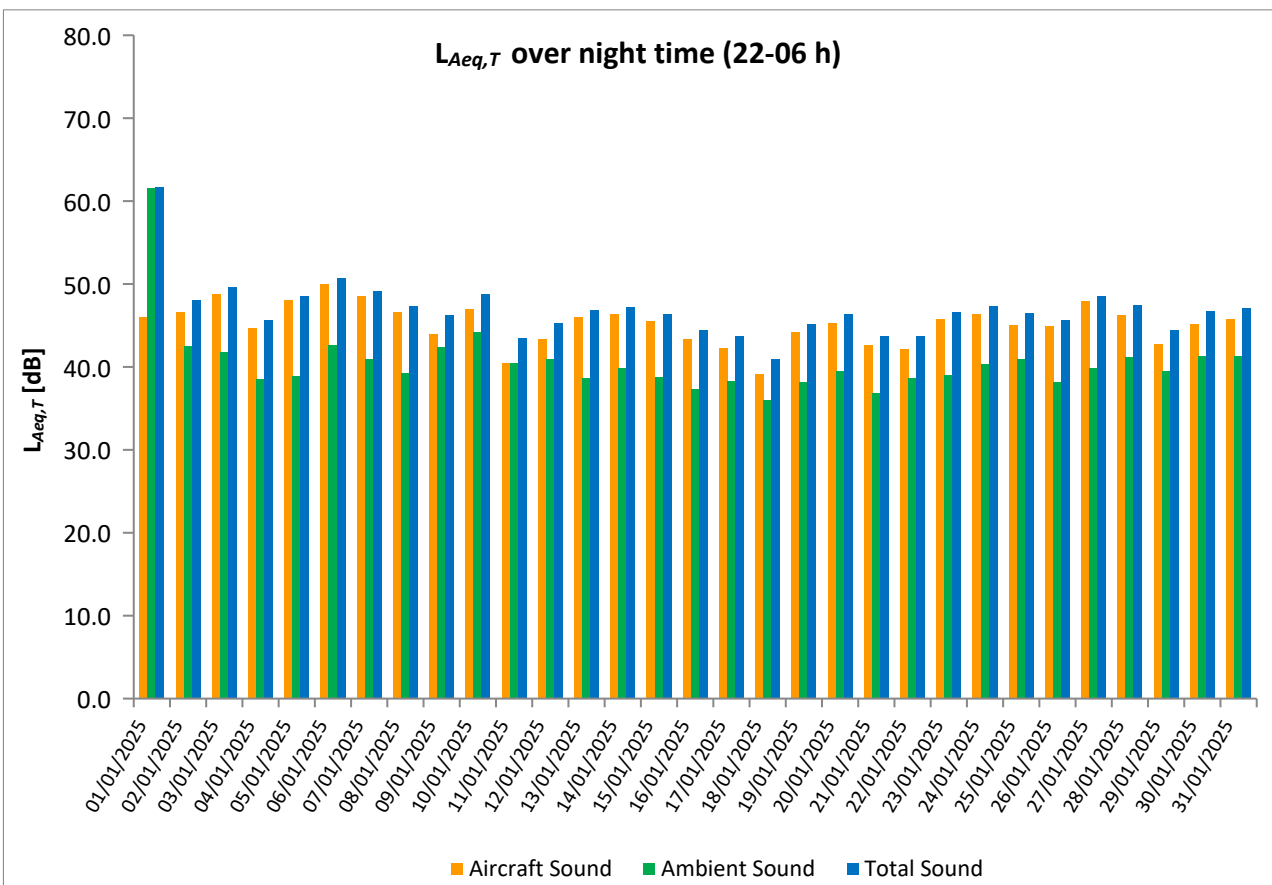
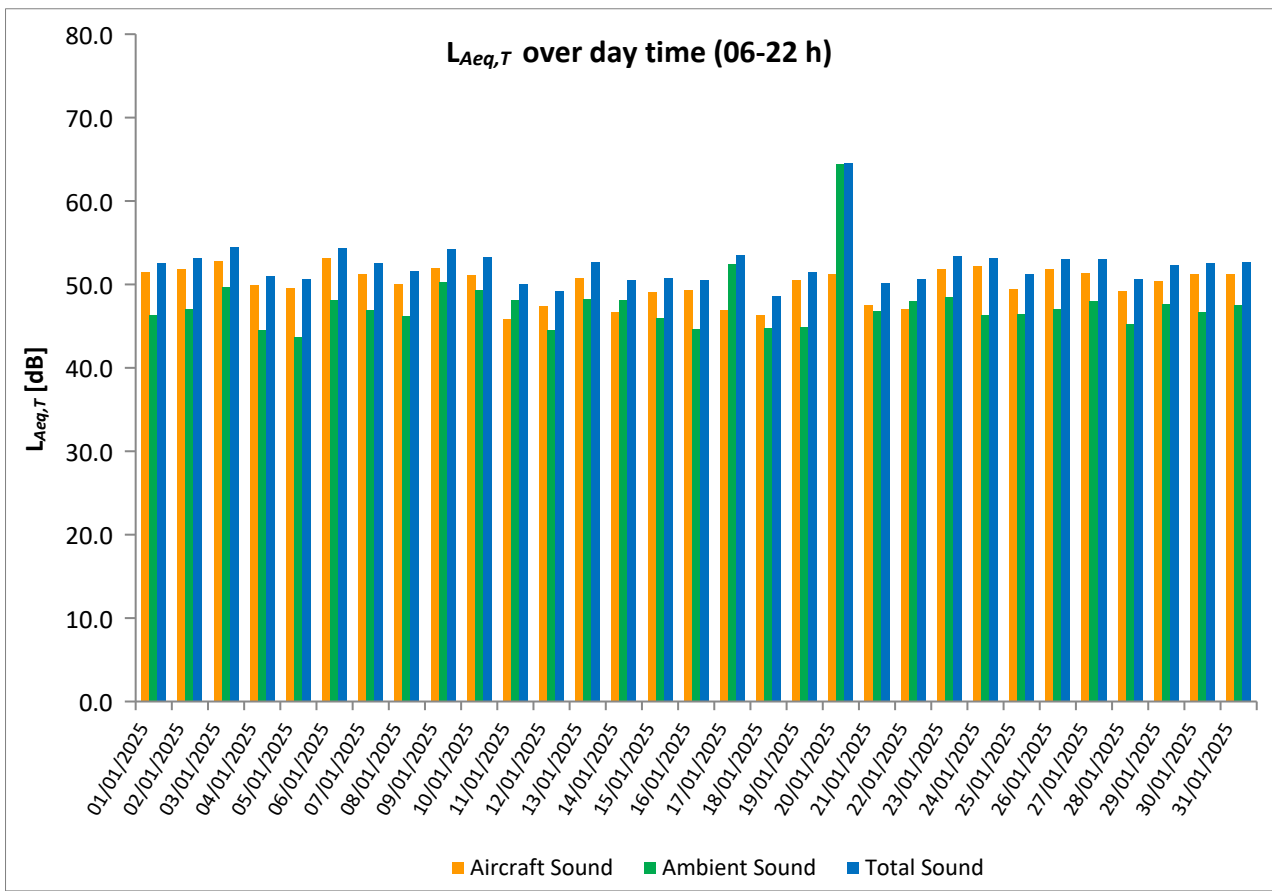
\* Availability < 50%

\*\* One or more events measured at wind speed above 5 m/s, not included into calculation

# Equivalent Continuous Sound Pressure Level

## MP11 Roztoky

January 2025



# Equivalent Continuous Sound Pressure Level

## MP12 Praha 17 - Řepy

January 2025

	Total Sound [dB]		Aircraft Sound [dB]		Ambient Sound [dB]	
	L <sub>Aeq,T</sub> DAY	L <sub>Aeq,T</sub> NIGHT	L <sub>Aeq,T</sub> DAY	L <sub>Aeq,T</sub> NIGHT	L <sub>Aeq,T</sub> DAY	L <sub>Aeq,T</sub> NIGHT
01/01/2025	49.4	67.8			49.4	67.8
02/01/2025	53.8	46.2	53.2		45.0	46.2
03/01/2025	49.2	40.6			49.2	40.6
04/01/2025	56.0	39.2	23.1		56.0	39.2
05/01/2025	42.9	40.1			42.9	40.1
06/01/2025	50.0	44.1			50.0	44.1
07/01/2025	48.2	43.1	34.8		48.0	43.1
08/01/2025	48.5	41.6			48.5	41.6
09/01/2025	53.1	56.6	50.6	56.3	49.4	44.9
10/01/2025	47.2	43.8	24.4		47.2	43.8
11/01/2025	58.6	54.5	58.2	53.7	47.2	47.1
12/01/2025	58.6	49.7	58.4	49.1	44.4	40.3
13/01/2025	43.1	34.8	36.7	21.2	42.0	34.6
14/01/2025	48.1	39.6	40.1		47.4	39.6
15/01/2025	45.2	41.1			45.2	41.1
16/01/2025	43.7	31.3	34.5		43.1	31.3
17/01/2025	44.7	31.1	29.3		44.6	31.1
18/01/2025	41.5	31.1	28.8		41.3	31.1
19/01/2025	44.6	36.3			44.6	36.3
20/01/2025	46.4	40.5	34.1		46.2	40.5
21/01/2025	41.1	31.3	18.1		41.0	31.3
22/01/2025	41.3	32.9	34.4		40.3	32.9
23/01/2025	48.0	42.2			48.0	42.2
24/01/2025	47.8	42.2	41.5	29.4	46.6	42.0
25/01/2025	46.1	39.7	38.3		45.3	39.7
26/01/2025	48.3	36.3	43.2		46.7	36.3
27/01/2025	49.3	40.5	28.8		49.3	40.5
28/01/2025	47.8	40.3	37.2		47.4	40.3
29/01/2025	48.6	41.2	31.1		48.6	41.2
30/01/2025	48.2	39.4	45.2		45.1	39.4
31/01/2025	52.0	41.2	29.8		52.0	41.2
Sum	50.8	53.1	47.6	43.8	47.9	52.5

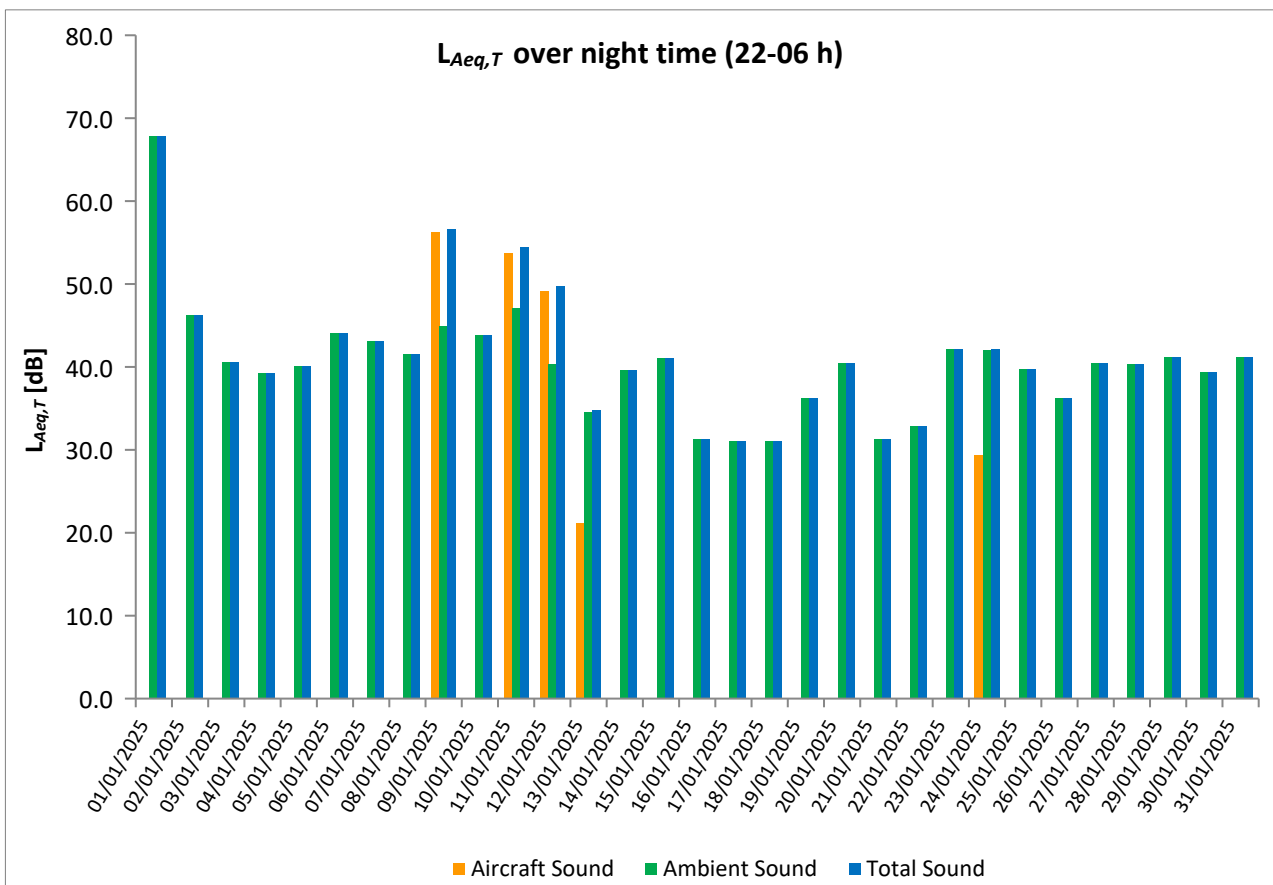
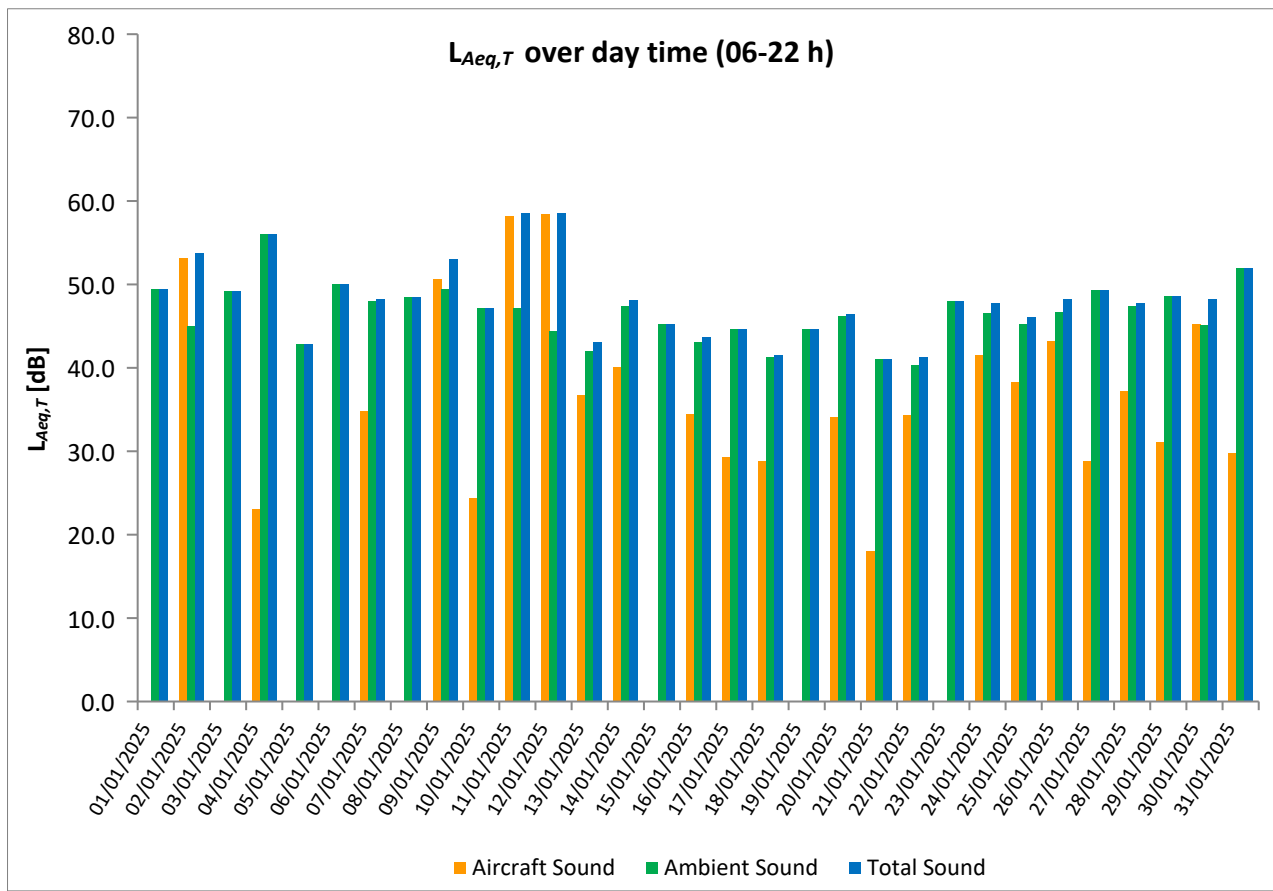
\* Availability < 50%

\*\* One or more events measured at wind speed above 5 m/s, not included into calculation

# Equivalent Continuous Sound Pressure Level

## MP12 Praha 17 - Řepy

January 2025





## Equivalent Continuous Sound Pressure Level

### MP13 Suchdol

### January 2025

	Total Sound [dB]		Aircraft Sound [dB]		Ambient Sound [dB]	
	L <sub>Aeq,T</sub> DAY	L <sub>Aeq,T</sub> NIGHT	L <sub>Aeq,T</sub> DAY	L <sub>Aeq,T</sub> NIGHT	L <sub>Aeq,T</sub> DAY	L <sub>Aeq,T</sub> NIGHT
01/01/2025	67.8	62.2	55.2	49.1	67.5	62.0
02/01/2025	56.3	52.7	55.9	52.0	45.6	43.9
03/01/2025	57.0	52.9	56.5	52.5	47.5	42.3
04/01/2025	53.7	48.8	53.1	48.4	44.8	38.5
05/01/2025	53.2	51.4	52.8	51.2	42.7	38.4
06/01/2025	56.8	53.7	56.5	53.4	45.3	41.5
07/01/2025	55.4	52.5	54.7	52.2	47.3	40.6
08/01/2025	54.4	50.4	53.9	49.9	45.0	40.6
09/01/2025	56.0	47.6	55.4	46.7	46.7	40.5
10/01/2025	55.8	51.7	55.2	50.9	46.4	43.9
11/01/2025	50.9	45.4	49.6	44.1	44.8	39.4
12/01/2025	51.9	48.0	51.4	47.5	42.2	38.7
13/01/2025	54.3	49.9	54.0	49.6	43.4	38.4
14/01/2025	51.9	50.1	51.2	49.7	43.5	39.0
15/01/2025	53.3	50.3	52.9	50.0	42.7	39.1
16/01/2025	54.1	48.5	53.8	48.3	42.9	36.0
17/01/2025	52.8	47.8	52.1	47.5	43.9	36.1
18/01/2025	51.6	44.7	51.3	44.0	40.2	36.6
19/01/2025	54.3	48.5	54.0	48.1	42.3	37.1
20/01/2025	54.7	49.7	54.2	49.3	44.6	38.8
21/01/2025	52.2	47.0	51.9	46.7	41.0	35.8
22/01/2025	51.8	48.1	51.1	47.7	43.4	37.8
23/01/2025	55.5	49.6	55.0	49.3	45.7	37.6
24/01/2025	55.9	50.6	55.4	50.2	46.5	39.7
25/01/2025	53.8	49.0	53.1	48.6	45.3	38.5
26/01/2025	55.8	48.8	55.3	48.5	46.0	37.4
27/01/2025	55.0	51.6	54.6	51.3	44.7	39.5
28/01/2025	53.2	50.2	52.7	49.4	43.1	42.2
29/01/2025	54.6	46.5	53.9	45.8	46.1	38.5
30/01/2025	55.2	49.0	54.6	48.6	46.0	38.1
31/01/2025	55.1	49.8	54.7	49.5	43.8	38.8
Sum	56.2	51.5	54.0	49.5	52.2	47.2

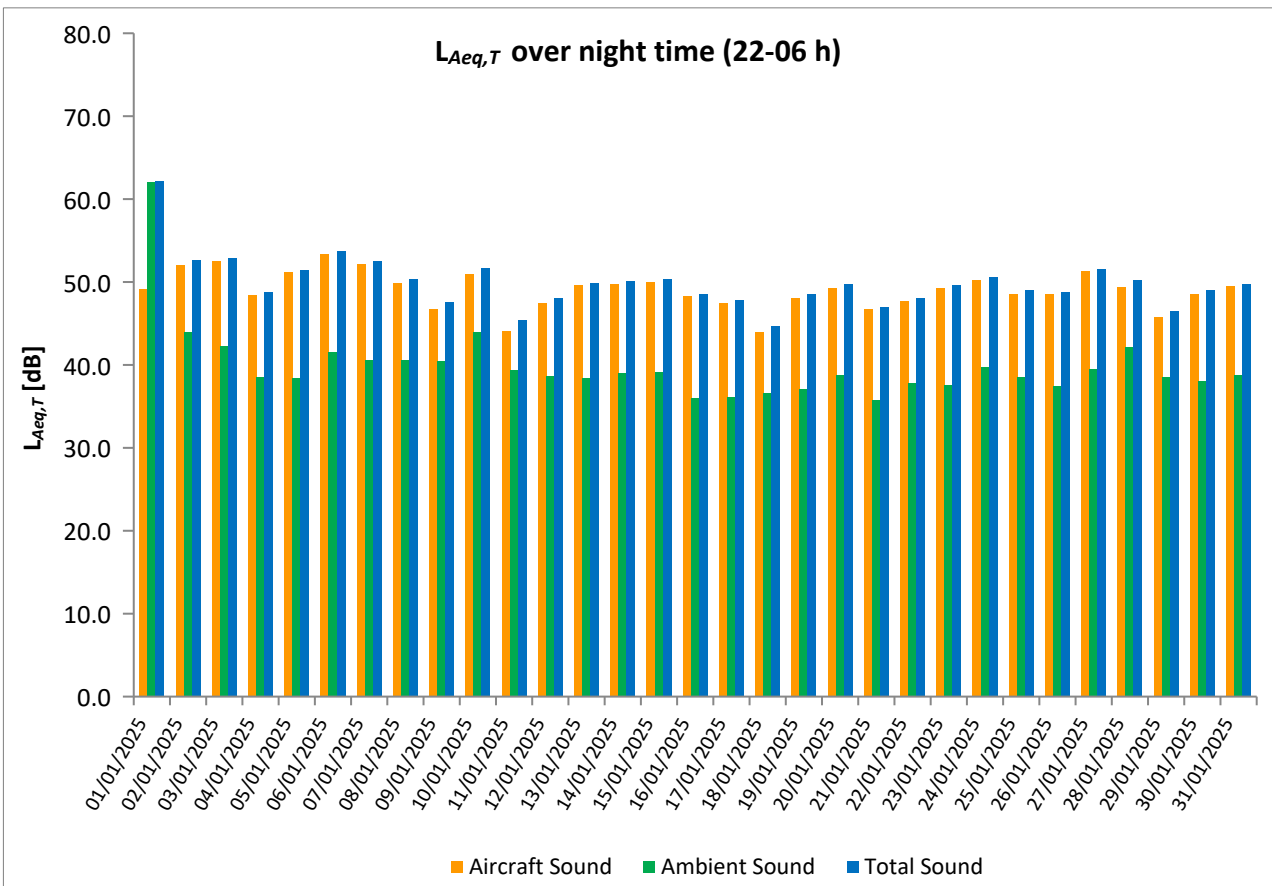
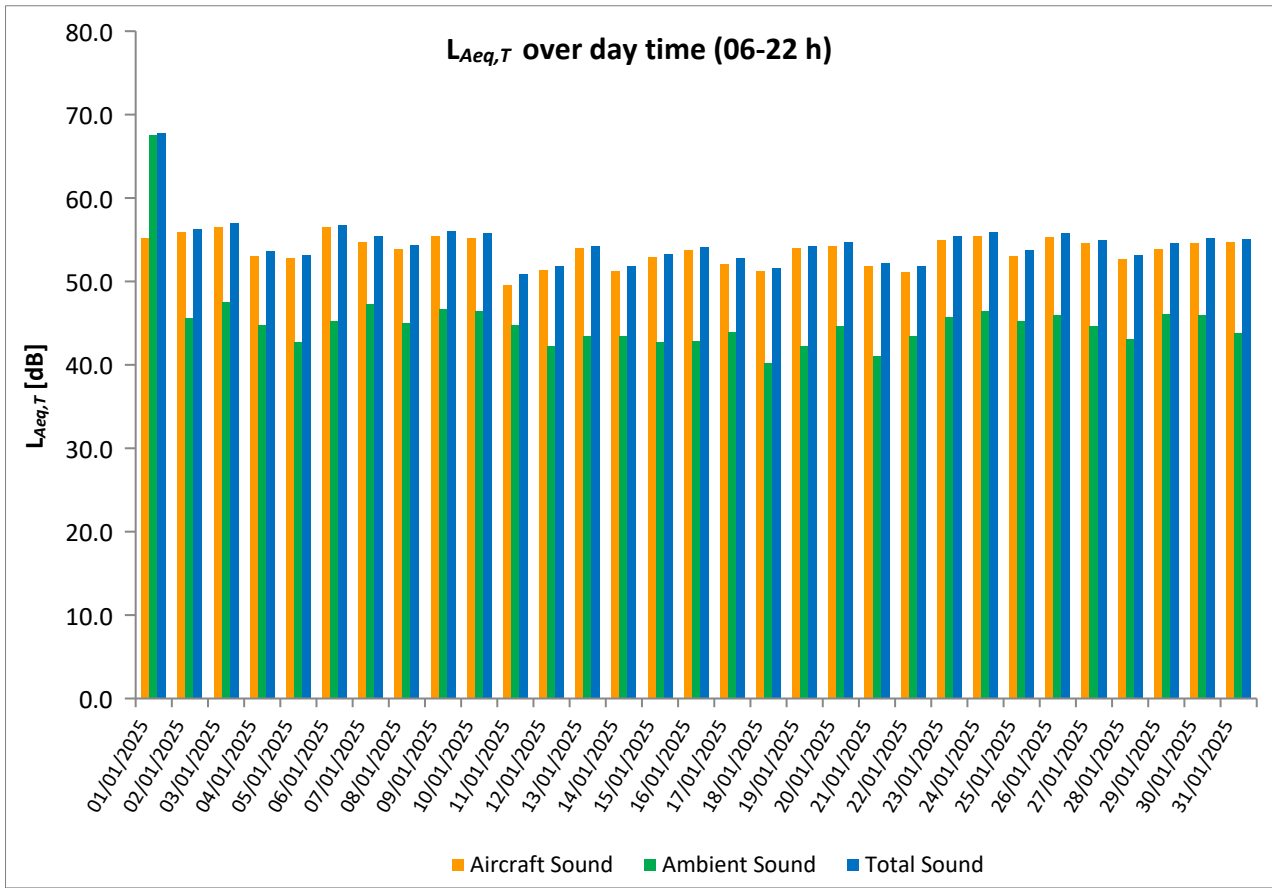
\* Availability < 50%

\*\* One or more events measured at wind speed above 5 m/s, not included into calculation

# Equivalent Continuous Sound Pressure Level

## MP13 Suchdol

January 2025



# Equivalent Continuous Sound Pressure Level

## MP14 Malé Kyšice

### January 2025



	Total Sound [dB]		Aircraft Sound [dB]		Ambient Sound [dB]	
	L <sub>Aeq,T</sub> DAY	L <sub>Aeq,T</sub> NIGHT	L <sub>Aeq,T</sub> DAY	L <sub>Aeq,T</sub> NIGHT	L <sub>Aeq,T</sub> DAY	L <sub>Aeq,T</sub> NIGHT
01/01/2025	48.0	67.3	42.9	36.9	46.3	67.3
02/01/2025	52.1	48.1	51.1	45.7	44.9	44.5
03/01/2025	50.9	45.9	49.9	45.4	43.8	36.5
04/01/2025	51.0	44.0	50.4	43.5	41.7	34.4
05/01/2025	49.7	45.6	49.2	45.3	40.2	33.6
06/01/2025	51.3	47.8	50.7	47.3	42.3	38.5
07/01/2025	50.3	45.9	49.4	45.0	42.8	38.6
08/01/2025	49.1	46.4	48.2	45.3	41.9	39.7
09/01/2025	50.4	44.9	49.3	41.8	44.1	41.9
10/01/2025	50.7	43.7	50.0	39.0	42.7	41.9
11/01/2025	47.1	42.5	44.6	41.4	43.6	36.2
12/01/2025	47.7	44.2	46.4	43.4	41.7	36.8
13/01/2025	50.5	43.5	49.5	43.1	43.2	33.3
14/01/2025	44.4	43.1	42.0	42.5	40.8	34.0
15/01/2025	50.1	45.8	49.5	44.8	41.5	39.3
16/01/2025	49.0	44.0	48.3	43.6	41.0	34.0
17/01/2025	49.2	41.4	48.6	41.0	40.4	31.7
18/01/2025	50.0	40.1	47.9	39.6	45.8	30.3
19/01/2025	51.0	47.2	50.6	47.0	39.9	33.7
20/01/2025	51.6	43.7	51.1	42.9	42.1	36.3
21/01/2025	48.3	41.1	47.5	40.2	40.8	33.4
22/01/2025	51.4	44.3	48.0	43.1	48.9	37.8
23/01/2025	49.8	45.2	48.9	44.0	42.6	39.2
24/01/2025	51.2	42.0	50.5	39.9	43.3	37.8
25/01/2025	49.5	44.0	48.7	42.9	42.1	37.6
26/01/2025	50.5	42.4	49.9	41.7	41.8	34.0
27/01/2025	50.5	44.8	49.4	44.0	43.8	36.8
28/01/2025	49.4	43.8	48.8	42.5	40.6	37.9
29/01/2025	49.7	44.1	48.5	43.6	43.5	33.7
30/01/2025	50.7	44.8	49.7	43.9	43.9	37.7
31/01/2025	51.4	45.0	50.8	44.4	42.4	36.2
Sum	50.1	53.0	49.1	43.6	43.2	52.5

\* Availability < 50%

\*\* One or more events measured at wind speed above 5 m/s, not included into calculation

# Equivalent Continuous Sound Pressure Level

## MP14 Malé Kyšice

January 2025

